

Accessibility Survey



City of Downey New Street - 6th Street to 2nd Street

6th Street to 2nd Street
Downey, CA 90242

Date of Inspection
7/19/2017

Prepared By
Disability Access Consultants
(800) 743-7067

New Street - 6th Street to 2nd Street

Sidewalks - Exterior : Sidewalks , Change in Level

East Side

Change in Level South of 3rd Street @ 33.942098286438, -118.132724761963

Sidewalks , Change in Level : Change in Level Non Beveled

Finding

There is a change in elevation greater than recommended value.

On-Site Finding 2.00 inches

Recommendation

Ensure that the change in elevation is within the recommended value.

Recommendation Up to 0.25 inches

Costing Info (Estimated)

Remove tripping hazards \$198



Code Reference ADA 206, 302

Notes : Surface is Rough And Uneven

Progress

| | | | |
|-------------------------|-------------|-----------------------|------------|
| Record Number | 471870 | Resolution | None |
| Progress | Not_Started | Priority | One |
| Actual Date | | Projected Date | 06/30/2018 |
| Actual Cost | \$0.00 | Contractor | |
| Comments | No Comments | New Value | 0 |
| Assignment | None | | |
| Designated Staff | | | |

New Street - 6th Street to 2nd Street

Sidewalks - Exterior : Sidewalks , Change in Level

West Side

Change in Level North of 4th Street @ 33.943698166225, -118.131551295519

Sidewalks , Change in Level : Change in Level Non Beveled

Finding

There is a change in elevation greater than recommended value.

On-Site Finding 1.50 inches

Recommendation

Ensure that the change in elevation is within the recommended value.

Recommendation Up to 0.25 inches

Costing Info (Estimated)

Remove tripping hazards \$198



Code Reference ADA 206, 302

Notes : Surface is Rough And Uneven

Progress

| | | | |
|-------------------------|-------------|-----------------------|------------|
| Record Number | 471809 | Resolution | None |
| Progress | Not_Started | Priority | One |
| Actual Date | | Projected Date | 06/30/2018 |
| Actual Cost | \$0.00 | Contractor | |
| Comments | No Comments | New Value | 0 |
| Assignment | None | | |
| Designated Staff | | | |

New Street - 6th Street to 2nd Street

Sidewalks - Exterior : Sidewalks , Change in Level

West Side

Change in Level North of 4th Street @ 33.943698166225, -118.131551295519

Sidewalks , Change in Level : Change in Level Non Beveled

Finding

There is a change in elevation greater than recommended value.

On-Site Finding 1.75 inches

Recommendation

Ensure that the change in elevation is within the recommended value.

Recommendation Up to 0.25 inches

Costing Info (Estimated)

Remove tripping hazards \$198



Code Reference ADA 206, 302

Notes : Surface is Rough And Uneven

Progress

| | | | |
|-------------------------|-------------|-----------------------|------------|
| Record Number | 471822 | Resolution | None |
| Progress | Not_Started | Priority | One |
| Actual Date | | Projected Date | 06/30/2018 |
| Actual Cost | \$0.00 | Contractor | |
| Comments | No Comments | New Value | 0 |
| Assignment | None | | |
| Designated Staff | | | |

New Street - 6th Street to 2nd Street

Sidewalks - Exterior : Sidewalks , Change in Level

West Side

Change in Level North of 4th Street @ 33.943827223367, -118.131438642740

Sidewalks , Change in Level : Change in Level Non Beveled

Finding

There is a change in elevation greater than recommended value.

On-Site Finding 2.00 inches

Recommendation

Ensure that the change in elevation is within the recommended value.

Recommendation Up to 0.25 inches

Costing Info (Estimated)

Remove tripping hazards \$198



Code Reference ADA 206, 302

Notes : Surface is Rough And Uneven

Progress

| | | | |
|-------------------------|-------------|-----------------------|------------|
| Record Number | 471819 | Resolution | None |
| Progress | Not_Started | Priority | One |
| Actual Date | | Projected Date | 06/30/2018 |
| Actual Cost | \$0.00 | Contractor | |
| Comments | No Comments | New Value | 0 |
| Assignment | None | | |
| Designated Staff | | | |

New Street - 6th Street to 2nd Street

Sidewalks - Exterior : Sidewalks , Change in Level

East Side

Change in Level South of 3rd Street @ 33.942098286438, -118.132724761963

Sidewalks , Change in Level : Change in Level Non Beveled

Finding

There is a change in elevation greater than recommended value.

On-Site Finding 1.00 inches

Recommendation

Ensure that the change in elevation is within the recommended value.

Recommendation Up to 0.25 inches

Costing Info (Estimated)

Remove tripping hazards \$198



Code Reference ADA 206, 302

Progress

| | | | |
|-------------------------|-------------|-----------------------|------------|
| Record Number | 471869 | Resolution | None |
| Progress | Not_Started | Priority | Two |
| Actual Date | | Projected Date | 06/30/2021 |
| Actual Cost | \$0.00 | Contractor | |
| Comments | No Comments | New Value | 0 |
| Assignment | None | | |
| Designated Staff | | | |

New Street - 6th Street to 2nd Street

Sidewalks - Exterior : Sidewalks , Change in Level

West Side

Change in Level North of 3rd Street @ 33.942636775064, -118.132459223270

Sidewalks , Change in Level : Change in Level Non Beveled

Finding

There is a change in elevation greater than recommended value.

On-Site Finding 0.50 inches

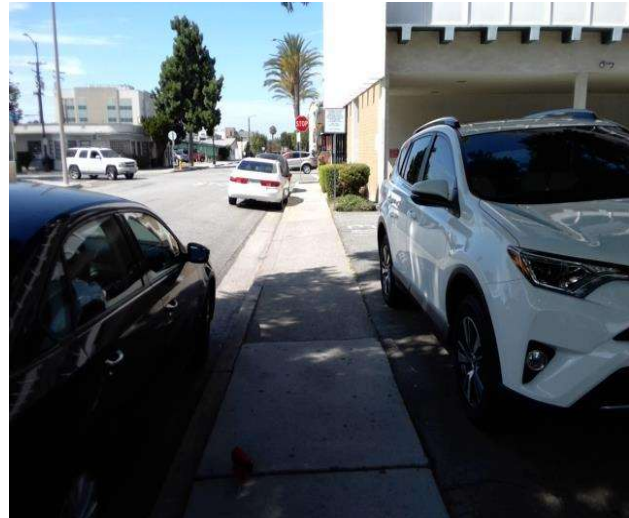
Recommendation

Ensure that the change in elevation is within the recommended value.

Recommendation Up to 0.25 inches

Costing Info (Estimated)

Remove tripping hazards \$198



Code Reference ADA 206, 302

Progress

| | | | |
|-------------------------|-------------|-----------------------|------------|
| Record Number | 471801 | Resolution | None |
| Progress | Not_Started | Priority | Two |
| Actual Date | | Projected Date | 06/30/2021 |
| Actual Cost | \$0.00 | Contractor | |
| Comments | No Comments | New Value | 0 |
| Assignment | None | | |
| Designated Staff | | | |

New Street - 6th Street to 2nd Street

Sidewalks - Exterior : Sidewalks , Change in Level

West Side

Change in Level North of 3rd Street @ 33.943055102720, -118.132117241621

Sidewalks , Change in Level : Change in Level Non Beveled

Finding

There is a change in elevation greater than recommended value.

On-Site Finding 0.50 inches

Recommendation

Ensure that the change in elevation is within the recommended value.

Recommendation Up to 0.25 inches

Costing Info (Estimated)

Remove tripping hazards \$198



Code Reference ADA 206, 302

Progress

| | | | |
|-------------------------|-------------|-----------------------|------------|
| Record Number | 471802 | Resolution | None |
| Progress | Not_Started | Priority | Two |
| Actual Date | | Projected Date | 06/30/2021 |
| Actual Cost | \$0.00 | Contractor | |
| Comments | No Comments | New Value | 0 |
| Assignment | None | | |
| Designated Staff | | | |

New Street - 6th Street to 2nd Street

Sidewalks - Exterior : Sidewalks , Change in Level

West Side

Change in Level North of 3rd Street @ 33.943055102720, -118.132117241621

Sidewalks , Change in Level : Change in Level Non Beveled

Finding

There is a change in elevation greater than recommended value.

On-Site Finding 1.00 inches

Recommendation

Ensure that the change in elevation is within the recommended value.

Recommendation Up to 0.25 inches

Costing Info (Estimated)

Remove tripping hazards \$198



Code Reference ADA 206, 302

Progress

| | | | |
|-------------------------|-------------|-----------------------|------------|
| Record Number | 471810 | Resolution | None |
| Progress | Not_Started | Priority | Two |
| Actual Date | | Projected Date | 06/30/2021 |
| Actual Cost | \$0.00 | Contractor | |
| Comments | No Comments | New Value | 0 |
| Assignment | None | | |
| Designated Staff | | | |

New Street - 6th Street to 2nd Street

Sidewalks - Exterior : Sidewalks , Change in Level

West Side

Change in Level North of 4th Street @ 33.943308768489, -118.131905347109

Sidewalks , Change in Level : Change in Level Non Beveled

Finding

There is a change in elevation greater than recommended value.

On-Site Finding 0.75 inches

Recommendation

Ensure that the change in elevation is within the recommended value.

Recommendation Up to 0.25 inches

Costing Info (Estimated)

Remove tripping hazards \$198



Code Reference ADA 206, 302

Progress

| | | | |
|-------------------------|-------------|-----------------------|------------|
| Record Number | 471812 | Resolution | None |
| Progress | Not_Started | Priority | Two |
| Actual Date | | Projected Date | 06/30/2021 |
| Actual Cost | \$0.00 | Contractor | |
| Comments | No Comments | New Value | 0 |
| Assignment | None | | |
| Designated Staff | | | |

New Street - 6th Street to 2nd Street

Sidewalks - Exterior : Sidewalks , Change in Level

West Side

Change in Level North of 4th Street @ 33.943504580145, -118.131725639105

Sidewalks , Change in Level : Change in Level Non Beveled

Finding

There is a change in elevation greater than recommended value.

On-Site Finding 0.62 inches

Recommendation

Ensure that the change in elevation is within the recommended value.

Recommendation Up to 0.25 inches

Costing Info (Estimated)

Remove tripping hazards \$198



Code Reference ADA 206, 302

Progress

| | | | |
|-------------------------|-------------|-----------------------|------------|
| Record Number | 471813 | Resolution | None |
| Progress | Not_Started | Priority | Two |
| Actual Date | | Projected Date | 06/30/2021 |
| Actual Cost | \$0.00 | Contractor | |
| Comments | No Comments | New Value | 0 |
| Assignment | None | | |
| Designated Staff | | | |

New Street - 6th Street to 2nd Street

Sidewalks - Exterior : Sidewalks , Change in Level

West Side

Change in Level North of 4th Street @ 33.943513480664, -118.131720274687

Sidewalks , Change in Level : Change in Level Non Beveled

Finding

There is a change in elevation greater than recommended value.

On-Site Finding 0.62 inches

Recommendation

Ensure that the change in elevation is within the recommended value.

Recommendation Up to 0.25 inches

Costing Info (Estimated)

Remove tripping hazards \$198



Code Reference ADA 206, 302

Progress

| | | | |
|-------------------------|-------------|-----------------------|------------|
| Record Number | 471817 | Resolution | None |
| Progress | Not_Started | Priority | Two |
| Actual Date | | Projected Date | 06/30/2021 |
| Actual Cost | \$0.00 | Contractor | |
| Comments | No Comments | New Value | 0 |
| Assignment | None | | |
| Designated Staff | | | |

New Street - 6th Street to 2nd Street

Sidewalks - Exterior : Sidewalks , Change in Level

West Side

Change in Level North of 4th Street @ 33.943536844522, -118.131708204746

Sidewalks , Change in Level : Change in Level Non Beveled

Finding

There is a change in elevation greater than recommended value.

On-Site Finding 0.75 inches

Recommendation

Ensure that the change in elevation is within the recommended value.

Recommendation Up to 0.25 inches

Costing Info (Estimated)

Remove tripping hazards \$198



Code Reference ADA 206, 302

Notes : Surface is Rough And Uneven

Progress

| | | | |
|-------------------------|-------------|-----------------------|------------|
| Record Number | 471804 | Resolution | None |
| Progress | Not_Started | Priority | Two |
| Actual Date | | Projected Date | 06/30/2021 |
| Actual Cost | \$0.00 | Contractor | |
| Comments | No Comments | New Value | 0 |
| Assignment | None | | |
| Designated Staff | | | |

New Street - 6th Street to 2nd Street

Sidewalks - Exterior : Sidewalks , Change in Level

West Side

Change in Level North of 4th Street @ 33.943906215142, -118.131352812052

Sidewalks , Change in Level : Change in Level Non Beveled

Finding

There is a change in elevation greater than recommended value.

On-Site Finding 1.00 inches

Recommendation

Ensure that the change in elevation is within the recommended value.

Recommendation Up to 0.25 inches

Costing Info (Estimated)

Remove tripping hazards \$198



Code Reference ADA 206, 302

Progress

| | | | |
|-------------------------|-------------|-----------------------|------------|
| Record Number | 471811 | Resolution | None |
| Progress | Not_Started | Priority | Two |
| Actual Date | | Projected Date | 06/30/2021 |
| Actual Cost | \$0.00 | Contractor | |
| Comments | No Comments | New Value | 0 |
| Assignment | None | | |
| Designated Staff | | | |

New Street - 6th Street to 2nd Street

Sidewalks - Exterior : Sidewalks , Change in Level

West Side

Change in Level North of 5th Street @ 33.944888599685, -118.130623251200

Sidewalks , Change in Level : Change in Level Non Beveled

Finding

There is a change in elevation greater than recommended value.

On-Site Finding 1.25 inches

Recommendation

Ensure that the change in elevation is within the recommended value.

Recommendation Up to 0.25 inches

Costing Info (Estimated)

Remove tripping hazards \$198



Code Reference ADA 206, 302

Progress

| | | | |
|-------------------------|-------------|-----------------------|------------|
| Record Number | 471807 | Resolution | None |
| Progress | Not_Started | Priority | Two |
| Actual Date | | Projected Date | 06/30/2020 |
| Actual Cost | \$0.00 | Contractor | |
| Comments | No Comments | New Value | 0 |
| Assignment | None | | |
| Designated Staff | | | |

New Street - 6th Street to 2nd Street

Sidewalks - Exterior : Sidewalks , Change in Level

West Side

Change in Level North of 5th Street @ 33.945041018468, -118.130489140749

Sidewalks , Change in Level : Change in Level Non Beveled

Finding

There is a change in elevation greater than recommended value.

On-Site Finding 0.75 inches

Recommendation

Ensure that the change in elevation is within the recommended value.

Recommendation Up to 0.25 inches

Costing Info (Estimated)

Remove tripping hazards \$198



Code Reference ADA 206, 302

Progress

| | | | |
|-------------------------|-------------|-----------------------|------------|
| Record Number | 471816 | Resolution | None |
| Progress | Not_Started | Priority | Two |
| Actual Date | | Projected Date | 06/30/2021 |
| Actual Cost | \$0.00 | Contractor | |
| Comments | No Comments | New Value | 0 |
| Assignment | None | | |
| Designated Staff | | | |

New Street - 6th Street to 2nd Street

Sidewalks - Exterior : Sidewalks , Change in Level

West Side

Change in Level North of 5th Street @ 33.945041018468, -118.130489140749

Sidewalks , Change in Level : Change in Level Non Beveled

Finding

There is a change in elevation greater than recommended value.

On-Site Finding 1.25 inches

Recommendation

Ensure that the change in elevation is within the recommended value.

Recommendation Up to 0.25 inches

Costing Info (Estimated)

Remove tripping hazards \$198



Code Reference ADA 206, 302

Progress

| | | | |
|-------------------------|-------------|-----------------------|------------|
| Record Number | 471821 | Resolution | None |
| Progress | Not_Started | Priority | Two |
| Actual Date | | Projected Date | 06/30/2020 |
| Actual Cost | \$0.00 | Contractor | |
| Comments | No Comments | New Value | 0 |
| Assignment | None | | |
| Designated Staff | | | |

New Street - 6th Street to 2nd Street

Sidewalks - Exterior : Sidewalks , Change in Level

West Side

Change in Level North of 5th Street @ 33.945072169718, -118.130463659763

Sidewalks , Change in Level : Change in Level Non Beveled

Finding

There is a change in elevation greater than recommended value.

On-Site Finding 0.50 inches

Recommendation

Ensure that the change in elevation is within the recommended value.

Recommendation Up to 0.25 inches

Costing Info (Estimated)

Remove tripping hazards \$198



Code Reference ADA 206, 302

Progress

| | | | |
|-------------------------|-------------|-----------------------|------------|
| Record Number | 471805 | Resolution | None |
| Progress | Not_Started | Priority | Two |
| Actual Date | | Projected Date | 06/30/2021 |
| Actual Cost | \$0.00 | Contractor | |
| Comments | No Comments | New Value | 0 |
| Assignment | None | | |
| Designated Staff | | | |

New Street - 6th Street to 2nd Street

Sidewalks - Exterior : Sidewalks , Change in Level

West Side

Change in Level North of 5th Street @ 33.945072169718, -118.130463659763

Sidewalks , Change in Level : Change in Level Non Beveled

Finding

There is a change in elevation greater than recommended value.

On-Site Finding 0.50 inches

Recommendation

Ensure that the change in elevation is within the recommended value.

Recommendation Up to 0.25 inches

Costing Info (Estimated)

Remove tripping hazards \$198



Code Reference ADA 206, 302

Notes : Surface is Rough And Uneven

Progress

| | | | |
|-------------------------|-------------|-----------------------|------------|
| Record Number | 471815 | Resolution | None |
| Progress | Not_Started | Priority | Two |
| Actual Date | | Projected Date | 06/30/2021 |
| Actual Cost | \$0.00 | Contractor | |
| Comments | No Comments | New Value | 0 |
| Assignment | None | | |
| Designated Staff | | | |

New Street - 6th Street to 2nd Street

Sidewalks - Exterior : Sidewalks , Change in Level

West Side

Change in Level North of 4th Street @ 33.943385535612, -118.131831586361

Sidewalks , Change in Level : Change in Level Non Beveled

Finding

There is a change in elevation greater than recommended value.

On-Site Finding 0.37 inches

Recommendation

Ensure that the change in elevation is within the recommended value.

Recommendation Up to 0.25 inches

Costing Info (Estimated)

Remove tripping hazards \$198



Code Reference ADA 206, 302

Progress

| | | | |
|-------------------------|-------------|-----------------------|------------|
| Record Number | 471820 | Resolution | None |
| Progress | Not_Started | Priority | Three |
| Actual Date | | Projected Date | 12/31/2022 |
| Actual Cost | \$0.00 | Contractor | |
| Comments | No Comments | New Value | 0 |
| Assignment | None | | |
| Designated Staff | | | |

New Street - 6th Street to 2nd Street

Curb Ramps - Exterior : Curb Ramp

Northeast Corner of 2nd Street @ 33.941481913045, -118.133229017258

Curb Ramp : No Detectable Warnings

Finding

The curb ramp does not provide a detectable warning surface which includes truncated domes.

On-Site Finding Not Found

Recommendation

Provide compliant detectable warnings to surface.

Recommendation See Recommendation

Costing Info (Estimated)

Provide detectable warning to surface \$248



Code Reference CA 11B-406.5.12

Progress

| | | | |
|-------------------------|-------------|-----------------------|------------|
| Record Number | 471845 | Resolution | None |
| Progress | Not_Started | Priority | Seven |
| Actual Date | | Projected Date | 06/30/2032 |
| Actual Cost | \$0.00 | Contractor | |
| Comments | No Comments | New Value | 0 |
| Assignment | None | | |
| Designated Staff | | | |

New Street - 6th Street to 2nd Street

Curb Ramps - Exterior : Curb Ramp

Northeast Corner of 2nd Street @ 33.941481913045, -118.133229017258

Curb Ramp : Curb Ramp Slope

Finding

The running slope is greater than allowed.

On-Site Finding 8.90 percent

Recommendation

Provide a compliant curb ramp.

Recommendation Up to 8.33 percent

Costing Info (Estimated)

Install curb ramp \$1,300



Code Reference ADA 406, 406.1, 405.2, CA 11B-406

Progress

| | | | |
|-------------------------|-------------|-----------------------|------------|
| Record Number | 471846 | Resolution | None |
| Progress | Not_Started | Priority | Seven |
| Actual Date | | Projected Date | 06/30/2032 |
| Actual Cost | \$0.00 | Contractor | |
| Comments | No Comments | New Value | 0 |
| Assignment | None | | |
| Designated Staff | | | |

New Street - 6th Street to 2nd Street

Curb Ramps - Exterior : Curb Ramp , Landings and Transitions

Northeast Corner of 2nd Street @ 33.941481913045, -118.133229017258

Top Landing

Curb Ramp , Landings and Transitions : Top Landing Slope

Finding

The slope at the top landing is greater than allowed.

On-Site Finding 4.10 percent

Recommendation

Provide a top landing surface that does not exceed the maximum slope and cross slope. Provide a sufficient maneuvering clearance that does not accumulate water.

Recommendation Up to 2.08 percent

Costing Info (Estimated)

Provide compliant landing \$1,260



Code Reference ADA 402, 406.4, 403.3, 406.1, CA 11B-406.5.3

Progress

| | | | |
|-------------------------|-------------|-----------------------|------------|
| Record Number | 471847 | Resolution | None |
| Progress | Not_Started | Priority | Seven |
| Actual Date | | Projected Date | 06/30/2032 |
| Actual Cost | \$0.00 | Contractor | |
| Comments | No Comments | | |
| Assignment | None | New Value | 0 |
| Designated Staff | | | |

New Street - 6th Street to 2nd Street

Curb Ramps - Exterior : Curb Ramp , Landings and Transitions

Northeast Corner of 2nd Street @ 33.941481913045, -118.133229017258

Top Landing

Curb Ramp , Landings and Transitions : Top Landing Clear Length - Landings

Finding

There is not enough top landing clear length.

On-Site Finding 44.00 inches

Recommendation

Provide a level top landing with enough clear length.

Recommendation At least 48.00 inches

Costing Info (Estimated)

Provide compliant landing \$240



Code Reference ADA 406, 406.4, CA 11B-406.5.3

Progress

| | | | |
|-------------------------|-------------|-----------------------|------------|
| Record Number | 471848 | Resolution | None |
| Progress | Not_Started | Priority | Seven |
| Actual Date | | Projected Date | 06/30/2032 |
| Actual Cost | \$0.00 | Contractor | |
| Comments | No Comments | | |
| Assignment | None | New Value | 0 |
| Designated Staff | | | |

New Street - 6th Street to 2nd Street

Curb Ramps - Exterior : Curb Ramp

Northeast Corner of 3rd Street @ 33.942301888943, -118.132535666227

Curb Ramp : No Detectable Warnings

Finding

The curb ramp does not provide a detectable warning surface which includes truncated domes.

On-Site Finding Not Found

Recommendation

Provide compliant detectable warnings to surface.

Recommendation See Recommendation

Costing Info (Estimated)

Provide detectable warning to surface \$248



Code Reference CA 11B-406.5.12

Progress

| | | | |
|-------------------------|-------------|-----------------------|------------|
| Record Number | 471850 | Resolution | None |
| Progress | Not_Started | Priority | Seven |
| Actual Date | | Projected Date | 06/30/2032 |
| Actual Cost | \$0.00 | Contractor | |
| Comments | No Comments | New Value | 0 |
| Assignment | None | | |
| Designated Staff | | | |

New Street - 6th Street to 2nd Street

Curb Ramps - Exterior : Curb Ramp

Northeast Corner of 3rd Street @ 33.942301888943, -118.132535666227

Curb Ramp : Parallel Curb Ramp Left Side Slope

Finding

The running slope is greater than allowed.

On-Site Finding 10.50 percent

Recommendation

Provide a compliant curb ramp.

Recommendation Up to 8.33 percent

Costing Info (Estimated)

Install curb ramp \$1,300



Code Reference ADA 406.1, 405.2, CA 11B-406

Progress

| | | | |
|-------------------------|-------------|-----------------------|------------|
| Record Number | 471851 | Resolution | None |
| Progress | Not_Started | Priority | Seven |
| Actual Date | | Projected Date | 06/30/2032 |
| Actual Cost | \$0.00 | Contractor | |
| Comments | No Comments | | |
| Assignment | None | New Value | 0 |
| Designated Staff | | | |

New Street - 6th Street to 2nd Street

Curb Ramps - Exterior : Curb Ramp

Northeast Corner of 3rd Street @ 33.942301888943, -118.132535666227

Curb Ramp : Parallel Curb Ramp Left Side Cross Slope

Finding

The cross slope is greater than allowed.

On-Site Finding 3.70 percent

Recommendation

Provide a compliant curb ramp.

Recommendation Up to 2.08 percent

Costing Info (Estimated)

Install curb ramp \$1,300



Code Reference ADA 406.1, 405.3, CA 11B-406.5.7

Progress

| | | | |
|-------------------------|-------------|-----------------------|------------|
| Record Number | 471852 | Resolution | None |
| Progress | Not_Started | Priority | Seven |
| Actual Date | | Projected Date | 06/30/2032 |
| Actual Cost | \$0.00 | Contractor | |
| Comments | No Comments | | |
| Assignment | None | New Value | 0 |
| Designated Staff | | | |

New Street - 6th Street to 2nd Street

Curb Ramps - Exterior : Curb Ramp

Northeast Corner of 3rd Street @ 33.942301888943, -118.132535666227

Curb Ramp : Parallel Curb Ramp Right Side Slope

Finding

The running slope is greater than allowed.

On-Site Finding 9.90 percent

Recommendation

Provide a compliant curb ramp.

Recommendation Up to 8.33 percent

Costing Info (Estimated)

Install curb ramp \$1,300



Code Reference ADA 406.1, 405.2, CA 11B-406

Progress

| | | | |
|-------------------------|-------------|-----------------------|------------|
| Record Number | 471853 | Resolution | None |
| Progress | Not_Started | Priority | Seven |
| Actual Date | | Projected Date | 06/30/2032 |
| Actual Cost | \$0.00 | Contractor | |
| Comments | No Comments | | |
| Assignment | None | New Value | 0 |
| Designated Staff | | | |

New Street - 6th Street to 2nd Street

Curb Ramps - Exterior : Curb Ramp , Landings and Transitions

Northeast Corner of 3rd Street @ 33.942301888943, -118.132535666227

Bottom Landing

Curb Ramp , Landings and Transitions : Bottom Landing Slope

Finding

The slope at the bottom landing is greater than allowed.

On-Site Finding 3.30 percent

Recommendation

Provide a compliant bottom landing that does not exceed the maximum slope requirements.

Recommendation Up to 2.08 percent

Costing Info (Estimated)

Provide compliant landing \$240



Code Reference ADA 402, 406.4, 406.2, 403.3, 406.1, CA 11B-406.5.3

Progress

| | | | |
|-------------------------|-------------|-----------------------|------------|
| Record Number | 471854 | Resolution | None |
| Progress | Not_Started | Priority | Seven |
| Actual Date | | Projected Date | 06/30/2032 |
| Actual Cost | \$0.00 | Contractor | |
| Comments | No Comments | New Value | 0 |
| Assignment | None | | |
| Designated Staff | | | |

New Street - 6th Street to 2nd Street

Curb Ramps - Exterior : Curb Ramp , Landings and Transitions

Northeast Corner of 3rd Street @ 33.942301888943, -118.132535666227

Top Landing

Curb Ramp , Landings and Transitions : Top Landing Slope

Finding

The slope at the top landing is greater than allowed.

On-Site Finding 2.90 percent

Recommendation

Provide a top landing surface that does not exceed the maximum slope and cross slope. Provide a sufficient maneuvering clearance that does not accumulate water.

Recommendation Up to 2.08 percent

Costing Info (Estimated)

Provide compliant landing \$1,260



Code Reference ADA 402, 406.4, 403.3, 406.1, CA 11B-406.5.3

Progress

| | | | |
|-------------------------|-------------|-----------------------|------------|
| Record Number | 471855 | Resolution | None |
| Progress | Not_Started | Priority | Seven |
| Actual Date | | Projected Date | 06/30/2032 |
| Actual Cost | \$0.00 | Contractor | |
| Comments | No Comments | New Value | 0 |
| Assignment | None | | |
| Designated Staff | | | |

New Street - 6th Street to 2nd Street

Curb Ramps - Exterior : Curb Ramp

Northeast Corner of 4th Street @ 33.943127419793, -118.131840974092

Curb Ramp : No Detectable Warnings

Finding

The curb ramp does not provide a detectable warning surface which includes truncated domes.

On-Site Finding Not Found

Recommendation

Provide compliant detectable warnings to surface.

Recommendation See Recommendation

Costing Info (Estimated)

Provide detectable warning to surface \$248



Code Reference CA 11B-406.5.12

Progress

| | | | |
|-------------------------|-------------|-----------------------|------------|
| Record Number | 471842 | Resolution | None |
| Progress | Not_Started | Priority | Seven |
| Actual Date | | Projected Date | 06/30/2032 |
| Actual Cost | \$0.00 | Contractor | |
| Comments | No Comments | New Value | 0 |
| Assignment | None | | |
| Designated Staff | | | |

New Street - 6th Street to 2nd Street

Curb Ramps - Exterior : Curb Ramp

Northeast Corner of 4th Street @ 33.943127419793, -118.131840974092

Bottom Landing

Curb Ramp : Bottom Landing Slope

Finding

The bottom landing of the curb ramp is on the street, and the slope of the bottom landing is not compliant.

On-Site Finding 10.70 percent

Recommendation

Ensure the bottom landing slope is compliant and provides a smooth transition.

Recommendation Up to 5.00 percent

Costing Info (Estimated)

Repave landing \$1,260



Code Reference ADA 406, 406.2,CA 11B-406.5.8

Progress

| | | | |
|-------------------------|-------------|-----------------------|------------|
| Record Number | 471843 | Resolution | None |
| Progress | Not_Started | Priority | Seven |
| Actual Date | | Projected Date | 06/30/2032 |
| Actual Cost | \$0.00 | Contractor | |
| Comments | No Comments | New Value | 0 |
| Assignment | None | | |
| Designated Staff | | | |

New Street - 6th Street to 2nd Street

Curb Ramps - Exterior : Curb Ramp , Landings and Transitions

Northeast Corner of 4th Street @ 33.943127419793, -118.131840974092

Top Landing

Curb Ramp , Landings and Transitions : Top Landing Clear Length - Landings

Finding

There is not enough top landing clear length.

On-Site Finding 36.00 inches

Recommendation

Provide a level top landing with enough clear length.

Recommendation At least 48.00 inches

Costing Info (Estimated)

Provide compliant landing \$240



Code Reference ADA 406, 406.4,CA 11B-406.5.3

Progress

| | | | |
|-------------------------|-------------|-----------------------|------------|
| Record Number | 471844 | Resolution | None |
| Progress | Not_Started | Priority | Seven |
| Actual Date | | Projected Date | 06/30/2032 |
| Actual Cost | \$0.00 | Contractor | |
| Comments | No Comments | New Value | 0 |
| Assignment | None | | |
| Designated Staff | | | |

New Street - 6th Street to 2nd Street

Curb Ramps - Exterior : Curb Ramp

Northeast Corner of 5th Street @ 33.944157653262, -118.130926340818

Curb Ramp : Parallel Curb Ramp Left Side Slope

Finding

The running slope is greater than allowed.

On-Site Finding 9.00 percent

Recommendation

Provide a compliant curb ramp.

Recommendation Up to 8.33 percent

Costing Info (Estimated)

Install curb ramp \$1,300



Code Reference ADA 406.1, 405.2, CA 11B-406

Progress

| | | | |
|-------------------------|-------------|-----------------------|------------|
| Record Number | 471782 | Resolution | None |
| Progress | Not_Started | Priority | Seven |
| Actual Date | | Projected Date | 06/30/2032 |
| Actual Cost | \$0.00 | Contractor | |
| Comments | No Comments | New Value | 0 |
| Assignment | None | | |
| Designated Staff | | | |

New Street - 6th Street to 2nd Street

Curb Ramps - Exterior : Curb Ramp , Landings and Transitions

Northeast Corner of 5th Street @ 33.944157653262, -118.130926340818

Top Landing

Curb Ramp , Landings and Transitions : Top Landing Slope

Finding

The slope at the top landing is greater than allowed.

On-Site Finding 12.60 percent

Recommendation

Provide a top landing surface that does not exceed the maximum slope and cross slope. Provide a sufficient maneuvering clearance that does not accumulate water.

Recommendation Up to 2.08 percent

Costing Info (Estimated)

Provide compliant landing \$1,260



Code Reference ADA 402, 406.4, 403.3, 406.1, CA 11B-406.5.3

Progress

| | | | |
|-------------------------|-------------|-----------------------|------------|
| Record Number | 471783 | Resolution | None |
| Progress | Not_Started | Priority | Seven |
| Actual Date | | Projected Date | 06/30/2032 |
| Actual Cost | \$0.00 | Contractor | |
| Comments | No Comments | New Value | 0 |
| Assignment | None | | |
| Designated Staff | | | |

New Street - 6th Street to 2nd Street

Curb Ramps - Exterior : Curb Ramp , Landings and Transitions

Northeast Corner of 5th Street @ 33.944157653262, -118.130926340818

Top Landing

Curb Ramp , Landings and Transitions : Top Landing Right Side Slope - Parallel Curb Ramp

Finding

The slope at the top landing is greater than allowed.

On-Site Finding 3.00 percent

Recommendation

Provide a top landing surface that does not exceed the maximum slope and cross slope. Provide a sufficient maneuvering clearance that does not accumulate water.

Recommendation Up to 2.08 percent

Costing Info (Estimated)

Provide compliant landing \$1,260



Code Reference ADA 406.4, 403.3, 406.1, CA 11B-406.5.3

Progress

| | | | |
|-------------------------|-------------|-----------------------|------------|
| Record Number | 471784 | Resolution | None |
| Progress | Not_Started | Priority | Seven |
| Actual Date | | Projected Date | 06/30/2032 |
| Actual Cost | \$0.00 | Contractor | |
| Comments | No Comments | | |
| Assignment | None | New Value | 0 |
| Designated Staff | | | |

New Street - 6th Street to 2nd Street

Curb Ramps - Exterior : Curb Ramp , Landings and Transitions

Northeast Corner of 5th Street @ 33.944157653262, -118.130926340818

Top Landing

Curb Ramp , Landings and Transitions : Top Landing Right Side Clear Length - Parallel Curb Ramp

Finding

There is not enough top landing clear length.

On-Site Finding 42.50 inches

Recommendation

Provide a level top landing with enough clear length.

Recommendation At least 48.00 inches

Costing Info (Estimated)

Provide compliant landing \$240



Code Reference ADA 406.4,CA 11B-406.5.3

Progress

| | | | |
|-------------------------|-------------|-----------------------|------------|
| Record Number | 471785 | Resolution | None |
| Progress | Not_Started | Priority | Seven |
| Actual Date | | Projected Date | 06/30/2032 |
| Actual Cost | \$0.00 | Contractor | |
| Comments | No Comments | New Value | 0 |
| Assignment | None | | |
| Designated Staff | | | |

New Street - 6th Street to 2nd Street

Curb Ramps - Exterior : Curb Ramp

Northwest Corner of 2nd Street @ 33.941569807719, -118.133356422186

Curb Ramp : No Detectable Warnings

Finding

The curb ramp does not provide a detectable warning surface which includes truncated domes.

On-Site Finding Not Found

Recommendation

Provide compliant detectable warnings to surface.

Recommendation See Recommendation

Costing Info (Estimated)

Provide detectable warning to surface \$248



Code Reference CA 11B-406.5.12

Progress

| | | | |
|-------------------------|-------------|-----------------------|------------|
| Record Number | 471838 | Resolution | None |
| Progress | Not_Started | Priority | Seven |
| Actual Date | | Projected Date | 06/30/2032 |
| Actual Cost | \$0.00 | Contractor | |
| Comments | No Comments | New Value | 0 |
| Assignment | None | | |
| Designated Staff | | | |

New Street - 6th Street to 2nd Street

Curb Ramps - Exterior : Curb Ramp

Northwest Corner of 2nd Street @ 33.941569807719, -118.133356422186

Curb Ramp : Side Flare Slope

Finding

The slope of the curb ramp side flare is greater than allowed.

On-Site Finding 11.00 percent

Recommendation

Provide curb ramp side flares with a compliant slope.

Recommendation Up to 10.00 percent

Costing Info (Estimated)

Install flared sides \$1,300



Code Reference ADA 406, 406.3, CA 11B-406.2.2

Progress

| | | | |
|-------------------------|-------------|-----------------------|------------|
| Record Number | 471839 | Resolution | None |
| Progress | Not_Started | Priority | Seven |
| Actual Date | | Projected Date | 06/30/2032 |
| Actual Cost | \$0.00 | Contractor | |
| Comments | No Comments | | |
| Assignment | None | New Value | 0 |
| Designated Staff | | | |

New Street - 6th Street to 2nd Street

Curb Ramps - Exterior : Curb Ramp

Northwest Corner of 2nd Street @ 33.941569807719, -118.133356422186

Bottom Landing

Curb Ramp : Bottom Landing Slope

Finding

The bottom landing of the curb ramp is on the street, and the slope of the bottom landing is not compliant.

On-Site Finding 6.20 percent

Recommendation

Ensure the bottom landing slope is compliant and provides a smooth transition.

Recommendation Up to 5.00 percent

Costing Info (Estimated)

Repave landing \$1,260



Code Reference ADA 406, 406.2, CA 11B-406.5.8

Progress

| | | | |
|-------------------------|-------------|-----------------------|------------|
| Record Number | 471840 | Resolution | None |
| Progress | Not_Started | Priority | Seven |
| Actual Date | | Projected Date | 06/30/2032 |
| Actual Cost | \$0.00 | Contractor | |
| Comments | No Comments | New Value | 0 |
| Assignment | None | | |
| Designated Staff | | | |

New Street - 6th Street to 2nd Street

Curb Ramps - Exterior : Curb Ramp , Landings and Transitions

Northwest Corner of 2nd Street @ 33.941569807719, -118.133356422186

Top Landing

Curb Ramp , Landings and Transitions : Top Landing Slope

Finding

The slope at the top landing is greater than allowed.

On-Site Finding 2.70 percent

Recommendation

Provide a top landing surface that does not exceed the maximum slope and cross slope. Provide a sufficient maneuvering clearance that does not accumulate water.

Recommendation Up to 2.08 percent

Costing Info (Estimated)

Provide compliant landing \$1,260



Code Reference ADA 402, 406.4, 403.3, 406.1, CA 11B-406.5.3

Progress

| | | | |
|-------------------------|-------------|-----------------------|------------|
| Record Number | 471841 | Resolution | None |
| Progress | Not_Started | Priority | Seven |
| Actual Date | | Projected Date | 06/30/2032 |
| Actual Cost | \$0.00 | Contractor | |
| Comments | No Comments | New Value | 0 |
| Assignment | None | | |
| Designated Staff | | | |

New Street - 6th Street to 2nd Street

Curb Ramps - Exterior : Curb Ramp

Northwest Corner of 3rd Street @ 33.942380882133, -118.132699280977

Curb Ramp : No Detectable Warnings

Finding

The curb ramp does not provide a detectable warning surface which includes truncated domes.

On-Site Finding Not Found

Recommendation

Provide compliant detectable warnings to surface.

Recommendation See Recommendation

Costing Info (Estimated)

Provide detectable warning to surface \$248



Code Reference CA 11B-406.5.12

Progress

| | | | |
|-------------------------|-------------|-----------------------|------------|
| Record Number | 471889 | Resolution | None |
| Progress | Not_Started | Priority | Seven |
| Actual Date | | Projected Date | 06/30/2032 |
| Actual Cost | \$0.00 | Contractor | |
| Comments | No Comments | New Value | 0 |
| Assignment | None | | |
| Designated Staff | | | |

New Street - 6th Street to 2nd Street

Curb Ramps - Exterior : Curb Ramp

Northwest Corner of 3rd Street @ 33.942380882133, -118.132699280977

Curb Ramp : Parallel Curb Ramp Left Side Slope

Finding

The running slope is greater than allowed.

On-Site Finding 8.50 percent

Recommendation

Provide a compliant curb ramp.

Recommendation Up to 8.33 percent

Costing Info (Estimated)

Install curb ramp \$1,300



Code Reference ADA 406.1, 405.2, CA 11B-406

Progress

| | | | |
|-------------------------|-------------|-----------------------|------------|
| Record Number | 471890 | Resolution | None |
| Progress | Not_Started | Priority | Seven |
| Actual Date | | Projected Date | 06/30/2032 |
| Actual Cost | \$0.00 | Contractor | |
| Comments | No Comments | New Value | 0 |
| Assignment | None | | |
| Designated Staff | | | |

New Street - 6th Street to 2nd Street

Curb Ramps - Exterior : Curb Ramp

Northwest Corner of 3rd Street @ 33.942380882133, -118.132699280977

Curb Ramp : Parallel Curb Ramp Right Side Width

Finding

The width of the curb ramp is less than required.

On-Site Finding 36.00 inches

Recommendation

Provide a compliant curb ramp.

Recommendation At least 48.00 inches

Costing Info (Estimated)

Install curb ramp \$1,300



Code Reference ADA 406.1,CA 11B-406.5.2,CA 11B-406

Progress

| | | | |
|-------------------------|-------------|-----------------------|------------|
| Record Number | 471891 | Resolution | None |
| Progress | Not_Started | Priority | Seven |
| Actual Date | | Projected Date | 06/30/2032 |
| Actual Cost | \$0.00 | Contractor | |
| Comments | No Comments | New Value | 0 |
| Assignment | None | | |
| Designated Staff | | | |

New Street - 6th Street to 2nd Street

Curb Ramps - Exterior : Curb Ramp , Landings and Transitions

Northwest Corner of 3rd Street @ 33.942380882133, -118.132699280977

Top Landing

Curb Ramp , Landings and Transitions : Top Landing Slope

Finding

The slope at the top landing is greater than allowed.

On-Site Finding 3.00 percent

Recommendation

Provide a top landing surface that does not exceed the maximum slope and cross slope. Provide a sufficient maneuvering clearance that does not accumulate water.

Recommendation Up to 2.08 percent

Costing Info (Estimated)

Provide compliant landing \$1,260



Code Reference ADA 402, 406.4, 403.3, 406.1, CA 11B-406.5.3

Progress

| | | | |
|-------------------------|-------------|-----------------------|------------|
| Record Number | 471892 | Resolution | None |
| Progress | Not_Started | Priority | Seven |
| Actual Date | | Projected Date | 06/30/2032 |
| Actual Cost | \$0.00 | Contractor | |
| Comments | No Comments | New Value | 0 |
| Assignment | None | | |
| Designated Staff | | | |

New Street - 6th Street to 2nd Street

Curb Ramps - Exterior : Curb Ramp , Landings And Transitions

Northwest Corner of 3rd Street @ 33.942380882133, -118.132699280977

Top Landing

Curb Ramp , Landings And Transitions : Top Landing Right Side
Change in Level

Finding

The transition from the top of the curb ramp to the walk, gutter, or street is abrupt.

On-Site Finding 0.87 inches

Recommendation

Patch the transition area at the top of the curb ramp so that the transition is flush and free of abrupt changes.

Recommendation Up to 0.50 inches

Costing Info (Estimated)

Patch lip at curb ramp \$155



Code Reference ADA 303.1

Progress

| | | | |
|-------------------------|-------------|-----------------------|------------|
| Record Number | 471893 | Resolution | None |
| Progress | Not_Started | Priority | Seven |
| Actual Date | | Projected Date | 06/30/2032 |
| Actual Cost | \$0.00 | Contractor | |
| Comments | No Comments | New Value | 0 |
| Assignment | None | | |
| Designated Staff | | | |

New Street - 6th Street to 2nd Street

Curb Ramps - Exterior : Curb Ramp

Northwest Corner of 4th Street @ 33.943210862492, -118.131989836693

Curb Ramp : No Detectable Warnings

Finding

The curb ramp does not provide a detectable warning surface which includes truncated domes.

On-Site Finding Not Found

Recommendation

Provide compliant detectable warnings to surface.

Recommendation See Recommendation

Costing Info (Estimated)

Provide detectable warning to surface \$248



Code Reference CA 11B-406.5.12

Progress

| | | | |
|-------------------------|-------------|-----------------------|------------|
| Record Number | 471897 | Resolution | None |
| Progress | Not_Started | Priority | Seven |
| Actual Date | | Projected Date | 06/30/2032 |
| Actual Cost | \$0.00 | Contractor | |
| Comments | No Comments | New Value | 0 |
| Assignment | None | | |
| Designated Staff | | | |

New Street - 6th Street to 2nd Street

Curb Ramps - Exterior : Curb Ramp

Northwest Corner of 4th Street @ 33.943210862492, -118.131989836693

Curb Ramp : Curb Ramp Slope

Finding

The running slope is greater than allowed.

On-Site Finding 8.80 percent

Recommendation

Provide a compliant curb ramp.

Recommendation Up to 8.33 percent

Costing Info (Estimated)

Install curb ramp \$1,300



Code Reference ADA 406, 406.1, 405.2, CA 11B-406

Progress

| | | | |
|-------------------------|-------------|-----------------------|------------|
| Record Number | 471898 | Resolution | None |
| Progress | Not_Started | Priority | Seven |
| Actual Date | | Projected Date | 06/30/2032 |
| Actual Cost | \$0.00 | Contractor | |
| Comments | No Comments | | |
| Assignment | None | New Value | 0 |
| Designated Staff | | | |

New Street - 6th Street to 2nd Street

Curb Ramps - Exterior : Curb Ramp

Northwest Corner of 4th Street @ 33.943210862492, -118.131989836693

Curb Ramp : Side Flare Slope

Finding

The slope of the curb ramp side flare is greater than allowed.

On-Site Finding 14.20 percent

Recommendation

Provide curb ramp side flares with a compliant slope.

Recommendation Up to 10.00 percent

Costing Info (Estimated)

Install flared sides \$1,300



Code Reference ADA 406, 406.3, CA 11B-406.2.2

Progress

| | | | |
|-------------------------|-------------|-----------------------|------------|
| Record Number | 471899 | Resolution | None |
| Progress | Not_Started | Priority | Seven |
| Actual Date | | Projected Date | 06/30/2032 |
| Actual Cost | \$0.00 | Contractor | |
| Comments | No Comments | New Value | 0 |
| Assignment | None | | |
| Designated Staff | | | |

New Street - 6th Street to 2nd Street

Curb Ramps - Exterior : Curb Ramp

Northwest Corner of 4th Street @ 33.943210862492, -118.131989836693

Bottom Landing

Curb Ramp : Bottom Landing Slope

Finding

The bottom landing of the curb ramp is on the street, and the slope of the bottom landing is not compliant.

On-Site Finding 17.30 percent

Recommendation

Ensure the bottom landing slope is compliant and provides a smooth transition.

Recommendation Up to 5.00 percent

Costing Info (Estimated)

Repave landing \$1,260



Code Reference ADA 406, 406.2, CA 11B-406.5.8

Progress

| | | | |
|-------------------------|-------------|-----------------------|------------|
| Record Number | 471900 | Resolution | None |
| Progress | Not_Started | Priority | Seven |
| Actual Date | | Projected Date | 06/30/2032 |
| Actual Cost | \$0.00 | Contractor | |
| Comments | No Comments | | |
| Assignment | None | New Value | 0 |
| Designated Staff | | | |

New Street - 6th Street to 2nd Street

Curb Ramps - Exterior : Curb Ramp , Landings and Transitions

Northwest Corner of 4th Street @ 33.943210862492, -118.131989836693

Top Landing

Curb Ramp , Landings and Transitions : Top Landing Slope

Finding

The slope at the top landing is greater than allowed.

On-Site Finding 3.70 percent

Recommendation

Provide a top landing surface that does not exceed the maximum slope and cross slope. Provide a sufficient maneuvering clearance that does not accumulate water.

Recommendation Up to 2.08 percent

Costing Info (Estimated)

Provide compliant landing \$1,260



Code Reference ADA 402, 406.4, 403.3, 406.1, CA 11B-406.5.3

Progress

| | | | |
|-------------------------|-------------|-----------------------|------------|
| Record Number | 471901 | Resolution | None |
| Progress | Not_Started | Priority | Seven |
| Actual Date | | Projected Date | 06/30/2032 |
| Actual Cost | \$0.00 | Contractor | |
| Comments | No Comments | | |
| Assignment | None | New Value | 0 |
| Designated Staff | | | |

New Street - 6th Street to 2nd Street

Curb Ramps - Exterior : Curb Ramp , Landings and Transitions

Northwest Corner of 5th Street @ 33.944218843843, -118.131088614464

Top Landing

Curb Ramp , Landings and Transitions : Top Landing Clear Length - Landings

Finding

There is not enough top landing clear length.

On-Site Finding 37.00 inches

Recommendation

Provide a level top landing with enough clear length.

Recommendation At least 48.00 inches

Costing Info (Estimated)

Provide compliant landing \$240



Code Reference ADA 406, 406.4, CA 11B-406.5.3

Progress

| | | | |
|-------------------------|-------------|-----------------------|------------|
| Record Number | 471849 | Resolution | None |
| Progress | Not_Started | Priority | Seven |
| Actual Date | | Projected Date | 06/30/2032 |
| Actual Cost | \$0.00 | Contractor | |
| Comments | No Comments | New Value | 0 |
| Assignment | None | | |
| Designated Staff | | | |

New Street - 6th Street to 2nd Street

Curb Ramps - Exterior : Curb Ramp

Southeast Corner of 3rd Street @ 33.942182842729, -118.132642954588

Curb Ramp : No Detectable Warnings

Finding

The curb ramp does not provide a detectable warning surface which includes truncated domes.

On-Site Finding Not Found

Recommendation

Provide compliant detectable warnings to surface.

Recommendation See Recommendation

Costing Info (Estimated)

Provide detectable warning to surface \$248



Code Reference CA 11B-406.5.12

Progress

| | | | |
|-------------------------|-------------|-----------------------|------------|
| Record Number | 471883 | Resolution | None |
| Progress | Not_Started | Priority | Seven |
| Actual Date | | Projected Date | 06/30/2032 |
| Actual Cost | \$0.00 | Contractor | |
| Comments | No Comments | New Value | 0 |
| Assignment | None | | |
| Designated Staff | | | |

New Street - 6th Street to 2nd Street

Curb Ramps - Exterior : Curb Ramp

Southeast Corner of 3rd Street @ 33.942182842729, -118.132642954588

Curb Ramp : Curb Ramp Slope

Finding

The running slope is greater than allowed.

On-Site Finding 11.00 percent

Recommendation

Provide a compliant curb ramp.

Recommendation Up to 8.33 percent

Costing Info (Estimated)

Install curb ramp \$1,300



Code Reference ADA 406, 406.1, 405.2, CA 11B-406

Progress

| | | | |
|-------------------------|-------------|-----------------------|------------|
| Record Number | 471884 | Resolution | None |
| Progress | Not_Started | Priority | Seven |
| Actual Date | | Projected Date | 06/30/2032 |
| Actual Cost | \$0.00 | Contractor | |
| Comments | No Comments | | |
| Assignment | None | New Value | 0 |
| Designated Staff | | | |

New Street - 6th Street to 2nd Street

Curb Ramps - Exterior : Curb Ramp

Southeast Corner of 3rd Street @ 33.942182842729, -118.132642954588

Curb Ramp : Side Flare Slope

Finding

The slope of the curb ramp side flare is greater than allowed.

On-Site Finding 11.50 percent

Recommendation

Provide curb ramp side flares with a compliant slope.

Recommendation Up to 10.00 percent

Costing Info (Estimated)

Install flared sides \$1,300



Code Reference ADA 406, 406.3, CA 11B-406.2.2

Progress

| | | | |
|-------------------------|-------------|-----------------------|------------|
| Record Number | 471885 | Resolution | None |
| Progress | Not_Started | Priority | Seven |
| Actual Date | | Projected Date | 06/30/2032 |
| Actual Cost | \$0.00 | Contractor | |
| Comments | No Comments | New Value | 0 |
| Assignment | None | | |
| Designated Staff | | | |

New Street - 6th Street to 2nd Street

Curb Ramps - Exterior : Curb Ramp , Landings and Transitions

Southeast Corner of 3rd Street @ 33.942182842729, -118.132642954588

Bottom Landing

Curb Ramp , Landings and Transitions : Bottom Landing Of Diagonal Curb Ramp - Clear Space

Finding

There is less than the required clear space.

On-Site Finding 40.00 inches

Recommendation

Provide sufficient clear space at the bottom of the curb ramp that does not accumulate water.

Recommendation At least 48.00 inches

Costing Info (Estimated)

Provide compliant landing \$255



Code Reference ADA 406, 406.6, 406.1, 405.10

Progress

| | | | |
|-------------------------|-------------|-----------------------|------------|
| Record Number | 471886 | Resolution | None |
| Progress | Not_Started | Priority | Seven |
| Actual Date | | Projected Date | 06/30/2032 |
| Actual Cost | \$0.00 | Contractor | |
| Comments | No Comments | New Value | 0 |
| Assignment | None | | |
| Designated Staff | | | |

New Street - 6th Street to 2nd Street

Curb Ramps - Exterior : Curb Ramp

Southeast Corner of 3rd Street @ 33.942182842729, -118.132642954588

Bottom Landing

Curb Ramp : Bottom Landing Slope

Finding

The bottom landing of the curb ramp is on the street, and the slope of the bottom landing is not compliant.

On-Site Finding 6.80 percent

Recommendation

Ensure the bottom landing slope is compliant and provides a smooth transition.

Recommendation Up to 5.00 percent

Costing Info (Estimated)

Repave landing \$1,260



Code Reference ADA 406, 406.2,CA 11B-406.5.8

Progress

| | | | |
|-------------------------|-------------|-----------------------|------------|
| Record Number | 471887 | Resolution | None |
| Progress | Not_Started | Priority | Seven |
| Actual Date | | Projected Date | 06/30/2032 |
| Actual Cost | \$0.00 | Contractor | |
| Comments | No Comments | | |
| Assignment | None | New Value | 0 |
| Designated Staff | | | |

New Street - 6th Street to 2nd Street

Curb Ramps - Exterior : Curb Ramp , Landings and Transitions

Southeast Corner of 3rd Street @ 33.942182842729, -118.132642954588

Top Landing

Curb Ramp , Landings and Transitions : Top Landing Slope

Finding

The slope at the top landing is greater than allowed.

On-Site Finding 3.10 percent

Recommendation

Provide a top landing surface that does not exceed the maximum slope and cross slope. Provide a sufficient maneuvering clearance that does not accumulate water.

Recommendation Up to 2.08 percent

Costing Info (Estimated)

Provide compliant landing \$1,260



Code Reference ADA 402, 406.4, 403.3, 406.1, CA 11B-406.5.3

Progress

| | | | |
|-------------------------|-------------|-----------------------|------------|
| Record Number | 471888 | Resolution | None |
| Progress | Not_Started | Priority | Seven |
| Actual Date | | Projected Date | 06/30/2032 |
| Actual Cost | \$0.00 | Contractor | |
| Comments | No Comments | | |
| Assignment | None | New Value | 0 |
| Designated Staff | | | |

New Street - 6th Street to 2nd Street

Curb Ramps - Exterior : Curb Ramp , Landings and Transitions

Southeast Corner of 5th Street @ 33.944045284991, -118.131052404642

Top Landing

Curb Ramp , Landings and Transitions : Top Landing Right Side
Slope - Parallel Curb Ramp

Finding

The slope at the top landing is greater than allowed.

On-Site Finding 3.40 percent

Recommendation

Provide a top landing surface that does not exceed the maximum slope and cross slope. Provide a sufficient maneuvering clearance that does not accumulate water.

Recommendation Up to 2.08 percent

Costing Info (Estimated)

Provide compliant landing \$1,260



Code Reference ADA 406.4, 403.3, 406.1, CA 11B-406.5.3

Progress

| | | | |
|-------------------------|-------------|-----------------------|------------|
| Record Number | 471896 | Resolution | None |
| Progress | Not_Started | Priority | Seven |
| Actual Date | | Projected Date | 06/30/2032 |
| Actual Cost | \$0.00 | Contractor | |
| Comments | No Comments | | |
| Assignment | None | New Value | 0 |
| Designated Staff | | | |

New Street - 6th Street to 2nd Street

Curb Ramps - Exterior : Curb Ramp

Southeast Corner of 6th Street @ 33.945073282263, -118.130267858505

Curb Ramp : No Detectable Warnings

Finding

The curb ramp does not provide a detectable warning surface which includes truncated domes.

On-Site Finding Not Found

Recommendation

Provide compliant detectable warnings to surface.

Recommendation See Recommendation

Costing Info (Estimated)

Provide detectable warning to surface \$248



Code Reference CA 11B-406.5.12

Progress

| | | | |
|-------------------------|-------------|-----------------------|------------|
| Record Number | 471786 | Resolution | None |
| Progress | Not_Started | Priority | Seven |
| Actual Date | | Projected Date | 06/30/2032 |
| Actual Cost | \$0.00 | Contractor | |
| Comments | No Comments | New Value | 0 |
| Assignment | None | | |
| Designated Staff | | | |

New Street - 6th Street to 2nd Street

Curb Ramps - Exterior : Curb Ramp

Southeast Corner of 6th Street @ 33.945073282263, -118.130267858505

Curb Ramp : Curb Ramp Slope

Finding

The running slope is greater than allowed.

On-Site Finding 15.60 percent

Recommendation

Provide a compliant curb ramp.

Recommendation Up to 8.33 percent

Costing Info (Estimated)

Install curb ramp \$1,300



Code Reference ADA 406, 406.1, 405.2, CA 11B-406

Progress

| | | | |
|-------------------------|-------------|-----------------------|------------|
| Record Number | 471787 | Resolution | None |
| Progress | Not_Started | Priority | Seven |
| Actual Date | | Projected Date | 06/30/2032 |
| Actual Cost | \$0.00 | Contractor | |
| Comments | No Comments | | |
| Assignment | None | New Value | 0 |
| Designated Staff | | | |

New Street - 6th Street to 2nd Street

Curb Ramps - Exterior : Curb Ramp

Southeast Corner of 6th Street @ 33.945073282263, -118.130267858505

Curb Ramp : Curb Ramp - Cross Slope

Finding

The cross slope is greater than allowed.

On-Site Finding 3.10 percent

Recommendation

Provide a compliant curb ramp.

Recommendation Up to 2.08 percent

Costing Info (Estimated)

Install curb ramp \$1,300



Code Reference ADA 402, 406.1, 405.3, CA 11B-406.5.7

Progress

| | | | |
|-------------------------|-------------|-----------------------|------------|
| Record Number | 471788 | Resolution | None |
| Progress | Not_Started | Priority | Seven |
| Actual Date | | Projected Date | 06/30/2032 |
| Actual Cost | \$0.00 | Contractor | |
| Comments | No Comments | | |
| Assignment | None | New Value | 0 |
| Designated Staff | | | |

New Street - 6th Street to 2nd Street

Curb Ramps - Exterior : Curb Ramp

Southeast Corner of 6th Street @ 33.945073282263, -118.130267858505

Curb Ramp : Side Flare Slope

Finding

The slope of the curb ramp side flare is greater than allowed.

On-Site Finding 18.10 percent

Recommendation

Provide curb ramp side flares with a compliant slope.

Recommendation Up to 10.00 percent

Costing Info (Estimated)

Install flared sides \$1,300



Code Reference ADA 406, 406.3, CA 11B-406.2.2

Progress

| | | | |
|-------------------------|-------------|-----------------------|------------|
| Record Number | 471789 | Resolution | None |
| Progress | Not_Started | Priority | Seven |
| Actual Date | | Projected Date | 06/30/2032 |
| Actual Cost | \$0.00 | Contractor | |
| Comments | No Comments | New Value | 0 |
| Assignment | None | | |
| Designated Staff | | | |

New Street - 6th Street to 2nd Street

Curb Ramps - Exterior : Curb Ramp

Southeast Corner of 6th Street @ 33.945073282263, -118.130267858505

Bottom Landing

Curb Ramp : Bottom Landing Slope

Finding

The bottom landing of the curb ramp is on the street, and the slope of the bottom landing is not compliant.

On-Site Finding 9.60 percent

Recommendation

Ensure the bottom landing slope is compliant and provides a smooth transition.

Recommendation Up to 5.00 percent

Costing Info (Estimated)

Repave landing \$1,260



Code Reference ADA 406, 406.2,CA 11B-406.5.8

Progress

| | | | |
|-------------------------|-------------|-----------------------|------------|
| Record Number | 471790 | Resolution | None |
| Progress | Not_Started | Priority | Seven |
| Actual Date | | Projected Date | 06/30/2032 |
| Actual Cost | \$0.00 | Contractor | |
| Comments | No Comments | New Value | 0 |
| Assignment | None | | |
| Designated Staff | | | |

New Street - 6th Street to 2nd Street

Curb Ramps - Exterior : Curb Ramp , Landings and Transitions

Southeast Corner of 6th Street @ 33.945073282263, -118.130267858505

Top Landing

Curb Ramp , Landings and Transitions : Top Landing Slope

Finding

The slope at the top landing is greater than allowed.

On-Site Finding 3.00 percent

Recommendation

Provide a top landing surface that does not exceed the maximum slope and cross slope. Provide a sufficient maneuvering clearance that does not accumulate water.

Recommendation Up to 2.08 percent

Costing Info (Estimated)

Provide compliant landing \$1,260



Code Reference ADA 402, 406.4, 403.3, 406.1,CA 11B-406.5.3

Progress

| | | | |
|-------------------------|-------------|-----------------------|------------|
| Record Number | 471791 | Resolution | None |
| Progress | Not_Started | Priority | Seven |
| Actual Date | | Projected Date | 06/30/2032 |
| Actual Cost | \$0.00 | Contractor | |
| Comments | No Comments | | |
| Assignment | None | New Value | 0 |
| Designated Staff | | | |

New Street - 6th Street to 2nd Street

Curb Ramps - Exterior : Curb Ramp , Landings and Transitions

Southeast Corner of 6th Street @ 33.945073282263, -118.130267858505

Top Landing

Curb Ramp , Landings and Transitions : Top Landing Clear Length - Landings

Finding

There is not enough top landing clear length.

On-Site Finding 24.00 inches

Recommendation

Provide a level top landing with enough clear length.

Recommendation At least 48.00 inches

Costing Info (Estimated)

Provide compliant landing \$240



Code Reference ADA 406, 406.4, CA 11B-406.5.3

Progress

| | | | |
|-------------------------|-------------|-----------------------|------------|
| Record Number | 471792 | Resolution | None |
| Progress | Not_Started | Priority | Seven |
| Actual Date | | Projected Date | 06/30/2032 |
| Actual Cost | \$0.00 | Contractor | |
| Comments | No Comments | New Value | 0 |
| Assignment | None | | |
| Designated Staff | | | |

New Street - 6th Street to 2nd Street

Curb Ramps - Exterior : Curb Ramp

Southwest Corner of 3rd Street @ 33.942251822798, -118.132795840502

Curb Ramp : No Detectable Warnings

Finding

The curb ramp does not provide a detectable warning surface which includes truncated domes.

On-Site Finding Not Found

Recommendation

Provide compliant detectable warnings to surface.

Recommendation See Recommendation

Costing Info (Estimated)

Provide detectable warning to surface \$248



Code Reference CA 11B-406.5.12

Progress

| | | | |
|-------------------------|-------------|-----------------------|------------|
| Record Number | 471894 | Resolution | None |
| Progress | Not_Started | Priority | Seven |
| Actual Date | | Projected Date | 06/30/2032 |
| Actual Cost | \$0.00 | Contractor | |
| Comments | No Comments | New Value | 0 |
| Assignment | None | | |
| Designated Staff | | | |

New Street - 6th Street to 2nd Street

Curb Ramps - Exterior : Curb Ramp

Southwest Corner of 3rd Street @ 33.942251822798, -118.132795840502

Curb Ramp : Side Flare Slope

Finding

The slope of the curb ramp side flare is greater than allowed.

On-Site Finding 11.80 percent

Recommendation

Provide curb ramp side flares with a compliant slope.

Recommendation Up to 10.00 percent

Costing Info (Estimated)

Install flared sides \$1,300



Code Reference ADA 406, 406.3, CA 11B-406.2.2

Progress

| | | | |
|-------------------------|-------------|-----------------------|------------|
| Record Number | 471895 | Resolution | None |
| Progress | Not_Started | Priority | Seven |
| Actual Date | | Projected Date | 06/30/2032 |
| Actual Cost | \$0.00 | Contractor | |
| Comments | No Comments | New Value | 0 |
| Assignment | None | | |
| Designated Staff | | | |

New Street - 6th Street to 2nd Street

Curb Ramps - Exterior : Curb Ramp

Southwest Corner of 5th Street @ 33.944045284991, -118.131052404642

Curb Ramp : Parallel Curb Ramp Left Side Width

Finding

The width of the curb ramp is less than required.

On-Site Finding 44.00 inches

Recommendation

Provide a compliant curb ramp.

Recommendation At least 48.00 inches

Costing Info (Estimated)

Install curb ramp \$1,300



Code Reference ADA 406.1,CA 11B-406.5.2,CA 11B-406

Progress

| | | | |
|-------------------------|-------------|-----------------------|------------|
| Record Number | 471779 | Resolution | None |
| Progress | Not_Started | Priority | Seven |
| Actual Date | | Projected Date | 06/30/2032 |
| Actual Cost | \$0.00 | Contractor | |
| Comments | No Comments | New Value | 0 |
| Assignment | None | | |
| Designated Staff | | | |

New Street - 6th Street to 2nd Street

Curb Ramps - Exterior : Curb Ramp

Southwest Corner of 5th Street @ 33.944045284991, -118.131052404642

Curb Ramp : Parallel Curb Ramp Right Side Width

Finding

The width of the curb ramp is less than required.

On-Site Finding 41.00 inches

Recommendation

Provide a compliant curb ramp.

Recommendation At least 48.00 inches

Costing Info (Estimated)

Install curb ramp \$1,300



Code Reference ADA 406.1,CA 11B-406.5.2,CA 11B-406

Progress

| | | | |
|-------------------------|-------------|-----------------------|------------|
| Record Number | 471780 | Resolution | None |
| Progress | Not_Started | Priority | Seven |
| Actual Date | | Projected Date | 06/30/2032 |
| Actual Cost | \$0.00 | Contractor | |
| Comments | No Comments | New Value | 0 |
| Assignment | None | | |
| Designated Staff | | | |

New Street - 6th Street to 2nd Street

Curb Ramps - Exterior : Curb Ramp , Landings and Transitions

Southwest Corner of 5th Street @ 33.944045284991, -118.131052404642

Top Landing

Curb Ramp , Landings and Transitions : Top Landing Right Side
Slope - Parallel Curb Ramp

Finding

The slope at the top landing is greater than allowed.

On-Site Finding 3.90 percent

Recommendation

Provide a top landing surface that does not exceed the maximum slope and cross slope. Provide a sufficient maneuvering clearance that does not accumulate water.

Recommendation Up to 2.08 percent

Costing Info (Estimated)

Provide compliant landing \$1,260



Code Reference ADA 406.4, 403.3, 406.1, CA 11B-406.5.3

Progress

| | | | |
|-------------------------|-------------|-----------------------|------------|
| Record Number | 471781 | Resolution | None |
| Progress | Not_Started | Priority | Seven |
| Actual Date | | Projected Date | 06/30/2032 |
| Actual Cost | \$0.00 | Contractor | |
| Comments | No Comments | | |
| Assignment | None | New Value | 0 |
| Designated Staff | | | |

New Street - 6th Street to 2nd Street

Sidewalks - Exterior : Sidewalks

East Side

4th Street East Crossing @ 33.943064003286, -118.131906688213

Sidewalks : Vehicular Traffic Slope

Finding

Slope at vehicular traffic is not compliant.

On-Site Finding 6.30 percent

Recommendation

Repave the surface to provide a compliant slope.

Recommendation Up to 5.00 percent

Costing Info (Estimated)

Repave surface \$1,092



Code Reference

Progress

| | | | |
|-------------------------|-------------|-----------------------|------------|
| Record Number | 471878 | Resolution | None |
| Progress | Not_Started | Priority | Seven |
| Actual Date | | Projected Date | 06/30/2032 |
| Actual Cost | \$0.00 | Contractor | |
| Comments | No Comments | New Value | 0 |
| Assignment | None | | |
| Designated Staff | | | |

New Street - 6th Street to 2nd Street

Sidewalks - Exterior : Sidewalks

East Side

5th Street East Crossing @ 33.944090899851, -118.131004124880

Sidewalks : Vehicular Traffic Slope

Finding

Slope at vehicular traffic is not compliant.

On-Site Finding 8.00 percent

Recommendation

Repave the surface to provide a compliant slope.

Recommendation Up to 5.00 percent

Costing Info (Estimated)

Repave surface \$1,092



Code Reference

Progress

| | | | |
|-------------------------|-------------|-----------------------|------------|
| Record Number | 471871 | Resolution | None |
| Progress | Not_Started | Priority | Seven |
| Actual Date | | Projected Date | 06/30/2032 |
| Actual Cost | \$0.00 | Contractor | |
| Comments | No Comments | New Value | 0 |
| Assignment | None | | |
| Designated Staff | | | |

New Street - 6th Street to 2nd Street

Sidewalks - Exterior : Sidewalks , Hazards & Gratings

East Side

Curb Southeast Corner of 4th Street @ 33.942999474161, -118.131953626871

Sidewalks , Hazards & Gratings : Curb is on Path of Travel

Finding

There is a curb on the designated path of travel.

On-Site Finding Not Compliant

Recommendation

Provide a compliant curb ramp.

Recommendation See Recommendation

Costing Info (Estimated)

Install curb ramp \$2,500



Code Reference ADA 402, 303, 406, 403.4, 303.4

Progress

| | | | |
|-------------------------|-------------|-----------------------|------------|
| Record Number | 471868 | Resolution | None |
| Progress | Not_Started | Priority | Seven |
| Actual Date | | Projected Date | 06/30/2032 |
| Actual Cost | \$0.00 | Contractor | |
| Comments | No Comments | New Value | 0 |
| Assignment | None | | |
| Designated Staff | | | |

New Street - 6th Street to 2nd Street

Sidewalks - Exterior : Sidewalks , Vehicular Traffic

East Side

Driveway South of 3rd Street @ 33.941788987712, -118.132972866297

Sidewalks , Vehicular Traffic : Cross Walks and Detectable Warnings

Finding

There are no detectable warnings where the pedestrian route crosses vehicular traffic.

On-Site Finding Not Found

Recommendation

Provide detectable warnings.

Recommendation See Recommendation

Costing Info (Estimated)

Install compliant detectable warnings \$190



Code Reference ADA 705,CA 11B-705.1.2.5,CA 11B-247.1.2.5

Progress

| | | | |
|-------------------------|-------------|-----------------------|------------|
| Record Number | 471881 | Resolution | None |
| Progress | Not_Started | Priority | Seven |
| Actual Date | | Projected Date | 06/30/2032 |
| Actual Cost | \$0.00 | Contractor | |
| Comments | No Comments | New Value | 0 |
| Assignment | None | | |
| Designated Staff | | | |

New Street - 6th Street to 2nd Street

Sidewalks - Exterior : Sidewalks , Vehicular Traffic

East Side

Driveway South of 3rd Street @ 33.941892458274, -118.132893741131

Sidewalks , Vehicular Traffic : Cross Walks and Detectable Warnings

Finding

There are no detectable warnings where the pedestrian route crosses vehicular traffic.

On-Site Finding Not Found

Recommendation

Provide detectable warnings.

Recommendation See Recommendation

Costing Info (Estimated)

Install compliant detectable warnings \$190



Code Reference ADA 705,CA 11B-705.1.2.5,CA 11B-247.1.2.5

Progress

| | | | |
|-------------------------|-------------|-----------------------|------------|
| Record Number | 471874 | Resolution | None |
| Progress | Not_Started | Priority | Seven |
| Actual Date | | Projected Date | 06/30/2032 |
| Actual Cost | \$0.00 | Contractor | |
| Comments | No Comments | New Value | 0 |
| Assignment | None | | |
| Designated Staff | | | |

New Street - 6th Street to 2nd Street

Sidewalks - Exterior : Sidewalks , Vehicular Traffic

East Side

Driveway South of 3rd Street @ 33.942017067817, -118.132805228233

Sidewalks , Vehicular Traffic : Cross Walks and Detectable Warnings

Finding

There are no detectable warnings where the pedestrian route crosses vehicular traffic.

On-Site Finding Not Found

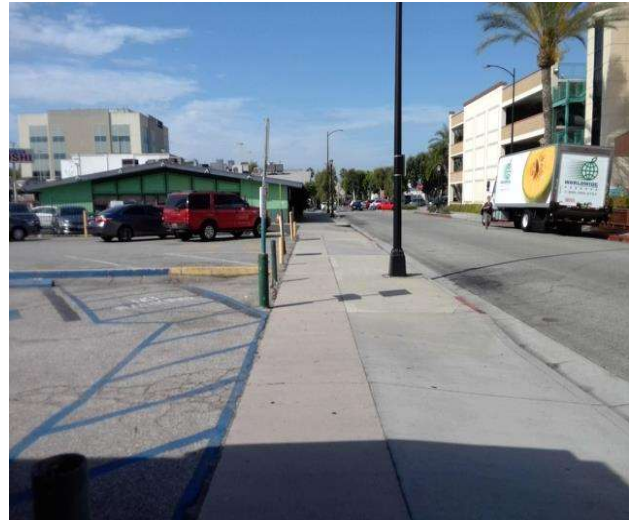
Recommendation

Provide detectable warnings.

Recommendation See Recommendation

Costing Info (Estimated)

Install compliant detectable warnings \$190



Code Reference ADA 705,CA 11B-705.1.2.5,CA 11B-247.1.2.5

Progress

| | | | |
|-------------------------|-------------|-----------------------|------------|
| Record Number | 471882 | Resolution | None |
| Progress | Not_Started | Priority | Seven |
| Actual Date | | Projected Date | 06/30/2032 |
| Actual Cost | \$0.00 | Contractor | |
| Comments | No Comments | New Value | 0 |
| Assignment | None | | |
| Designated Staff | | | |

New Street - 6th Street to 2nd Street

Sidewalks - Exterior : Sidewalks , Vehicular Traffic

East Side

Driveway South of 4th Street @ 33.942415372095, -118.132479339838

Sidewalks , Vehicular Traffic : Cross Walks and Detectable Warnings

Finding

There are no detectable warnings where the pedestrian route crosses vehicular traffic.

On-Site Finding Not Found

Recommendation

Provide detectable warnings.

Recommendation See Recommendation

Costing Info (Estimated)

Install compliant detectable warnings \$190



Code Reference ADA 705,CA 11B-705.1.2.5,CA 11B-247.1.2.5

Progress

| | | | |
|-------------------------|-------------|-----------------------|------------|
| Record Number | 471872 | Resolution | None |
| Progress | Not_Started | Priority | Seven |
| Actual Date | | Projected Date | 06/30/2032 |
| Actual Cost | \$0.00 | Contractor | |
| Comments | No Comments | New Value | 0 |
| Assignment | None | | |
| Designated Staff | | | |

New Street - 6th Street to 2nd Street

Sidewalks - Exterior : Sidewalks

East Side

Driveway South of 4th Street @ 33.942415372095, -118.132479339838

Sidewalks : Vehicular Traffic Cross Slope

Finding

Cross slope at vehicular traffic is not compliant.

On-Site Finding 13.60 percent

Recommendation

Repave the surface to provide a compliant cross slope.

Recommendation Up to 2.08 percent

Costing Info (Estimated)

Repave surface \$1,092



Code Reference ADA 206, 302,CA 11B-403.3

Progress

| | | | |
|-------------------------|-------------|-----------------------|------------|
| Record Number | 471873 | Resolution | None |
| Progress | Not_Started | Priority | Seven |
| Actual Date | | Projected Date | 06/30/2032 |
| Actual Cost | \$0.00 | Contractor | |
| Comments | No Comments | New Value | 0 |
| Assignment | None | | |
| Designated Staff | | | |

New Street - 6th Street to 2nd Street

Sidewalks - Exterior : Sidewalks , Vehicular Traffic

East Side

Driveway South of 4th Street @ 33.942810336788, -118.132136017084

Sidewalks , Vehicular Traffic : Cross Walks and Detectable Warnings

Finding

There are no detectable warnings where the pedestrian route crosses vehicular traffic.

On-Site Finding Not Found

Recommendation

Provide detectable warnings.

Recommendation See Recommendation

Costing Info (Estimated)

Install compliant detectable warnings \$190



Code Reference ADA 705,CA 11B-705.1.2.5,CA 11B-247.1.2.5

Progress

| | | | |
|-------------------------|-------------|-----------------------|------------|
| Record Number | 471876 | Resolution | None |
| Progress | Not_Started | Priority | Seven |
| Actual Date | | Projected Date | 06/30/2032 |
| Actual Cost | \$0.00 | Contractor | |
| Comments | No Comments | New Value | 0 |
| Assignment | None | | |
| Designated Staff | | | |

New Street - 6th Street to 2nd Street

Sidewalks - Exterior : Sidewalks

East Side

Driveway South of 4th Street @ 33.942810336788, -118.132136017084

Sidewalks : Vehicular Traffic Cross Slope

Finding

Cross slope at vehicular traffic is not compliant.

On-Site Finding 13.90 percent

Recommendation

Repave the surface to provide a compliant cross slope.

Recommendation Up to 2.08 percent

Costing Info (Estimated)

Repave surface \$1,092



Code Reference ADA 206, 302,CA 11B-403.3

Progress

| | | | |
|-------------------------|-------------|-----------------------|------------|
| Record Number | 471877 | Resolution | None |
| Progress | Not_Started | Priority | Seven |
| Actual Date | | Projected Date | 06/30/2032 |
| Actual Cost | \$0.00 | Contractor | |
| Comments | No Comments | | |
| Assignment | None | New Value | 0 |
| Designated Staff | | | |

New Street - 6th Street to 2nd Street

Sidewalks - Exterior : Sidewalks , Vehicular Traffic

East Side

Driveway South of 5th Street @ 33.943609161185, -118.131434619427

Sidewalks , Vehicular Traffic : Cross Walks and Detectable Warnings

Finding

There are no detectable warnings where the pedestrian route crosses vehicular traffic.

On-Site Finding Not Found

Recommendation

Provide detectable warnings.

Recommendation See Recommendation

Costing Info (Estimated)

Install compliant detectable warnings \$190



Code Reference ADA 705,CA 11B-705.1.2.5,CA 11B-247.1.2.5

Progress

| | | | |
|-------------------------|-------------|-----------------------|------------|
| Record Number | 471875 | Resolution | None |
| Progress | Not_Started | Priority | Seven |
| Actual Date | | Projected Date | 06/30/2032 |
| Actual Cost | \$0.00 | Contractor | |
| Comments | No Comments | New Value | 0 |
| Assignment | None | | |
| Designated Staff | | | |

New Street - 6th Street to 2nd Street

Sidewalks - Exterior : Sidewalks , Vehicular Traffic

East Side

Driveway South of 6th Street @ 33.944224406621, -118.130896836519

Sidewalks , Vehicular Traffic : Cross Walks and Detectable Warnings

Finding

There are no detectable warnings where the pedestrian route crosses vehicular traffic.

On-Site Finding Not Found

Recommendation

Provide detectable warnings.

Recommendation See Recommendation

Costing Info (Estimated)

Install compliant detectable warnings \$190



Code Reference ADA 705,CA 11B-705.1.2.5,CA 11B-247.1.2.5

Progress

| | | | |
|-------------------------|-------------|-----------------------|------------|
| Record Number | 471879 | Resolution | None |
| Progress | Not_Started | Priority | Seven |
| Actual Date | | Projected Date | 06/30/2032 |
| Actual Cost | \$0.00 | Contractor | |
| Comments | No Comments | New Value | 0 |
| Assignment | None | | |
| Designated Staff | | | |

New Street - 6th Street to 2nd Street

Sidewalks - Exterior : Sidewalks

East Side

Driveway South of 6th Street @ 33.944224406621, -118.130896836519

Sidewalks : Vehicular Traffic Cross Slope

Finding

Cross slope at vehicular traffic is not compliant.

On-Site Finding 13.30 percent

Recommendation

Repave the surface to provide a compliant cross slope.

Recommendation Up to 2.08 percent

Costing Info (Estimated)

Repave surface \$1,092



Code Reference ADA 206, 302, CA 11B-403.3

Progress

| | | | |
|-------------------------|-------------|-----------------------|------------|
| Record Number | 471880 | Resolution | None |
| Progress | Not_Started | Priority | Seven |
| Actual Date | | Projected Date | 06/30/2032 |
| Actual Cost | \$0.00 | Contractor | |
| Comments | No Comments | | |
| Assignment | None | New Value | 0 |
| Designated Staff | | | |

New Street - 6th Street to 2nd Street

Sidewalks - Exterior : Sidewalks

East Side

Sidewalk South of 5th Street @ 33.943274278889, -118.131749778986

Sidewalks : Width

Finding

Sidewalk does not have enough width.

On-Site Finding 42.00 inches for 4.00 feet

Recommendation

Widen the sidewalk to the recommended value.

Recommendation At least 48.00 inches

Costing Info (Estimated)

\$1,260



Code Reference ADA 206, 302,CA 11B-403.5.1

Progress

| | | | |
|-------------------------|-------------|-----------------------|------------|
| Record Number | 471866 | Resolution | None |
| Progress | Not_Started | Priority | Seven |
| Actual Date | | Projected Date | 06/30/2032 |
| Actual Cost | \$0.00 | Contractor | |
| Comments | No Comments | New Value | 0 |
| Assignment | None | | |
| Designated Staff | | | |

New Street - 6th Street to 2nd Street

Sidewalks - Exterior : Sidewalks

East Side

Sidewalk South of 5th Street @ 33.943337695239, -118.131680041552

Sidewalks : Width

Finding

Sidewalk does not have enough width.

On-Site Finding 42.00 inches for 4.00 feet

Recommendation

Widen the sidewalk to the recommended value.

Recommendation At least 48.00 inches

Costing Info (Estimated)

\$1,260



Code Reference ADA 206, 302,CA 11B-403.5.1

Progress

| | | | |
|-------------------------|-------------|-----------------------|------------|
| Record Number | 471867 | Resolution | None |
| Progress | Not_Started | Priority | Seven |
| Actual Date | | Projected Date | 06/30/2032 |
| Actual Cost | \$0.00 | Contractor | |
| Comments | No Comments | | |
| Assignment | None | New Value | 0 |
| Designated Staff | | | |

New Street - 6th Street to 2nd Street

Sidewalks - Exterior : Sidewalks

East Side

Sidewalk South of 5th Street @ 33.943393323577, -118.131633102894

Sidewalks : Width

Finding

Sidewalk does not have enough width.

On-Site Finding 42.00 inches for 4.00 feet

Recommendation

Widen the sidewalk to the recommended value.

Recommendation At least 48.00 inches

Costing Info (Estimated)

\$1,260



Code Reference ADA 206, 302, CA 11B-403.5.1

Progress

| | | | |
|-------------------------|-------------|-----------------------|------------|
| Record Number | 471861 | Resolution | None |
| Progress | Not_Started | Priority | Seven |
| Actual Date | | Projected Date | 06/30/2032 |
| Actual Cost | \$0.00 | Contractor | |
| Comments | No Comments | | |
| Assignment | None | New Value | 0 |
| Designated Staff | | | |

New Street - 6th Street to 2nd Street

Sidewalks - Exterior : Sidewalks

East Side

Sidewalk South of 5th Street @ 33.943472315755, -118.131576776505

Sidewalks : Width

Finding

Sidewalk does not have enough width.

On-Site Finding 42.00 inches for 4.00 feet

Recommendation

Widen the sidewalk to the recommended value.

Recommendation At least 48.00 inches

Costing Info (Estimated)

\$1,260



Code Reference ADA 206, 302, CA 11B-403.5.1

Progress

| | | | |
|-------------------------|-------------|-----------------------|------------|
| Record Number | 471864 | Resolution | None |
| Progress | Not_Started | Priority | Seven |
| Actual Date | | Projected Date | 06/30/2032 |
| Actual Cost | \$0.00 | Contractor | |
| Comments | No Comments | New Value | 0 |
| Assignment | None | | |
| Designated Staff | | | |

New Street - 6th Street to 2nd Street

Sidewalks - Exterior : Sidewalks

East Side

Sidewalk South of 5th Street @ 33.943541294780, -118.131507039070

Sidewalks : Width

Finding

Sidewalk does not have enough width.

On-Site Finding 42.00 inches for 4.00 feet

Recommendation

Widen the sidewalk to the recommended value.

Recommendation At least 48.00 inches

Costing Info (Estimated)

\$1,260



Code Reference ADA 206, 302, CA 11B-403.5.1

Progress

| | | | |
|-------------------------|-------------|-----------------------|------------|
| Record Number | 471860 | Resolution | None |
| Progress | Not_Started | Priority | Seven |
| Actual Date | | Projected Date | 06/30/2032 |
| Actual Cost | \$0.00 | Contractor | |
| Comments | No Comments | New Value | 0 |
| Assignment | None | | |
| Designated Staff | | | |

New Street - 6th Street to 2nd Street

Sidewalks - Exterior : Sidewalks

East Side

Sidewalk South of 5th Street @ 33.943721530032, -118.131344765425

Sidewalks : Width

Finding

Sidewalk does not have enough width.

On-Site Finding 42.00 inches for 4.00 feet

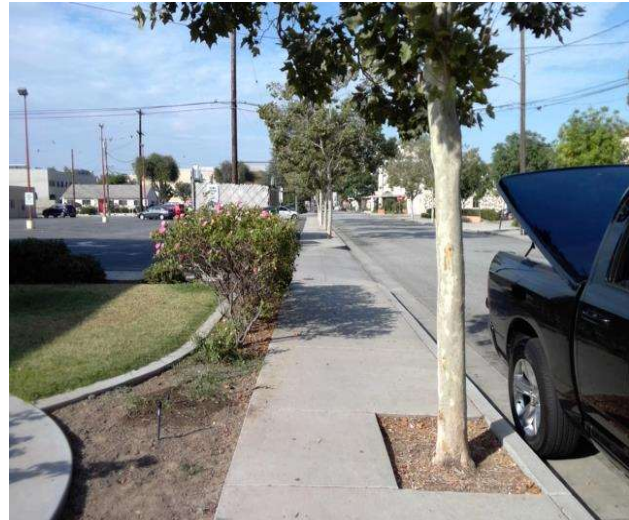
Recommendation

Widen the sidewalk to the recommended value.

Recommendation At least 48.00 inches

Costing Info (Estimated)

\$1,260



Code Reference ADA 206, 302,CA 11B-403.5.1

Progress

| | | | |
|-------------------------|-------------|-----------------------|------------|
| Record Number | 471859 | Resolution | None |
| Progress | Not_Started | Priority | Seven |
| Actual Date | | Projected Date | 06/30/2032 |
| Actual Cost | \$0.00 | Contractor | |
| Comments | No Comments | | |
| Assignment | None | New Value | 0 |
| Designated Staff | | | |

New Street - 6th Street to 2nd Street

Sidewalks - Exterior : Sidewalks

East Side

Sidewalk South of 5th Street @ 33.943783833488, -118.131295144558

Sidewalks : Width

Finding

Sidewalk does not have enough width.

On-Site Finding 42.00 inches for 4.00 feet

Recommendation

Widen the sidewalk to the recommended value.

Recommendation At least 48.00 inches

Costing Info (Estimated)

\$1,260



Code Reference ADA 206, 302,CA 11B-403.5.1

Progress

| | | | |
|-------------------------|-------------|-----------------------|------------|
| Record Number | 471862 | Resolution | None |
| Progress | Not_Started | Priority | Seven |
| Actual Date | | Projected Date | 06/30/2032 |
| Actual Cost | \$0.00 | Contractor | |
| Comments | No Comments | | |
| Assignment | None | New Value | 0 |
| Designated Staff | | | |

New Street - 6th Street to 2nd Street

Sidewalks - Exterior : Sidewalks

East Side

Sidewalk South of 5th Street @ 33.943892864425, -118.131186515093

Sidewalks : Width

Finding

Sidewalk does not have enough width.

On-Site Finding 42.00 inches for 4.00 feet

Recommendation

Widen the sidewalk to the recommended value.

Recommendation At least 48.00 inches

Costing Info (Estimated)

\$1,260



Code Reference ADA 206, 302,CA 11B-403.5.1

Progress

| | | | |
|-------------------------|-------------|-----------------------|------------|
| Record Number | 471857 | Resolution | None |
| Progress | Not_Started | Priority | Seven |
| Actual Date | | Projected Date | 06/30/2032 |
| Actual Cost | \$0.00 | Contractor | |
| Comments | No Comments | | |
| Assignment | None | New Value | 0 |
| Designated Staff | | | |

New Street - 6th Street to 2nd Street

Sidewalks - Exterior : Sidewalks

East Side

Sidewalk South of 5th Street @ 33.943940704486, -118.131142258644

Sidewalks : Width

Finding

Sidewalk does not have enough width.

On-Site Finding 42.00 inches for 4.00 feet

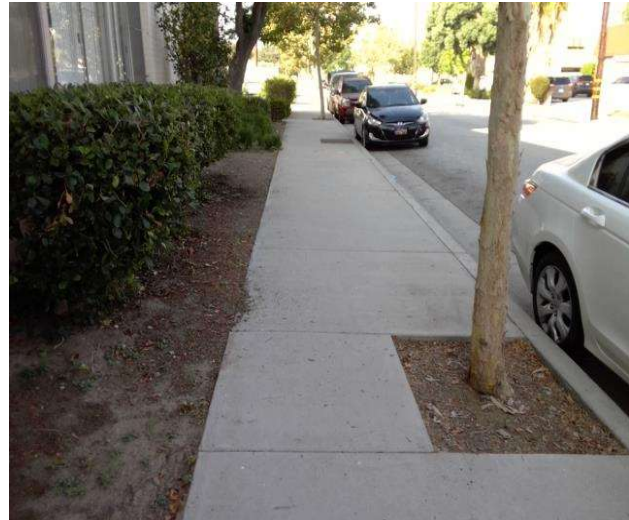
Recommendation

Widen the sidewalk to the recommended value.

Recommendation At least 48.00 inches

Costing Info (Estimated)

\$1,260



Code Reference ADA 206, 302,CA 11B-403.5.1

Progress

| | | | |
|-------------------------|-------------|-----------------------|------------|
| Record Number | 471858 | Resolution | None |
| Progress | Not_Started | Priority | Seven |
| Actual Date | | Projected Date | 06/30/2032 |
| Actual Cost | \$0.00 | Contractor | |
| Comments | No Comments | | |
| Assignment | None | New Value | 0 |
| Designated Staff | | | |

New Street - 6th Street to 2nd Street

Sidewalks - Exterior : Sidewalks , Surface

East Side

Sidewalk South of 5th Street @ 33.944038609643, -118.131075203419

Sidewalks , Surface : Cross Slope

Finding

Sidewalk cross slope is not compliant.

On-Site Finding 4.80 percent for 166.00 feet

Recommendation

Repave the sidewalk surface with the recommended cross slope.

Recommendation Up to 2.08 percent

Costing Info (Estimated)

Repave surface \$1,092



Code Reference ADA 206, 302, CA 11B-403.3

Progress

| | | | |
|-------------------------|-------------|-----------------------|------------|
| Record Number | 471863 | Resolution | None |
| Progress | Not_Started | Priority | Seven |
| Actual Date | | Projected Date | 06/30/2032 |
| Actual Cost | \$0.00 | Contractor | |
| Comments | No Comments | | |
| Assignment | None | New Value | 0 |
| Designated Staff | | | |

New Street - 6th Street to 2nd Street

Sidewalks - Exterior : Sidewalks , Surface

East Side

Sidewalk South of 6th Street @ 33.945073282263, -118.130267858505

Sidewalks , Surface : Cross Slope

Finding

Sidewalk cross slope is not compliant.

On-Site Finding 5.30 percent for 320.00 feet

Recommendation

Repave the sidewalk surface with the recommended cross slope.

Recommendation Up to 2.08 percent

Costing Info (Estimated)

Repave surface \$1,092



Code Reference ADA 206, 302, CA 11B-403.3

Progress

| | | | |
|-------------------------|-------------|-----------------------|------------|
| Record Number | 471865 | Resolution | None |
| Progress | Not_Started | Priority | Seven |
| Actual Date | | Projected Date | 06/30/2032 |
| Actual Cost | \$0.00 | Contractor | |
| Comments | No Comments | | |
| Assignment | None | New Value | 0 |
| Designated Staff | | | |

New Street - 6th Street to 2nd Street

Sidewalks - Exterior : Sidewalks

East Side @ 33.945055481550, -118.130301386118

Sidewalks : 60X60 Turn Area

Finding

There is no 60X60 turn area at every 200 feet.

On-Site Finding Not Found

Recommendation

Provide a 60X60 turn every 200 feet on the sidewalk.

Recommendation See Recommendation

Costing Info (Estimated)

\$2,400



Code Reference ADA 206, 302

Progress

| | | | |
|-------------------------|-------------|-----------------------|------------|
| Record Number | 471856 | Resolution | None |
| Progress | Not_Started | Priority | Seven |
| Actual Date | | Projected Date | 06/30/2032 |
| Actual Cost | \$0.00 | Contractor | |
| Comments | No Comments | | |
| Assignment | None | New Value | 0 |
| Designated Staff | | | |

New Street - 6th Street to 2nd Street

Sidewalks - Exterior : Sidewalks

West Side

4th Street West Crossing @ 33.943137432921, -118.132046163082

Sidewalks : Vehicular Traffic Slope

Finding

Slope at vehicular traffic is not compliant.

On-Site Finding 6.00 percent

Recommendation

Repave the surface to provide a compliant slope.

Recommendation Up to 5.00 percent

Costing Info (Estimated)

Repave surface \$1,092



Code Reference

Progress

| | | | |
|-------------------------|-------------|-----------------------|------------|
| Record Number | 471837 | Resolution | None |
| Progress | Not_Started | Priority | Seven |
| Actual Date | | Projected Date | 06/30/2032 |
| Actual Cost | \$0.00 | Contractor | |
| Comments | No Comments | New Value | 0 |
| Assignment | None | | |
| Designated Staff | | | |

New Street - 6th Street to 2nd Street

Sidewalks - Exterior : Sidewalks

West Side

5th Street West Crossing @ 33.944152090480, -118.131134212017

Sidewalks : Vehicular Traffic Slope

Finding

Slope at vehicular traffic is not compliant.

On-Site Finding 6.60 percent

Recommendation

Repave the surface to provide a compliant slope.

Recommendation Up to 5.00 percent

Costing Info (Estimated)

Repave surface \$1,092



Code Reference

Progress

| | | | |
|-------------------------|-------------|-----------------------|------------|
| Record Number | 471836 | Resolution | None |
| Progress | Not_Started | Priority | Seven |
| Actual Date | | Projected Date | 06/30/2032 |
| Actual Cost | \$0.00 | Contractor | |
| Comments | No Comments | New Value | 0 |
| Assignment | None | | |
| Designated Staff | | | |

New Street - 6th Street to 2nd Street

Sidewalks - Exterior : Sidewalks , Hazards & Gratings

West Side

Curb Southwest Corner of 4th Street @ 33.943082916986, -118.132099807262

Sidewalks , Hazards & Gratings : Curb is on Path of Travel

Finding

There is a curb on the designated path of travel.

On-Site Finding Not Compliant

Recommendation

Provide a compliant curb ramp.

Recommendation See Recommendation

Costing Info (Estimated)

Install curb ramp \$2,500



Code Reference ADA 402, 303, 406, 403.4, 303.4

Progress

| | | | |
|-------------------------|-------------|-----------------------|------------|
| Record Number | 471818 | Resolution | None |
| Progress | Not_Started | Priority | Seven |
| Actual Date | | Projected Date | 06/30/2032 |
| Actual Cost | \$0.00 | Contractor | |
| Comments | No Comments | New Value | 0 |
| Assignment | None | | |
| Designated Staff | | | |

New Street - 6th Street to 2nd Street

Sidewalks - Exterior : Sidewalks , Vehicular Traffic

West Side

Driveway North of 2nd Street @ 33.941773411487, -118.133198171854

Sidewalks , Vehicular Traffic : Cross Walks and Detectable Warnings

Finding

There are no detectable warnings where the pedestrian route crosses vehicular traffic.

On-Site Finding Not Found

Recommendation

Provide detectable warnings.

Recommendation See Recommendation

Costing Info (Estimated)

Install compliant detectable warnings \$190



Code Reference ADA 705,CA 11B-705.1.2.5,CA 11B-247.1.2.5

Progress

| | | | |
|-------------------------|-------------|-----------------------|------------|
| Record Number | 471828 | Resolution | None |
| Progress | Not_Started | Priority | Seven |
| Actual Date | | Projected Date | 06/30/2032 |
| Actual Cost | \$0.00 | Contractor | |
| Comments | No Comments | New Value | 0 |
| Assignment | None | | |
| Designated Staff | | | |

New Street - 6th Street to 2nd Street

Sidewalks - Exterior : Sidewalks

West Side

Driveway North of 2nd Street @ 33.941773411487, -118.133198171854

Sidewalks : Vehicular Traffic Cross Slope

Finding

Cross slope at vehicular traffic is not compliant.

On-Site Finding 4.20 percent

Recommendation

Repave the surface to provide a compliant cross slope.

Recommendation Up to 2.08 percent

Costing Info (Estimated)

Repave surface \$1,092



Code Reference ADA 206, 302, CA 11B-403.3

Progress

| | | | |
|-------------------------|-------------|-----------------------|------------|
| Record Number | 471829 | Resolution | None |
| Progress | Not_Started | Priority | Seven |
| Actual Date | | Projected Date | 06/30/2032 |
| Actual Cost | \$0.00 | Contractor | |
| Comments | No Comments | New Value | 0 |
| Assignment | None | | |
| Designated Staff | | | |

New Street - 6th Street to 2nd Street

Sidewalks - Exterior : Sidewalks , Vehicular Traffic

West Side

Driveway North of 3rd Street @ 33.942553331802, -118.132528960705

Sidewalks , Vehicular Traffic : Cross Walks and Detectable Warnings

Finding

There are no detectable warnings where the pedestrian route crosses vehicular traffic.

On-Site Finding Not Found

Recommendation

Provide detectable warnings.

Recommendation See Recommendation

Costing Info (Estimated)

Install compliant detectable warnings \$190



Code Reference ADA 705,CA 11B-705.1.2.5,CA 11B-247.1.2.5

Progress

| | | | |
|-------------------------|-------------|-----------------------|------------|
| Record Number | 471826 | Resolution | None |
| Progress | Not_Started | Priority | Seven |
| Actual Date | | Projected Date | 06/30/2032 |
| Actual Cost | \$0.00 | Contractor | |
| Comments | No Comments | New Value | 0 |
| Assignment | None | | |
| Designated Staff | | | |

New Street - 6th Street to 2nd Street

Sidewalks - Exterior : Sidewalks

West Side

Driveway North of 3rd Street @ 33.942553331802, -118.132528960705

Sidewalks : Vehicular Traffic Cross Slope

Finding

Cross slope at vehicular traffic is not compliant.

On-Site Finding 12.70 percent

Recommendation

Repave the surface to provide a compliant cross slope.

Recommendation Up to 2.08 percent

Costing Info (Estimated)

Repave surface \$1,092



Code Reference ADA 206, 302,CA 11B-403.3

Progress

| | | | |
|-------------------------|-------------|-----------------------|------------|
| Record Number | 471827 | Resolution | None |
| Progress | Not_Started | Priority | Seven |
| Actual Date | | Projected Date | 06/30/2032 |
| Actual Cost | \$0.00 | Contractor | |
| Comments | No Comments | | |
| Assignment | None | New Value | 0 |
| Designated Staff | | | |

New Street - 6th Street to 2nd Street

Sidewalks - Exterior : Sidewalks , Vehicular Traffic

West Side

Driveway North of 3rd Street @ 33.942694629011, -118.132410943508

Sidewalks , Vehicular Traffic : Cross Walks and Detectable Warnings

Finding

There are no detectable warnings where the pedestrian route crosses vehicular traffic.

On-Site Finding Not Found

Recommendation

Provide detectable warnings.

Recommendation See Recommendation

Costing Info (Estimated)

Install compliant detectable warnings \$190



Code Reference ADA 705,CA 11B-705.1.2.5,CA 11B-247.1.2.5

Progress

| | | | |
|-------------------------|-------------|-----------------------|------------|
| Record Number | 471823 | Resolution | None |
| Progress | Not_Started | Priority | Seven |
| Actual Date | | Projected Date | 06/30/2032 |
| Actual Cost | \$0.00 | Contractor | |
| Comments | No Comments | New Value | 0 |
| Assignment | None | | |
| Designated Staff | | | |

New Street - 6th Street to 2nd Street

Sidewalks - Exterior : Sidewalks

West Side

Driveway North of 3rd Street @ 33.942694629011, -118.132410943508

Sidewalks : Vehicular Traffic Cross Slope

Finding

Cross slope at vehicular traffic is not compliant.

On-Site Finding 13.30 percent

Recommendation

Repave the surface to provide a compliant cross slope.

Recommendation Up to 2.08 percent

Costing Info (Estimated)

Repave surface \$1,092



Code Reference ADA 206, 302,CA 11B-403.3

Progress

| | | | |
|-------------------------|-------------|-----------------------|------------|
| Record Number | 471824 | Resolution | None |
| Progress | Not_Started | Priority | Seven |
| Actual Date | | Projected Date | 06/30/2032 |
| Actual Cost | \$0.00 | Contractor | |
| Comments | No Comments | | |
| Assignment | None | New Value | 0 |
| Designated Staff | | | |

New Street - 6th Street to 2nd Street

Sidewalks - Exterior : Sidewalks

West Side

Driveway North of 4th Street @ 33.943385535612, -118.131831586361

Sidewalks : Vehicular Traffic Cross Slope

Finding

Cross slope at vehicular traffic is not compliant.

On-Site Finding 4.20 percent

Recommendation

Repave the surface to provide a compliant cross slope.

Recommendation Up to 2.08 percent

Costing Info (Estimated)

Repave surface \$1,092



Code Reference ADA 206, 302, CA 11B-403.3

Progress

| | | | |
|-------------------------|-------------|-----------------------|------------|
| Record Number | 471825 | Resolution | None |
| Progress | Not_Started | Priority | Seven |
| Actual Date | | Projected Date | 06/30/2032 |
| Actual Cost | \$0.00 | Contractor | |
| Comments | No Comments | | |
| Assignment | None | New Value | 0 |
| Designated Staff | | | |

New Street - 6th Street to 2nd Street

Sidewalks - Exterior : Sidewalks , Vehicular Traffic

West Side

Driveway North of 4th Street @ 33.943612498876, -118.131630420685

Sidewalks , Vehicular Traffic : Cross Walks and Detectable Warnings

Finding

There are no detectable warnings where the pedestrian route crosses vehicular traffic.

On-Site Finding Not Found

Recommendation

Provide detectable warnings.

Recommendation See Recommendation

Costing Info (Estimated)

Install compliant detectable warnings \$190



Code Reference ADA 705,CA 11B-705.1.2.5,CA 11B-247.1.2.5

Progress

| | | | |
|-------------------------|-------------|-----------------------|------------|
| Record Number | 471834 | Resolution | None |
| Progress | Not_Started | Priority | Seven |
| Actual Date | | Projected Date | 06/30/2032 |
| Actual Cost | \$0.00 | Contractor | |
| Comments | No Comments | New Value | 0 |
| Assignment | None | | |
| Designated Staff | | | |

New Street - 6th Street to 2nd Street

Sidewalks - Exterior : Sidewalks

West Side

Driveway North of 4th Street @ 33.943612498876, -118.131630420685

Sidewalks : Vehicular Traffic Cross Slope

Finding

Cross slope at vehicular traffic is not compliant.

On-Site Finding 6.60 percent

Recommendation

Repave the surface to provide a compliant cross slope.

Recommendation Up to 2.08 percent

Costing Info (Estimated)

Repave surface \$1,092



Code Reference ADA 206, 302, CA 11B-403.3

Progress

| | | | |
|-------------------------|-------------|-----------------------|------------|
| Record Number | 471835 | Resolution | None |
| Progress | Not_Started | Priority | Seven |
| Actual Date | | Projected Date | 06/30/2032 |
| Actual Cost | \$0.00 | Contractor | |
| Comments | No Comments | | |
| Assignment | None | New Value | 0 |
| Designated Staff | | | |

New Street - 6th Street to 2nd Street

Sidewalks - Exterior : Sidewalks , Vehicular Traffic

West Side

Driveway North of 4th Street @ 33.943776045558, -118.131478875875

Sidewalks , Vehicular Traffic : Cross Walks and Detectable Warnings

Finding

There are no detectable warnings where the pedestrian route crosses vehicular traffic.

On-Site Finding Not Found

Recommendation

Provide detectable warnings.

Recommendation See Recommendation

Costing Info (Estimated)

Install compliant detectable warnings \$190



Code Reference ADA 705,CA 11B-705.1.2.5,CA 11B-247.1.2.5

Progress

| | | | |
|-------------------------|-------------|-----------------------|------------|
| Record Number | 471832 | Resolution | None |
| Progress | Not_Started | Priority | Seven |
| Actual Date | | Projected Date | 06/30/2032 |
| Actual Cost | \$0.00 | Contractor | |
| Comments | No Comments | New Value | 0 |
| Assignment | None | | |
| Designated Staff | | | |

New Street - 6th Street to 2nd Street

Sidewalks - Exterior : Sidewalks

West Side

Driveway North of 4th Street @ 33.943776045558, -118.131478875875

Sidewalks : Vehicular Traffic Cross Slope

Finding

Cross slope at vehicular traffic is not compliant.

On-Site Finding 6.50 percent

Recommendation

Repave the surface to provide a compliant cross slope.

Recommendation Up to 2.08 percent

Costing Info (Estimated)

Repave surface \$1,092



Code Reference ADA 206, 302,CA 11B-403.3

Progress

| | | | |
|-------------------------|-------------|-----------------------|------------|
| Record Number | 471833 | Resolution | None |
| Progress | Not_Started | Priority | Seven |
| Actual Date | | Projected Date | 06/30/2032 |
| Actual Cost | \$0.00 | Contractor | |
| Comments | No Comments | | |
| Assignment | None | New Value | 0 |
| Designated Staff | | | |

New Street - 6th Street to 2nd Street

Sidewalks - Exterior : Sidewalks , Vehicular Traffic

West Side

Driveway North of 5th Street @ 33.944571523240, -118.130839169025

Sidewalks , Vehicular Traffic : Cross Walks and Detectable Warnings

Finding

There are no detectable warnings where the pedestrian route crosses vehicular traffic.

On-Site Finding Not Found

Recommendation

Provide detectable warnings.

Recommendation See Recommendation

Costing Info (Estimated)

Install compliant detectable warnings \$190



Code Reference ADA 705,CA 11B-705.1.2.5,CA 11B-247.1.2.5

Progress

| | | | |
|-------------------------|-------------|-----------------------|------------|
| Record Number | 471830 | Resolution | None |
| Progress | Not_Started | Priority | Seven |
| Actual Date | | Projected Date | 06/30/2032 |
| Actual Cost | \$0.00 | Contractor | |
| Comments | No Comments | New Value | 0 |
| Assignment | None | | |
| Designated Staff | | | |

New Street - 6th Street to 2nd Street

Sidewalks - Exterior : Sidewalks

West Side

Driveway North of 5th Street @ 33.944571523240, -118.130839169025

Sidewalks : Vehicular Traffic Cross Slope

Finding

Cross slope at vehicular traffic is not compliant.

On-Site Finding 3.70 percent

Recommendation

Repave the surface to provide a compliant cross slope.

Recommendation Up to 2.08 percent

Costing Info (Estimated)

Repave surface \$1,092



Code Reference ADA 206, 302, CA 11B-403.3

Progress

| | | | |
|-------------------------|-------------|-----------------------|------------|
| Record Number | 471831 | Resolution | None |
| Progress | Not_Started | Priority | Seven |
| Actual Date | | Projected Date | 06/30/2032 |
| Actual Cost | \$0.00 | Contractor | |
| Comments | No Comments | | |
| Assignment | None | New Value | 0 |
| Designated Staff | | | |

New Street - 6th Street to 2nd Street

Sidewalks - Exterior : Sidewalks , Hazards & Gratings

West Side

Guy Wire North of 4th Street @ 33.943536844522, -118.131708204746

Sidewalks , Hazards & Gratings : Overhead Obstruction Height

Finding

Overhead obstruction height is not compliant.

On-Site Finding 65.00 inches

Recommendation

Provide a compliant vertical clearance height.

Recommendation At least 80.00 inches

Costing Info (Estimated)

Unassigned



Code Reference ADA 206, 307.4, CA 11B-307.4

Progress

| | | | |
|-------------------------|-------------|-----------------------|------------|
| Record Number | 471800 | Resolution | None |
| Progress | Not_Started | Priority | Seven |
| Actual Date | | Projected Date | 06/30/2032 |
| Actual Cost | \$0.00 | Contractor | |
| Comments | No Comments | | |
| Assignment | None | New Value | 0 |
| Designated Staff | | | |

New Street - 6th Street to 2nd Street

Sidewalks - Exterior : Sidewalks , Surface

West Side

Sidewalk North of 3rd Street @ 33.942636775064, -118.132459223270

Sidewalks , Surface : Cross Slope

Finding

Sidewalk cross slope is not compliant.

On-Site Finding 3.80 percent for 202.00 feet

Recommendation

Repave the sidewalk surface with the recommended cross slope.

Recommendation Up to 2.08 percent

Costing Info (Estimated)

Repave surface \$1,092



Code Reference ADA 206, 302,CA 11B-403.3

Progress

| | | | |
|-------------------------|-------------|-----------------------|------------|
| Record Number | 471797 | Resolution | None |
| Progress | Not_Started | Priority | Seven |
| Actual Date | | Projected Date | 06/30/2032 |
| Actual Cost | \$0.00 | Contractor | |
| Comments | No Comments | New Value | 0 |
| Assignment | None | | |
| Designated Staff | | | |

New Street - 6th Street to 2nd Street

Sidewalks - Exterior : Sidewalks , Surface

West Side

Sidewalk North of 4th Street @ 33.943308768489, -118.131905347109

Sidewalks , Surface : Cross Slope

Finding

Sidewalk cross slope is not compliant.

On-Site Finding 3.70 percent for 33.00 feet

Recommendation

Repave the sidewalk surface with the recommended cross slope.

Recommendation Up to 2.08 percent

Costing Info (Estimated)

Repave surface \$1,092



Code Reference ADA 206, 302, CA 11B-403.3

Progress

| | | | |
|-------------------------|-------------|-----------------------|------------|
| Record Number | 471798 | Resolution | None |
| Progress | Not_Started | Priority | Seven |
| Actual Date | | Projected Date | 06/30/2032 |
| Actual Cost | \$0.00 | Contractor | |
| Comments | No Comments | | |
| Assignment | None | New Value | 0 |
| Designated Staff | | | |

New Street - 6th Street to 2nd Street

Sidewalks - Exterior : Sidewalks , Surface

West Side

Sidewalk North of 4th Street @ 33.943513480664, -118.131720274687

Sidewalks , Surface : Cross Slope

Finding

Sidewalk cross slope is not compliant.

On-Site Finding 6.00 percent for 35.00 feet

Recommendation

Repave the sidewalk surface with the recommended cross slope.

Recommendation Up to 2.08 percent

Costing Info (Estimated)

Repave surface \$1,092



Code Reference ADA 206, 302,CA 11B-403.3

Progress

| | | | |
|-------------------------|-------------|-----------------------|------------|
| Record Number | 471796 | Resolution | None |
| Progress | Not_Started | Priority | Seven |
| Actual Date | | Projected Date | 06/30/2032 |
| Actual Cost | \$0.00 | Contractor | |
| Comments | No Comments | | |
| Assignment | None | New Value | 0 |
| Designated Staff | | | |

New Street - 6th Street to 2nd Street

Sidewalks - Exterior : Sidewalks , Surface

West Side

Sidewalk North of 4th Street @ 33.943827223367, -118.131438642740

Sidewalks , Surface : Cross Slope

Finding

Sidewalk cross slope is not compliant.

On-Site Finding 8.80 percent for 110.00 feet

Recommendation

Repave the sidewalk surface with the recommended cross slope.

Recommendation Up to 2.08 percent

Costing Info (Estimated)

Repave surface \$1,092



Code Reference ADA 206, 302,CA 11B-403.3

Progress

| | | | |
|-------------------------|-------------|-----------------------|------------|
| Record Number | 471793 | Resolution | None |
| Progress | Not_Started | Priority | Seven |
| Actual Date | | Projected Date | 06/30/2032 |
| Actual Cost | \$0.00 | Contractor | |
| Comments | No Comments | New Value | 0 |
| Assignment | None | | |
| Designated Staff | | | |

New Street - 6th Street to 2nd Street

Sidewalks - Exterior : Sidewalks , Surface

West Side

Sidewalk North of 5th Street @ 33.944238869841, -118.131077885628

Sidewalks , Surface : Cross Slope

Finding

Sidewalk cross slope is not compliant.

On-Site Finding 4.70 percent for 91.00 feet

Recommendation

Repave the sidewalk surface with the recommended cross slope.

Recommendation Up to 2.08 percent

Costing Info (Estimated)

Repave surface \$1,092



Code Reference ADA 206, 302,CA 11B-403.3

Progress

| | | | |
|-------------------------|-------------|-----------------------|------------|
| Record Number | 471799 | Resolution | None |
| Progress | Not_Started | Priority | Seven |
| Actual Date | | Projected Date | 06/30/2032 |
| Actual Cost | \$0.00 | Contractor | |
| Comments | No Comments | | |
| Assignment | None | New Value | 0 |
| Designated Staff | | | |

New Street - 6th Street to 2nd Street

Sidewalks - Exterior : Sidewalks , Surface

West Side

Sidewalk North of 5th Street @ 33.944622700571, -118.130812346935

Sidewalks , Surface : Cross Slope

Finding

Sidewalk cross slope is not compliant.

On-Site Finding 4.60 percent for 243.00 feet

Recommendation

Repave the sidewalk surface with the recommended cross slope.

Recommendation Up to 2.08 percent

Costing Info (Estimated)

Repave surface \$1,092



Code Reference ADA 206, 302,CA 11B-403.3

Progress

| | | | |
|-------------------------|-------------|-----------------------|------------|
| Record Number | 471794 | Resolution | None |
| Progress | Not_Started | Priority | Seven |
| Actual Date | | Projected Date | 06/30/2032 |
| Actual Cost | \$0.00 | Contractor | |
| Comments | No Comments | | |
| Assignment | None | New Value | 0 |
| Designated Staff | | | |

New Street - 6th Street to 2nd Street

Sidewalks - Exterior : Sidewalks

West Side

Sidewalk North of 5th Street @ 33.944622700571, -118.130812346935

Sidewalks : Opening

Finding

Ground surface has an opening that is not compliant.

On-Site Finding Not Compliant

Recommendation

Make sure that the surface opening does not allow passage of a sphere more than 1/2 inch in diameter.

Recommendation See Recommendation

Costing Info (Estimated)

Unassigned



Code Reference ADA 302

Progress

| | | | |
|-------------------------|-------------|-----------------------|------------|
| Record Number | 471795 | Resolution | None |
| Progress | Not_Started | Priority | Seven |
| Actual Date | | Projected Date | 06/30/2032 |
| Actual Cost | \$0.00 | Contractor | |
| Comments | No Comments | | |
| Assignment | None | New Value | 0 |
| Designated Staff | | | |

New Street - 6th Street to 2nd Street

Sidewalks - Exterior : Sidewalks , Hazards & Gratings

West Side

Sign North of 3rd Street @ 33.942405358882, -118.132667094469

Sidewalks , Hazards & Gratings : Sidewalk Width at Obstruction

Finding

Sidewalk width at the obstruction is not compliant.

On-Site Finding 40.00 inches

Recommendation

Sidewalk width at the obstruction shall have the recommended value.

Recommendation At least 48.00 inches

Costing Info (Estimated)

\$1,260



Code Reference ADA 206, 302, 403.5.1,CA 11B-403.5

Progress

| | | | |
|-------------------------|-------------|-----------------------|------------|
| Record Number | 471808 | Resolution | None |
| Progress | Not_Started | Priority | Seven |
| Actual Date | | Projected Date | 06/30/2032 |
| Actual Cost | \$0.00 | Contractor | |
| Comments | No Comments | | |
| Assignment | None | New Value | 0 |
| Designated Staff | | | |

New Street - 6th Street to 2nd Street

Sidewalks - Exterior : Sidewalks , Hazards & Gratings

West Side

Sign North of 3rd Street @ 33.942675715225, -118.132435083389

Sidewalks , Hazards & Gratings : Sidewalk Width at Obstruction

Finding

Sidewalk width at the obstruction is not compliant.

On-Site Finding 38.00 inches

Recommendation

Sidewalk width at the obstruction shall have the recommended value.

Recommendation At least 48.00 inches

Costing Info (Estimated)

\$1,260



Code Reference ADA 206, 302, 403.5.1, CA 11B-403.5

Progress

| | | | |
|-------------------------|-------------|-----------------------|------------|
| Record Number | 471814 | Resolution | None |
| Progress | Not_Started | Priority | Seven |
| Actual Date | | Projected Date | 06/30/2032 |
| Actual Cost | \$0.00 | Contractor | |
| Comments | No Comments | New Value | 0 |
| Assignment | None | | |
| Designated Staff | | | |

New Street - 6th Street to 2nd Street

Sidewalks - Exterior : Sidewalks , Hazards & Gratings

West Side

Sign North of 3rd Street @ 33.942958309004, -118.132185637951

Sidewalks , Hazards & Gratings : Sidewalk Width at Obstruction

Finding

Sidewalk width at the obstruction is not compliant.

On-Site Finding 38.00 inches

Recommendation

Sidewalk width at the obstruction shall have the recommended value.

Recommendation At least 48.00 inches

Costing Info (Estimated)

\$1,260



Code Reference ADA 206, 302, 403.5.1, CA 11B-403.5

Progress

| | | | |
|-------------------------|-------------|-----------------------|------------|
| Record Number | 471806 | Resolution | None |
| Progress | Not_Started | Priority | Seven |
| Actual Date | | Projected Date | 06/30/2032 |
| Actual Cost | \$0.00 | Contractor | |
| Comments | No Comments | | |
| Assignment | None | New Value | 0 |
| Designated Staff | | | |

New Street - 6th Street to 2nd Street

Sidewalks - Exterior : Sidewalks , Hazards & Gratings

West Side

Utility Pole North of 4th Street @ 33.943569108887, -118.131654560566

Sidewalks , Hazards & Gratings : Sidewalk Width at Obstruction

Finding

Sidewalk width at the obstruction is not compliant.

On-Site Finding 45.50 inches

Recommendation

Sidewalk width at the obstruction shall have the recommended value.

Recommendation At least 48.00 inches

Costing Info (Estimated)

\$1,260



Code Reference ADA 206, 302, 403.5.1,CA 11B-403.5

Progress

| | | | |
|-------------------------|-------------|-----------------------|------------|
| Record Number | 471803 | Resolution | None |
| Progress | Not_Started | Priority | Seven |
| Actual Date | | Projected Date | 06/30/2032 |
| Actual Cost | \$0.00 | Contractor | |
| Comments | No Comments | | |
| Assignment | None | New Value | 0 |
| Designated Staff | | | |

New Street - 6th Street to 2nd Street



New Street - 6th Street to 2nd Street

6th Street to 2nd Street
Downey, CA 90242

Date of Inspection
7/19/2017

***Estimated Facility Total: \$101,678**

*Estimated facility total is for estimating purposes only and does not represent total construction, repair totals or design fees.

Prepared By

Disability Access Consultants

(800) 743-7067

Prepared Using

