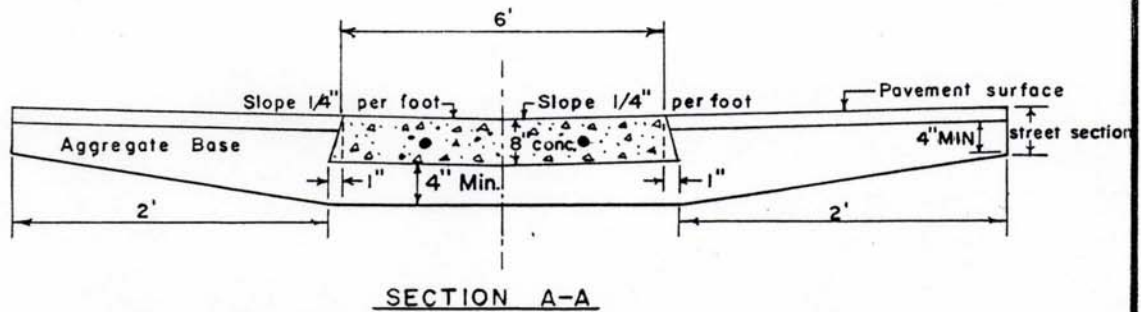
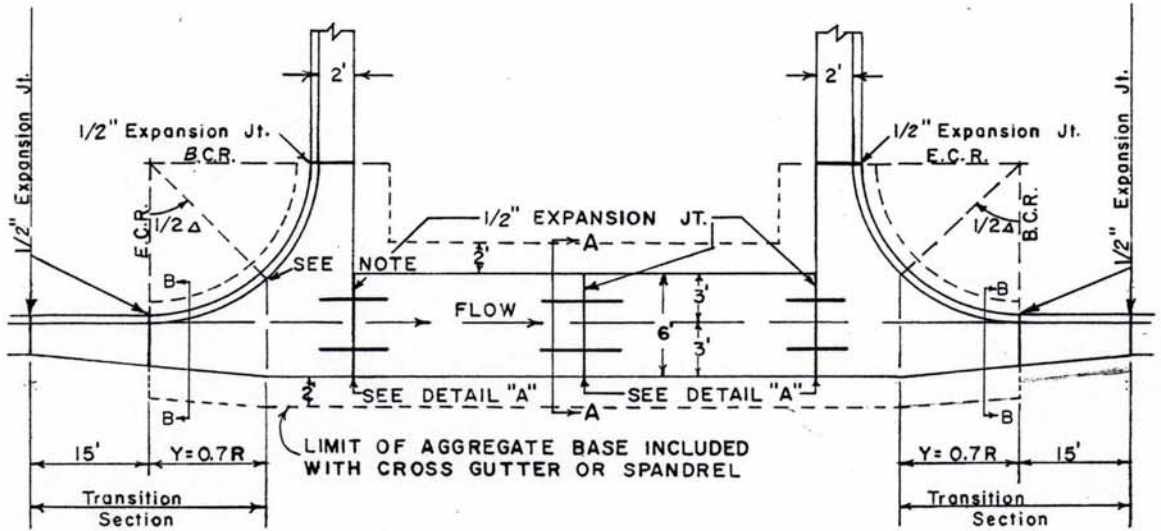
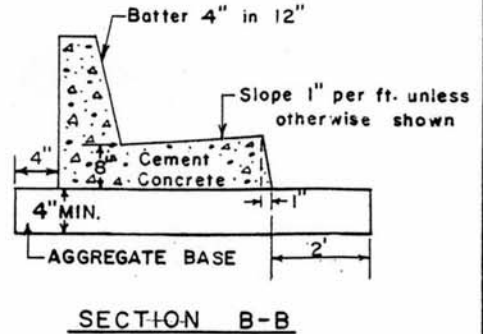
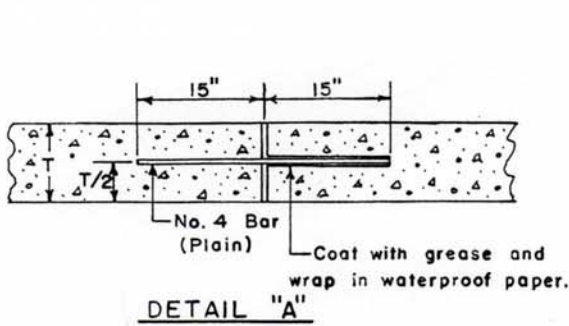


# STANDARD CROSS GUTTER



NOTE : THE FLOWLINE AT THE MIDPOINT OF THE CURB RETURN AT THE UPSTREAM END OF THE CROSS GUTTER SHALL BE RAISED TWO INCHES TO FACILITATE FLOW.

APPROVED  
BY  
DATE  
LIMIT OF AGR. BASE

5-3-68  
7-7-69

8/11/69

CITY OF DOWNEY - DEPT. OF PUBLIC WORKS - ENGINEERING DIVISION			
PROJECT :	Des. By:	Vert Scale :	No Scale
STANDARD CROSS GUTTER	Dwn. By: DWM	9-61	Horiz. Scale: No Scale
TYPE B-2	Ck. By: [Signature]	12-61	Sheet of Sheets
	App. By: [Signature]	1-62	DWG. NO. 2
	City Engineer	Date	