



City of Downey

112,901 Population

where we are



12 miles from Downtown L.A.



18 miles from Ports



17 miles from Disneyland



Direct access to four major freeways 5, 105, 605, 710



17 miles from LAX International Airport

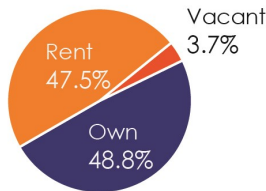


10 miles from Pacific Coastline

how we live



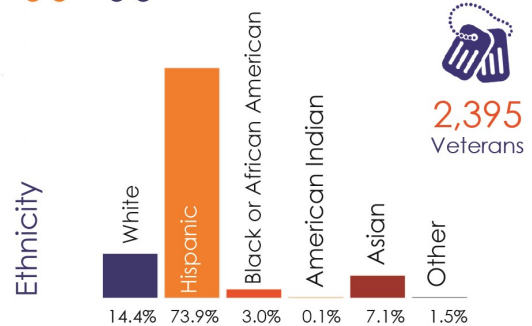
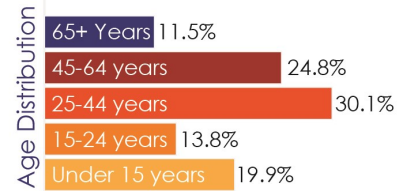
59% Single Family Detached
31% Multi-Family 5 Units+
5% Multi-Family 2 to 4 Units
4% Single Family Attached
1% Mobile Home



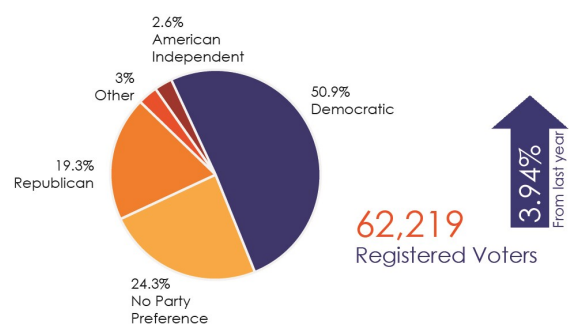
34,473 Housing Units by Housing Type

who we are

Median Age 35.6 years old



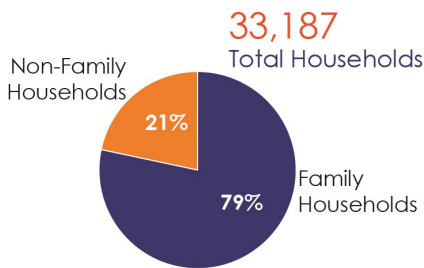
2,395 Veterans



62,219 Registered Voters

3.94% From last year

Type of Households

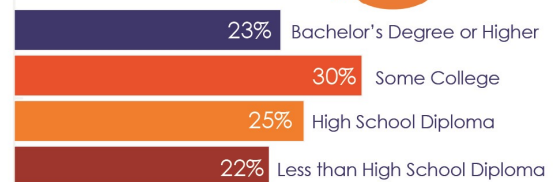


33,187 Total Households

\$595,000 Median Home Sales Price



Education



Population over 25 Years of Age: 74,888

3.38 Average Household Size



\$1,376 month Median Monthly Rent

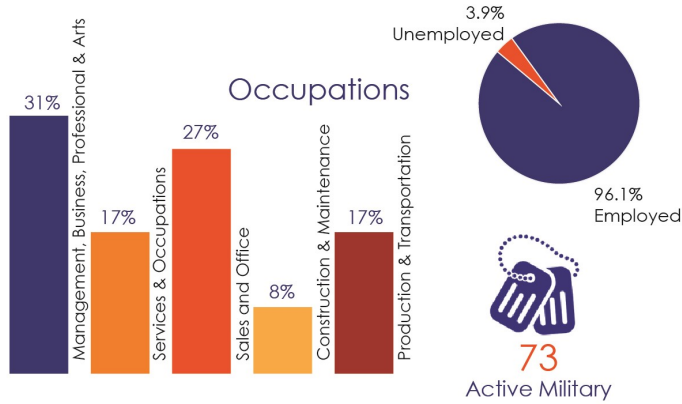


\$2,375 month Median Monthly Mortgage

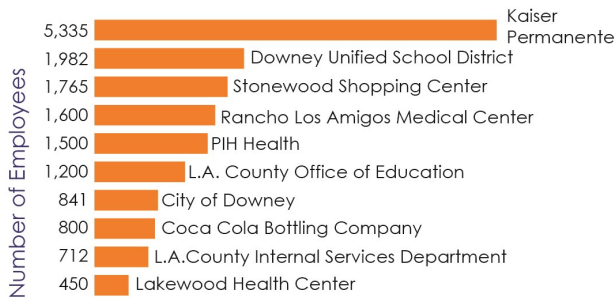


2020-2021 City Profile

how we work



Largest Employers

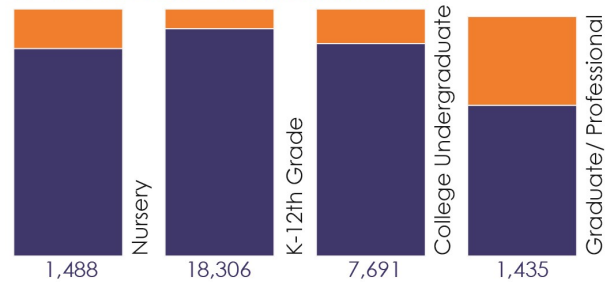


how we learn

- 13 Public Elementary Schools
- 3 Public High Schools
- 4 Public Middle Schools
- 4 WASC - Accredited Private Elementary/ Secondary Schools

Population **28,920**

3+ Yrs consecutive enrollment in school

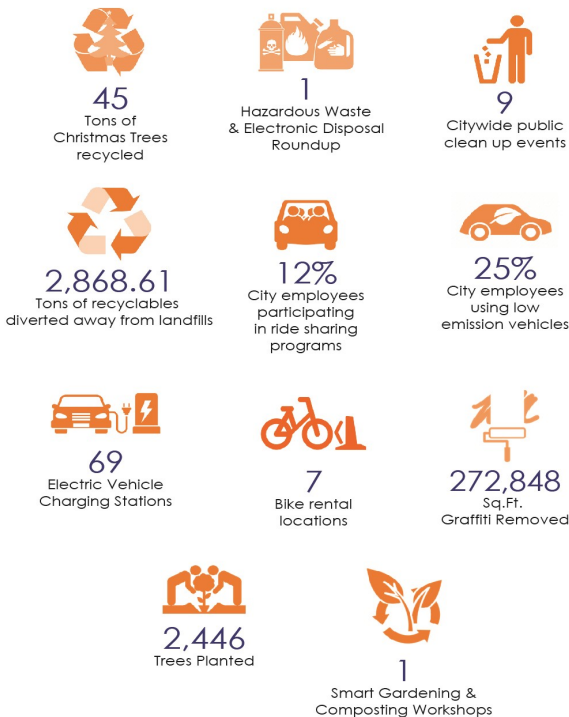


Source: Downey Unified/ California Department of Education

what we offer

- 12 Parks (115 Acres)
- 1 Skateboard Park
- 10 Playgrounds
- 2 Bocce Ball Courts
- 1 Public Swimming Pool open during the summer
- 4 Summer Camps
- 2 Golf Courses
- 4 Walking Trails
- 1 Off-leash dog park
- 11 Tennis Courts
- 4 Soccer Fields
- 3 Futsal Courts
- 2 Handball Courts
- 1 Challenger Obstacle Course
- 4 Fitness Stations
- 19 Picnic Shelters
- 4 Outdoor Sand Volleyball Courts
- 6 Outdoor Basketball Courts
- 3 Activity Rooms
- 2 Public Ponds
- 1 Gymnasium
- 10 Ball Diamonds
- 1 Indoor Basketball & Volleyball Courts
- 2 Access to bike route trail heads
- 3 Middle & 9 Elementary school ASPIRE (after school educational program sites)
- 3,275 Businesses
- 1 Regional mall
- 5 Major shopping centers
- 3 Hospitals
- 1 Cemetery
- 1 Fire Explorer Program
- 57 Community Emergency Response Team (CERT) Volunteers
- 4 CERT Trainings (English/ Spanish / High School)
- 1 Citizens' Academy
- 1 Citizens on Patrol/ Volunteer Program
- 222 Neighborhood Watch Groups
- 1 Police Explorer Program
- 1 Business Watch Program
- 2 Police Department Mental Health Teams

how we care



City Library



Civic Theatre



Space Science Museum & Learning Center



Community & Senior Center Facility (provides activities, meals & social services)



Weekly Farmer's Market promoting local organic farms and goods



95,819 Miles Traveled with 61,678 boardings on the DowneyLINK Fixed Route Transit System



14,728 Dial-A-Ride trips for seniors and persons with disabilities