

Accessibility Survey



City of Downey Pangborn Avenue - Firestone Boulevard To Gotham Street

Firestone Boulevard To Gotham Street
Downey, CA 90241

Date of Inspection
5/3/2017

Prepared By

Disability Access Consultants

(800) 743-7067

Pangborn Avenue - Firestone Boulevard To Gotham Street

Sidewalks - Exterior : Sidewalks , Change in Level

East Side

Change In Level South Of Ardine Street @ 33.931381209383, -118.113163411617

Sidewalks , Change in Level : Change in Level Non Beveled

Finding

There is a change in elevation greater than recommended value.

On-Site Finding 0.62 inches

Recommendation

Ensure that the change in elevation is within the recommended value.

Recommendation Up to 0.25 inches

Costing Info (Estimated)

Remove tripping hazards \$198



Code Reference ADA 206, 302

Progress

Record Number	418541	Resolution	None
Progress	Not_Started	Priority	Two
Actual Date		Projected Date	06/30/2021
Actual Cost	\$0.00	Contractor	
Comments	No Comments	New Value	0
Assignment	None		
Designated Staff			

Pangborn Avenue - Firestone Boulevard To Gotham Street

Sidewalks - Exterior : Sidewalks , Change in Level

East Side

Change In Level South Of Ardine Street @ 33.931801817778, -118.112881779671

Sidewalks , Change in Level : Change in Level Non Beveled

Finding

There is a change in elevation greater than recommended value.

On-Site Finding 0.50 inches

Recommendation

Ensure that the change in elevation is within the recommended value.

Recommendation Up to 0.25 inches

Costing Info (Estimated)

Remove tripping hazards \$198



Code Reference ADA 206, 302

Progress

Record Number	418543	Resolution	None
Progress	Not_Started	Priority	Two
Actual Date		Projected Date	06/30/2021
Actual Cost	\$0.00	Contractor	
Comments	No Comments	New Value	0
Assignment	None		
Designated Staff			

Pangborn Avenue - Firestone Boulevard To Gotham Street

Sidewalks - Exterior : Sidewalks , Change in Level

East Side

Change In Level South Of Cecilia Street @ 33.933713445630, -118.111586272717

Sidewalks , Change in Level : Change in Level Non Beveled

Finding

There is a change in elevation greater than recommended value.

On-Site Finding 0.75 inches

Recommendation

Ensure that the change in elevation is within the recommended value.

Recommendation Up to 0.25 inches

Costing Info (Estimated)

Remove tripping hazards \$198



Code Reference ADA 206, 302

Progress

Record Number	418550	Resolution	None
Progress	Not_Started	Priority	Two
Actual Date		Projected Date	06/30/2021
Actual Cost	\$0.00	Contractor	
Comments	No Comments	New Value	0
Assignment	None		
Designated Staff			

Pangborn Avenue - Firestone Boulevard To Gotham Street

Sidewalks - Exterior : Sidewalks , Change in Level

East Side

Change In Level South Of Fostoria Street @ 33.932295863081, -118.112600147724

Sidewalks , Change in Level : Change in Level Non Beveled

Finding

There is a change in elevation greater than recommended value.

On-Site Finding 0.87 inches

Recommendation

Ensure that the change in elevation is within the recommended value.

Recommendation Up to 0.25 inches

Costing Info (Estimated)

Remove tripping hazards \$198



Code Reference ADA 206, 302

Progress

Record Number	418536	Resolution	None
Progress	Not_Started	Priority	Two
Actual Date		Projected Date	06/30/2021
Actual Cost	\$0.00	Contractor	
Comments	No Comments	New Value	0
Assignment	None		
Designated Staff			

Pangborn Avenue - Firestone Boulevard To Gotham Street

Sidewalks - Exterior : Sidewalks , Change in Level

East Side

Change In Level South Of Fostoria Street @ 33.932335920683, -118.112573325634

Sidewalks , Change in Level : Change in Level Non Beveled

Finding

There is a change in elevation greater than recommended value.

On-Site Finding 1.00 inches

Recommendation

Ensure that the change in elevation is within the recommended value.

Recommendation Up to 0.25 inches

Costing Info (Estimated)

Remove tripping hazards \$198



Code Reference ADA 206, 302

Progress

Record Number	418542	Resolution	None
Progress	Not_Started	Priority	Two
Actual Date		Projected Date	06/30/2021
Actual Cost	\$0.00	Contractor	
Comments	No Comments	New Value	0
Assignment	None		
Designated Staff			

Pangborn Avenue - Firestone Boulevard To Gotham Street

Sidewalks - Exterior : Sidewalks , Change in Level

East Side

Change In Level South Of Fostoria Street @ 33.932491766, -118.112479448318

Sidewalks , Change in Level : Change in Level Non Beveled

Finding

There is a change in elevation greater than recommended value.

On-Site Finding 0.75 inches

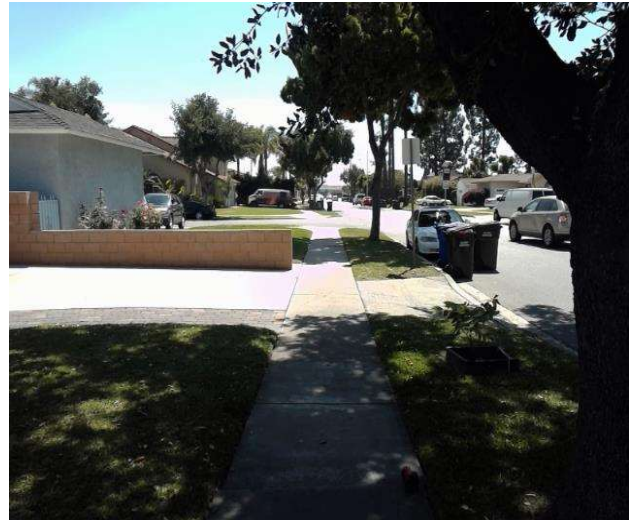
Recommendation

Ensure that the change in elevation is within the recommended value.

Recommendation Up to 0.25 inches

Costing Info (Estimated)

Remove tripping hazards \$198



Code Reference ADA 206, 302

Progress

Record Number	418544	Resolution	None
Progress	Not_Started	Priority	Two
Actual Date		Projected Date	06/30/2021
Actual Cost	\$0.00	Contractor	
Comments	No Comments	New Value	0
Assignment	None		
Designated Staff			

Pangborn Avenue - Firestone Boulevard To Gotham Street

Sidewalks - Exterior : Sidewalks , Change in Level

East Side

Change In Level South Of Fostoria Street @ 33.932518405074, -118.112457990646

Sidewalks , Change in Level : Change in Level Non Beveled

Finding

There is a change in elevation greater than recommended value.

On-Site Finding 0.50 inches

Recommendation

Ensure that the change in elevation is within the recommended value.

Recommendation Up to 0.25 inches

Costing Info (Estimated)

Remove tripping hazards \$198



Code Reference ADA 206, 302

Progress

Record Number	418539	Resolution	None
Progress	Not_Started	Priority	Two
Actual Date		Projected Date	06/30/2021
Actual Cost	\$0.00	Contractor	
Comments	No Comments	New Value	0
Assignment	None		
Designated Staff			

Pangborn Avenue - Firestone Boulevard To Gotham Street

Sidewalks - Exterior : Sidewalks , Change in Level

East Side

Change In Level South Of Fostoria Street @ 33.932527306742, -118.112444579601

Sidewalks , Change in Level : Change in Level Non Beveled

Finding

There is a change in elevation greater than recommended value.

On-Site Finding 0.50 inches

Recommendation

Ensure that the change in elevation is within the recommended value.

Recommendation Up to 0.25 inches

Costing Info (Estimated)

Remove tripping hazards \$198



Code Reference ADA 206, 302

Progress

Record Number	418548	Resolution	None
Progress	Not_Started	Priority	Two
Actual Date		Projected Date	06/30/2021
Actual Cost	\$0.00	Contractor	
Comments	No Comments	New Value	0
Assignment	None		
Designated Staff			

Pangborn Avenue - Firestone Boulevard To Gotham Street

Sidewalks - Exterior : Sidewalks , Change in Level

East Side

Change In Level South Of Quinn Street @ 33.935825310559, -118.110062777996

Sidewalks , Change in Level : Change in Level Non Beveled

Finding

There is a change in elevation greater than recommended value.

On-Site Finding 0.50 inches

Recommendation

Ensure that the change in elevation is within the recommended value.

Recommendation Up to 0.25 inches

Costing Info (Estimated)

Remove tripping hazards \$198



Code Reference ADA 206, 302

Progress

Record Number	418540	Resolution	None
Progress	Not_Started	Priority	Two
Actual Date		Projected Date	06/30/2021
Actual Cost	\$0.00	Contractor	
Comments	No Comments	New Value	0
Assignment	None		
Designated Staff			

Pangborn Avenue - Firestone Boulevard To Gotham Street

Sidewalks - Exterior : Sidewalks , Change in Level

East Side

Change In Level South Of Quinn Street @ 33.936497357749, -118.109585344791

Sidewalks , Change in Level : Change in Level Non Beveled

Finding

There is a change in elevation greater than recommended value.

On-Site Finding 0.62 inches

Recommendation

Ensure that the change in elevation is within the recommended value.

Recommendation Up to 0.25 inches

Costing Info (Estimated)

Remove tripping hazards \$198



Code Reference ADA 206, 302

Progress

Record Number	418547	Resolution	None
Progress	Not_Started	Priority	Two
Actual Date		Projected Date	06/30/2021
Actual Cost	\$0.00	Contractor	
Comments	No Comments	New Value	0
Assignment	None		
Designated Staff			

Pangborn Avenue - Firestone Boulevard To Gotham Street

Sidewalks - Exterior : Sidewalks , Change in Level

West Side

Change In Level North Of Buell Street @ 33.935520439721, -118.110491931438

Sidewalks , Change in Level : Change in Level Non Beveled

Finding

There is a change in elevation greater than recommended value.

On-Site Finding 1.12 inches

Recommendation

Ensure that the change in elevation is within the recommended value.

Recommendation Up to 0.25 inches

Costing Info (Estimated)

Remove tripping hazards \$198



Code Reference ADA 206, 302

Progress

Record Number	418516	Resolution	None
Progress	Not_Started	Priority	Two
Actual Date		Projected Date	06/30/2021
Actual Cost	\$0.00	Contractor	
Comments	No Comments	New Value	0
Assignment	None		
Designated Staff			

Pangborn Avenue - Firestone Boulevard To Gotham Street

Sidewalks - Exterior : Sidewalks , Change in Level

West Side

Change In Level North Of Cecilia Street @ 33.934372157277, -118.111288547516

Sidewalks , Change in Level : Change in Level Non Beveled

Finding

There is a change in elevation greater than recommended value.

On-Site Finding 1.00 inches

Recommendation

Ensure that the change in elevation is within the recommended value.

Recommendation Up to 0.25 inches

Costing Info (Estimated)

Remove tripping hazards \$198



Code Reference ADA 206, 302

Progress

Record Number	418513	Resolution	None
Progress	Not_Started	Priority	Two
Actual Date		Projected Date	06/30/2021
Actual Cost	\$0.00	Contractor	
Comments	No Comments	New Value	0
Assignment	None		
Designated Staff			

Pangborn Avenue - Firestone Boulevard To Gotham Street

Sidewalks - Exterior : Sidewalks , Change in Level

West Side

Change In Level North Of Pellet Street @ 33.932320342729, -118.112785220146

Sidewalks , Change in Level : Change in Level Non Beveled

Finding

There is a change in elevation greater than recommended value.

On-Site Finding 0.50 inches

Recommendation

Ensure that the change in elevation is within the recommended value.

Recommendation Up to 0.25 inches

Costing Info (Estimated)

Remove tripping hazards \$198



Code Reference ADA 206, 302

Progress

Record Number	418525	Resolution	None
Progress	Not_Started	Priority	Two
Actual Date		Projected Date	06/30/2021
Actual Cost	\$0.00	Contractor	
Comments	No Comments	New Value	0
Assignment	None		
Designated Staff			

Pangborn Avenue - Firestone Boulevard To Gotham Street

Sidewalks - Exterior : Sidewalks , Change in Level

West Side

Change In Level North Of Pellet Street @ 33.932725368606, -118.112484812737

Sidewalks , Change in Level : Change in Level Non Beveled

Finding

There is a change in elevation greater than recommended value.

On-Site Finding 1.00 inches

Recommendation

Ensure that the change in elevation is within the recommended value.

Recommendation Up to 0.25 inches

Costing Info (Estimated)

Remove tripping hazards \$198



Code Reference ADA 206, 302

Progress

Record Number	418518	Resolution	None
Progress	Not_Started	Priority	Two
Actual Date		Projected Date	06/30/2021
Actual Cost	\$0.00	Contractor	
Comments	No Comments	New Value	0
Assignment	None		
Designated Staff			

Pangborn Avenue - Firestone Boulevard To Gotham Street

Sidewalks - Exterior : Sidewalks , Change in Level

West Side

Change In Level North Of Pellet Street @ 33.932772102237, -118.112466037273

Sidewalks , Change in Level : Change in Level Non Beveled

Finding

There is a change in elevation greater than recommended value.

On-Site Finding 1.00 inches

Recommendation

Ensure that the change in elevation is within the recommended value.

Recommendation Up to 0.25 inches

Costing Info (Estimated)

Remove tripping hazards \$198



Code Reference ADA 206, 302

Progress

Record Number	418515	Resolution	None
Progress	Not_Started	Priority	Two
Actual Date		Projected Date	06/30/2021
Actual Cost	\$0.00	Contractor	
Comments	No Comments	New Value	0
Assignment	None		
Designated Staff			

Pangborn Avenue - Firestone Boulevard To Gotham Street

Sidewalks - Exterior : Sidewalks , Change in Level

West Side

Change In Level North Of Pellet Street @ 33.933364059344, -118.112042248249

Sidewalks , Change in Level : Change in Level Non Beveled

Finding

There is a change in elevation greater than recommended value.

On-Site Finding 1.25 inches

Recommendation

Ensure that the change in elevation is within the recommended value.

Recommendation Up to 0.25 inches

Costing Info (Estimated)

Remove tripping hazards \$198



Code Reference ADA 206, 302

Progress

Record Number	418520	Resolution	None
Progress	Not_Started	Priority	Two
Actual Date		Projected Date	06/30/2020
Actual Cost	\$0.00	Contractor	
Comments	No Comments	New Value	0
Assignment	None		
Designated Staff			

Pangborn Avenue - Firestone Boulevard To Gotham Street

Sidewalks - Exterior : Sidewalks , Change in Level

West Side

Change In Level North Of Pellet Street @ 33.934022773693, -118.111562132835

Sidewalks , Change in Level : Change in Level Non Beveled

Finding

There is a change in elevation greater than recommended value.

On-Site Finding 0.62 inches

Recommendation

Ensure that the change in elevation is within the recommended value.

Recommendation Up to 0.25 inches

Costing Info (Estimated)

Remove tripping hazards \$198



Code Reference ADA 206, 302

Progress

Record Number	418522	Resolution	None
Progress	Not_Started	Priority	Two
Actual Date		Projected Date	06/30/2021
Actual Cost	\$0.00	Contractor	
Comments	No Comments	New Value	0
Assignment	None		
Designated Staff			

Pangborn Avenue - Firestone Boulevard To Gotham Street

Sidewalks - Exterior : Sidewalks , Change in Level

West Side

Change In Level North Of Pellet Street @ 33.934045027467, -118.111546039581

Sidewalks , Change in Level : Change in Level Non Beveled

Finding

There is a change in elevation greater than recommended value.

On-Site Finding 0.50 inches

Recommendation

Ensure that the change in elevation is within the recommended value.

Recommendation Up to 0.25 inches

Costing Info (Estimated)

Remove tripping hazards \$198



Code Reference ADA 206, 302

Progress

Record Number	418511	Resolution	None
Progress	Not_Started	Priority	Two
Actual Date		Projected Date	06/30/2021
Actual Cost	\$0.00	Contractor	
Comments	No Comments		
Assignment	None	New Value	0
Designated Staff			

Pangborn Avenue - Firestone Boulevard To Gotham Street

Curb Ramps - Exterior : Curb Ramp

Northeast Corner Of Cecilia Street @ 33.934134042506, - 118.111272454262

Bottom Landing

Curb Ramp : Bottom Landing Slope

Finding

The bottom landing of the curb ramp is on the street, and the slope of the bottom landing is not compliant.

On-Site Finding 6.80 percent

Recommendation

Ensure the bottom landing slope is compliant and provides a smooth transition.

Recommendation Up to 5.00 percent

Costing Info (Estimated)

Repave landing \$1,260



Code Reference ADA 406, 406.2, CA 11B-406.5.8

Progress

Record Number	418559	Resolution	None
Progress	Not_Started	Priority	Seven
Actual Date		Projected Date	06/30/2032
Actual Cost	\$0.00	Contractor	
Comments	No Comments		
Assignment	None	New Value	0
Designated Staff			

Pangborn Avenue - Firestone Boulevard To Gotham Street

Curb Ramps - Exterior : Curb Ramp

Northwest Corner Of Buell Street @ 33.935240046599, - 118.110698461533

Bottom Landing

Curb Ramp : Bottom Landing Slope

Finding

The bottom landing of the curb ramp is on the street, and the slope of the bottom landing is not compliant.

On-Site Finding 5.40 percent

Recommendation

Ensure the bottom landing slope is compliant and provides a smooth transition.

Recommendation Up to 5.00 percent

Costing Info (Estimated)

Repave landing \$1,260



Code Reference ADA 406, 406.2, CA 11B-406.5.8

Progress

Record Number	418560	Resolution	None
Progress	Not_Started	Priority	Seven
Actual Date		Projected Date	06/30/2032
Actual Cost	\$0.00	Contractor	
Comments	No Comments		
Assignment	None	New Value	0
Designated Staff			

Pangborn Avenue - Firestone Boulevard To Gotham Street

Curb Ramps - Exterior : Curb Ramp , Landings and Transitions

Northwest Corner Of Cecilia Street @ 33.934211930588, - 118.111436069012

Top Landing

Curb Ramp , Landings and Transitions : Top Landing Slope

Finding

The slope at the top landing is greater than allowed.

On-Site Finding 2.70 percent

Recommendation

Provide a top landing surface that does not exceed the maximum slope and cross slope. Provide a sufficient maneuvering clearance that does not accumulate water.

Recommendation Up to 2.08 percent

Costing Info (Estimated)

Provide compliant landing \$1,260



Code Reference ADA 402, 406.4, 403.3, 406.1, CA 11B-406.5.3

Progress

Record Number	418562	Resolution	None
Progress	Not_Started	Priority	Seven
Actual Date		Projected Date	06/30/2032
Actual Cost	\$0.00	Contractor	
Comments	No Comments		
Assignment	None	New Value	0
Designated Staff			

Pangborn Avenue - Firestone Boulevard To Gotham Street

Curb Ramps - Exterior : Curb Ramp

Southeast Corner Of Ardine Street @ 33.932115603641, - 118.112712800503

Curb Ramp : No Detectable Warnings

Finding

The curb ramp does not provide a detectable warning surface which includes truncated domes.

On-Site Finding Not Found

Recommendation

Provide compliant detectable warnings to surface.

Recommendation See Recommendation

Costing Info (Estimated)

Provide detectable warning to surface \$248



Code Reference CA 11B-406.5.12

Progress

Record Number	418488	Resolution	None
Progress	Not_Started	Priority	Seven
Actual Date		Projected Date	06/30/2032
Actual Cost	\$0.00	Contractor	
Comments	No Comments	New Value	0
Assignment	None		
Designated Staff			

Pangborn Avenue - Firestone Boulevard To Gotham Street

Curb Ramps - Exterior : Curb Ramp

Southeast Corner Of Ardine Street @ 33.932115603641, - 118.112712800503

Bottom Landing

Curb Ramp : Bottom Landing Slope

Finding

The bottom landing of the curb ramp is on the street, and the slope of the bottom landing is not compliant.

On-Site Finding 14.40 percent

Recommendation

Ensure the bottom landing slope is compliant and provides a smooth transition.

Recommendation Up to 5.00 percent

Costing Info (Estimated)

Repave landing \$1,260



Code Reference ADA 406, 406.2, CA 11B-406.5.8

Progress

Record Number	418489	Resolution	None
Progress	Not_Started	Priority	Seven
Actual Date		Projected Date	06/30/2032
Actual Cost	\$0.00	Contractor	
Comments	No Comments		
Assignment	None	New Value	0
Designated Staff			

Pangborn Avenue - Firestone Boulevard To Gotham Street

Curb Ramps - Exterior : Curb Ramp , Landings And Transitions

Southeast Corner Of Ardine Street @ 33.932115603641, - 118.112712800503

Bottom Landing

Finding

The transition from the bottom of the curb ramp to the walk, gutter, or street is abrupt.

On-Site Finding 0.62 inches

Recommendation

Patch the transition area at the bottom of the curb ramp so that the transition is flush and free of abrupt changes.

Recommendation Up to 0.50 inches

Costing Info (Estimated)

Patch lip at curb ramp \$255

Curb Ramp , Landings And Transitions : Bottom Landing Change in Level



Code Reference ADA 302, 303, 406.2, 303.1

Progress

Record Number	418490	Resolution	None
Progress	Not_Started	Priority	Seven
Actual Date		Projected Date	06/30/2032
Actual Cost	\$0.00	Contractor	
Comments	No Comments		
Assignment	None	New Value	0
Designated Staff			

Pangborn Avenue - Firestone Boulevard To Gotham Street

Curb Ramps - Exterior : Curb Ramp , Landings And Transitions

Southeast Corner Of Ardine Street @ 33.932115603641, - 118.112712800503

Bottom Landing

Curb Ramp , Landings And Transitions : Bottom Landing Change in Level due to Overlayment

Finding

The overlayment causes a noncompliant change in level.

On-Site Finding 1.00 inches

Recommendation

Ensure the change in elevation is within the recommended height.

Recommendation Up to 0.50 inches

Costing Info (Estimated)

Provide smooth surface \$150



Code Reference ADA 303.2, 303.3,CA 11B-303.3,CA 11B-303.2

Progress

Record Number	418491	Resolution	None
Progress	Not_Started	Priority	Seven
Actual Date		Projected Date	06/30/2032
Actual Cost	\$0.00	Contractor	
Comments	No Comments		
Assignment	None	New Value	0
Designated Staff			

Pangborn Avenue - Firestone Boulevard To Gotham Street

Curb Ramps - Exterior : Curb Ramp , Landings and Transitions

Southeast Corner Of Ardine Street @ 33.932115603641, - 118.112712800503

Top Landing

Curb Ramp , Landings and Transitions : Top Landing Slope

Finding

The slope at the top landing is greater than allowed.

On-Site Finding 5.40 percent

Recommendation

Provide a top landing surface that does not exceed the maximum slope and cross slope. Provide a sufficient maneuvering clearance that does not accumulate water.

Recommendation Up to 2.08 percent

Costing Info (Estimated)

Provide compliant landing \$1,260



Code Reference ADA 402, 406.4, 403.3, 406.1, CA 11B-406.5.3

Progress

Record Number	418492	Resolution	None
Progress	Not_Started	Priority	Seven
Actual Date		Projected Date	06/30/2032
Actual Cost	\$0.00	Contractor	
Comments	No Comments		
Assignment	None	New Value	0
Designated Staff			

Pangborn Avenue - Firestone Boulevard To Gotham Street

Curb Ramps - Exterior : Curb Ramp

Southeast Corner Of Cecilia Street @ 33.934027224448, - 118.111352920532

Bottom Landing

Curb Ramp : Bottom Landing Slope

Finding

The bottom landing of the curb ramp is on the street, and the slope of the bottom landing is not compliant.

On-Site Finding 11.50 percent

Recommendation

Ensure the bottom landing slope is compliant and provides a smooth transition.

Recommendation Up to 5.00 percent

Costing Info (Estimated)

Repave landing \$1,260



Code Reference ADA 406, 406.2, CA 11B-406.5.8

Progress

Record Number	418563	Resolution	None
Progress	Not_Started	Priority	Seven
Actual Date		Projected Date	06/30/2032
Actual Cost	\$0.00	Contractor	
Comments	No Comments	New Value	0
Assignment	None		
Designated Staff			

Pangborn Avenue - Firestone Boulevard To Gotham Street

Curb Ramps - Exterior : Curb Ramp

Southwest Corner Of Buell Street @ 33.935108751090, - 118.110789656639

Curb Ramp : Appurtenances

Finding

Utilities, gratings or other appurtenances are located on the curb ramp.

On-Site Finding Not Compliant

Recommendation

Provide a compliant curb ramp free of appurtenances.

Recommendation See Recommendation

Costing Info (Estimated)

Install curb ramp \$1,440



Code Reference ADA 303.3,CA 11B-303.3

Progress

Record Number	418557	Resolution	None
Progress	Not_Started	Priority	Seven
Actual Date		Projected Date	06/30/2032
Actual Cost	\$0.00	Contractor	
Comments	No Comments		
Assignment	None	New Value	0
Designated Staff			

Pangborn Avenue - Firestone Boulevard To Gotham Street

Curb Ramps - Exterior : Curb Ramp

Southwest Corner Of Buell Street @ 33.935108751090, - 118.110789656639

Bottom Landing

Curb Ramp : Bottom Landing Slope

Finding

The bottom landing of the curb ramp is on the street, and the slope of the bottom landing is not compliant.

On-Site Finding 5.80 percent

Recommendation

Ensure the bottom landing slope is compliant and provides a smooth transition.

Recommendation Up to 5.00 percent

Costing Info (Estimated)

Repave landing \$1,260



Code Reference ADA 406, 406.2, CA 11B-406.5.8

Progress

Record Number	418558	Resolution	None
Progress	Not_Started	Priority	Seven
Actual Date		Projected Date	06/30/2032
Actual Cost	\$0.00	Contractor	
Comments	No Comments	New Value	0
Assignment	None		
Designated Staff			

Pangborn Avenue - Firestone Boulevard To Gotham Street

Sidewalks - Exterior : Sidewalks , Vehicular Traffic

East Side

Driveway South Of Ardine Street @ 33.931347827676, -118.113198280334

Sidewalks , Vehicular Traffic : Cross Walks and Detectable Warnings

Finding

There are no detectable warnings where the pedestrian route crosses vehicular traffic.

On-Site Finding Not Found

Recommendation

Provide detectable warnings.

Recommendation See Recommendation

Costing Info (Estimated)

Install compliant detectable warnings \$190



Code Reference ADA 705,CA 11B-705.1.2.5,CA 11B-247.1.2.5

Progress

Record Number	418553	Resolution	None
Progress	Not_Started	Priority	Seven
Actual Date		Projected Date	06/30/2032
Actual Cost	\$0.00	Contractor	
Comments	No Comments	New Value	0
Assignment	None		
Designated Staff			

Pangborn Avenue - Firestone Boulevard To Gotham Street

Sidewalks - Exterior : Sidewalks , Vehicular Traffic

East Side

Driveway South Of Ardine Street @ 33.931381209383, -118.113163411617

Sidewalks , Vehicular Traffic : Cross Walks and Detectable Warnings

Finding

There are no detectable warnings where the pedestrian route crosses vehicular traffic.

On-Site Finding Not Found

Recommendation

Provide detectable warnings.

Recommendation See Recommendation

Costing Info (Estimated)

Install compliant detectable warnings \$190



Code Reference ADA 705,CA 11B-705.1.2.5,CA 11B-247.1.2.5

Progress

Record Number	418554	Resolution	None
Progress	Not_Started	Priority	Seven
Actual Date		Projected Date	06/30/2032
Actual Cost	\$0.00	Contractor	
Comments	No Comments	New Value	0
Assignment	None		
Designated Staff			

Pangborn Avenue - Firestone Boulevard To Gotham Street

Sidewalks - Exterior : Sidewalks , Vehicular Traffic

East Side

Driveway South Of Ardine Street @ 33.931621557292, -118.112999796867

Sidewalks , Vehicular Traffic : Cross Walks and Detectable Warnings

Finding

There are no detectable warnings where the pedestrian route crosses vehicular traffic.

On-Site Finding Not Found

Recommendation

Provide detectable warnings.

Recommendation See Recommendation

Costing Info (Estimated)

Install compliant detectable warnings \$190



Code Reference ADA 705,CA 11B-705.1.2.5,CA 11B-247.1.2.5

Progress

Record Number	418555	Resolution	None
Progress	Not_Started	Priority	Seven
Actual Date		Projected Date	06/30/2032
Actual Cost	\$0.00	Contractor	
Comments	No Comments	New Value	0
Assignment	None		
Designated Staff			

Pangborn Avenue - Firestone Boulevard To Gotham Street

Sidewalks - Exterior : Sidewalks

East Side

Driveway South Of Ardine Street @ 33.931621557292, -118.112999796867

Sidewalks : Vehicular Traffic Cross Slope

Finding

Cross slope at vehicular traffic is not compliant.

On-Site Finding 7.10 percent

Recommendation

Repave the surface to provide a compliant cross slope.

Recommendation Up to 2.08 percent

Costing Info (Estimated)

Repave surface \$1,092



Code Reference ADA 206, 302, CA 11B-403.3

Progress

Record Number	418556	Resolution	None
Progress	Not_Started	Priority	Seven
Actual Date		Projected Date	06/30/2032
Actual Cost	\$0.00	Contractor	
Comments	No Comments	New Value	0
Assignment	None		
Designated Staff			

Pangborn Avenue - Firestone Boulevard To Gotham Street

Sidewalks - Exterior : Sidewalks , Hazards & Gratings

East Side

Northeast Corner Of Ardine Street @ 33.932233551219, -118.112643063068

Sidewalks , Hazards & Gratings : Curb is on Path of Travel

Finding

There is a curb on the designated path of travel.

On-Site Finding Not Compliant

Recommendation

Provide a compliant curb ramp.

Recommendation See Recommendation

Costing Info (Estimated)

Install curb ramp \$2,500



Code Reference ADA 402, 303, 406, 403.4, 303.4

Progress

Record Number	418552	Resolution	None
Progress	Not_Started	Priority	Seven
Actual Date		Projected Date	06/30/2032
Actual Cost	\$0.00	Contractor	
Comments	No Comments	New Value	0
Assignment	None		
Designated Staff			

Pangborn Avenue - Firestone Boulevard To Gotham Street

Sidewalks - Exterior : Sidewalks , Hazards & Gratings

East Side

Northeast Corner Of Fostoria Street @ 33.932858893198, -118.112189769745

Sidewalks , Hazards & Gratings : Curb is on Path of Travel

Finding

There is a curb on the designated path of travel.

On-Site Finding Not Compliant

Recommendation

Provide a compliant curb ramp.

Recommendation See Recommendation

Costing Info (Estimated)

Install curb ramp \$2,500



Code Reference ADA 402, 303, 406, 403.4, 303.4

Progress

Record Number	418537	Resolution	None
Progress	Not_Started	Priority	Seven
Actual Date		Projected Date	06/30/2032
Actual Cost	\$0.00	Contractor	
Comments	No Comments	New Value	0
Assignment	None		
Designated Staff			

Pangborn Avenue - Firestone Boulevard To Gotham Street

Sidewalks - Exterior : Sidewalks , Hazards & Gratings

East Side

Northeast Corner Of La Villa Street @ 33.933497582934, -118.111733794212

Sidewalks , Hazards & Gratings : Curb is on Path of Travel

Finding

There is a curb on the designated path of travel.

On-Site Finding Not Compliant

Recommendation

Provide a compliant curb ramp.

Recommendation See Recommendation

Costing Info (Estimated)

Install curb ramp \$2,500



Code Reference ADA 402, 303, 406, 403.4, 303.4

Progress

Record Number	418545	Resolution	None
Progress	Not_Started	Priority	Seven
Actual Date		Projected Date	06/30/2032
Actual Cost	\$0.00	Contractor	
Comments	No Comments	New Value	0
Assignment	None		
Designated Staff			

Pangborn Avenue - Firestone Boulevard To Gotham Street

Sidewalks - Exterior : Sidewalks , Hazards & Gratings

East Side

Northeast Corner Of Quinn Street @ 33.937084838364, -118.109153509140

Sidewalks , Hazards & Gratings : Curb is on Path of Travel

Finding

There is a curb on the designated path of travel.

On-Site Finding Not Compliant

Recommendation

Provide a compliant curb ramp.

Recommendation See Recommendation

Costing Info (Estimated)

Install curb ramp \$2,500



Code Reference ADA 402, 303, 406, 403.4, 303.4

Progress

Record Number	418549	Resolution	None
Progress	Not_Started	Priority	Seven
Actual Date		Projected Date	06/30/2032
Actual Cost	\$0.00	Contractor	
Comments	No Comments	New Value	0
Assignment	None		
Designated Staff			

Pangborn Avenue - Firestone Boulevard To Gotham Street

Sidewalks - Exterior : Sidewalks , Surface

East Side

Sidewalk South Of Ardine Street @ 33.932082222221, -118.112734258175

Sidewalks , Surface : Cross Slope

Finding

Sidewalk cross slope is not compliant.

On-Site Finding 3.80 percent for 20.00 feet

Recommendation

Repave the sidewalk surface with the recommended cross slope.

Recommendation Up to 2.08 percent

Costing Info (Estimated)

Repave surface \$1,092



Code Reference ADA 206, 302,CA 11B-403.3

Progress

Record Number	418532	Resolution	None
Progress	Not_Started	Priority	Seven
Actual Date		Projected Date	06/30/2032
Actual Cost	\$0.00	Contractor	
Comments	No Comments		
Assignment	None	New Value	0
Designated Staff			

Pangborn Avenue - Firestone Boulevard To Gotham Street

Sidewalks - Exterior : Sidewalks , Surface

East Side

Sidewalk South Of Mueller Street @ 33.935291229540, -118.110483884811

Sidewalks , Surface : Cross Slope

Finding

Sidewalk cross slope is not compliant.

On-Site Finding 4.90 percent for 10.00 feet

Recommendation

Repave the sidewalk surface with the recommended cross slope.

Recommendation Up to 2.08 percent

Costing Info (Estimated)

Repave surface \$1,092



Code Reference ADA 206, 302, CA 11B-403.3

Progress

Record Number	418533	Resolution	None
Progress	Not_Started	Priority	Seven
Actual Date		Projected Date	06/30/2032
Actual Cost	\$0.00	Contractor	
Comments	No Comments	New Value	0
Assignment	None		
Designated Staff			

Pangborn Avenue - Firestone Boulevard To Gotham Street

Sidewalks - Exterior : Sidewalks , Surface

East Side

Sidewalk South Of Quinn Street @ 33.935627255905, -118.110204935074

Sidewalks , Surface : Cross Slope

Finding

Sidewalk cross slope is not compliant.

On-Site Finding 5.00 percent for 35.00 feet

Recommendation

Repave the sidewalk surface with the recommended cross slope.

Recommendation Up to 2.08 percent

Costing Info (Estimated)

Repave surface \$1,092



Code Reference ADA 206, 302,CA 11B-403.3

Progress

Record Number	418534	Resolution	None
Progress	Not_Started	Priority	Seven
Actual Date		Projected Date	06/30/2032
Actual Cost	\$0.00	Contractor	
Comments	No Comments	New Value	0
Assignment	None		
Designated Staff			

Pangborn Avenue - Firestone Boulevard To Gotham Street

Sidewalks - Exterior : Sidewalks , Surface

East Side

Sidewalk South Of Quinn Street @ 33.936528512126, -118.109558522701

Sidewalks , Surface : Cross Slope

Finding

Sidewalk cross slope is not compliant.

On-Site Finding 4.80 percent for 35.00 feet

Recommendation

Repave the sidewalk surface with the recommended cross slope.

Recommendation Up to 2.08 percent

Costing Info (Estimated)

Repave surface \$1,092



Code Reference ADA 206, 302,CA 11B-403.3

Progress

Record Number	418531	Resolution	None
Progress	Not_Started	Priority	Seven
Actual Date		Projected Date	06/30/2032
Actual Cost	\$0.00	Contractor	
Comments	No Comments		
Assignment	None	New Value	0
Designated Staff			

Pangborn Avenue - Firestone Boulevard To Gotham Street

Sidewalks - Exterior : Sidewalks , Hazards & Gratings

East Side

Southeast Corner Of Fostoria Street @ 33.932747622719, -118.112278282642

Sidewalks , Hazards & Gratings : Curb is on Path of Travel

Finding

There is a curb on the designated path of travel.

On-Site Finding Not Compliant

Recommendation

Provide a compliant curb ramp.

Recommendation See Recommendation

Costing Info (Estimated)

Install curb ramp \$2,500



Code Reference ADA 402, 303, 406, 403.4, 303.4

Progress

Record Number	418538	Resolution	None
Progress	Not_Started	Priority	Seven
Actual Date		Projected Date	06/30/2032
Actual Cost	\$0.00	Contractor	
Comments	No Comments	New Value	0
Assignment	None		
Designated Staff			

Pangborn Avenue - Firestone Boulevard To Gotham Street

Sidewalks - Exterior : Sidewalks , Hazards & Gratings

East Side

Southeast Corner Of La Villa Street @ 33.933381862501, -118.111816942692

Sidewalks , Hazards & Gratings : Curb is on Path of Travel

Finding

There is a curb on the designated path of travel.

On-Site Finding Not Compliant

Recommendation

Provide a compliant curb ramp.

Recommendation See Recommendation

Costing Info (Estimated)

Install curb ramp \$2,500



Code Reference ADA 402, 303, 406, 403.4, 303.4

Progress

Record Number	418551	Resolution	None
Progress	Not_Started	Priority	Seven
Actual Date		Projected Date	06/30/2032
Actual Cost	\$0.00	Contractor	
Comments	No Comments	New Value	0
Assignment	None		
Designated Staff			

Pangborn Avenue - Firestone Boulevard To Gotham Street

Sidewalks - Exterior : Sidewalks , Hazards & Gratings

East Side

Southeast Corner Of Quinn Street @ 33.936971348107, -118.109233975410

Sidewalks , Hazards & Gratings : Curb is on Path of Travel

Finding

There is a curb on the designated path of travel.

On-Site Finding Not Compliant

Recommendation

Provide a compliant curb ramp.

Recommendation See Recommendation

Costing Info (Estimated)

Install curb ramp \$2,500



Code Reference ADA 402, 303, 406, 403.4, 303.4

Progress

Record Number	418546	Resolution	None
Progress	Not_Started	Priority	Seven
Actual Date		Projected Date	06/30/2032
Actual Cost	\$0.00	Contractor	
Comments	No Comments	New Value	0
Assignment	None		
Designated Staff			

Pangborn Avenue - Firestone Boulevard To Gotham Street

Sidewalks - Exterior : Sidewalks , Hazards & Gratings

East Side

Tree South Of Quinn Street @ 33.936038942029, -118.109928667545

Sidewalks , Hazards & Gratings : Overhead Obstruction Height

Finding

Overhead obstruction height is not compliant.

On-Site Finding 59.00 inches

Recommendation

Provide a compliant vertical clearance height.

Recommendation At least 80.00 inches

Costing Info (Estimated)

Unassigned



Code Reference ADA 206, 307.4, CA 11B-307.4

Progress

Record Number	418535	Resolution	None
Progress	Not_Started	Priority	Seven
Actual Date		Projected Date	06/30/2032
Actual Cost	\$0.00	Contractor	
Comments	No Comments		
Assignment	None	New Value	0
Designated Staff			

Pangborn Avenue - Firestone Boulevard To Gotham Street

Sidewalks - Exterior : Sidewalks , Hazards & Gratings

West Side

Bush North Of Cecilia Street @ 33.934608046019, -118.111141026020

Sidewalks , Hazards & Gratings : Sidewalk Width at Obstruction

Finding

Sidewalk width at the obstruction is not compliant.

On-Site Finding 34.00 inches

Recommendation

Sidewalk width at the obstruction shall have the recommended value.

Recommendation At least 48.00 inches

Costing Info (Estimated)

\$1,260



Code Reference ADA 206, 302, 403.5.1, CA 11B-403.5

Progress

Record Number	418524	Resolution	None
Progress	Not_Started	Priority	Seven
Actual Date		Projected Date	06/30/2032
Actual Cost	\$0.00	Contractor	
Comments	No Comments	New Value	0
Assignment	None		
Designated Staff			

Pangborn Avenue - Firestone Boulevard To Gotham Street

Sidewalks - Exterior : Sidewalks , Hazards & Gratings

West Side

Bush North Of Cecilia Street @ 33.934739342300, -118.111047148705

Sidewalks , Hazards & Gratings : Sidewalk Width at Obstruction

Finding

Sidewalk width at the obstruction is not compliant.

On-Site Finding 36.00 inches

Recommendation

Sidewalk width at the obstruction shall have the recommended value.

Recommendation At least 48.00 inches

Costing Info (Estimated)

\$1,260



Code Reference ADA 206, 302, 403.5.1, CA 11B-403.5

Progress

Record Number	418512	Resolution	None
Progress	Not_Started	Priority	Seven
Actual Date		Projected Date	06/30/2032
Actual Cost	\$0.00	Contractor	
Comments	No Comments		
Assignment	None	New Value	0
Designated Staff			

Pangborn Avenue - Firestone Boulevard To Gotham Street

Sidewalks - Exterior : Sidewalks , Hazards & Gratings

West Side

Bush North Of Cecilia Street @ 33.934861736956, -118.110972046852

Sidewalks , Hazards & Gratings : Sidewalk Width at Obstruction

Finding

Sidewalk width at the obstruction is not compliant.

On-Site Finding 41.00 inches

Recommendation

Sidewalk width at the obstruction shall have the recommended value.

Recommendation At least 48.00 inches

Costing Info (Estimated)

\$1,260



Code Reference ADA 206, 302, 403.5.1, CA 11B-403.5

Progress

Record Number	418517	Resolution	None
Progress	Not_Started	Priority	Seven
Actual Date		Projected Date	06/30/2032
Actual Cost	\$0.00	Contractor	
Comments	No Comments		
Assignment	None	New Value	0
Designated Staff			

Pangborn Avenue - Firestone Boulevard To Gotham Street

Sidewalks - Exterior : Sidewalks , Hazards & Gratings

West Side

Bush North Of Firestone Boulevard @ 33.931414591078, -118.113340437412

Sidewalks , Hazards & Gratings : Sidewalk Width at Obstruction

Finding

Sidewalk width at the obstruction is not compliant.

On-Site Finding 28.00 inches

Recommendation

Sidewalk width at the obstruction shall have the recommended value.

Recommendation At least 48.00 inches

Costing Info (Estimated)

\$1,260



Code Reference ADA 206, 302, 403.5.1, CA 11B-403.5

Progress

Record Number	418519	Resolution	None
Progress	Not_Started	Priority	Seven
Actual Date		Projected Date	06/30/2032
Actual Cost	\$0.00	Contractor	
Comments	No Comments		
Assignment	None	New Value	0
Designated Staff			

Pangborn Avenue - Firestone Boulevard To Gotham Street

Sidewalks - Exterior : Sidewalks , Hazards & Gratings

West Side

Bush North Of Pellet Street @ 33.933582147767, -118.111883997917

Sidewalks , Hazards & Gratings : Sidewalk Width at Obstruction

Finding

Sidewalk width at the obstruction is not compliant.

On-Site Finding 44.00 inches

Recommendation

Sidewalk width at the obstruction shall have the recommended value.

Recommendation At least 48.00 inches

Costing Info (Estimated)

\$1,260



Code Reference ADA 206, 302, 403.5.1, CA 11B-403.5

Progress

Record Number	418526	Resolution	None
Progress	Not_Started	Priority	Seven
Actual Date		Projected Date	06/30/2032
Actual Cost	\$0.00	Contractor	
Comments	No Comments		
Assignment	None	New Value	0
Designated Staff			

Pangborn Avenue - Firestone Boulevard To Gotham Street

Sidewalks - Exterior : Sidewalks , Hazards & Gratings

West Side

Bush North Of Pellet Street @ 33.933702318700, -118.111795485020

Sidewalks , Hazards & Gratings : Sidewalk Width at Obstruction

Finding

Sidewalk width at the obstruction is not compliant.

On-Site Finding 36.00 inches

Recommendation

Sidewalk width at the obstruction shall have the recommended value.

Recommendation At least 48.00 inches

Costing Info (Estimated)

\$1,260



Code Reference ADA 206, 302, 403.5.1, CA 11B-403.5

Progress

Record Number	418514	Resolution	None
Progress	Not_Started	Priority	Seven
Actual Date		Projected Date	06/30/2032
Actual Cost	\$0.00	Contractor	
Comments	No Comments	New Value	0
Assignment	None		
Designated Staff			

Pangborn Avenue - Firestone Boulevard To Gotham Street

Sidewalks - Exterior : Sidewalks , Vehicular Traffic

West Side

Driveway North Of Firestone Boulevard @ 33.931014009880, -118.113632798195

Sidewalks , Vehicular Traffic : Cross Walks and Detectable Warnings

Finding

There are no detectable warnings where the pedestrian route crosses vehicular traffic.

On-Site Finding Not Found

Recommendation

Provide detectable warnings.

Recommendation See Recommendation

Costing Info (Estimated)

Install compliant detectable warnings \$190



Code Reference ADA 705,CA 11B-705.1.2.5,CA 11B-247.1.2.5

Progress

Record Number	418527	Resolution	None
Progress	Not_Started	Priority	Seven
Actual Date		Projected Date	06/30/2032
Actual Cost	\$0.00	Contractor	
Comments	No Comments	New Value	0
Assignment	None		
Designated Staff			

Pangborn Avenue - Firestone Boulevard To Gotham Street

Sidewalks - Exterior : Sidewalks

West Side

Driveway North Of Firestone Boulevard @ 33.931014009880, -118.113632798195

Sidewalks : Vehicular Traffic Cross Slope

Finding

Cross slope at vehicular traffic is not compliant.

On-Site Finding 8.90 percent

Recommendation

Repave the surface to provide a compliant cross slope.

Recommendation Up to 2.08 percent

Costing Info (Estimated)

Repave surface \$1,092



Code Reference ADA 206, 302, CA 11B-403.3

Progress

Record Number	418528	Resolution	None
Progress	Not_Started	Priority	Seven
Actual Date		Projected Date	06/30/2032
Actual Cost	\$0.00	Contractor	
Comments	No Comments		
Assignment	None	New Value	0
Designated Staff			

Pangborn Avenue - Firestone Boulevard To Gotham Street

Sidewalks - Exterior : Sidewalks , Vehicular Traffic

West Side

Driveway North Of Firestone Boulevard @ 33.931160889871, -118.113504052162

Sidewalks , Vehicular Traffic : Cross Walks and Detectable Warnings

Finding

There are no detectable warnings where the pedestrian route crosses vehicular traffic.

On-Site Finding Not Found

Recommendation

Provide detectable warnings.

Recommendation See Recommendation

Costing Info (Estimated)

Install compliant detectable warnings \$190



Code Reference ADA 705,CA 11B-705.1.2.5,CA 11B-247.1.2.5

Progress

Record Number	418529	Resolution	None
Progress	Not_Started	Priority	Seven
Actual Date		Projected Date	06/30/2032
Actual Cost	\$0.00	Contractor	
Comments	No Comments	New Value	0
Assignment	None		
Designated Staff			

Pangborn Avenue - Firestone Boulevard To Gotham Street

Sidewalks - Exterior : Sidewalks

West Side

Driveway North Of Firestone Boulevard @ 33.931160889871, -118.113504052162

Sidewalks : Vehicular Traffic Cross Slope

Finding

Cross slope at vehicular traffic is not compliant.

On-Site Finding 7.50 percent

Recommendation

Repave the surface to provide a compliant cross slope.

Recommendation Up to 2.08 percent

Costing Info (Estimated)

Repave surface \$1,092



Code Reference ADA 206, 302, CA 11B-403.3

Progress

Record Number	418530	Resolution	None
Progress	Not_Started	Priority	Seven
Actual Date		Projected Date	06/30/2032
Actual Cost	\$0.00	Contractor	
Comments	No Comments		
Assignment	None	New Value	0
Designated Staff			

Pangborn Avenue - Firestone Boulevard To Gotham Street

Sidewalks - Exterior : Sidewalks , Surface

West Side

Sidewalk North Of Buell Street @ 33.935280102816, -118.110666275024

Sidewalks , Surface : Cross Slope

Finding

Sidewalk cross slope is not compliant.

On-Site Finding 3.90 percent for 15.00 feet

Recommendation

Repave the sidewalk surface with the recommended cross slope.

Recommendation Up to 2.08 percent

Costing Info (Estimated)

Repave surface \$1,092



Code Reference ADA 206, 302,CA 11B-403.3

Progress

Record Number	418503	Resolution	None
Progress	Not_Started	Priority	Seven
Actual Date		Projected Date	06/30/2032
Actual Cost	\$0.00	Contractor	
Comments	No Comments		
Assignment	None	New Value	0
Designated Staff			

Pangborn Avenue - Firestone Boulevard To Gotham Street

Sidewalks - Exterior : Sidewalks , Surface

West Side

Sidewalk North Of Buell Street @ 33.935520439721, -118.110491931438

Sidewalks , Surface : Cross Slope

Finding

Sidewalk cross slope is not compliant.

On-Site Finding 4.20 percent for 20.00 feet

Recommendation

Repave the sidewalk surface with the recommended cross slope.

Recommendation Up to 2.08 percent

Costing Info (Estimated)

Repave surface \$1,092



Code Reference ADA 206, 302,CA 11B-403.3

Progress

Record Number	418500	Resolution	None
Progress	Not_Started	Priority	Seven
Actual Date		Projected Date	06/30/2032
Actual Cost	\$0.00	Contractor	
Comments	No Comments	New Value	0
Assignment	None		
Designated Staff			

Pangborn Avenue - Firestone Boulevard To Gotham Street

Sidewalks - Exterior : Sidewalks , Surface

West Side

Sidewalk North Of Buell Street @ 33.935854239852, -118.110253214836

Sidewalks , Surface : Cross Slope

Finding

Sidewalk cross slope is not compliant.

On-Site Finding 4.70 percent for 15.00 feet

Recommendation

Repave the sidewalk surface with the recommended cross slope.

Recommendation Up to 2.08 percent

Costing Info (Estimated)

Repave surface \$1,092



Code Reference ADA 206, 302, CA 11B-403.3

Progress

Record Number	418496	Resolution	None
Progress	Not_Started	Priority	Seven
Actual Date		Projected Date	06/30/2032
Actual Cost	\$0.00	Contractor	
Comments	No Comments		
Assignment	None	New Value	0
Designated Staff			

Pangborn Avenue - Firestone Boulevard To Gotham Street

Sidewalks - Exterior : Sidewalks , Surface

West Side

Sidewalk North Of Buell Street @ 33.936074547222, -118.110092282295

Sidewalks , Surface : Cross Slope

Finding

Sidewalk cross slope is not compliant.

On-Site Finding 3.50 percent for 70.00 feet

Recommendation

Repave the sidewalk surface with the recommended cross slope.

Recommendation Up to 2.08 percent

Costing Info (Estimated)

Repave surface \$1,092



Code Reference ADA 206, 302, CA 11B-403.3

Progress

Record Number	418494	Resolution	None
Progress	Not_Started	Priority	Seven
Actual Date		Projected Date	06/30/2032
Actual Cost	\$0.00	Contractor	
Comments	No Comments		
Assignment	None	New Value	0
Designated Staff			

Pangborn Avenue - Firestone Boulevard To Gotham Street

Sidewalks - Exterior : Sidewalks , Surface

West Side

Sidewalk North Of Buell Street @ 33.936744367138, -118.109614849091

Sidewalks , Surface : Cross Slope

Finding

Sidewalk cross slope is not compliant.

On-Site Finding 3.90 percent for 15.00 feet

Recommendation

Repave the sidewalk surface with the recommended cross slope.

Recommendation Up to 2.08 percent

Costing Info (Estimated)

Repave surface \$1,092



Code Reference ADA 206, 302, CA 11B-403.3

Progress

Record Number	418501	Resolution	None
Progress	Not_Started	Priority	Seven
Actual Date		Projected Date	06/30/2032
Actual Cost	\$0.00	Contractor	
Comments	No Comments		
Assignment	None	New Value	0
Designated Staff			

Pangborn Avenue - Firestone Boulevard To Gotham Street

Sidewalks - Exterior : Sidewalks , Surface

West Side

Sidewalk North Of Buell Street @ 33.937231707885, -118.109266161919

Sidewalks , Surface : Cross Slope

Finding

Sidewalk cross slope is not compliant.

On-Site Finding 3.70 percent for 40.00 feet

Recommendation

Repave the sidewalk surface with the recommended cross slope.

Recommendation Up to 2.08 percent

Costing Info (Estimated)

Repave surface \$1,092



Code Reference ADA 206, 302,CA 11B-403.3

Progress

Record Number	418506	Resolution	None
Progress	Not_Started	Priority	Seven
Actual Date		Projected Date	06/30/2032
Actual Cost	\$0.00	Contractor	
Comments	No Comments	New Value	0
Assignment	None		
Designated Staff			

Pangborn Avenue - Firestone Boulevard To Gotham Street

Sidewalks - Exterior : Sidewalks , Surface

West Side

Sidewalk North Of Cecilia Street @ 33.934249761917, -118.111374378204

Sidewalks , Surface : Cross Slope

Finding

Sidewalk cross slope is not compliant.

On-Site Finding 5.70 percent for 100.00 feet

Recommendation

Repave the sidewalk surface with the recommended cross slope.

Recommendation Up to 2.08 percent

Costing Info (Estimated)

Repave surface \$1,092



Code Reference ADA 206, 302, CA 11B-403.3

Progress

Record Number	418497	Resolution	None
Progress	Not_Started	Priority	Seven
Actual Date		Projected Date	06/30/2032
Actual Cost	\$0.00	Contractor	
Comments	No Comments	New Value	0
Assignment	None		
Designated Staff			

Pangborn Avenue - Firestone Boulevard To Gotham Street

Sidewalks - Exterior : Sidewalks , Surface

West Side

Sidewalk North Of Cecilia Street @ 33.934739342300, -118.111047148705

Sidewalks , Surface : Cross Slope

Finding

Sidewalk cross slope is not compliant.

On-Site Finding 4.10 percent for 85.00 feet

Recommendation

Repave the sidewalk surface with the recommended cross slope.

Recommendation Up to 2.08 percent

Costing Info (Estimated)

Repave surface \$1,092



Code Reference ADA 206, 302, CA 11B-403.3

Progress

Record Number	418499	Resolution	None
Progress	Not_Started	Priority	Seven
Actual Date		Projected Date	06/30/2032
Actual Cost	\$0.00	Contractor	
Comments	No Comments	New Value	0
Assignment	None		
Designated Staff			

Pangborn Avenue - Firestone Boulevard To Gotham Street

Sidewalks - Exterior : Sidewalks , Surface

West Side

Sidewalk North Of Firestone Boulevard @ 33.930773660257, -118.113817870617

Sidewalks , Surface : Cross Slope

Finding

Sidewalk cross slope is not compliant.

On-Site Finding 5.20 percent for 60.00 feet

Recommendation

Repave the sidewalk surface with the recommended cross slope.

Recommendation Up to 2.08 percent

Costing Info (Estimated)

Repave surface \$1,092



Code Reference ADA 206, 302,CA 11B-403.3

Progress

Record Number	418493	Resolution	None
Progress	Not_Started	Priority	Seven
Actual Date		Projected Date	06/30/2032
Actual Cost	\$0.00	Contractor	
Comments	No Comments		
Assignment	None	New Value	0
Designated Staff			

Pangborn Avenue - Firestone Boulevard To Gotham Street

Sidewalks - Exterior : Sidewalks , Surface

West Side

Sidewalk North Of Firestone Boulevard @ 33.931414591078, -118.113340437412

Sidewalks , Surface : Cross Slope

Finding

Sidewalk cross slope is not compliant.

On-Site Finding 4.10 percent for 40.00 feet

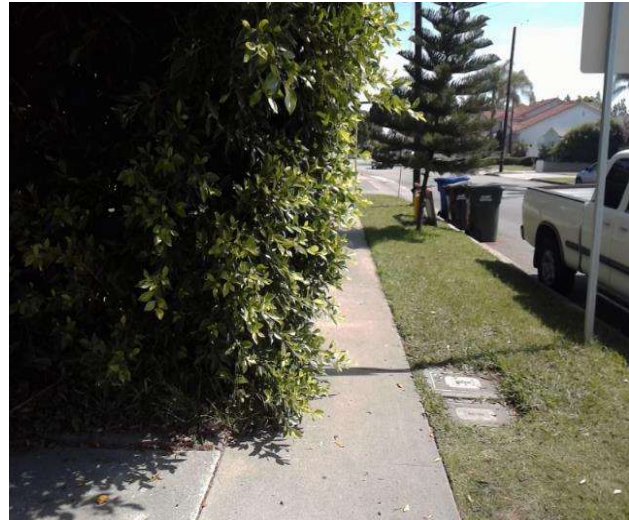
Recommendation

Repave the sidewalk surface with the recommended cross slope.

Recommendation Up to 2.08 percent

Costing Info (Estimated)

Repave surface \$1,092



Code Reference ADA 206, 302,CA 11B-403.3

Progress

Record Number	418507	Resolution	None
Progress	Not_Started	Priority	Seven
Actual Date		Projected Date	06/30/2032
Actual Cost	\$0.00	Contractor	
Comments	No Comments		
Assignment	None	New Value	0
Designated Staff			

Pangborn Avenue - Firestone Boulevard To Gotham Street

Sidewalks - Exterior : Sidewalks , Surface

West Side

Sidewalk North Of Pellet Street @ 33.931694996795, -118.113139271736

Sidewalks , Surface : Cross Slope

Finding

Sidewalk cross slope is not compliant.

On-Site Finding 3.60 percent for 100.00 feet

Recommendation

Repave the sidewalk surface with the recommended cross slope.

Recommendation Up to 2.08 percent

Costing Info (Estimated)

Repave surface \$1,092



Code Reference ADA 206, 302,CA 11B-403.3

Progress

Record Number	418508	Resolution	None
Progress	Not_Started	Priority	Seven
Actual Date		Projected Date	06/30/2032
Actual Cost	\$0.00	Contractor	
Comments	No Comments	New Value	0
Assignment	None		
Designated Staff			

Pangborn Avenue - Firestone Boulevard To Gotham Street

Sidewalks - Exterior : Sidewalks , Surface

West Side

Sidewalk North Of Pellet Street @ 33.932255805461, -118.112828135490

Sidewalks , Surface : Cross Slope

Finding

Sidewalk cross slope is not compliant.

On-Site Finding 3.90 percent for 35.00 feet

Recommendation

Repave the sidewalk surface with the recommended cross slope.

Recommendation Up to 2.08 percent

Costing Info (Estimated)

Repave surface \$1,092



Code Reference ADA 206, 302,CA 11B-403.3

Progress

Record Number	418504	Resolution	None
Progress	Not_Started	Priority	Seven
Actual Date		Projected Date	06/30/2032
Actual Cost	\$0.00	Contractor	
Comments	No Comments		
Assignment	None	New Value	0
Designated Staff			

Pangborn Avenue - Firestone Boulevard To Gotham Street

Sidewalks - Exterior : Sidewalks , Surface

West Side

Sidewalk North Of Pellet Street @ 33.932402683310, -118.112726211548

Sidewalks , Surface : Cross Slope

Finding

Sidewalk cross slope is not compliant.

On-Site Finding 3.80 percent for 50.00 feet

Recommendation

Repave the sidewalk surface with the recommended cross slope.

Recommendation Up to 2.08 percent

Costing Info (Estimated)

Repave surface \$1,092



Code Reference ADA 206, 302, CA 11B-403.3

Progress

Record Number	418495	Resolution	None
Progress	Not_Started	Priority	Seven
Actual Date		Projected Date	06/30/2032
Actual Cost	\$0.00	Contractor	
Comments	No Comments		
Assignment	None	New Value	0
Designated Staff			

Pangborn Avenue - Firestone Boulevard To Gotham Street

Sidewalks - Exterior : Sidewalks , Surface

West Side

Sidewalk North Of Pellet Street @ 33.932887823498, -118.112380206585

Sidewalks , Surface : Cross Slope

Finding

Sidewalk cross slope is not compliant.

On-Site Finding 3.00 percent for 40.00 feet

Recommendation

Repave the sidewalk surface with the recommended cross slope.

Recommendation Up to 2.08 percent

Costing Info (Estimated)

Repave surface \$1,092



Code Reference ADA 206, 302,CA 11B-403.3

Progress

Record Number	418498	Resolution	None
Progress	Not_Started	Priority	Seven
Actual Date		Projected Date	06/30/2032
Actual Cost	\$0.00	Contractor	
Comments	No Comments		
Assignment	None	New Value	0
Designated Staff			

Pangborn Avenue - Firestone Boulevard To Gotham Street

Sidewalks - Exterior : Sidewalks , Surface

West Side

Sidewalk North Of Pellet Street @ 33.933375186317, -118.112026154995

Sidewalks , Surface : Cross Slope

Finding

Sidewalk cross slope is not compliant.

On-Site Finding 4.00 percent for 65.00 feet

Recommendation

Repave the sidewalk surface with the recommended cross slope.

Recommendation Up to 2.08 percent

Costing Info (Estimated)

Repave surface \$1,092



Code Reference ADA 206, 302,CA 11B-403.3

Progress

Record Number	418505	Resolution	None
Progress	Not_Started	Priority	Seven
Actual Date		Projected Date	06/30/2032
Actual Cost	\$0.00	Contractor	
Comments	No Comments		
Assignment	None	New Value	0
Designated Staff			

Pangborn Avenue - Firestone Boulevard To Gotham Street

Sidewalks - Exterior : Sidewalks , Surface

West Side

Sidewalk North Of Pellet Street @ 33.933842517908, -118.111701607704

Sidewalks , Surface : Cross Slope

Finding

Sidewalk cross slope is not compliant.

On-Site Finding 5.60 percent for 20.00 feet

Recommendation

Repave the sidewalk surface with the recommended cross slope.

Recommendation Up to 2.08 percent

Costing Info (Estimated)

Repave surface \$1,092



Code Reference ADA 206, 302,CA 11B-403.3

Progress

Record Number	418502	Resolution	None
Progress	Not_Started	Priority	Seven
Actual Date		Projected Date	06/30/2032
Actual Cost	\$0.00	Contractor	
Comments	No Comments		
Assignment	None	New Value	0
Designated Staff			

Pangborn Avenue - Firestone Boulevard To Gotham Street

Sidewalks - Exterior : Sidewalks , Hazards & Gratings

West Side

Tree North Of Cecilia Street @ 33.934220832079, -118.111425340176

Sidewalks , Hazards & Gratings : Overhead Obstruction Height

Finding

Overhead obstruction height is not compliant.

On-Site Finding 56.00 inches

Recommendation

Provide a compliant vertical clearance height.

Recommendation At least 80.00 inches

Costing Info (Estimated)

Unassigned



Code Reference ADA 206, 307.4, CA 11B-307.4

Progress

Record Number	418510	Resolution	None
Progress	Not_Started	Priority	Seven
Actual Date		Projected Date	06/30/2032
Actual Cost	\$0.00	Contractor	
Comments	No Comments		
Assignment	None	New Value	0
Designated Staff			

Pangborn Avenue - Firestone Boulevard To Gotham Street

Sidewalks - Exterior : Sidewalks , Hazards & Gratings

West Side

Tree North Of Cecilia Street @ 33.934427791473, -118.111264407635

Sidewalks , Hazards & Gratings : Overhead Obstruction Height

Finding

Overhead obstruction height is not compliant.

On-Site Finding 61.00 inches

Recommendation

Provide a compliant vertical clearance height.

Recommendation At least 80.00 inches

Costing Info (Estimated)

Unassigned



Code Reference ADA 206, 307.4, CA 11B-307.4

Progress

Record Number	418509	Resolution	None
Progress	Not_Started	Priority	Seven
Actual Date		Projected Date	06/30/2032
Actual Cost	\$0.00	Contractor	
Comments	No Comments		
Assignment	None	New Value	0
Designated Staff			

Pangborn Avenue - Firestone Boulevard To Gotham Street

Sidewalks - Exterior : Sidewalks , Hazards & Gratings

West Side

Tree North Of Firestone Boulevard @ 33.931445747314, -118.113305568695

Sidewalks , Hazards & Gratings : Overhead Obstruction Height

Finding

Overhead obstruction height is not compliant.

On-Site Finding 71.00 inches

Recommendation

Provide a compliant vertical clearance height.

Recommendation At least 80.00 inches

Costing Info (Estimated)

Unassigned



Code Reference ADA 206, 307.4,CA 11B-307.4

Progress

Record Number	418521	Resolution	None
Progress	Not_Started	Priority	Seven
Actual Date		Projected Date	06/30/2032
Actual Cost	\$0.00	Contractor	
Comments	No Comments		
Assignment	None	New Value	0
Designated Staff			

Pangborn Avenue - Firestone Boulevard To Gotham Street

Sidewalks - Exterior : Sidewalks , Hazards & Gratings

West Side

Tree North Of Firestone Boulevard @ 33.931508059753, -118.113273382187

Sidewalks , Hazards & Gratings : Overhead Obstruction Height

Finding

Overhead obstruction height is not compliant.

On-Site Finding 67.00 inches

Recommendation

Provide a compliant vertical clearance height.

Recommendation At least 80.00 inches

Costing Info (Estimated)

Unassigned



Code Reference ADA 206, 307.4,CA 11B-307.4

Progress

Record Number	418523	Resolution	None
Progress	Not_Started	Priority	Seven
Actual Date		Projected Date	06/30/2032
Actual Cost	\$0.00	Contractor	
Comments	No Comments		
Assignment	None	New Value	0
Designated Staff			

Pangborn Avenue - Firestone Boulevard To Gotham Street



Pangborn Avenue - Firestone Boulevard To Gotham Street

**Firestone Boulevard To Gotham Street
Downey, CA 90241**

Date of Inspection
5/3/2017

***Estimated Facility Total: \$65,603**

*Estimated facility total is for estimating purposes only and does not represent total construction, repair totals or design fees.

Prepared By

Disability Access Consultants

(800) 743-7067

Prepared Using



Accessibility Survey



City of Downey Pangborn Avenue - Gotham Street To Florence Avenue

Gotham Street To Florence Avenue
Downey, CA 90241

Date of Inspection
5/3/2017

Prepared By

Disability Access Consultants

(800) 743-7067

Pangborn Avenue - Gotham Street To Florence Avenue

Sidewalks - Exterior : Sidewalks

East Side @ 33.941490813775, -118.105972409248

Sidewalks : No Sidewalk

Finding

No sidewalk exists at the location.

On-Site Finding Not Found

Recommendation

No action necessary until a sidewalk is provided.

Recommendation See Recommendation

Costing Info (Estimated)

Unassigned



Code Reference ADA 206

Progress

Record Number	418661	Resolution	None
Progress	Not_Started	Priority	Seven
Actual Date		Projected Date	06/30/2037
Actual Cost	\$0.00	Contractor	
Comments	No Comments		
Assignment	None	New Value	0
Designated Staff			

Pangborn Avenue - Gotham Street To Florence Avenue

Sidewalks - Exterior : Sidewalks

West Side @ 33.937496517441, -118.109070360661

Sidewalks : No Sidewalk

Finding

No sidewalk exists at the location.

On-Site Finding Not Found

Recommendation

No action necessary until a sidewalk is provided.

Recommendation See Recommendation

Costing Info (Estimated)

Unassigned



Code Reference ADA 206

Progress

Record Number	418662	Resolution	None
Progress	Not_Started	Priority	Seven
Actual Date		Projected Date	06/30/2037
Actual Cost	\$0.00	Contractor	
Comments	No Comments	New Value	0
Assignment	None		
Designated Staff			

Pangborn Avenue - Gotham Street To Florence Avenue



Pangborn Avenue - Gotham Street To Florence Avenue

**Gotham Street To Florence Avenue
Downey, CA 90241**

Date of Inspection
5/3/2017

***Estimated Facility Total: \$0**

*Estimated facility total is for estimating purposes only and does not represent total construction, repair totals or design fees.

Prepared By

Disability Access Consultants

(800) 743-7067

Prepared Using



Accessibility Survey



City of Downey Pangborn Avenue - Nance Street to End

Nance Street to End
Downey, CA 90242

Date of Inspection
8/8/2017

Prepared By
Disability Access Consultants
(800) 743-7067

Pangborn Avenue - Nance Street to End

Sidewalks - Exterior : Sidewalks , Change in Level

East Side

Change in Level South of End @ 33.929631990284, -118.114702999592

Sidewalks , Change in Level : Change in Level Non Beveled

Finding

There is a change in elevation greater than recommended value.

On-Site Finding 0.50 inches

Recommendation

Ensure that the change in elevation is within the recommended value.

Recommendation Up to 0.25 inches

Costing Info (Estimated)

Remove tripping hazards \$198



Code Reference ADA 206, 302

Progress

Record Number	477522	Resolution	None
Progress	Not_Started	Priority	Two
Actual Date		Projected Date	06/30/2021
Actual Cost	\$0.00	Contractor	
Comments	No Comments	New Value	0
Assignment	None		
Designated Staff			

Pangborn Avenue - Nance Street to End

Sidewalks - Exterior : Sidewalks , Change in Level

East Side

Change in Level South of End @ 33.929710995229, -118.114653378725

Sidewalks , Change in Level : Change in Level Non Beveled

Finding

There is a change in elevation greater than recommended value.

On-Site Finding 0.75 inches

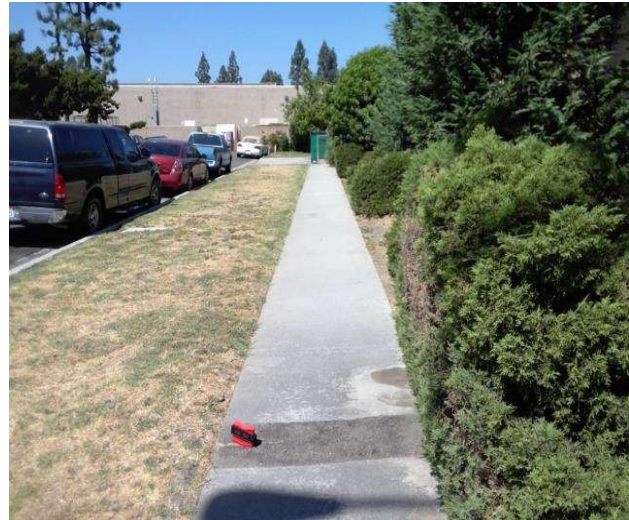
Recommendation

Ensure that the change in elevation is within the recommended value.

Recommendation Up to 0.25 inches

Costing Info (Estimated)

Remove tripping hazards \$198



Code Reference ADA 206, 302

Progress

Record Number	477521	Resolution	None
Progress	Not_Started	Priority	Two
Actual Date		Projected Date	06/30/2021
Actual Cost	\$0.00	Contractor	
Comments	No Comments	New Value	0
Assignment	None		
Designated Staff			

Pangborn Avenue - Nance Street to End

Sidewalks - Exterior : Sidewalks , Change in Level

West Side

Change in Level North of Nance Street @ 33.929990293814, -118.114689588547

Sidewalks , Change in Level : Change in Level Non Beveled

Finding

There is a change in elevation greater than recommended value.

On-Site Finding 0.37 inches

Recommendation

Ensure that the change in elevation is within the recommended value.

Recommendation Up to 0.25 inches

Costing Info (Estimated)

Remove tripping hazards \$198



Code Reference ADA 206, 302

Progress

Record Number	477530	Resolution	None
Progress	Not_Started	Priority	Three
Actual Date		Projected Date	12/31/2022
Actual Cost	\$0.00	Contractor	
Comments	No Comments	New Value	0
Assignment	None		
Designated Staff			

Pangborn Avenue - Nance Street to End

Sidewalks - Exterior : Sidewalks , Hazards & Gratings

East Side

Bush South of End @ 33.929616411835, -118.114705681801

Sidewalks , Hazards & Gratings : Sidewalk Width at Obstruction

Finding

Sidewalk width at the obstruction is not compliant.

On-Site Finding 34.00 inches

Recommendation

Sidewalk width at the obstruction shall have the recommended value.

Recommendation At least 48.00 inches

Costing Info (Estimated)

\$1,260



Code Reference ADA 206, 302, 403.5.1, CA 11B-403.5

Progress

Record Number	477523	Resolution	None
Progress	Not_Started	Priority	Seven
Actual Date		Projected Date	06/30/2032
Actual Cost	\$0.00	Contractor	
Comments	No Comments		
Assignment	None	New Value	0
Designated Staff			

Pangborn Avenue - Nance Street to End

Sidewalks - Exterior : Sidewalks , Hazards & Gratings

East Side

Bush South of End @ 33.929638666761, -118.114696294069

Sidewalks , Hazards & Gratings : Sidewalk Width at Obstruction

Finding

Sidewalk width at the obstruction is not compliant.

On-Site Finding 32.00 inches

Recommendation

Sidewalk width at the obstruction shall have the recommended value.

Recommendation At least 48.00 inches

Costing Info (Estimated)

\$1,260



Code Reference ADA 206, 302, 403.5.1, CA 11B-403.5

Progress

Record Number	477520	Resolution	None
Progress	Not_Started	Priority	Seven
Actual Date		Projected Date	06/30/2032
Actual Cost	\$0.00	Contractor	
Comments	No Comments	New Value	0
Assignment	None		
Designated Staff			

Pangborn Avenue - Nance Street to End

Sidewalks - Exterior : Sidewalks , Vehicular Traffic

East Side

Driveway South of End @ 33.929584142183, -118.114755302668

Sidewalks , Vehicular Traffic : Cross Walks and Detectable Warnings

Finding

There are no detectable warnings where the pedestrian route crosses vehicular traffic.

On-Site Finding Not Found

Recommendation

Provide detectable warnings.

Recommendation See Recommendation

Costing Info (Estimated)

Install compliant detectable warnings \$190



Code Reference ADA 705,CA 11B-705.1.2.5,CA 11B-247.1.2.5

Progress

Record Number	477524	Resolution	None
Progress	Not_Started	Priority	Seven
Actual Date		Projected Date	06/30/2032
Actual Cost	\$0.00	Contractor	
Comments	No Comments	New Value	0
Assignment	None		
Designated Staff			

Pangborn Avenue - Nance Street to End

Sidewalks - Exterior : Sidewalks

East Side

Driveway South of End @ 33.929584142183, -118.114755302668

Sidewalks : Vehicular Traffic Cross Slope

Finding

Cross slope at vehicular traffic is not compliant.

On-Site Finding 5.30 percent

Recommendation

Repave the surface to provide a compliant cross slope.

Recommendation Up to 2.08 percent

Costing Info (Estimated)

Repave surface \$1,092



Code Reference ADA 206, 302, CA 11B-403.3

Progress

Record Number	477525	Resolution	None
Progress	Not_Started	Priority	Seven
Actual Date		Projected Date	06/30/2032
Actual Cost	\$0.00	Contractor	
Comments	No Comments	New Value	0
Assignment	None		
Designated Staff			

Pangborn Avenue - Nance Street to End

Sidewalks - Exterior : Sidewalks , Surface

East Side

Sidewalk South of End @ 33.929925754780, -118.114520609379

Sidewalks , Surface : Cross Slope

Finding

Sidewalk cross slope is not compliant.

On-Site Finding 3.70 percent for 121.00 feet

Recommendation

Repave the sidewalk surface with the recommended cross slope.

Recommendation Up to 2.08 percent

Costing Info (Estimated)

Repave surface \$1,092



Code Reference ADA 206, 302,CA 11B-403.3

Progress

Record Number	477519	Resolution	None
Progress	Not_Started	Priority	Seven
Actual Date		Projected Date	06/30/2032
Actual Cost	\$0.00	Contractor	
Comments	No Comments		
Assignment	None	New Value	0
Designated Staff			

Pangborn Avenue - Nance Street to End

Sidewalks - Exterior : Sidewalks

East Side

Sidewalk South of End @ 33.930071523908, -118.114453554153

Sidewalks : Missing Sidewalk

Finding

Section of sidewalk is missing and consists of dirt, grass or gravel.

On-Site Finding 60.00 feet

Recommendation

Provide a compliant sidewalk for the missing section.

Recommendation See Recommendation

Costing Info (Estimated)

\$1,260



Code Reference ADA 206, 302,CA 11B-302,CA 11B-206

Progress

Record Number	477518	Resolution	None
Progress	Not_Started	Priority	Seven
Actual Date		Projected Date	06/30/2037
Actual Cost	\$0.00	Contractor	
Comments	No Comments	New Value	0
Assignment	None		
Designated Staff			

Pangborn Avenue - Nance Street to End

Sidewalks - Exterior : Sidewalks

East Side @ 33.930071523908, -118.114453554153

Sidewalks : 60X60 Turn Area

Finding

There is no 60X60 turn area at every 200 feet.

On-Site Finding Not Found

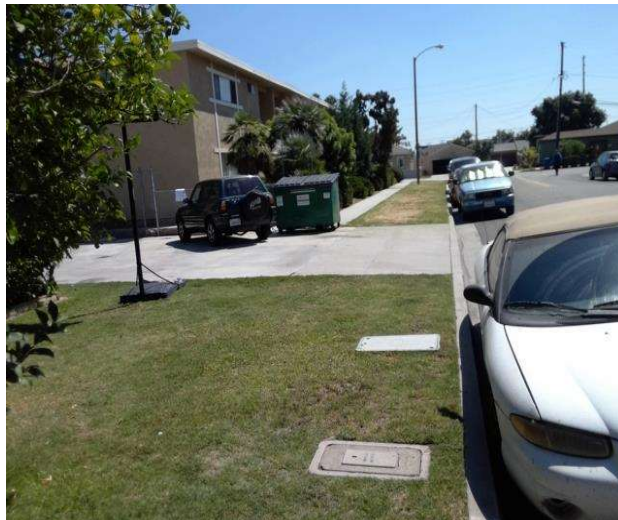
Recommendation

Provide a 60X60 turn every 200 feet on the sidewalk.

Recommendation See Recommendation

Costing Info (Estimated)

\$2,400



Code Reference ADA 206, 302

Progress

Record Number	477531	Resolution	None
Progress	Not_Started	Priority	Seven
Actual Date		Projected Date	06/30/2032
Actual Cost	\$0.00	Contractor	
Comments	No Comments		
Assignment	None	New Value	0
Designated Staff			

Pangborn Avenue - Nance Street to End

Sidewalks - Exterior : Sidewalks , Surface

West Side

Sidewalk North of Nance Street @ 33.929748828557, -118.114846497774

Sidewalks , Surface : Cross Slope

Finding

Sidewalk cross slope is not compliant.

On-Site Finding 3.70 percent for 140.00 feet

Recommendation

Repave the sidewalk surface with the recommended cross slope.

Recommendation Up to 2.08 percent

Costing Info (Estimated)

Repave surface \$1,092



Code Reference ADA 206, 302,CA 11B-403.3

Progress

Record Number	477527	Resolution	None
Progress	Not_Started	Priority	Seven
Actual Date		Projected Date	06/30/2032
Actual Cost	\$0.00	Contractor	
Comments	No Comments		
Assignment	None	New Value	0
Designated Staff			

Pangborn Avenue - Nance Street to End

Sidewalks - Exterior : Sidewalks , Hazards & Gratings

West Side

Tree North of Nance Street @ 33.929931318492, -118.114727139473

Sidewalks , Hazards & Gratings : Sidewalk Width at Obstruction

Finding

Sidewalk width at the obstruction is not compliant.

On-Site Finding 33.00 inches

Recommendation

Sidewalk width at the obstruction shall have the recommended value.

Recommendation At least 48.00 inches

Costing Info (Estimated)

\$1,260



Code Reference ADA 206, 302, 403.5.1, CA 11B-403.5

Progress

Record Number	477529	Resolution	None
Progress	Not_Started	Priority	Seven
Actual Date		Projected Date	06/30/2032
Actual Cost	\$0.00	Contractor	
Comments	No Comments		
Assignment	None	New Value	0
Designated Staff			

Pangborn Avenue - Nance Street to End

Sidewalks - Exterior : Sidewalks , Hazards & Gratings

West Side

Tree North of Nance Street @ 33.930112695296, -118.114583641291

Sidewalks , Hazards & Gratings : Overhead Obstruction Height

Finding

Overhead obstruction height is not compliant.

On-Site Finding 44.00 inches

Recommendation

Provide a compliant vertical clearance height.

Recommendation At least 80.00 inches

Costing Info (Estimated)

Unassigned



Code Reference ADA 206, 307.4,CA 11B-307.4

Progress

Record Number	477528	Resolution	None
Progress	Not_Started	Priority	Seven
Actual Date		Projected Date	06/30/2032
Actual Cost	\$0.00	Contractor	
Comments	No Comments		
Assignment	None	New Value	0
Designated Staff			

Pangborn Avenue - Nance Street to End

Sidewalks - Exterior : Sidewalks

West Side @ 33.929748828557, -118.114846497774

Sidewalks : 60X60 Turn Area

Finding

There is no 60X60 turn area at every 200 feet.

On-Site Finding Not Found

Recommendation

Provide a 60X60 turn every 200 feet on the sidewalk.

Recommendation See Recommendation

Costing Info (Estimated)

\$2,400



Code Reference ADA 206, 302

Progress

Record Number	477532	Resolution	None
Progress	Not_Started	Priority	Seven
Actual Date		Projected Date	06/30/2032
Actual Cost	\$0.00	Contractor	
Comments	No Comments		
Assignment	None	New Value	0
Designated Staff			

Pangborn Avenue - Nance Street to End



Pangborn Avenue - Nance Street to End

Nance Street to End
Downey, CA 90242

Date of Inspection
8/8/2017

***Estimated Facility Total: \$13,900**

*Estimated facility total is for estimating purposes only and does not represent total construction, repair totals or design fees.

Prepared By

Disability Access Consultants

(800) 743-7067

Prepared Using



Accessibility Survey



City of Downey Pangborn Avenue - Washburn Road To Seaaca Street

Washburn Road To Seaaca Street
Downey, CA 90424

Date of Inspection
12/7/2016

Prepared By

Disability Access Consultants

(800) 743-7067

Pangborn Avenue - Washburn Road To Seaaca Street

Sidewalks - Exterior : Sidewalks , Change in Level

East Side

Change In Level South Of Washburn Road @ 33.924166005454, -118.113364577293

Sidewalks , Change in Level : Change in Level Non Beveled

Finding

There is a change in elevation greater than recommended value.

On-Site Finding 0.50 inches

Recommendation

Ensure that the change in elevation is within the recommended value.

Recommendation Up to 0.25 inches

Costing Info (Estimated)

Remove tripping hazards \$198



Code Reference ADA 206, 302

Progress

Record Number	316987	Resolution	None
Progress	Not_Started	Priority	Two
Actual Date		Projected Date	06/30/2021
Actual Cost	\$0.00	Contractor	
Comments	No Comments	New Value	0
Assignment	None		
Designated Staff			

Pangborn Avenue - Washburn Road To Seaaca Street

Curb Ramps - Exterior : Curb Ramp

Northeast Corner Of Washburn Road @ 33.922007111894, - 118.113337755203

Curb Ramp : No Detectable Warnings

Finding

The curb ramp does not provide a detectable warning surface which includes truncated domes.

On-Site Finding Not Found

Recommendation

Provide compliant detectable warnings to surface.

Recommendation See Recommendation

Costing Info (Estimated)

Provide detectable warning to surface \$248



Code Reference CA 11B-406.5.12

Progress

Record Number	316990	Resolution	None
Progress	Not_Started	Priority	Seven
Actual Date		Projected Date	06/30/2032
Actual Cost	\$0.00	Contractor	
Comments	No Comments	New Value	0
Assignment	None		
Designated Staff			

Pangborn Avenue - Washburn Road To Seaaca Street

Curb Ramps - Exterior : Curb Ramp

Northeast Corner Of Washburn Road @ 33.922007111894, - 118.113337755203

Curb Ramp : Side Flare Slope

Finding

The slope of the curb ramp side flare is greater than allowed.

On-Site Finding 13.00 percent

Recommendation

Provide curb ramp side flares with a compliant slope.

Recommendation Up to 10.00 percent

Costing Info (Estimated)

Install flared sides \$1,300



Code Reference ADA 406, 406.3, CA 11B-406.2.2

Progress

Record Number	316991	Resolution	None
Progress	Not_Started	Priority	Seven
Actual Date		Projected Date	06/30/2032
Actual Cost	\$0.00	Contractor	
Comments	No Comments		
Assignment	None	New Value	0
Designated Staff			

Pangborn Avenue - Washburn Road To Seaaca Street

Curb Ramps - Exterior : Curb Ramp

Northeast Corner Of Washburn Road @ 33.922007111894, - 118.113337755203

Bottom Landing

Curb Ramp : Bottom Landing Slope

Finding

The bottom landing of the curb ramp is on the street, and the slope of the bottom landing is not compliant.

On-Site Finding 7.50 percent

Recommendation

Ensure the bottom landing slope is compliant and provides a smooth transition.

Recommendation Up to 5.00 percent

Costing Info (Estimated)

Repave landing \$1,260



Code Reference ADA 406, 406.2, CA 11B-406.5.8

Progress

Record Number	316992	Resolution	None
Progress	Not_Started	Priority	Seven
Actual Date		Projected Date	06/30/2032
Actual Cost	\$0.00	Contractor	
Comments	No Comments	New Value	0
Assignment	None		
Designated Staff			

Pangborn Avenue - Washburn Road To Seaaca Street

Sidewalks - Exterior : Sidewalks , Vehicular Traffic

East Side

Driveway South Of Washburn Road @ 33.922007111894, -118.113337755203

Sidewalks , Vehicular Traffic : Cross Walks and Detectable Warnings

Finding

There are no detectable warnings where the pedestrian route crosses vehicular traffic.

On-Site Finding Not Found

Recommendation

Provide detectable warnings.

Recommendation See Recommendation

Costing Info (Estimated)

Install compliant detectable warnings \$190



Code Reference ADA 705,CA 11B-705.1.2.5,CA 11B-247.1.2.5

Progress

Record Number	316989	Resolution	None
Progress	Not_Started	Priority	Seven
Actual Date		Projected Date	06/30/2032
Actual Cost	\$0.00	Contractor	
Comments	No Comments	New Value	0
Assignment	None		
Designated Staff			

Pangborn Avenue - Washburn Road To Seaaca Street

Sidewalks - Exterior : Sidewalks , Vehicular Traffic

East Side

Driveway South Of Washburn Road @ 33.923622948719, -118.113318979740

Sidewalks , Vehicular Traffic : Cross Walks and Detectable Warnings

Finding

There are no detectable warnings where the pedestrian route crosses vehicular traffic.

On-Site Finding Not Found

Recommendation

Provide detectable warnings.

Recommendation See Recommendation

Costing Info (Estimated)

Install compliant detectable warnings \$190



Code Reference ADA 705,CA 11B-705.1.2.5,CA 11B-247.1.2.5

Progress

Record Number	316988	Resolution	None
Progress	Not_Started	Priority	Seven
Actual Date		Projected Date	06/30/2032
Actual Cost	\$0.00	Contractor	
Comments	No Comments	New Value	0
Assignment	None		
Designated Staff			

Pangborn Avenue - Washburn Road To Seaaca Street

Sidewalks - Exterior : Sidewalks , Surface

East Side

Sidewalk South Of Washburn Road @ 33.923869995450, -118.113327026367

Sidewalks , Surface : Cross Slope

Finding

Sidewalk cross slope is not compliant.

On-Site Finding 3.70 percent for 7.00 feet

Recommendation

Repave the sidewalk surface with the recommended cross slope.

Recommendation Up to 2.08 percent

Costing Info (Estimated)

Repave surface \$1,092



Code Reference ADA 206, 302, CA 11B-403.3

Progress

Record Number	316985	Resolution	None
Progress	Not_Started	Priority	Seven
Actual Date		Projected Date	06/30/2032
Actual Cost	\$0.00	Contractor	
Comments	No Comments	New Value	0
Assignment	None		
Designated Staff			

Pangborn Avenue - Washburn Road To Seaaca Street

Sidewalks - Exterior : Sidewalks , Surface

East Side

Sidewalk South Of Washburn Road @ 33.923869995450, -118.113327026367

Sidewalks , Surface : Running Slope

Finding

Sidewalk running slope is not compliant.

On-Site Finding 11.00 percent for 7.00 feet

Recommendation

Repave the sidewalk surface with the recommended running slope.

Recommendation Up to 5.00 percent

Costing Info (Estimated)

Repave surface \$1,184



Code Reference ADA 206, 302

Progress

Record Number	316986	Resolution	None
Progress	Not_Started	Priority	Seven
Actual Date		Projected Date	06/30/2032
Actual Cost	\$0.00	Contractor	
Comments	No Comments	New Value	0
Assignment	None		
Designated Staff			

Pangborn Avenue - Washburn Road To Seaaca Street

Sidewalks - Exterior : Sidewalks

East Side @ 33.924228323219, -118.113327026367

Sidewalks : 60X60 Turn Area

Finding

There is no 60X60 turn area at every 200 feet.

On-Site Finding Not Found

Recommendation

Provide a 60X60 turn every 200 feet on the sidewalk.

Recommendation See Recommendation

Costing Info (Estimated)

\$2,400



Code Reference ADA 206, 302

Progress

Record Number	316984	Resolution	None
Progress	Not_Started	Priority	Seven
Actual Date		Projected Date	06/30/2032
Actual Cost	\$0.00	Contractor	
Comments	No Comments		
Assignment	None	New Value	0
Designated Staff			

Pangborn Avenue - Washburn Road To Seaaca Street

Sidewalks - Exterior : Sidewalks , Vehicular Traffic

West Side

Driveway North Of Seaaca Street @ 33.922154007417, -118.113525509834

Sidewalks , Vehicular Traffic : Cross Walks and Detectable Warnings

Finding

There are no detectable warnings where the pedestrian route crosses vehicular traffic.

On-Site Finding Not Found

Recommendation

Provide detectable warnings.

Recommendation See Recommendation

Costing Info (Estimated)

Install compliant detectable warnings \$190



Code Reference ADA 705,CA 11B-705.1.2.5,CA 11B-247.1.2.5

Progress

Record Number	317003	Resolution	None
Progress	Not_Started	Priority	Seven
Actual Date		Projected Date	06/30/2032
Actual Cost	\$0.00	Contractor	
Comments	No Comments	New Value	0
Assignment	None		
Designated Staff			

Pangborn Avenue - Washburn Road To Seaaca Street

Sidewalks - Exterior : Sidewalks

West Side

Driveway North Of Seaaca Street @ 33.922154007417, -118.113525509834

Sidewalks : Vehicular Traffic Cross Slope

Finding

Cross slope at vehicular traffic is not compliant.

On-Site Finding 7.60 percent

Recommendation

Repave the surface to provide a compliant cross slope.

Recommendation Up to 2.08 percent

Costing Info (Estimated)

Repave surface \$1,092



Code Reference ADA 206, 302, CA 11B-403.3

Progress

Record Number	317004	Resolution	None
Progress	Not_Started	Priority	Seven
Actual Date		Projected Date	06/30/2032
Actual Cost	\$0.00	Contractor	
Comments	No Comments	New Value	0
Assignment	None		
Designated Staff			

Pangborn Avenue - Washburn Road To Seaaca Street

Sidewalks - Exterior : Sidewalks , Vehicular Traffic

West Side

Driveway North Of Seaaca Street @ 33.922997538928, -118.113504052162

Sidewalks , Vehicular Traffic : Cross Walks and Detectable Warnings

Finding

There are no detectable warnings where the pedestrian route crosses vehicular traffic.

On-Site Finding Not Found

Recommendation

Provide detectable warnings.

Recommendation See Recommendation

Costing Info (Estimated)

Install compliant detectable warnings \$190



Code Reference ADA 705,CA 11B-705.1.2.5,CA 11B-247.1.2.5

Progress

Record Number	317001	Resolution	None
Progress	Not_Started	Priority	Seven
Actual Date		Projected Date	06/30/2032
Actual Cost	\$0.00	Contractor	
Comments	No Comments		
Assignment	None	New Value	0
Designated Staff			

Pangborn Avenue - Washburn Road To Seaaca Street

Sidewalks - Exterior : Sidewalks

West Side

Driveway North Of Seaaca Street @ 33.922997538928, -118.113504052162

Sidewalks : Vehicular Traffic Cross Slope

Finding

Cross slope at vehicular traffic is not compliant.

On-Site Finding 5.60 percent

Recommendation

Repave the surface to provide a compliant cross slope.

Recommendation Up to 2.08 percent

Costing Info (Estimated)

Repave surface \$1,092



Code Reference ADA 206, 302, CA 11B-403.3

Progress

Record Number	317002	Resolution	None
Progress	Not_Started	Priority	Seven
Actual Date		Projected Date	06/30/2032
Actual Cost	\$0.00	Contractor	
Comments	No Comments		
Assignment	None	New Value	0
Designated Staff			

Pangborn Avenue - Washburn Road To Seaaca Street

Sidewalks - Exterior : Sidewalks , Vehicular Traffic

West Side

Driveway North Of Seaaca Street @ 33.923556179210, -118.113517463207

Sidewalks , Vehicular Traffic : Cross Walks and Detectable Warnings

Finding

There are no detectable warnings where the pedestrian route crosses vehicular traffic.

On-Site Finding Not Found

Recommendation

Provide detectable warnings.

Recommendation See Recommendation

Costing Info (Estimated)

Install compliant detectable warnings \$190



Code Reference ADA 705,CA 11B-705.1.2.5,CA 11B-247.1.2.5

Progress

Record Number	316999	Resolution	None
Progress	Not_Started	Priority	Seven
Actual Date		Projected Date	06/30/2032
Actual Cost	\$0.00	Contractor	
Comments	No Comments	New Value	0
Assignment	None		
Designated Staff			

Pangborn Avenue - Washburn Road To Seaaca Street

Sidewalks - Exterior : Sidewalks

West Side

Driveway North Of Seaaca Street @ 33.923556179210, -118.113517463207

Sidewalks : Vehicular Traffic Cross Slope

Finding

Cross slope at vehicular traffic is not compliant.

On-Site Finding 7.50 percent

Recommendation

Repave the surface to provide a compliant cross slope.

Recommendation Up to 2.08 percent

Costing Info (Estimated)

Repave surface \$1,092



Code Reference ADA 206, 302, CA 11B-403.3

Progress

Record Number	317000	Resolution	None
Progress	Not_Started	Priority	Seven
Actual Date		Projected Date	06/30/2032
Actual Cost	\$0.00	Contractor	
Comments	No Comments		
Assignment	None	New Value	0
Designated Staff			

Pangborn Avenue - Washburn Road To Seaaca Street

Sidewalks - Exterior : Sidewalks , Vehicular Traffic

West Side

Driveway North Of Seaaca Street @ 33.924088108184, -118.113514780998

Sidewalks , Vehicular Traffic : Cross Walks and Detectable Warnings

Finding

There are no detectable warnings where the pedestrian route crosses vehicular traffic.

On-Site Finding Not Found

Recommendation

Provide detectable warnings.

Recommendation See Recommendation

Costing Info (Estimated)

Install compliant detectable warnings \$190



Code Reference ADA 705,CA 11B-705.1.2.5,CA 11B-247.1.2.5

Progress

Record Number	317005	Resolution	None
Progress	Not_Started	Priority	Seven
Actual Date		Projected Date	06/30/2032
Actual Cost	\$0.00	Contractor	
Comments	No Comments	New Value	0
Assignment	None		
Designated Staff			

Pangborn Avenue - Washburn Road To Seaaca Street

Sidewalks - Exterior : Sidewalks

West Side

Driveway North Of Seaaca Street @ 33.924088108184, -118.113514780998

Sidewalks : Vehicular Traffic Cross Slope

Finding

Cross slope at vehicular traffic is not compliant.

On-Site Finding 7.50 percent

Recommendation

Repave the surface to provide a compliant cross slope.

Recommendation Up to 2.08 percent

Costing Info (Estimated)

Repave surface \$1,092



Code Reference ADA 206, 302, CA 11B-403.3

Progress

Record Number	317006	Resolution	None
Progress	Not_Started	Priority	Seven
Actual Date		Projected Date	06/30/2032
Actual Cost	\$0.00	Contractor	
Comments	No Comments		
Assignment	None	New Value	0
Designated Staff			

Pangborn Avenue - Washburn Road To Seaaca Street

Sidewalks - Exterior : Sidewalks , Surface

West Side

Sidewalk North Of Seaaca Street @ 33.922648108682, -118.113490641117

Sidewalks , Surface : Cross Slope

Finding

Sidewalk cross slope is not compliant.

On-Site Finding 6.40 percent for 8.00 feet

Recommendation

Repave the sidewalk surface with the recommended cross slope.

Recommendation Up to 2.08 percent

Costing Info (Estimated)

Repave surface \$1,092



Code Reference ADA 206, 302, CA 11B-403.3

Progress

Record Number	316997	Resolution	None
Progress	Not_Started	Priority	Seven
Actual Date		Projected Date	06/30/2032
Actual Cost	\$0.00	Contractor	
Comments	No Comments		
Assignment	None	New Value	0
Designated Staff			

Pangborn Avenue - Washburn Road To Seaaca Street

Sidewalks - Exterior : Sidewalks , Surface

West Side

Sidewalk North Of Seaaca Street @ 33.923858867234, -118.113522827625

Sidewalks , Surface : Cross Slope

Finding

Sidewalk cross slope is not compliant.

On-Site Finding 3.60 percent for 7.00 feet

Recommendation

Repave the sidewalk surface with the recommended cross slope.

Recommendation Up to 2.08 percent

Costing Info (Estimated)

Repave surface \$1,092



Code Reference ADA 206, 302,CA 11B-403.3

Progress

Record Number	316995	Resolution	None
Progress	Not_Started	Priority	Seven
Actual Date		Projected Date	06/30/2032
Actual Cost	\$0.00	Contractor	
Comments	No Comments	New Value	0
Assignment	None		
Designated Staff			

Pangborn Avenue - Washburn Road To Seaaca Street

Sidewalks - Exterior : Sidewalks , Surface

West Side

Sidewalk North Of Seaaca Street @ 33.923858867234, -118.113522827625

Sidewalks , Surface : Running Slope

Finding

Sidewalk running slope is not compliant.

On-Site Finding 11.00 percent for 7.00 feet

Recommendation

Repave the sidewalk surface with the recommended running slope.

Recommendation Up to 5.00 percent

Costing Info (Estimated)

Repave surface \$1,184



Code Reference ADA 206, 302

Progress

Record Number	316996	Resolution	None
Progress	Not_Started	Priority	Seven
Actual Date		Projected Date	06/30/2032
Actual Cost	\$0.00	Contractor	
Comments	No Comments	New Value	0
Assignment	None		
Designated Staff			

Pangborn Avenue - Washburn Road To Seaaca Street

Sidewalks - Exterior : Sidewalks

West Side @ 33.922069431238, -118.113520145416

Sidewalks : 60X60 Turn Area

Finding

There is no 60X60 turn area at every 200 feet.

On-Site Finding Not Found

Recommendation

Provide a 60X60 turn every 200 feet on the sidewalk.

Recommendation See Recommendation

Costing Info (Estimated)

\$2,400



Code Reference ADA 206, 302

Progress

Record Number	330479	Resolution	None
Progress	Not_Started	Priority	Seven
Actual Date		Projected Date	06/30/2032
Actual Cost	\$0.00	Contractor	
Comments	No Comments		
Assignment	None	New Value	0
Designated Staff			

Pangborn Avenue - Washburn Road To Seaaca Street



Pangborn Avenue - Washburn Road To Seaaca Street

Washburn Road To Seaaca Street
Downey, CA 90424

Date of Inspection
12/7/2016

***Estimated Facility Total: \$18,958**

*Estimated facility total is for estimating purposes only and does not represent total construction, repair totals or design fees.

Prepared By

Disability Access Consultants

(800) 743-7067

Prepared Using

