

Accessibility Survey



City of Downey Allengrove Street - Parrot Avenue to Brock Avenue

Parrot Avenue to Brock Avenue
Downey, CA 90242

Date of Inspection
6/23/2017

Prepared By

Disability Access Consultants

(800) 743-7067

Allengrove Street - Parrot Avenue to Brock Avenue

Sidewalks - Exterior : Sidewalks , Change in Level

North Side

Change in Level East of Parrot Avenue @ 33.962849885666, -118.120473772287

Sidewalks , Change in Level : Change in Level Non Beveled

Finding

There is a change in elevation greater than recommended value.

On-Site Finding 0.87 inches

Recommendation

Ensure that the change in elevation is within the recommended value.

Recommendation Up to 0.25 inches

Costing Info (Estimated)

Remove tripping hazards \$198



Code Reference ADA 206, 302

Progress

Record Number	457250	Resolution	None
Progress	Not_Started	Priority	Two
Actual Date		Projected Date	06/30/2021
Actual Cost	\$0.00	Contractor	
Comments	No Comments	New Value	0
Assignment	None		
Designated Staff			

Allengrove Street - Parrot Avenue to Brock Avenue

Sidewalks - Exterior : Sidewalks , Change in Level

North Side

Change in Level East of Parrot Avenue @ 33.962882142709, -118.120603859425

Sidewalks , Change in Level : Change in Level Non Beveled

Finding

There is a change in elevation greater than recommended value.

On-Site Finding 0.75 inches

Recommendation

Ensure that the change in elevation is within the recommended value.

Recommendation Up to 0.25 inches

Costing Info (Estimated)

Remove tripping hazards \$198



Code Reference ADA 206, 302

Progress

Record Number	457249	Resolution	None
Progress	Not_Started	Priority	Two
Actual Date		Projected Date	06/30/2021
Actual Cost	\$0.00	Contractor	
Comments	No Comments	New Value	0
Assignment	None		
Designated Staff			

Allengrove Street - Parrot Avenue to Brock Avenue

Sidewalks - Exterior : Sidewalks , Change in Level

North Side

Change in Level East of Parrot Avenue @ 33.962887704267, -118.120646774769

Sidewalks , Change in Level : Change in Level Non Beveled

Finding

There is a change in elevation greater than recommended value.

On-Site Finding 0.62 inches

Recommendation

Ensure that the change in elevation is within the recommended value.

Recommendation Up to 0.25 inches

Costing Info (Estimated)

Remove tripping hazards \$198



Code Reference ADA 206, 302

Progress

Record Number	457248	Resolution	None
Progress	Not_Started	Priority	Two
Actual Date		Projected Date	06/30/2021
Actual Cost	\$0.00	Contractor	
Comments	No Comments	New Value	0
Assignment	None		
Designated Staff			

Allengrove Street - Parrot Avenue to Brock Avenue

Sidewalks - Exterior : Sidewalks

North Side

Sidewalk East of Parrot Avenue @ 33.962820965548, -118.120421469212

Sidewalks : Missing Sidewalk

Finding

Section of sidewalk is missing and consists of dirt, grass or gravel.

On-Site Finding 272.00 feet

Recommendation

Provide a compliant sidewalk for the missing section.

Recommendation See Recommendation

Costing Info (Estimated)

\$1,260



Code Reference ADA 206, 302,CA 11B-302,CA 11B-206

Progress

Record Number	457247	Resolution	None
Progress	Not_Started	Priority	Five
Actual Date		Projected Date	06/30/2025
Actual Cost	\$0.00	Contractor	
Comments	No Comments	New Value	0
Assignment	None		
Designated Staff			

Allengrove Street - Parrot Avenue to Brock Avenue

Sidewalks - Exterior : Sidewalks

South Side

Sidewalk West of Brock Avenue @ 33.962205854555, -118.119941353798

Sidewalks : Missing Sidewalk

Finding

Section of sidewalk is missing and consists of dirt, grass or gravel.

On-Site Finding 257.00 feet

Recommendation

Provide a compliant sidewalk for the missing section.

Recommendation See Recommendation

Costing Info (Estimated)

\$1,260



Code Reference ADA 206, 302,CA 11B-302,CA 11B-206

Progress

Record Number	457251	Resolution	None
Progress	Not_Started	Priority	Five
Actual Date		Projected Date	06/30/2025
Actual Cost	\$0.00	Contractor	
Comments	No Comments	New Value	0
Assignment	None		
Designated Staff			

Allengrove Street - Parrot Avenue to Brock Avenue



Allengrove Street - Parrot Avenue to Brock Avenue

Parrot Avenue to Brock Avenue
Downey, CA 90242

Date of Inspection
6/23/2017

***Estimated Facility Total: \$3,114**

*Estimated facility total is for estimating purposes only and does not represent total construction, repair totals or design fees.

Prepared By

Disability Access Consultants

(800) 743-7067

Prepared Using



Accessibility Survey



City of Downey Allengrove Street - Tweedy Lane to Danvers Street

Tweedy Lane to Danvers Street
Downey, CA 90240

Date of Inspection
2/4/2017

Prepared By

Disability Access Consultants

(800) 743-7067

Allengrove Street - Tweedy Lane to Danvers Street

Sidewalks - Exterior : Sidewalks , Change in Level

North Side

Change In Level West Of Lowman Avenue @ 33.965309172044, -118.122948110104

Sidewalks , Change in Level : Change in Level Non Beveled

Finding

There is a change in elevation greater than recommended value.

On-Site Finding 0.50 inches

Recommendation

Ensure that the change in elevation is within the recommended value.

Recommendation Up to 0.25 inches

Costing Info (Estimated)

Remove tripping hazards \$198



Code Reference ADA 206, 302

Progress

Record Number	352433	Resolution	None
Progress	Not_Started	Priority	Two
Actual Date		Projected Date	06/30/2021
Actual Cost	\$0.00	Contractor	
Comments	No Comments	New Value	0
Assignment	None		
Designated Staff			

Allengrove Street - Tweedy Lane to Danvers Street

Sidewalks - Exterior : Sidewalks , Change in Level

North Side

Change In Level West Of Samoline Avenue @ 33.964638464629, -118.122246924

Sidewalks , Change in Level : Change in Level Non Beveled

Finding

There is a change in elevation greater than recommended value.

On-Site Finding 0.50 inches

Recommendation

Ensure that the change in elevation is within the recommended value.

Recommendation Up to 0.25 inches

Costing Info (Estimated)

Remove tripping hazards \$198



Code Reference ADA 206, 302

Progress

Record Number	352432	Resolution	None
Progress	Not_Started	Priority	Two
Actual Date		Projected Date	06/30/2021
Actual Cost	\$0.00	Contractor	
Comments	No Comments	New Value	0
Assignment	None		
Designated Staff			

Allengrove Street - Tweedy Lane to Danvers Street

Sidewalks - Exterior : Sidewalks , Change in Level

North Side

Change In Level West Of Samoline Avenue @ 33.964651812092, -118.122274875641

Sidewalks , Change in Level : Change in Level Non Beveled

Finding

There is a change in elevation greater than recommended value.

On-Site Finding 0.75 inches

Recommendation

Ensure that the change in elevation is within the recommended value.

Recommendation Up to 0.25 inches

Costing Info (Estimated)

Remove tripping hazards \$198



Code Reference ADA 206, 302

Progress

Record Number	352430	Resolution	None
Progress	Not_Started	Priority	Two
Actual Date		Projected Date	06/30/2021
Actual Cost	\$0.00	Contractor	
Comments	No Comments	New Value	0
Assignment	None		
Designated Staff			

Allengrove Street - Tweedy Lane to Danvers Street

Sidewalks - Exterior : Sidewalks , Change in Level

North Side

Change In Level West Of Samoline Avenue @ 33.964709651073, -118.122325837612

Sidewalks , Change in Level : Change in Level Non Beveled

Finding

There is a change in elevation greater than recommended value.

On-Site Finding 1.25 inches

Recommendation

Ensure that the change in elevation is within the recommended value.

Recommendation Up to 0.25 inches

Costing Info (Estimated)

Remove tripping hazards \$198



Code Reference ADA 206, 302

Progress

Record Number	352431	Resolution	None
Progress	Not_Started	Priority	Two
Actual Date		Projected Date	06/30/2020
Actual Cost	\$0.00	Contractor	
Comments	No Comments	New Value	0
Assignment	None		
Designated Staff			

Allengrove Street - Tweedy Lane to Danvers Street

Sidewalks - Exterior : Sidewalks , Change in Level

North Side

Change In Level West Of Samoline Avenue @ 33.964747468847, -118.122363388538

Sidewalks , Change in Level : Change in Level Non Beveled

Finding

There is a change in elevation greater than recommended value.

On-Site Finding 0.62 inches

Recommendation

Ensure that the change in elevation is within the recommended value.

Recommendation Up to 0.25 inches

Costing Info (Estimated)

Remove tripping hazards \$198



Code Reference ADA 206, 302

Progress

Record Number	352439	Resolution	None
Progress	Not_Started	Priority	Two
Actual Date		Projected Date	06/30/2021
Actual Cost	\$0.00	Contractor	
Comments	No Comments		
Assignment	None	New Value	0
Designated Staff			

Allengrove Street - Tweedy Lane to Danvers Street

Sidewalks - Exterior : Sidewalks , Change in Level

North Side

Change In Level West Of Samoline Avenue @ 33.964771939163, -118.122382164001

Sidewalks , Change in Level : Change in Level Non Beveled

Finding

There is a change in elevation greater than recommended value.

On-Site Finding 0.50 inches

Recommendation

Ensure that the change in elevation is within the recommended value.

Recommendation Up to 0.25 inches

Costing Info (Estimated)

Remove tripping hazards \$198



Code Reference ADA 206, 302

Progress

Record Number	352434	Resolution	None
Progress	Not_Started	Priority	Two
Actual Date		Projected Date	06/30/2021
Actual Cost	\$0.00	Contractor	
Comments	No Comments	New Value	0
Assignment	None		
Designated Staff			

Allengrove Street - Tweedy Lane to Danvers Street

Sidewalks - Exterior : Sidewalks , Change in Level

North Side

Lowman Avenue North Crossing @ 33.965161238690, -118.122803270817

Sidewalks , Change in Level : Change in Level Non Beveled

Finding

There is a change in elevation greater than recommended value.

On-Site Finding 0.50 inches

Recommendation

Ensure that the change in elevation is within the recommended value.

Recommendation Up to 0.25 inches

Costing Info (Estimated)

Remove tripping hazards \$198



Code Reference ADA 206, 302

Progress

Record Number	352435	Resolution	None
Progress	Not_Started	Priority	Two
Actual Date		Projected Date	06/30/2021
Actual Cost	\$0.00	Contractor	
Comments	No Comments	New Value	0
Assignment	None		
Designated Staff			

Allengrove Street - Tweedy Lane to Danvers Street

Sidewalks - Exterior : Sidewalks , Change in Level

North Side

Samoline Avenue North Crossing @ 33.964525011110, -118.122135400772

Sidewalks , Change in Level : Change in Level Non Beveled

Finding

There is a change in elevation greater than recommended value.

On-Site Finding 1.00 inches

Recommendation

Ensure that the change in elevation is within the recommended value.

Recommendation Up to 0.25 inches

Costing Info (Estimated)

Remove tripping hazards \$198



Code Reference ADA 206, 302

Progress

Record Number	352428	Resolution	None
Progress	Not_Started	Priority	Two
Actual Date		Projected Date	06/30/2021
Actual Cost	\$0.00	Contractor	
Comments	No Comments	New Value	0
Assignment	None		
Designated Staff			

Allengrove Street - Tweedy Lane to Danvers Street

Sidewalks - Exterior : Sidewalks , Change in Level

South Side

Change In Level East Of Tweedy Lane @ 33.963966639628, -118.121765255928

Sidewalks , Change in Level : Change in Level Non Beveled

Finding

There is a change in elevation greater than recommended value.

On-Site Finding 0.62 inches

Recommendation

Ensure that the change in elevation is within the recommended value.

Recommendation Up to 0.25 inches

Costing Info (Estimated)

Remove tripping hazards \$198



Code Reference ADA 206, 302

Progress

Record Number	352418	Resolution	None
Progress	Not_Started	Priority	Two
Actual Date		Projected Date	06/30/2021
Actual Cost	\$0.00	Contractor	
Comments	No Comments	New Value	0
Assignment	None		
Designated Staff			

Allengrove Street - Tweedy Lane to Danvers Street

Sidewalks - Exterior : Sidewalks , Change in Level

South Side

Change In Level East Of Tweedy Lane @ 33.964244713533, -118.122049570084

Sidewalks , Change in Level : Change in Level Non Beveled

Finding

There is a change in elevation greater than recommended value.

On-Site Finding 0.50 inches

Recommendation

Ensure that the change in elevation is within the recommended value.

Recommendation Up to 0.25 inches

Costing Info (Estimated)

Remove tripping hazards \$198



Code Reference ADA 206, 302

Progress

Record Number	352414	Resolution	None
Progress	Not_Started	Priority	Two
Actual Date		Projected Date	06/30/2021
Actual Cost	\$0.00	Contractor	
Comments	No Comments	New Value	0
Assignment	None		
Designated Staff			

Allengrove Street - Tweedy Lane to Danvers Street

Sidewalks - Exterior : Sidewalks , Change in Level

South Side

Change In Level East Of Tweedy Lane @ 33.964493866981, -118.122328519821

Sidewalks , Change in Level : Change in Level Non Beveled

Finding

There is a change in elevation greater than recommended value.

On-Site Finding 0.62 inches

Recommendation

Ensure that the change in elevation is within the recommended value.

Recommendation Up to 0.25 inches

Costing Info (Estimated)

Remove tripping hazards \$198



Code Reference ADA 206, 302

Progress

Record Number	352420	Resolution	None
Progress	Not_Started	Priority	Two
Actual Date		Projected Date	06/30/2021
Actual Cost	\$0.00	Contractor	
Comments	No Comments	New Value	0
Assignment	None		
Designated Staff			

Allengrove Street - Tweedy Lane to Danvers Street

Sidewalks - Exterior : Sidewalks , Change in Level

South Side

Change In Level East Of Tweedy Lane @ 33.964607320541, -118.122435808182

Sidewalks , Change in Level : Change in Level Non Beveled

Finding

There is a change in elevation greater than recommended value.

On-Site Finding 0.62 inches

Recommendation

Ensure that the change in elevation is within the recommended value.

Recommendation Up to 0.25 inches

Costing Info (Estimated)

Remove tripping hazards \$198



Code Reference ADA 206, 302

Progress

Record Number	352415	Resolution	None
Progress	Not_Started	Priority	Two
Actual Date		Projected Date	06/30/2021
Actual Cost	\$0.00	Contractor	
Comments	No Comments	New Value	0
Assignment	None		
Designated Staff			

Allengrove Street - Tweedy Lane to Danvers Street

Sidewalks - Exterior : Sidewalks , Change in Level

South Side

Change In Level East Of Tweedy Lane @ 33.965058908702, -118.122913241386

Sidewalks , Change in Level : Change in Level Non Beveled

Finding

There is a change in elevation greater than recommended value.

On-Site Finding 0.50 inches

Recommendation

Ensure that the change in elevation is within the recommended value.

Recommendation Up to 0.25 inches

Costing Info (Estimated)

Remove tripping hazards \$198



Code Reference ADA 206, 302

Progress

Record Number	352416	Resolution	None
Progress	Not_Started	Priority	Two
Actual Date		Projected Date	06/30/2021
Actual Cost	\$0.00	Contractor	
Comments	No Comments		
Assignment	None	New Value	0
Designated Staff			

Allengrove Street - Tweedy Lane to Danvers Street

Sidewalks - Exterior : Sidewalks , Change in Level

South Side

Change In Level East Of Tweedy Lane @ 33.965163463254, -118.123009800911

Sidewalks , Change in Level : Change in Level Non Beveled

Finding

There is a change in elevation greater than recommended value.

On-Site Finding 0.50 inches

Recommendation

Ensure that the change in elevation is within the recommended value.

Recommendation Up to 0.25 inches

Costing Info (Estimated)

Remove tripping hazards \$198



Code Reference ADA 206, 302

Progress

Record Number	352417	Resolution	None
Progress	Not_Started	Priority	Two
Actual Date		Projected Date	06/30/2021
Actual Cost	\$0.00	Contractor	
Comments	No Comments	New Value	0
Assignment	None		
Designated Staff			

Allengrove Street - Tweedy Lane to Danvers Street

Sidewalks - Exterior : Sidewalks , Change in Level

North Side

Change In Level West Of Danvers Street @ 33.964389311605, -118.121985197067

Sidewalks , Change in Level : Change in Level Non Beveled

Finding

There is a change in elevation greater than recommended value.

On-Site Finding 0.37 inches

Recommendation

Ensure that the change in elevation is within the recommended value.

Recommendation Up to 0.25 inches

Costing Info (Estimated)

Remove tripping hazards \$198



Code Reference ADA 206, 302

Progress

Record Number	352429	Resolution	None
Progress	Not_Started	Priority	Three
Actual Date		Projected Date	12/31/2022
Actual Cost	\$0.00	Contractor	
Comments	No Comments	New Value	0
Assignment	None		
Designated Staff			

Allengrove Street - Tweedy Lane to Danvers Street

Sidewalks - Exterior : Sidewalks , Change in Level

North Side

Change In Level West Of Lowman Avenue @ 33.965280252762, -118.122934699059

Sidewalks , Change in Level : Change in Level Non Beveled

Finding

There is a change in elevation greater than recommended value.

On-Site Finding 0.37 inches

Recommendation

Ensure that the change in elevation is within the recommended value.

Recommendation Up to 0.25 inches

Costing Info (Estimated)

Remove tripping hazards \$198



Code Reference ADA 206, 302

Progress

Record Number	352437	Resolution	None
Progress	Not_Started	Priority	Three
Actual Date		Projected Date	12/31/2022
Actual Cost	\$0.00	Contractor	
Comments	No Comments	New Value	0
Assignment	None		
Designated Staff			

Allengrove Street - Tweedy Lane to Danvers Street

Sidewalks - Exterior : Sidewalks , Change in Level

North Side

Change In Level West Of Lowman Avenue @ 33.965348101831, -118.122995048761

Sidewalks , Change in Level : Change in Level Non Beveled

Finding

There is a change in elevation greater than recommended value.

On-Site Finding 0.37 inches

Recommendation

Ensure that the change in elevation is within the recommended value.

Recommendation Up to 0.25 inches

Costing Info (Estimated)

Remove tripping hazards \$198



Code Reference ADA 206, 302

Progress

Record Number	352426	Resolution	None
Progress	Not_Started	Priority	Three
Actual Date		Projected Date	12/31/2022
Actual Cost	\$0.00	Contractor	
Comments	No Comments	New Value	0
Assignment	None		
Designated Staff			

Allengrove Street - Tweedy Lane to Danvers Street

Sidewalks - Exterior : Sidewalks , Change in Level

North Side

Change In Level West Of Samoline Avenue @ 33.964771939163, -118.122382164001

Sidewalks , Change in Level : Change in Level Non Beveled

Finding

There is a change in elevation greater than recommended value.

On-Site Finding 0.37 inches

Recommendation

Ensure that the change in elevation is within the recommended value.

Recommendation Up to 0.25 inches

Costing Info (Estimated)

Remove tripping hazards \$198



Code Reference ADA 206, 302

Progress

Record Number	352436	Resolution	None
Progress	Not_Started	Priority	Three
Actual Date		Projected Date	12/31/2022
Actual Cost	\$0.00	Contractor	
Comments	No Comments	New Value	0
Assignment	None		
Designated Staff			

Allengrove Street - Tweedy Lane to Danvers Street

Sidewalks - Exterior : Sidewalks , Change in Level

South Side

Change In Level East Of Tweedy Lane @ 33.964020029888, -118.121832311153

Sidewalks , Change in Level : Change in Level Non Beveled

Finding

There is a change in elevation greater than recommended value.

On-Site Finding 0.37 inches

Recommendation

Ensure that the change in elevation is within the recommended value.

Recommendation Up to 0.25 inches

Costing Info (Estimated)

Remove tripping hazards \$198



Code Reference ADA 206, 302

Progress

Record Number	352421	Resolution	None
Progress	Not_Started	Priority	Three
Actual Date		Projected Date	12/31/2022
Actual Cost	\$0.00	Contractor	
Comments	No Comments	New Value	0
Assignment	None		
Designated Staff			

Allengrove Street - Tweedy Lane to Danvers Street

Sidewalks - Exterior : Sidewalks , Change in Level

South Side

Change In Level East Of Tweedy Lane @ 33.964358167426, -118.122172951698

Sidewalks , Change in Level : Change in Level Non Beveled

Finding

There is a change in elevation greater than recommended value.

On-Site Finding 0.37 inches

Recommendation

Ensure that the change in elevation is within the recommended value.

Recommendation Up to 0.25 inches

Costing Info (Estimated)

Remove tripping hazards \$198



Code Reference ADA 206, 302

Progress

Record Number	352413	Resolution	None
Progress	Not_Started	Priority	Three
Actual Date		Projected Date	12/31/2022
Actual Cost	\$0.00	Contractor	
Comments	No Comments		
Assignment	None	New Value	0
Designated Staff			

Allengrove Street - Tweedy Lane to Danvers Street

Sidewalks - Exterior : Sidewalks , Change in Level

South Side

Change In Level East Of Tweedy Lane @ 33.964725223100, -118.122553825378

Sidewalks , Change in Level : Change in Level Non Beveled

Finding

There is a change in elevation greater than recommended value.

On-Site Finding 0.37 inches

Recommendation

Ensure that the change in elevation is within the recommended value.

Recommendation Up to 0.25 inches

Costing Info (Estimated)

Remove tripping hazards \$198



Code Reference ADA 206, 302

Progress

Record Number	352419	Resolution	None
Progress	Not_Started	Priority	Three
Actual Date		Projected Date	12/31/2022
Actual Cost	\$0.00	Contractor	
Comments	No Comments		
Assignment	None	New Value	0
Designated Staff			

Allengrove Street - Tweedy Lane to Danvers Street

Curb Ramps - Exterior : Curb Ramp

Northwest Corner Of Danvers Street @ 33.963973313412, - 118.121531903744

Curb Ramp : No Detectable Warnings

Finding

The curb ramp does not provide a detectable warning surface which includes truncated domes.

On-Site Finding Not Found

Recommendation

Provide compliant detectable warnings to surface.

Recommendation See Recommendation

Costing Info (Estimated)

Provide detectable warning to surface \$248



Code Reference CA 11B-406.5.12

Progress

Record Number	352404	Resolution	None
Progress	Not_Started	Priority	Five
Actual Date		Projected Date	06/30/2025
Actual Cost	\$0.00	Contractor	
Comments	No Comments	New Value	0
Assignment	None		
Designated Staff			

Allengrove Street - Tweedy Lane to Danvers Street

Curb Ramps - Exterior : Curb Ramp

Northwest Corner Of Danvers Street @ 33.963973313412, - 118.121531903744

Curb Ramp : Curb Ramp Slope

Finding

The running slope is greater than allowed.

On-Site Finding 10.00 percent

Recommendation

Provide a compliant curb ramp.

Recommendation Up to 8.33 percent

Costing Info (Estimated)

Install curb ramp \$1,300



Code Reference ADA 406, 406.1, 405.2, CA 11B-406

Progress

Record Number	352405	Resolution	None
Progress	Not_Started	Priority	Five
Actual Date		Projected Date	06/30/2025
Actual Cost	\$0.00	Contractor	
Comments	No Comments	New Value	0
Assignment	None		
Designated Staff			

Allengrove Street - Tweedy Lane to Danvers Street

Curb Ramps - Exterior : Curb Ramp

Northwest Corner Of Danvers Street @ 33.963973313412, -118.121531903744

Curb Ramp : Side Flare Slope

Finding

The slope of the curb ramp side flare is greater than allowed.

On-Site Finding 19.60 percent

Recommendation

Provide curb ramp side flares with a compliant slope.

Recommendation Up to 10.00 percent

Costing Info (Estimated)

Install flared sides \$1,300



Code Reference ADA 406, 406.3, CA 11B-406.2.2

Progress

Record Number	352406	Resolution	None
Progress	Not_Started	Priority	Five
Actual Date		Projected Date	06/30/2025
Actual Cost	\$0.00	Contractor	
Comments	No Comments		
Assignment	None	New Value	0
Designated Staff			

Allengrove Street - Tweedy Lane to Danvers Street

Curb Ramps - Exterior : Curb Ramp , Landings and Transitions

Northwest Corner Of Danvers Street @ 33.963973313412, - 118.121531903744

Top Landing

Curb Ramp , Landings and Transitions : Top Landing Slope

Finding

The slope at the top landing is greater than allowed.

On-Site Finding 4.50 percent

Recommendation

Provide a top landing surface that does not exceed the maximum slope and cross slope. Provide a sufficient maneuvering clearance that does not accumulate water.

Recommendation Up to 2.08 percent

Costing Info (Estimated)

Provide compliant landing \$1,260



Code Reference ADA 402, 406.4, 403.3, 406.1, CA 11B-406.5.3

Progress

Record Number	352407	Resolution	None
Progress	Not_Started	Priority	Five
Actual Date		Projected Date	06/30/2025
Actual Cost	\$0.00	Contractor	
Comments	No Comments		
Assignment	None	New Value	0
Designated Staff			

Allengrove Street - Tweedy Lane to Danvers Street

Curb Ramps - Exterior : Curb Ramp

Southwest Corner Of Danvers Street @ 33.963842062223, -118.121641874313

Curb Ramp : No Detectable Warnings

Finding

The curb ramp does not provide a detectable warning surface which includes truncated domes.

On-Site Finding Not Found

Recommendation

Provide compliant detectable warnings to surface.

Recommendation See Recommendation

Costing Info (Estimated)

Provide detectable warning to surface \$248



Code Reference CA 11B-406.5.12

Progress

Record Number	352441	Resolution	None
Progress	Not_Started	Priority	Five
Actual Date		Projected Date	06/30/2025
Actual Cost	\$0.00	Contractor	
Comments	No Comments	New Value	0
Assignment	None		
Designated Staff			

Allengrove Street - Tweedy Lane to Danvers Street

Curb Ramps - Exterior : Curb Ramp

Southwest Corner Of Danvers Street @ 33.963842062223, - 118.121641874313

Curb Ramp : Curb Ramp Slope

Finding

The running slope is greater than allowed.

On-Site Finding 10.50 percent

Recommendation

Provide a compliant curb ramp.

Recommendation Up to 8.33 percent

Costing Info (Estimated)

Install curb ramp \$1,300



Code Reference ADA 406, 406.1, 405.2, CA 11B-406

Progress

Record Number	352442	Resolution	None
Progress	Not_Started	Priority	Five
Actual Date		Projected Date	06/30/2025
Actual Cost	\$0.00	Contractor	
Comments	No Comments	New Value	0
Assignment	None		
Designated Staff			

Allengrove Street - Tweedy Lane to Danvers Street

Curb Ramps - Exterior : Curb Ramp

Southwest Corner Of Danvers Street @ 33.963842062223, - 118.121641874313

Curb Ramp : Side Flare Slope

Finding

The slope of the curb ramp side flare is greater than allowed.

On-Site Finding 16.30 percent

Recommendation

Provide curb ramp side flares with a compliant slope.

Recommendation Up to 10.00 percent

Costing Info (Estimated)

Install flared sides \$1,300



Code Reference ADA 406, 406.3, CA 11B-406.2.2

Progress

Record Number	352443	Resolution	None
Progress	Not_Started	Priority	Five
Actual Date		Projected Date	06/30/2025
Actual Cost	\$0.00	Contractor	
Comments	No Comments	New Value	0
Assignment	None		
Designated Staff			

Allengrove Street - Tweedy Lane to Danvers Street

Curb Ramps - Exterior : Curb Ramp

Southwest Corner Of Danvers Street @ 33.963842062223, - 118.121641874313

Bottom Landing

Curb Ramp : Bottom Landing Slope

Finding

The bottom landing of the curb ramp is on the street, and the slope of the bottom landing is not compliant.

On-Site Finding 6.50 percent

Recommendation

Ensure the bottom landing slope is compliant and provides a smooth transition.

Recommendation Up to 5.00 percent

Costing Info (Estimated)

Repave landing \$1,260



Code Reference ADA 406, 406.2, CA 11B-406.5.8

Progress

Record Number	352444	Resolution	None
Progress	Not_Started	Priority	Five
Actual Date		Projected Date	06/30/2025
Actual Cost	\$0.00	Contractor	
Comments	No Comments	New Value	0
Assignment	None		
Designated Staff			

Allengrove Street - Tweedy Lane to Danvers Street

Curb Ramps - Exterior : Curb Ramp , Landings And Transitions

Southwest Corner Of Danvers Street @ 33.963842062223, - 118.121641874313

Bottom Landing

Finding

The transition from the bottom of the curb ramp to the walk, gutter, or street is abrupt.

On-Site Finding 0.62 inches

Recommendation

Patch the transition area at the bottom of the curb ramp so that the transition is flush and free of abrupt changes.

Recommendation Up to 0.50 inches

Costing Info (Estimated)

Patch lip at curb ramp \$255

Curb Ramp , Landings And Transitions : Bottom Landing Change in Level



Code Reference ADA 302, 303, 406.2, 303.1

Progress

Record Number	352445	Resolution	None
Progress	Not_Started	Priority	Five
Actual Date		Projected Date	06/30/2025
Actual Cost	\$0.00	Contractor	
Comments	No Comments		
Assignment	None	New Value	0
Designated Staff			

Allengrove Street - Tweedy Lane to Danvers Street

Curb Ramps - Exterior : Curb Ramp , Landings and Transitions

Southwest Corner Of Danvers Street @ 33.963842062223, - 118.121641874313

Top Landing

Curb Ramp , Landings and Transitions : Top Landing Slope

Finding

The slope at the top landing is greater than allowed.

On-Site Finding 2.90 percent

Recommendation

Provide a top landing surface that does not exceed the maximum slope and cross slope. Provide a sufficient maneuvering clearance that does not accumulate water.

Recommendation Up to 2.08 percent

Costing Info (Estimated)

Provide compliant landing \$1,260



Code Reference ADA 402, 406.4, 403.3, 406.1, CA 11B-406.5.3

Progress

Record Number	352446	Resolution	None
Progress	Not_Started	Priority	Five
Actual Date		Projected Date	06/30/2025
Actual Cost	\$0.00	Contractor	
Comments	No Comments		
Assignment	None	New Value	0
Designated Staff			

Allengrove Street - Tweedy Lane to Danvers Street

Sidewalks - Exterior : Sidewalks , Hazards & Gratings

North Side

Northeast Corner Of Tweedy Lane @ 33.965699581387, -118.123349100351

Sidewalks , Hazards & Gratings : Curb is on Path of Travel

Finding

There is a curb on the designated path of travel.

On-Site Finding Not Compliant

Recommendation

Provide a compliant curb ramp.

Recommendation See Recommendation

Costing Info (Estimated)

Install curb ramp \$2,500



Code Reference ADA 402, 303, 406, 403.4, 303.4

Progress

Record Number	352427	Resolution	None
Progress	Not_Started	Priority	Five
Actual Date		Projected Date	06/30/2025
Actual Cost	\$0.00	Contractor	
Comments	No Comments	New Value	0
Assignment	None		
Designated Staff			

Allengrove Street - Tweedy Lane to Danvers Street

Sidewalks - Exterior : Sidewalks , Hazards & Gratings

North Side

Northwest Corner Of Samoline Avenue @ 33.964600646806, -118.122189044952

Sidewalks , Hazards & Gratings : Curb is on Path of Travel

Finding

There is a curb on the designated path of travel.

On-Site Finding Not Compliant

Recommendation

Provide a compliant curb ramp.

Recommendation See Recommendation

Costing Info (Estimated)

Install curb ramp \$2,500



Code Reference ADA 402, 303, 406, 403.4, 303.4

Progress

Record Number	352438	Resolution	None
Progress	Not_Started	Priority	Five
Actual Date		Projected Date	06/30/2025
Actual Cost	\$0.00	Contractor	
Comments	No Comments	New Value	0
Assignment	None		
Designated Staff			

Allengrove Street - Tweedy Lane to Danvers Street

Sidewalks - Exterior : Sidewalks

North Side

Samoline Avenue North Crossing @ 33.964525011110, -118.122135400772

Sidewalks : Vehicular Traffic Cross Slope

Finding

Cross slope at vehicular traffic is not compliant.

On-Site Finding 2.60 percent

Recommendation

Repave the surface to provide a compliant cross slope.

Recommendation Up to 2.08 percent

Costing Info (Estimated)

Repave surface \$1,092



Code Reference ADA 206, 302,CA 11B-403.3

Progress

Record Number	352440	Resolution	None
Progress	Not_Started	Priority	Five
Actual Date		Projected Date	06/30/2025
Actual Cost	\$0.00	Contractor	
Comments	No Comments		
Assignment	None	New Value	0
Designated Staff			

Allengrove Street - Tweedy Lane to Danvers Street

Sidewalks - Exterior : Sidewalks , Surface

North Side

Sidewalk West Of Danvers Street @ 33.963973313412, -118.121531903744

Sidewalks , Surface : Cross Slope

Finding

Sidewalk cross slope is not compliant.

On-Site Finding 2.90 percent for 145.00 feet

Recommendation

Repave the sidewalk surface with the recommended cross slope.

Recommendation Up to 2.08 percent

Costing Info (Estimated)

Repave surface \$1,092



Code Reference ADA 206, 302,CA 11B-403.3

Progress

Record Number	352423	Resolution	None
Progress	Not_Started	Priority	Five
Actual Date		Projected Date	06/30/2025
Actual Cost	\$0.00	Contractor	
Comments	No Comments		
Assignment	None	New Value	0
Designated Staff			

Allengrove Street - Tweedy Lane to Danvers Street

Sidewalks - Exterior : Sidewalks , Surface

North Side

Sidewalk West Of Lowman Avenue @ 33.965422624516, -118.123083561659

Sidewalks , Surface : Cross Slope

Finding

Sidewalk cross slope is not compliant.

On-Site Finding 4.30 percent for 120.00 feet

Recommendation

Repave the sidewalk surface with the recommended cross slope.

Recommendation Up to 2.08 percent

Costing Info (Estimated)

Repave surface \$1,092



Code Reference ADA 206, 302,CA 11B-403.3

Progress

Record Number	352425	Resolution	None
Progress	Not_Started	Priority	Five
Actual Date		Projected Date	06/30/2025
Actual Cost	\$0.00	Contractor	
Comments	No Comments	New Value	0
Assignment	None		
Designated Staff			

Allengrove Street - Tweedy Lane to Danvers Street

Sidewalks - Exterior : Sidewalks , Surface

North Side

Sidewalk West Of Samoline Avenue @ 33.964947680313, -118.122569918633

Sidewalks , Surface : Cross Slope

Finding

Sidewalk cross slope is not compliant.

On-Site Finding 3.00 percent for 76.00 feet

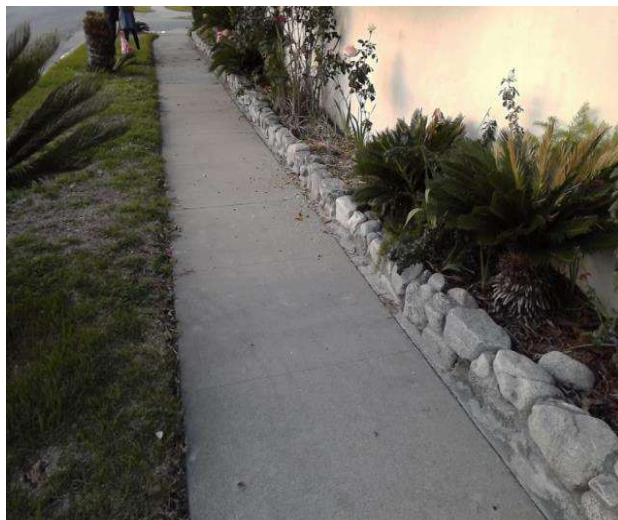
Recommendation

Repave the sidewalk surface with the recommended cross slope.

Recommendation Up to 2.08 percent

Costing Info (Estimated)

Repave surface \$1,092



Code Reference ADA 206, 302,CA 11B-403.3

Progress

Record Number	352424	Resolution	None
Progress	Not_Started	Priority	Five
Actual Date		Projected Date	06/30/2025
Actual Cost	\$0.00	Contractor	
Comments	No Comments		
Assignment	None	New Value	0
Designated Staff			

Allengrove Street - Tweedy Lane to Danvers Street

Sidewalks - Exterior : Sidewalks

North Side @ 33.963973313412, -118.121531903744

Sidewalks : 60X60 Turn Area

Finding

There is no 60X60 turn area at every 200 feet.

On-Site Finding Not Found

Recommendation

Provide a 60X60 turn every 200 feet on the sidewalk.

Recommendation See Recommendation

Costing Info (Estimated)

\$2,400



Code Reference ADA 206, 302

Progress

Record Number	352422	Resolution	None
Progress	Not_Started	Priority	Five
Actual Date		Projected Date	06/30/2025
Actual Cost	\$0.00	Contractor	
Comments	No Comments		
Assignment	None	New Value	0
Designated Staff			

Allengrove Street - Tweedy Lane to Danvers Street

Sidewalks - Exterior : Sidewalks , Surface

South Side

Sidewalk East Of Tweedy Lane @ 33.964244713533, -118.122049570084

Sidewalks , Surface : Cross Slope

Finding

Sidewalk cross slope is not compliant.

On-Site Finding 3.50 percent for 190.00 feet

Recommendation

Repave the sidewalk surface with the recommended cross slope.

Recommendation Up to 2.08 percent

Costing Info (Estimated)

Repave surface \$1,092



Code Reference ADA 206, 302,CA 11B-403.3

Progress

Record Number	352409	Resolution	None
Progress	Not_Started	Priority	Five
Actual Date		Projected Date	06/30/2025
Actual Cost	\$0.00	Contractor	
Comments	No Comments	New Value	0
Assignment	None		
Designated Staff			

Allengrove Street - Tweedy Lane to Danvers Street

Sidewalks - Exterior : Sidewalks , Surface

South Side

Sidewalk East Of Tweedy Lane @ 33.964914311768, -118.122752308846

Sidewalks , Surface : Cross Slope

Finding

Sidewalk cross slope is not compliant.

On-Site Finding 3.70 percent for 50.00 feet

Recommendation

Repave the sidewalk surface with the recommended cross slope.

Recommendation Up to 2.08 percent

Costing Info (Estimated)

Repave surface \$1,092



Code Reference ADA 206, 302,CA 11B-403.3

Progress

Record Number	352411	Resolution	None
Progress	Not_Started	Priority	Five
Actual Date		Projected Date	06/30/2025
Actual Cost	\$0.00	Contractor	
Comments	No Comments		
Assignment	None	New Value	0
Designated Staff			

Allengrove Street - Tweedy Lane to Danvers Street

Sidewalks - Exterior : Sidewalks , Surface

South Side

Sidewalk East Of Tweedy Lane @ 33.965550536436, -118.123438954353

Sidewalks , Surface : Cross Slope

Finding

Sidewalk cross slope is not compliant.

On-Site Finding 2.80 percent for 15.00 feet

Recommendation

Repave the sidewalk surface with the recommended cross slope.

Recommendation Up to 2.08 percent

Costing Info (Estimated)

Repave surface \$1,092



Code Reference ADA 206, 302,CA 11B-403.3

Progress

Record Number	352410	Resolution	None
Progress	Not_Started	Priority	Five
Actual Date		Projected Date	06/30/2025
Actual Cost	\$0.00	Contractor	
Comments	No Comments		
Assignment	None	New Value	0
Designated Staff			

Allengrove Street - Tweedy Lane to Danvers Street

Sidewalks - Exterior : Sidewalks , Hazards & Gratings

South Side

Southeast Corner Of Tweedy Lane @ 33.965550536436, -118.123438954353

Sidewalks , Hazards & Gratings : Curb is on Path of Travel

Finding

There is a curb on the designated path of travel.

On-Site Finding Not Compliant

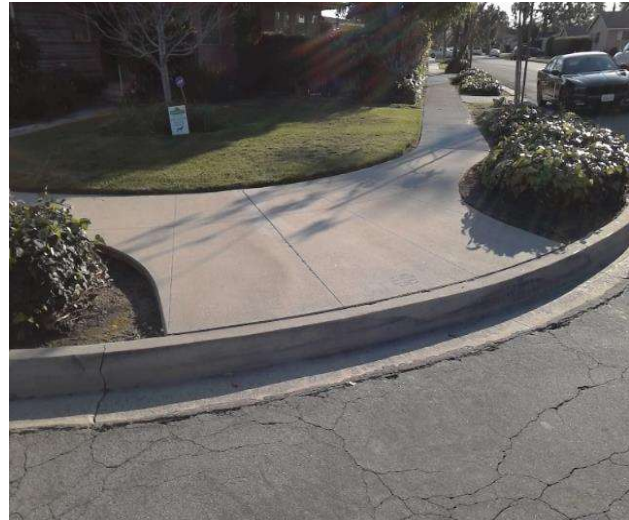
Recommendation

Provide a compliant curb ramp.

Recommendation See Recommendation

Costing Info (Estimated)

Install curb ramp \$2,500



Code Reference ADA 402, 303, 406, 403.4, 303.4

Progress

Record Number	352412	Resolution	None
Progress	Not_Started	Priority	Five
Actual Date		Projected Date	06/30/2025
Actual Cost	\$0.00	Contractor	
Comments	No Comments	New Value	0
Assignment	None		
Designated Staff			

Allengrove Street - Tweedy Lane to Danvers Street

Sidewalks - Exterior : Sidewalks

South Side @ 33.965550536436, -118.123438954353

Sidewalks : 60X60 Turn Area

Finding

There is no 60X60 turn area at every 200 feet.

On-Site Finding Not Found

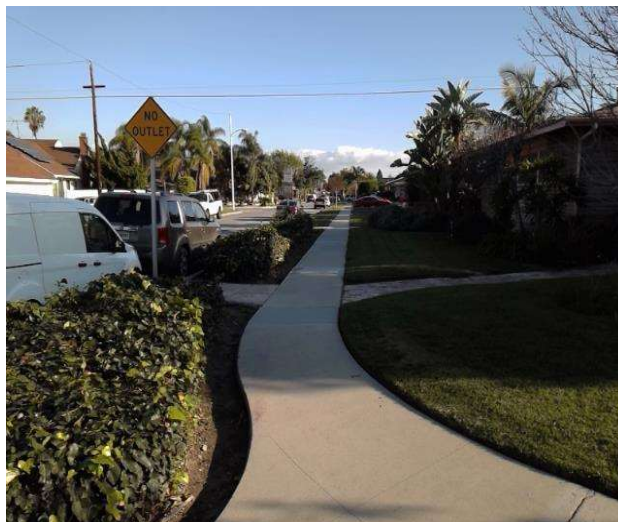
Recommendation

Provide a 60X60 turn every 200 feet on the sidewalk.

Recommendation See Recommendation

Costing Info (Estimated)

\$2,400



Code Reference ADA 206, 302

Progress

Record Number	352408	Resolution	None
Progress	Not_Started	Priority	Five
Actual Date		Projected Date	06/30/2025
Actual Cost	\$0.00	Contractor	
Comments	No Comments		
Assignment	None	New Value	0
Designated Staff			

Allengrove Street - Tweedy Lane to Danvers Street



Allengrove Street - Tweedy Lane to Danvers Street

**Tweedy Lane to Danvers Street
Downey, CA 90240**

Date of Inspection
2/4/2017

***Estimated Facility Total: \$33,833**

*Estimated facility total is for estimating purposes only and does not represent total construction, repair totals or design fees.

Prepared By

Disability Access Consultants

(800) 743-7067

Prepared Using



Accessibility Survey



City of Downey Allengrove Street - Tweedy Lane to Guatemala Avenue

Tweedy Lane to Guatemala Avenue
Downey, CA 90240

Date of Inspection
2/4/2017

Prepared By

Disability Access Consultants

(800) 743-7067

Allengrove Street - Tweedy Lane to Guatemala Avenue

Sidewalks - Exterior : Sidewalks , Change in Level

North Side

Change In Level West Of Smallwood Avenue @ 33.966062182192, - 118.125346004963

Sidewalks , Change in Level : Change in Level Non Beveled

Finding

There is a change in elevation greater than recommended value.

On-Site Finding 0.50 inches

Recommendation

Ensure that the change in elevation is within the recommended value.

Recommendation Up to 0.25 inches

Costing Info (Estimated)

Remove tripping hazards \$198



Code Reference ADA 206, 302

Progress

Record Number	352375	Resolution	None
Progress	Not_Started	Priority	Two
Actual Date		Projected Date	06/30/2021
Actual Cost	\$0.00	Contractor	
Comments	No Comments		
Assignment	None	New Value	0
Designated Staff			

Allengrove Street - Tweedy Lane to Guatemala Avenue

Sidewalks - Exterior : Sidewalks , Change in Level

North Side

Change In Level West Of Smallwood Avenue @ 33.966464822993, - 118.126150667667

Sidewalks , Change in Level : Change in Level Non Beveled

Finding

There is a change in elevation greater than recommended value.

On-Site Finding 0.50 inches

Recommendation

Ensure that the change in elevation is within the recommended value.

Recommendation Up to 0.25 inches

Costing Info (Estimated)

Remove tripping hazards \$198



Code Reference ADA 206, 302

Progress

Record Number	352379	Resolution	None
Progress	Not_Started	Priority	Two
Actual Date		Projected Date	06/30/2021
Actual Cost	\$0.00	Contractor	
Comments	No Comments		
Assignment	None	New Value	0
Designated Staff			

Allengrove Street - Tweedy Lane to Guatemala Avenue

Sidewalks - Exterior : Sidewalks , Change in Level

North Side

Change In Level West Of Smallwood Avenue @ 33.966480394698, - 118.126204311848

Sidewalks , Change in Level : Change in Level Non Beveled

Finding

There is a change in elevation greater than recommended value.

On-Site Finding 0.75 inches

Recommendation

Ensure that the change in elevation is within the recommended value.

Recommendation Up to 0.25 inches

Costing Info (Estimated)

Remove tripping hazards \$198



Code Reference ADA 206, 302

Progress

Record Number	352370	Resolution	None
Progress	Not_Started	Priority	Two
Actual Date		Projected Date	06/30/2021
Actual Cost	\$0.00	Contractor	
Comments	No Comments	New Value	0
Assignment	None		
Designated Staff			

Allengrove Street - Tweedy Lane to Guatemala Avenue

Sidewalks - Exterior : Sidewalks , Change in Level

North Side

Change In Level West Of Tweedy Lane @ 33.965332529918, -118.123897612095

Sidewalks , Change in Level : Change in Level Non Beveled

Finding

There is a change in elevation greater than recommended value.

On-Site Finding 0.75 inches

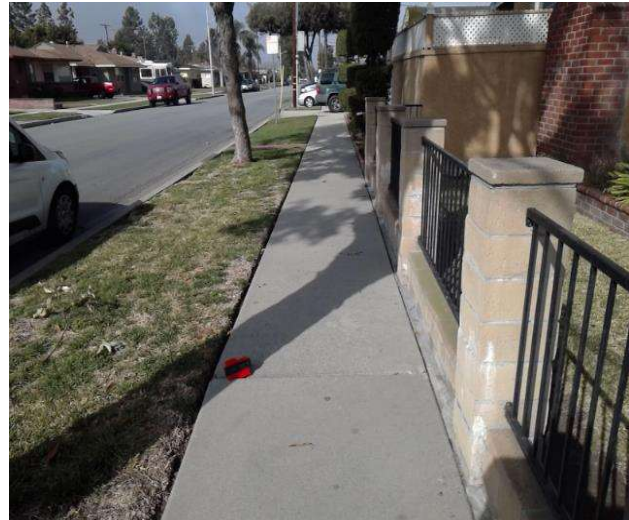
Recommendation

Ensure that the change in elevation is within the recommended value.

Recommendation Up to 0.25 inches

Costing Info (Estimated)

Remove tripping hazards \$198



Code Reference ADA 206, 302

Progress

Record Number	352371	Resolution	None
Progress	Not_Started	Priority	Two
Actual Date		Projected Date	06/30/2021
Actual Cost	\$0.00	Contractor	
Comments	No Comments	New Value	0
Assignment	None		
Designated Staff			

Allengrove Street - Tweedy Lane to Guatemala Avenue

Sidewalks - Exterior : Sidewalks , Change in Level

North Side

Change In Level West Of Tweedy Lane @ 33.965377021090, -118.123983442783

Sidewalks , Change in Level : Change in Level Non Beveled

Finding

There is a change in elevation greater than recommended value.

On-Site Finding 0.50 inches

Recommendation

Ensure that the change in elevation is within the recommended value.

Recommendation Up to 0.25 inches

Costing Info (Estimated)

Remove tripping hazards \$198



Code Reference ADA 206, 302

Progress

Record Number	352373	Resolution	None
Progress	Not_Started	Priority	Two
Actual Date		Projected Date	06/30/2021
Actual Cost	\$0.00	Contractor	
Comments	No Comments	New Value	0
Assignment	None		
Designated Staff			

Allengrove Street - Tweedy Lane to Guatemala Avenue

Sidewalks - Exterior : Sidewalks , Change in Level

North Side

Change In Level West Of Tweedy Lane @ 33.965452656028, -118.124144375324

Sidewalks , Change in Level : Change in Level Non Beveled

Finding

There is a change in elevation greater than recommended value.

On-Site Finding 0.50 inches

Recommendation

Ensure that the change in elevation is within the recommended value.

Recommendation Up to 0.25 inches

Costing Info (Estimated)

Remove tripping hazards \$198



Code Reference ADA 206, 302

Progress

Record Number	352368	Resolution	None
Progress	Not_Started	Priority	Two
Actual Date		Projected Date	06/30/2021
Actual Cost	\$0.00	Contractor	
Comments	No Comments	New Value	0
Assignment	None		
Designated Staff			

Allengrove Street - Tweedy Lane to Guatemala Avenue

Sidewalks - Exterior : Sidewalks , Change in Level

North Side

Change In Level West Of Tweedy Lane @ 33.965523841791, -118.124281167984

Sidewalks , Change in Level : Change in Level Non Beveled

Finding

There is a change in elevation greater than recommended value.

On-Site Finding 0.75 inches

Recommendation

Ensure that the change in elevation is within the recommended value.

Recommendation Up to 0.25 inches

Costing Info (Estimated)

Remove tripping hazards \$198



Code Reference ADA 206, 302

Progress

Record Number	352378	Resolution	None
Progress	Not_Started	Priority	Two
Actual Date		Projected Date	06/30/2021
Actual Cost	\$0.00	Contractor	
Comments	No Comments	New Value	0
Assignment	None		
Designated Staff			

Allengrove Street - Tweedy Lane to Guatemala Avenue

Sidewalks - Exterior : Sidewalks , Change in Level

North Side

Change In Level West Of Tweedy Lane @ 33.965557210096, -118.124345541

Sidewalks , Change in Level : Change in Level Non Beveled

Finding

There is a change in elevation greater than recommended value.

On-Site Finding 1.00 inches

Recommendation

Ensure that the change in elevation is within the recommended value.

Recommendation Up to 0.25 inches

Costing Info (Estimated)

Remove tripping hazards \$198



Code Reference ADA 206, 302

Progress

Record Number	352376	Resolution	None
Progress	Not_Started	Priority	Two
Actual Date		Projected Date	06/30/2021
Actual Cost	\$0.00	Contractor	
Comments	No Comments	New Value	0
Assignment	None		
Designated Staff			

Allengrove Street - Tweedy Lane to Guatemala Avenue

Sidewalks - Exterior : Sidewalks , Change in Level

North Side

Smallwood Avenue North Crossing @ 33.965688458639, -118.124586939812

Sidewalks , Change in Level : Change in Level Non Beveled

Finding

There is a change in elevation greater than recommended value.

On-Site Finding 0.75 inches

Recommendation

Ensure that the change in elevation is within the recommended value.

Recommendation Up to 0.25 inches

Costing Info (Estimated)

Remove tripping hazards \$198



Code Reference ADA 206, 302

Progress

Record Number	352374	Resolution	None
Progress	Not_Started	Priority	Two
Actual Date		Projected Date	06/30/2021
Actual Cost	\$0.00	Contractor	
Comments	No Comments	New Value	0
Assignment	None		
Designated Staff			

Allengrove Street - Tweedy Lane to Guatemala Avenue

Sidewalks - Exterior : Sidewalks , Change in Level

South Side

Change In Level East Of Guatemala Avenue @ 33.966887482556, - 118.127354979515

Sidewalks , Change in Level : Change in Level Non Beveled

Finding

There is a change in elevation greater than recommended value.

On-Site Finding 0.50 inches

Recommendation

Ensure that the change in elevation is within the recommended value.

Recommendation Up to 0.25 inches

Costing Info (Estimated)

Remove tripping hazards \$198



Code Reference ADA 206, 302

Progress

Record Number	352350	Resolution	None
Progress	Not_Started	Priority	Two
Actual Date		Projected Date	06/30/2021
Actual Cost	\$0.00	Contractor	
Comments	No Comments	New Value	0
Assignment	None		
Designated Staff			

Allengrove Street - Tweedy Lane to Guatemala Avenue

Sidewalks - Exterior : Sidewalks , Change in Level

South Side

Change In Level East Of Horley Avenue @ 33.965230200135, -118.124047815800

Sidewalks , Change in Level : Change in Level Non Beveled

Finding

There is a change in elevation greater than recommended value.

On-Site Finding 0.62 inches

Recommendation

Ensure that the change in elevation is within the recommended value.

Recommendation Up to 0.25 inches

Costing Info (Estimated)

Remove tripping hazards \$198



Code Reference ADA 206, 302

Progress

Record Number	352355	Resolution	None
Progress	Not_Started	Priority	Two
Actual Date		Projected Date	06/30/2021
Actual Cost	\$0.00	Contractor	
Comments	No Comments	New Value	0
Assignment	None		
Designated Staff			

Allengrove Street - Tweedy Lane to Guatemala Avenue

Sidewalks - Exterior : Sidewalks , Change in Level

South Side

Change In Level East Of Horley Avenue @ 33.965285814163, -118.124165832996

Sidewalks , Change in Level : Change in Level Non Beveled

Finding

There is a change in elevation greater than recommended value.

On-Site Finding 0.50 inches

Recommendation

Ensure that the change in elevation is within the recommended value.

Recommendation Up to 0.25 inches

Costing Info (Estimated)

Remove tripping hazards \$198



Code Reference ADA 206, 302

Progress

Record Number	352353	Resolution	None
Progress	Not_Started	Priority	Two
Actual Date		Projected Date	06/30/2021
Actual Cost	\$0.00	Contractor	
Comments	No Comments		
Assignment	None	New Value	0
Designated Staff			

Allengrove Street - Tweedy Lane to Guatemala Avenue

Sidewalks - Exterior : Sidewalks , Change in Level

South Side

Change In Level East Of Horley Avenue @ 33.965530515453, -118.124656677246

Sidewalks , Change in Level : Change in Level Non Beveled

Finding

There is a change in elevation greater than recommended value.

On-Site Finding 0.62 inches

Recommendation

Ensure that the change in elevation is within the recommended value.

Recommendation Up to 0.25 inches

Costing Info (Estimated)

Remove tripping hazards \$198



Code Reference ADA 206, 302

Progress

Record Number	352349	Resolution	None
Progress	Not_Started	Priority	Two
Actual Date		Projected Date	06/30/2021
Actual Cost	\$0.00	Contractor	
Comments	No Comments	New Value	0
Assignment	None		
Designated Staff			

Allengrove Street - Tweedy Lane to Guatemala Avenue

Sidewalks - Exterior : Sidewalks , Change in Level

South Side

Change In Level East Of Horley Avenue @ 33.965543862776, -118.124688863754

Sidewalks , Change in Level : Change in Level Non Beveled

Finding

There is a change in elevation greater than recommended value.

On-Site Finding 0.75 inches

Recommendation

Ensure that the change in elevation is within the recommended value.

Recommendation Up to 0.25 inches

Costing Info (Estimated)

Remove tripping hazards \$198



Code Reference ADA 206, 302

Progress

Record Number	352352	Resolution	None
Progress	Not_Started	Priority	Two
Actual Date		Projected Date	06/30/2021
Actual Cost	\$0.00	Contractor	
Comments	No Comments	New Value	0
Assignment	None		
Designated Staff			

Allengrove Street - Tweedy Lane to Guatemala Avenue

Sidewalks - Exterior : Sidewalks , Change in Level

South Side

Change In Level East Of Horley Avenue @ 33.965670662238, -118.124935626984

Sidewalks , Change in Level : Change in Level Non Beveled

Finding

There is a change in elevation greater than recommended value.

On-Site Finding 0.50 inches

Recommendation

Ensure that the change in elevation is within the recommended value.

Recommendation Up to 0.25 inches

Costing Info (Estimated)

Remove tripping hazards \$198



Code Reference ADA 206, 302

Progress

Record Number	352345	Resolution	None
Progress	Not_Started	Priority	Two
Actual Date		Projected Date	06/30/2021
Actual Cost	\$0.00	Contractor	
Comments	No Comments	New Value	0
Assignment	None		
Designated Staff			

Allengrove Street - Tweedy Lane to Guatemala Avenue

Sidewalks - Exterior : Sidewalks , Change in Level

South Side

Change In Level East Of Horley Avenue @ 33.965699581387, -118.124965131283

Sidewalks , Change in Level : Change in Level Non Beveled

Finding

There is a change in elevation greater than recommended value.

On-Site Finding 0.62 inches

Recommendation

Ensure that the change in elevation is within the recommended value.

Recommendation Up to 0.25 inches

Costing Info (Estimated)

Remove tripping hazards \$198



Code Reference ADA 206, 302

Progress

Record Number	352344	Resolution	None
Progress	Not_Started	Priority	Two
Actual Date		Projected Date	06/30/2021
Actual Cost	\$0.00	Contractor	
Comments	No Comments	New Value	0
Assignment	None		
Designated Staff			

Allengrove Street - Tweedy Lane to Guatemala Avenue

Sidewalks - Exterior : Sidewalks , Change in Level

South Side

Change In Level East Of Horley Avenue @ 33.965699581387, -118.124965131283

Sidewalks , Change in Level : Change in Level Non Beveled

Finding

There is a change in elevation greater than recommended value.

On-Site Finding 0.75 inches

Recommendation

Ensure that the change in elevation is within the recommended value.

Recommendation Up to 0.25 inches

Costing Info (Estimated)

Remove tripping hazards \$198



Code Reference ADA 206, 302

Progress

Record Number	352354	Resolution	None
Progress	Not_Started	Priority	Two
Actual Date		Projected Date	06/30/2021
Actual Cost	\$0.00	Contractor	
Comments	No Comments	New Value	0
Assignment	None		
Designated Staff			

Allengrove Street - Tweedy Lane to Guatemala Avenue

Sidewalks - Exterior : Sidewalks , Change in Level

South Side

Horley Avenue South Crossing @ 33.966645009695, -118.126866817474

Sidewalks , Change in Level : Change in Level Non Beveled

Finding

There is a change in elevation greater than recommended value.

On-Site Finding 1.25 inches

Recommendation

Ensure that the change in elevation is within the recommended value.

Recommendation Up to 0.25 inches

Costing Info (Estimated)

Remove tripping hazards \$198



Code Reference ADA 206, 302

Progress

Record Number	352343	Resolution	None
Progress	Not_Started	Priority	Two
Actual Date		Projected Date	06/30/2020
Actual Cost	\$0.00	Contractor	
Comments	No Comments		
Assignment	None	New Value	0
Designated Staff			

Allengrove Street - Tweedy Lane to Guatemala Avenue

Sidewalks - Exterior : Sidewalks , Change in Level

North Side

Change In Level West Of Smallwood Avenue @ 33.966017691379, - 118.125262856483

Sidewalks , Change in Level : Change in Level Non Beveled

Finding

There is a change in elevation greater than recommended value.

On-Site Finding 0.37 inches

Recommendation

Ensure that the change in elevation is within the recommended value.

Recommendation Up to 0.25 inches

Costing Info (Estimated)

Remove tripping hazards \$198



Code Reference ADA 206, 302

Progress

Record Number	352377	Resolution	None
Progress	Not_Started	Priority	Three
Actual Date		Projected Date	12/31/2022
Actual Cost	\$0.00	Contractor	
Comments	No Comments		
Assignment	None	New Value	0
Designated Staff			

Allengrove Street - Tweedy Lane to Guatemala Avenue

Sidewalks - Exterior : Sidewalks , Change in Level

North Side

Change In Level West Of Smallwood Avenue @ 33.966233471606, - 118.125692009926

Sidewalks , Change in Level : Change in Level Non Beveled

Finding

There is a change in elevation greater than recommended value.

On-Site Finding 0.37 inches

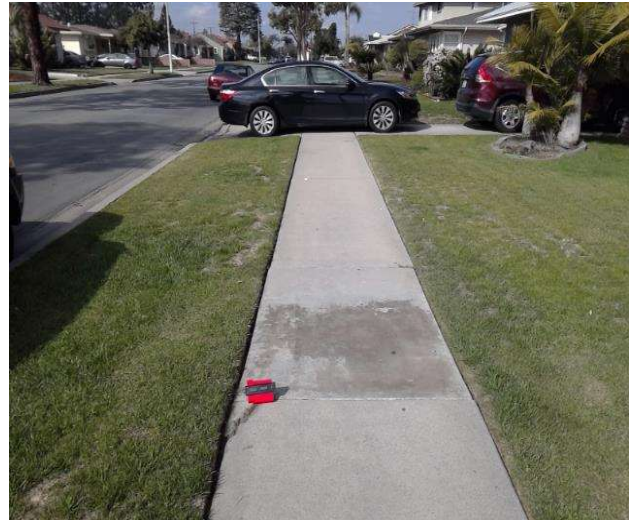
Recommendation

Ensure that the change in elevation is within the recommended value.

Recommendation Up to 0.25 inches

Costing Info (Estimated)

Remove tripping hazards \$198



Code Reference ADA 206, 302

Progress

Record Number	352366	Resolution	None
Progress	Not_Started	Priority	Three
Actual Date		Projected Date	12/31/2022
Actual Cost	\$0.00	Contractor	
Comments	No Comments		
Assignment	None	New Value	0
Designated Staff			

Allengrove Street - Tweedy Lane to Guatemala Avenue

Sidewalks - Exterior : Sidewalks , Change in Level

North Side

Change In Level West Of Smallwood Avenue @ 33.966647234220, - 118.126528859138

Sidewalks , Change in Level : Change in Level Non Beveled

Finding

There is a change in elevation greater than recommended value.

On-Site Finding 0.37 inches

Recommendation

Ensure that the change in elevation is within the recommended value.

Recommendation Up to 0.25 inches

Costing Info (Estimated)

Remove tripping hazards \$198



Code Reference ADA 206, 302

Progress

Record Number	352365	Resolution	None
Progress	Not_Started	Priority	Three
Actual Date		Projected Date	12/31/2022
Actual Cost	\$0.00	Contractor	
Comments	No Comments	New Value	0
Assignment	None		
Designated Staff			

Allengrove Street - Tweedy Lane to Guatemala Avenue

Sidewalks - Exterior : Sidewalks , Change in Level

North Side

Change In Level West Of Smallwood Avenue @ 33.967190016533, - 118.127585649490

Sidewalks , Change in Level : Change in Level Non Beveled

Finding

There is a change in elevation greater than recommended value.

On-Site Finding 0.37 inches

Recommendation

Ensure that the change in elevation is within the recommended value.

Recommendation Up to 0.25 inches

Costing Info (Estimated)

Remove tripping hazards \$198



Code Reference ADA 206, 302

Progress

Record Number	352367	Resolution	None
Progress	Not_Started	Priority	Three
Actual Date		Projected Date	12/31/2022
Actual Cost	\$0.00	Contractor	
Comments	No Comments		
Assignment	None	New Value	0
Designated Staff			

Allengrove Street - Tweedy Lane to Guatemala Avenue

Sidewalks - Exterior : Sidewalks , Change in Level

South Side

Change In Level East Of Horley Avenue @ 33.965445982360, -118.124501109123

Sidewalks , Change in Level : Change in Level Non Beveled

Finding

There is a change in elevation greater than recommended value.

On-Site Finding 0.37 inches

Recommendation

Ensure that the change in elevation is within the recommended value.

Recommendation Up to 0.25 inches

Costing Info (Estimated)

Remove tripping hazards \$198



Code Reference ADA 206, 302

Progress

Record Number	352351	Resolution	None
Progress	Not_Started	Priority	Three
Actual Date		Projected Date	12/31/2022
Actual Cost	\$0.00	Contractor	
Comments	No Comments	New Value	0
Assignment	None		
Designated Staff			

Allengrove Street - Tweedy Lane to Guatemala Avenue

Sidewalks - Exterior : Sidewalks , Change in Level

South Side

Change In Level East Of Horley Avenue @ 33.965610599358, -118.124817609787

Sidewalks , Change in Level : Change in Level Non Beveled

Finding

There is a change in elevation greater than recommended value.

On-Site Finding 0.37 inches

Recommendation

Ensure that the change in elevation is within the recommended value.

Recommendation Up to 0.25 inches

Costing Info (Estimated)

Remove tripping hazards \$198



Code Reference ADA 206, 302

Progress

Record Number	352347	Resolution	None
Progress	Not_Started	Priority	Three
Actual Date		Projected Date	12/31/2022
Actual Cost	\$0.00	Contractor	
Comments	No Comments	New Value	0
Assignment	None		
Designated Staff			

Allengrove Street - Tweedy Lane to Guatemala Avenue

Curb Ramps - Exterior : Curb Ramp

Northeast Corner Of Guatemala Avenue @ 33.967461406390, - 118.128087222576

Curb Ramp : No Detectable Warnings

Finding

The curb ramp does not provide a detectable warning surface which includes truncated domes.

On-Site Finding Not Found

Recommendation

Provide compliant detectable warnings to surface.

Recommendation See Recommendation

Costing Info (Estimated)

Provide detectable warning to surface \$248



Code Reference CA 11B-406.5.12

Progress

Record Number	352333	Resolution	None
Progress	Not_Started	Priority	Five
Actual Date		Projected Date	06/30/2025
Actual Cost	\$0.00	Contractor	
Comments	No Comments	New Value	0
Assignment	None		
Designated Staff			

Allengrove Street - Tweedy Lane to Guatemala Avenue

Curb Ramps - Exterior : Curb Ramp

Northeast Corner Of Guatemala Avenue @ 33.967461406390, - 118.128087222576

Curb Ramp : Curb Ramp Slope

Finding

The running slope is greater than allowed.

On-Site Finding 10.70 percent

Recommendation

Provide a compliant curb ramp.

Recommendation Up to 8.33 percent

Costing Info (Estimated)

Install curb ramp \$1,300



Code Reference ADA 406, 406.1, 405.2, CA 11B-406

Progress

Record Number	352334	Resolution	None
Progress	Not_Started	Priority	Five
Actual Date		Projected Date	06/30/2025
Actual Cost	\$0.00	Contractor	
Comments	No Comments	New Value	0
Assignment	None		
Designated Staff			

Allengrove Street - Tweedy Lane to Guatemala Avenue

Curb Ramps - Exterior : Curb Ramp

Northeast Corner Of Guatemala Avenue @ 33.967461406390, - 118.128087222576

Curb Ramp : Side Flare Slope

Finding

The slope of the curb ramp side flare is greater than allowed.

On-Site Finding 17.20 percent

Recommendation

Provide curb ramp side flares with a compliant slope.

Recommendation Up to 10.00 percent

Costing Info (Estimated)

Install flared sides \$1,300



Code Reference ADA 406, 406.3, CA 11B-406.2.2

Progress

Record Number	352335	Resolution	None
Progress	Not_Started	Priority	Five
Actual Date		Projected Date	06/30/2025
Actual Cost	\$0.00	Contractor	
Comments	No Comments	New Value	0
Assignment	None		
Designated Staff			

Allengrove Street - Tweedy Lane to Guatemala Avenue

Curb Ramps - Exterior : Curb Ramp , Landings And Transitions

Northeast Corner Of Guatemala Avenue @ 33.967461406390, - 118.128087222576

Bottom Landing

Finding

The transition from the bottom of the curb ramp to the walk, gutter, or street is abrupt.

On-Site Finding 0.75 inches

Recommendation

Patch the transition area at the bottom of the curb ramp so that the transition is flush and free of abrupt changes.

Recommendation Up to 0.50 inches

Costing Info (Estimated)

Patch lip at curb ramp \$255

Curb Ramp , Landings And Transitions : Bottom Landing Change in Level



Code Reference ADA 302, 303, 406.2, 303.1

Progress

Record Number	352336	Resolution	None
Progress	Not_Started	Priority	Five
Actual Date		Projected Date	06/30/2025
Actual Cost	\$0.00	Contractor	
Comments	No Comments		
Assignment	None	New Value	0
Designated Staff			

Allengrove Street - Tweedy Lane to Guatemala Avenue

Curb Ramps - Exterior : Curb Ramp , Landings and Transitions

Northeast Corner Of Guatemala Avenue @ 33.967461406390, - 118.128087222576

Top Landing

Finding

The slope at the top landing is greater than allowed.

On-Site Finding 3.50 percent

Recommendation

Provide a top landing surface that does not exceed the maximum slope and cross slope. Provide a sufficient maneuvering clearance that does not accumulate water.

Recommendation Up to 2.08 percent

Costing Info (Estimated)

Provide compliant landing \$1,260

Curb Ramp , Landings and Transitions : Top Landing Slope



Code Reference ADA 402, 406.4, 403.3, 406.1, CA 11B-406.5.3

Progress

Record Number	352337	Resolution	None
Progress	Not_Started	Priority	Five
Actual Date		Projected Date	06/30/2025
Actual Cost	\$0.00	Contractor	
Comments	No Comments		
Assignment	None	New Value	0
Designated Staff			

Allengrove Street - Tweedy Lane to Guatemala Avenue

Sidewalks - Exterior : Sidewalks , Hazards & Gratings

North Side

Northwest Corner Of Tweedy Lane @ 33.965316958003, -118.123852014542

Sidewalks , Hazards & Gratings : Curb is on Path of Travel

Finding

There is a curb on the designated path of travel.

On-Site Finding Not Compliant

Recommendation

Provide a compliant curb ramp.

Recommendation See Recommendation

Costing Info (Estimated)

Install curb ramp \$2,500



Code Reference ADA 402, 303, 406, 403.4, 303.4

Progress

Record Number	352369	Resolution	None
Progress	Not_Started	Priority	Five
Actual Date		Projected Date	06/30/2025
Actual Cost	\$0.00	Contractor	
Comments	No Comments	New Value	0
Assignment	None		
Designated Staff			

Allengrove Street - Tweedy Lane to Guatemala Avenue

Sidewalks - Exterior : Sidewalks

North Side

Sidewalk West Of Smallwood Avenue @ 33.965732949624, -118.124691545963

Sidewalks : Width

Finding

Sidewalk does not have enough width.

On-Site Finding 46.75 inches for 62.00 feet

Recommendation

Widen the sidewalk to the recommended value.

Recommendation At least 48.00 inches

Costing Info (Estimated)

\$1,260



Code Reference ADA 206, 302, CA 11B-403.5.1

Progress

Record Number	352358	Resolution	None
Progress	Not_Started	Priority	Five
Actual Date		Projected Date	06/30/2025
Actual Cost	\$0.00	Contractor	
Comments	No Comments	New Value	0
Assignment	None		
Designated Staff			

Allengrove Street - Tweedy Lane to Guatemala Avenue

Sidewalks - Exterior : Sidewalks , Surface

North Side

Sidewalk West Of Smallwood Avenue @ 33.965732949624, -118.124691545963

Sidewalks , Surface : Cross Slope

Finding

Sidewalk cross slope is not compliant.

On-Site Finding 3.20 percent for 210.00 feet

Recommendation

Repave the sidewalk surface with the recommended cross slope.

Recommendation Up to 2.08 percent

Costing Info (Estimated)

Repave surface \$1,092



Code Reference ADA 206, 302,CA 11B-403.3

Progress

Record Number	352359	Resolution	None
Progress	Not_Started	Priority	Five
Actual Date		Projected Date	06/30/2025
Actual Cost	\$0.00	Contractor	
Comments	No Comments	New Value	0
Assignment	None		
Designated Staff			

Allengrove Street - Tweedy Lane to Guatemala Avenue

Sidewalks - Exterior : Sidewalks , Surface

North Side

Sidewalk West Of Smallwood Avenue @ 33.966120020215, -118.125474750996

Sidewalks , Surface : Cross Slope

Finding

Sidewalk cross slope is not compliant.

On-Site Finding 3.30 percent for 80.00 feet

Recommendation

Repave the sidewalk surface with the recommended cross slope.

Recommendation Up to 2.08 percent

Costing Info (Estimated)

Repave surface \$1,092



Code Reference ADA 206, 302,CA 11B-403.3

Progress

Record Number	352361	Resolution	None
Progress	Not_Started	Priority	Five
Actual Date		Projected Date	06/30/2025
Actual Cost	\$0.00	Contractor	
Comments	No Comments	New Value	0
Assignment	None		
Designated Staff			

Allengrove Street - Tweedy Lane to Guatemala Avenue

Sidewalks - Exterior : Sidewalks , Surface

North Side

Sidewalk West Of Smallwood Avenue @ 33.966286860443, -118.125796616077

Sidewalks , Surface : Cross Slope

Finding

Sidewalk cross slope is not compliant.

On-Site Finding 3.10 percent for 287.00 feet

Recommendation

Repave the sidewalk surface with the recommended cross slope.

Recommendation Up to 2.08 percent

Costing Info (Estimated)

Repave surface \$1,092



Code Reference ADA 206, 302,CA 11B-403.3

Progress

Record Number	352360	Resolution	None
Progress	Not_Started	Priority	Five
Actual Date		Projected Date	06/30/2025
Actual Cost	\$0.00	Contractor	
Comments	No Comments	New Value	0
Assignment	None		
Designated Staff			

Allengrove Street - Tweedy Lane to Guatemala Avenue

Sidewalks - Exterior : Sidewalks , Surface

North Side

Sidewalk West Of Smallwood Avenue @ 33.966647234220, -118.126528859138

Sidewalks , Surface : Cross Slope

Finding

Sidewalk cross slope is not compliant.

On-Site Finding 3.50 percent for 485.00 feet

Recommendation

Repave the sidewalk surface with the recommended cross slope.

Recommendation Up to 2.08 percent

Costing Info (Estimated)

Repave surface \$1,092



Code Reference ADA 206, 302,CA 11B-403.3

Progress

Record Number	352363	Resolution	None
Progress	Not_Started	Priority	Five
Actual Date		Projected Date	06/30/2025
Actual Cost	\$0.00	Contractor	
Comments	No Comments		
Assignment	None	New Value	0
Designated Staff			

Allengrove Street - Tweedy Lane to Guatemala Avenue

Sidewalks - Exterior : Sidewalks , Surface

North Side

Sidewalk West Of Tweedy Lane @ 33.965357065, -118.123935163021

Sidewalks , Surface : Cross Slope

Finding

Sidewalk cross slope is not compliant.

On-Site Finding 3.50 percent for 120.00 feet

Recommendation

Repave the sidewalk surface with the recommended cross slope.

Recommendation Up to 2.08 percent

Costing Info (Estimated)

Repave surface \$1,092



Code Reference ADA 206, 302,CA 11B-403.3

Progress

Record Number	352364	Resolution	None
Progress	Not_Started	Priority	Five
Actual Date		Projected Date	06/30/2025
Actual Cost	\$0.00	Contractor	
Comments	No Comments		
Assignment	None	New Value	0
Designated Staff			

Allengrove Street - Tweedy Lane to Guatemala Avenue

Sidewalks - Exterior : Sidewalks , Surface

North Side

Sidewalk West Of Tweedy Lane @ 33.965557210096, -118.124345541

Sidewalks , Surface : Cross Slope

Finding

Sidewalk cross slope is not compliant.

On-Site Finding 3.00 percent for 60.00 feet

Recommendation

Repave the sidewalk surface with the recommended cross slope.

Recommendation Up to 2.08 percent

Costing Info (Estimated)

Repave surface \$1,092



Code Reference ADA 206, 302,CA 11B-403.3

Progress

Record Number	352362	Resolution	None
Progress	Not_Started	Priority	Five
Actual Date		Projected Date	06/30/2025
Actual Cost	\$0.00	Contractor	
Comments	No Comments	New Value	0
Assignment	None		
Designated Staff			

Allengrove Street - Tweedy Lane to Guatemala Avenue

Sidewalks - Exterior : Sidewalks

North Side

Smallwood Avenue North Crossing @ 33.965688458639, -118.124586939812

Sidewalks : Vehicular Traffic Cross Slope

Finding

Cross slope at vehicular traffic is not compliant.

On-Site Finding 4.20 percent

Recommendation

Repave the surface to provide a compliant cross slope.

Recommendation Up to 2.08 percent

Costing Info (Estimated)

Repave surface \$1,092



Code Reference ADA 206, 302, CA 11B-403.3

Progress

Record Number	352380	Resolution	None
Progress	Not_Started	Priority	Five
Actual Date		Projected Date	06/30/2025
Actual Cost	\$0.00	Contractor	
Comments	No Comments		
Assignment	None	New Value	0
Designated Staff			

Allengrove Street - Tweedy Lane to Guatemala Avenue

Sidewalks - Exterior : Sidewalks , Hazards & Gratings

North Side

Tree West Of Smallwood Avenue @ 33.966898605148, -118.127008974552

Sidewalks , Hazards & Gratings : Overhead Obstruction Height

Finding

Overhead obstruction height is not compliant.

On-Site Finding 68.00 inches

Recommendation

Provide a compliant vertical clearance height.

Recommendation At least 80.00 inches

Costing Info (Estimated)

Unassigned



Code Reference ADA 206, 307.4, CA 11B-307.4

Progress

Record Number	352372	Resolution	None
Progress	Not_Started	Priority	Five
Actual Date		Projected Date	06/30/2025
Actual Cost	\$0.00	Contractor	
Comments	No Comments	New Value	0
Assignment	None		
Designated Staff			

Allengrove Street - Tweedy Lane to Guatemala Avenue

Sidewalks - Exterior : Sidewalks

North Side @ 33.965316958003, -118.123852014542

Sidewalks : 60X60 Turn Area

Finding

There is no 60X60 turn area at every 200 feet.

On-Site Finding Not Found

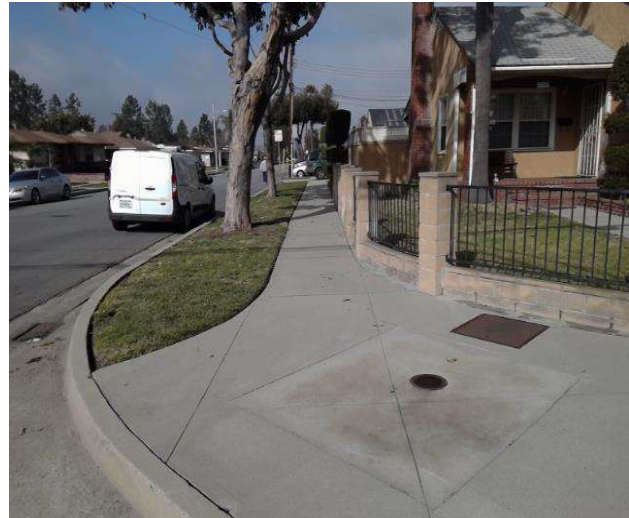
Recommendation

Provide a 60X60 turn every 200 feet on the sidewalk.

Recommendation See Recommendation

Costing Info (Estimated)

\$2,400



Code Reference ADA 206, 302

Progress

Record Number	352357	Resolution	None
Progress	Not_Started	Priority	Five
Actual Date		Projected Date	06/30/2025
Actual Cost	\$0.00	Contractor	
Comments	No Comments		
Assignment	None	New Value	0
Designated Staff			

Allengrove Street - Tweedy Lane to Guatemala Avenue

Sidewalks - Exterior : Sidewalks , Surface

South Side

Sidewalk East Of Guatemala Avenue @ 33.967370201698, -118.128307163715

Sidewalks , Surface : Cross Slope

Finding

Sidewalk cross slope is not compliant.

On-Site Finding 3.00 percent for 480.00 feet

Recommendation

Repave the sidewalk surface with the recommended cross slope.

Recommendation Up to 2.08 percent

Costing Info (Estimated)

Repave surface \$1,092



Code Reference ADA 206, 302,CA 11B-403.3

Progress

Record Number	352339	Resolution	None
Progress	Not_Started	Priority	Five
Actual Date		Projected Date	06/30/2025
Actual Cost	\$0.00	Contractor	
Comments	No Comments		
Assignment	None	New Value	0
Designated Staff			

Allengrove Street - Tweedy Lane to Guatemala Avenue

Sidewalks - Exterior : Sidewalks , Surface

South Side

Sidewalk East Of Horley Avenue @ 33.966600519187, -118.126797080040

Sidewalks , Surface : Cross Slope

Finding

Sidewalk cross slope is not compliant.

On-Site Finding 3.50 percent for 1000.00 feet

Recommendation

Repave the sidewalk surface with the recommended cross slope.

Recommendation Up to 2.08 percent

Costing Info (Estimated)

Repave surface \$1,092



Code Reference ADA 206, 302,CA 11B-403.3

Progress

Record Number	352340	Resolution	None
Progress	Not_Started	Priority	Five
Actual Date		Projected Date	06/30/2025
Actual Cost	\$0.00	Contractor	
Comments	No Comments	New Value	0
Assignment	None		
Designated Staff			

Allengrove Street - Tweedy Lane to Guatemala Avenue

Sidewalks - Exterior : Sidewalks , Hazards & Gratings

South Side

Southeast Corner Of Guatemala Avenue @ 33.967370201698, -118.128307163715

Sidewalks , Hazards & Gratings : Curb is on Path of Travel

Finding

There is a curb on the designated path of travel.

On-Site Finding Not Compliant

Recommendation

Provide a compliant curb ramp.

Recommendation See Recommendation

Costing Info (Estimated)

Install curb ramp \$2,500



Code Reference ADA 402, 303, 406, 403.4, 303.4

Progress

Record Number	352341	Resolution	None
Progress	Not_Started	Priority	Five
Actual Date		Projected Date	06/30/2025
Actual Cost	\$0.00	Contractor	
Comments	No Comments	New Value	0
Assignment	None		
Designated Staff			

Allengrove Street - Tweedy Lane to Guatemala Avenue

Sidewalks - Exterior : Sidewalks , Hazards & Gratings

South Side

Southeast Corner Of Horley Avenue @ 33.966600519187, -118.126797080040

Sidewalks , Hazards & Gratings : Curb is on Path of Travel

Finding

There is a curb on the designated path of travel.

On-Site Finding Not Compliant

Recommendation

Provide a compliant curb ramp.

Recommendation See Recommendation

Costing Info (Estimated)

Install curb ramp \$2,500



Code Reference ADA 402, 303, 406, 403.4, 303.4

Progress

Record Number	352346	Resolution	None
Progress	Not_Started	Priority	Five
Actual Date		Projected Date	06/30/2025
Actual Cost	\$0.00	Contractor	
Comments	No Comments	New Value	0
Assignment	None		
Designated Staff			

Allengrove Street - Tweedy Lane to Guatemala Avenue

Sidewalks - Exterior : Sidewalks , Hazards & Gratings

South Side

Southwest Corner Of Horley Avenue @ 33.966687275656, -118.126958012581

Sidewalks , Hazards & Gratings : Curb is on Path of Travel

Finding

There is a curb on the designated path of travel.

On-Site Finding Not Compliant

Recommendation

Provide a compliant curb ramp.

Recommendation See Recommendation

Costing Info (Estimated)

Install curb ramp \$2,500



Code Reference ADA 402, 303, 406, 403.4, 303.4

Progress

Record Number	352342	Resolution	None
Progress	Not_Started	Priority	Five
Actual Date		Projected Date	06/30/2025
Actual Cost	\$0.00	Contractor	
Comments	No Comments	New Value	0
Assignment	None		
Designated Staff			

Allengrove Street - Tweedy Lane to Guatemala Avenue

Sidewalks - Exterior : Sidewalks , Hazards & Gratings

South Side

Southwest Corner Of Tweedy Lane @ 33.965230200135, -118.124047815800

Sidewalks , Hazards & Gratings : Curb is on Path of Travel

Finding

There is a curb on the designated path of travel.

On-Site Finding Not Compliant

Recommendation

Provide a compliant curb ramp.

Recommendation See Recommendation

Costing Info (Estimated)

Install curb ramp \$2,500



Code Reference ADA 402, 303, 406, 403.4, 303.4

Progress

Record Number	352348	Resolution	None
Progress	Not_Started	Priority	Five
Actual Date		Projected Date	06/30/2025
Actual Cost	\$0.00	Contractor	
Comments	No Comments		
Assignment	None	New Value	0
Designated Staff			

Allengrove Street - Tweedy Lane to Guatemala Avenue

Sidewalks - Exterior : Sidewalks , Hazards & Gratings

South Side

Tree East Of Horley Avenue @ 33.966048834951, -118.125710785389

Sidewalks , Hazards & Gratings : Overhead Obstruction Height

Finding

Overhead obstruction height is not compliant.

On-Site Finding 76.00 inches

Recommendation

Provide a compliant vertical clearance height.

Recommendation At least 80.00 inches

Costing Info (Estimated)

Unassigned



Code Reference ADA 206, 307.4,CA 11B-307.4

Progress

Record Number	352356	Resolution	None
Progress	Not_Started	Priority	Five
Actual Date		Projected Date	06/30/2025
Actual Cost	\$0.00	Contractor	
Comments	No Comments		
Assignment	None	New Value	0
Designated Staff			

Allengrove Street - Tweedy Lane to Guatemala Avenue

Sidewalks - Exterior : Sidewalks

South Side @ 33.967370201698, -118.128307163715

Sidewalks : 60X60 Turn Area

Finding

There is no 60X60 turn area at every 200 feet.

On-Site Finding Not Found

Recommendation

Provide a 60X60 turn every 200 feet on the sidewalk.

Recommendation See Recommendation

Costing Info (Estimated)

\$2,400



Code Reference ADA 206, 302

Progress

Record Number	352338	Resolution	None
Progress	Not_Started	Priority	Five
Actual Date		Projected Date	06/30/2025
Actual Cost	\$0.00	Contractor	
Comments	No Comments		
Assignment	None	New Value	0
Designated Staff			

Allengrove Street - Tweedy Lane to Guatemala Avenue



Allengrove Street - Tweedy Lane to Guatemala Avenue

**Tweedy Lane to Guatemala Avenue
Downey, CA 90240**

Date of Inspection
2/4/2017

***Estimated Facility Total: \$37,503**

*Estimated facility total is for estimating purposes only and does not represent total construction, repair totals or design fees.

Prepared By

Disability Access Consultants

(800) 743-7067

Prepared Using

