

# Accessibility Survey

---



## City of Downey Harper Avenue - Rives Avenue To Cul-de-Sac

Rives Avenue To Cul-de-Sac  
Downey, CA 90241

Date of Inspection  
2/1/2017

Prepared By  
**Disability Access Consultants**  
(800) 743-7067

**Harper Avenue - Rives Avenue To Cul-de-Sac**

**Sidewalks - Exterior : Sidewalks , Change in Level**

---

**North Side**

**Change In Level East Of Rives Avenue @ 33.950259806427, -118.135799914598**

Sidewalks , Change in Level : Change in Level Non Beveled

**Finding**

There is a change in elevation greater than recommended value.

**On-Site Finding** 2.50 inches

**Recommendation**

Ensure that the change in elevation is within the recommended value.

Recommendation Up to 0.25 inches

**Costing Info (Estimated)**

Remove tripping hazards \$198



**Code Reference** ADA 206, 302

**Progress**

---

<b>Record Number</b>	348525	<b>Resolution</b>	None
<b>Progress</b>	Not_Started	<b>Priority</b>	One
<b>Actual Date</b>		<b>Projected Date</b>	06/30/2018
<b>Actual Cost</b>	\$0.00	<b>Contractor</b>	
<b>Comments</b>	No Comments	<b>New Value</b>	0
<b>Assignment</b>	None		
<b>Designated Staff</b>			

## Harper Avenue - Rives Avenue To Cul-de-Sac

### Sidewalks - Exterior : Sidewalks , Change in Level

---

#### North Side

#### Change In Level East Of Smallwood Avenue @ 33.950223094690, - 118.135730177164

Sidewalks , Change in Level : Change in Level Non Beveled

#### Finding

There is a change in elevation greater than recommended value.

**On-Site Finding** 2.00 inches

#### Recommendation

Ensure that the change in elevation is within the recommended value.

Recommendation Up to 0.25 inches

#### Costing Info (Estimated)

Remove tripping hazards \$198



**Code Reference** ADA 206, 302

#### Progress

---

<b>Record Number</b>	348528	<b>Resolution</b>	None
<b>Progress</b>	Not_Started	<b>Priority</b>	One
<b>Actual Date</b>		<b>Projected Date</b>	06/30/2018
<b>Actual Cost</b>	\$0.00	<b>Contractor</b>	
<b>Comments</b>	No Comments		
<b>Assignment</b>	None	<b>New Value</b>	0
<b>Designated Staff</b>			

## Harper Avenue - Rives Avenue To Cul-de-Sac

### Sidewalks - Exterior : Sidewalks , Change in Level

---

#### North Side

#### Change In Level East Of Smallwood Avenue @ 33.949382057825, - 118.134106099606

Sidewalks , Change in Level : Change in Level Non Beveled

#### Finding

There is a change in elevation greater than recommended value.

**On-Site Finding** 1.12 inches

#### Recommendation

Ensure that the change in elevation is within the recommended value.

Recommendation Up to 0.25 inches

#### Costing Info (Estimated)

Remove tripping hazards \$198



**Code Reference** ADA 206, 302

#### Progress

---

<b>Record Number</b>	348527	<b>Resolution</b>	None
<b>Progress</b>	Not_Started	<b>Priority</b>	Two
<b>Actual Date</b>		<b>Projected Date</b>	06/30/2021
<b>Actual Cost</b>	\$0.00	<b>Contractor</b>	
<b>Comments</b>	No Comments		
<b>Assignment</b>	None	<b>New Value</b>	0
<b>Designated Staff</b>			



## Harper Avenue - Rives Avenue To Cul-de-Sac

### Sidewalks - Exterior : Sidewalks , Change in Level

---

#### North Side

#### Change In Level East Of Smallwood Avenue @ 33.949646829586, - 118.134619742632

Sidewalks , Change in Level : Change in Level Non Beveled

#### Finding

There is a change in elevation greater than recommended value.

**On-Site Finding** 0.50 inches

#### Recommendation

Ensure that the change in elevation is within the recommended value.

Recommendation Up to 0.25 inches

#### Costing Info (Estimated)

Remove tripping hazards \$198



**Code Reference** ADA 206, 302

#### Progress

---

<b>Record Number</b>	348529	<b>Resolution</b>	None
<b>Progress</b>	Not_Started	<b>Priority</b>	Two
<b>Actual Date</b>		<b>Projected Date</b>	06/30/2021
<b>Actual Cost</b>	\$0.00	<b>Contractor</b>	
<b>Comments</b>	No Comments		
<b>Assignment</b>	None	<b>New Value</b>	0
<b>Designated Staff</b>			

## Harper Avenue - Rives Avenue To Cul-de-Sac

### Sidewalks - Exterior : Sidewalks , Change in Level

---

#### North Side

#### Change In Level East Of Smallwood Avenue @ 33.949733603346, - 118.134795427322

Sidewalks , Change in Level : Change in Level Non Beveled

#### Finding

There is a change in elevation greater than recommended value.

**On-Site Finding** 0.50 inches

#### Recommendation

Ensure that the change in elevation is within the recommended value.

Recommendation Up to 0.25 inches

#### Costing Info (Estimated)

Remove tripping hazards \$198



**Code Reference** ADA 206, 302

#### Progress

---

<b>Record Number</b>	348531	<b>Resolution</b>	None
<b>Progress</b>	Not_Started	<b>Priority</b>	Two
<b>Actual Date</b>		<b>Projected Date</b>	06/30/2021
<b>Actual Cost</b>	\$0.00	<b>Contractor</b>	
<b>Comments</b>	No Comments		
<b>Assignment</b>	None	<b>New Value</b>	0
<b>Designated Staff</b>			

## Harper Avenue - Rives Avenue To Cul-de-Sac

### Sidewalks - Exterior : Sidewalks , Change in Level

---

#### South Side

#### Change In Level West Of Paramount Boulevard @ 33.949269696450, - 118.134175837040

Sidewalks , Change in Level : Change in Level Non Beveled

#### Finding

There is a change in elevation greater than recommended value.

**On-Site Finding** 0.75 inches

#### Recommendation

Ensure that the change in elevation is within the recommended value.

Recommendation Up to 0.25 inches

#### Costing Info (Estimated)

Remove tripping hazards \$198



**Code Reference** ADA 206, 302

#### Progress

---

<b>Record Number</b>	348509	<b>Resolution</b>	None
<b>Progress</b>	Not_Started	<b>Priority</b>	Two
<b>Actual Date</b>		<b>Projected Date</b>	06/30/2021
<b>Actual Cost</b>	\$0.00	<b>Contractor</b>	
<b>Comments</b>	No Comments	<b>New Value</b>	0
<b>Assignment</b>	None		
<b>Designated Staff</b>			

## Harper Avenue - Rives Avenue To Cul-de-Sac

### Sidewalks - Exterior : Sidewalks , Change in Level

---

#### South Side

#### Change In Level West Of Paramount Boulevard @ 33.949613455040, - 118.134837001562

Sidewalks , Change in Level : Change in Level Non Beveled

#### Finding

There is a change in elevation greater than recommended value.

**On-Site Finding** 0.62 inches

#### Recommendation

Ensure that the change in elevation is within the recommended value.

Recommendation Up to 0.25 inches

#### Costing Info (Estimated)

Remove tripping hazards \$198



**Code Reference** ADA 206, 302

#### Progress

---

<b>Record Number</b>	348504	<b>Resolution</b>	None
<b>Progress</b>	Not_Started	<b>Priority</b>	Two
<b>Actual Date</b>		<b>Projected Date</b>	06/30/2021
<b>Actual Cost</b>	\$0.00	<b>Contractor</b>	
<b>Comments</b>	No Comments	<b>New Value</b>	0
<b>Assignment</b>	None		
<b>Designated Staff</b>			



## Harper Avenue - Rives Avenue To Cul-de-Sac

### Sidewalks - Exterior : Sidewalks , Change in Level

---

#### South Side

#### Change In Level West Of Paramount Boulevard @ 33.949823714464, - 118.135263472795

Sidewalks , Change in Level : Change in Level Non Beveled

#### Finding

There is a change in elevation greater than recommended value.

**On-Site Finding** 0.50 inches

#### Recommendation

Ensure that the change in elevation is within the recommended value.

Recommendation Up to 0.25 inches

#### Costing Info (Estimated)

Remove tripping hazards \$198



**Code Reference** ADA 206, 302

#### Progress

---

<b>Record Number</b>	348503	<b>Resolution</b>	None
<b>Progress</b>	Not_Started	<b>Priority</b>	Two
<b>Actual Date</b>		<b>Projected Date</b>	06/30/2021
<b>Actual Cost</b>	\$0.00	<b>Contractor</b>	
<b>Comments</b>	No Comments		
<b>Assignment</b>	None	<b>New Value</b>	0
<b>Designated Staff</b>			

## Harper Avenue - Rives Avenue To Cul-de-Sac

### Sidewalks - Exterior : Sidewalks , Change in Level

---

#### South Side

#### Change In Level West Of Paramount Boulevard @ 33.950028410970, - 118.135659098625

Sidewalks , Change in Level : Change in Level Non Beveled

#### Finding

There is a change in elevation greater than recommended value.

**On-Site Finding** 0.62 inches

#### Recommendation

Ensure that the change in elevation is within the recommended value.

Recommendation Up to 0.25 inches

#### Costing Info (Estimated)

Remove tripping hazards \$198



**Code Reference** ADA 206, 302

#### Progress

---

<b>Record Number</b>	348510	<b>Resolution</b>	None
<b>Progress</b>	Not_Started	<b>Priority</b>	Two
<b>Actual Date</b>		<b>Projected Date</b>	06/30/2021
<b>Actual Cost</b>	\$0.00	<b>Contractor</b>	
<b>Comments</b>	No Comments	<b>New Value</b>	0
<b>Assignment</b>	None		
<b>Designated Staff</b>			

## Harper Avenue - Rives Avenue To Cul-de-Sac

### Sidewalks - Exterior : Sidewalks , Change in Level

---

#### South Side

#### Change In Level West Of Smallwood Avenue @ 33.950331004903, - 118.136292099953

Sidewalks , Change in Level : Change in Level Non Beveled

#### Finding

There is a change in elevation greater than recommended value.

**On-Site Finding** 0.50 inches

#### Recommendation

Ensure that the change in elevation is within the recommended value.

Recommendation Up to 0.25 inches

#### Costing Info (Estimated)

Remove tripping hazards \$198



**Code Reference** ADA 206, 302

#### Progress

---

<b>Record Number</b>	348506	<b>Resolution</b>	None
<b>Progress</b>	Not_Started	<b>Priority</b>	Two
<b>Actual Date</b>		<b>Projected Date</b>	06/30/2021
<b>Actual Cost</b>	\$0.00	<b>Contractor</b>	
<b>Comments</b>	No Comments		
<b>Assignment</b>	None	<b>New Value</b>	0
<b>Designated Staff</b>			

## Harper Avenue - Rives Avenue To Cul-de-Sac

### Sidewalks - Exterior : Sidewalks , Change in Level

---

#### South Side

#### Change In Level West Of Smallwood Avenue @ 33.950369941544, - 118.136360496283

Sidewalks , Change in Level : Change in Level Non Beveled

#### Finding

There is a change in elevation greater than recommended value.

**On-Site Finding** 0.75 inches

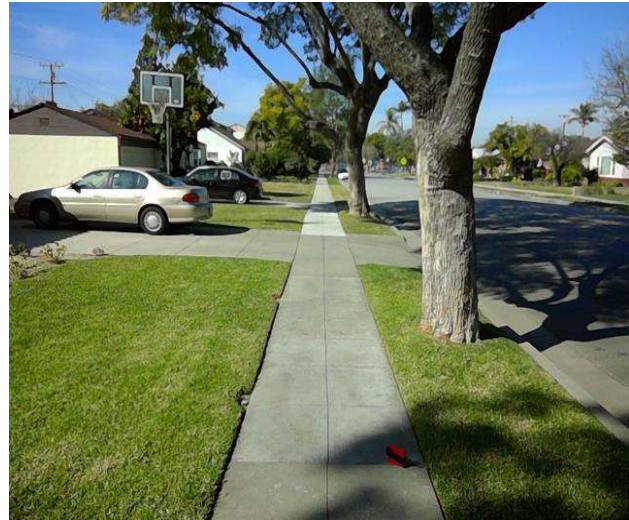
#### Recommendation

Ensure that the change in elevation is within the recommended value.

Recommendation Up to 0.25 inches

#### Costing Info (Estimated)

Remove tripping hazards \$198



**Code Reference** ADA 206, 302

#### Progress

---

<b>Record Number</b>	348508	<b>Resolution</b>	None
<b>Progress</b>	Not_Started	<b>Priority</b>	Two
<b>Actual Date</b>		<b>Projected Date</b>	06/30/2021
<b>Actual Cost</b>	\$0.00	<b>Contractor</b>	
<b>Comments</b>	No Comments	<b>New Value</b>	0
<b>Assignment</b>	None		
<b>Designated Staff</b>			



## Harper Avenue - Rives Avenue To Cul-de-Sac

### Sidewalks - Exterior : Sidewalks , Change in Level

---

#### South Side

#### Change In Level West Of Smallwood Avenue @ 33.950574636736, - 118.136769533157

Sidewalks , Change in Level : Change in Level Non Beveled

#### Finding

There is a change in elevation greater than recommended value.

**On-Site Finding** 0.75 inches

#### Recommendation

Ensure that the change in elevation is within the recommended value.

Recommendation Up to 0.25 inches

#### Costing Info (Estimated)

Remove tripping hazards \$198



**Code Reference** ADA 206, 302

#### Progress

---

<b>Record Number</b>	348505	<b>Resolution</b>	None
<b>Progress</b>	Not_Started	<b>Priority</b>	Two
<b>Actual Date</b>		<b>Projected Date</b>	06/30/2021
<b>Actual Cost</b>	\$0.00	<b>Contractor</b>	
<b>Comments</b>	No Comments		
<b>Assignment</b>	None	<b>New Value</b>	0
<b>Designated Staff</b>			

Harper Avenue - Rives Avenue To Cul-de-Sac

Curb Ramps - Exterior : Curb Ramp

**Northwest Corner Of Paramount Boulevard @ 33.949077235534, - 118.133489191532**

Curb Ramp : No Detectable Warnings

**Finding**

The curb ramp does not provide a detectable warning surface which includes truncated domes.

**On-Site Finding** Not Found

**Recommendation**

Provide compliant detectable warnings to surface.

Recommendation See Recommendation

**Costing Info (Estimated)**

Provide detectable warning to surface \$248



**Code Reference** CA 11B-406.5.12

**Progress**

<b>Record Number</b>	348569	<b>Resolution</b>	None
<b>Progress</b>	Not_Started	<b>Priority</b>	Seven
<b>Actual Date</b>		<b>Projected Date</b>	06/30/2032
<b>Actual Cost</b>	\$0.00	<b>Contractor</b>	
<b>Comments</b>	No Comments	<b>New Value</b>	0
<b>Assignment</b>	None		
<b>Designated Staff</b>			

**Harper Avenue - Rives Avenue To Cul-de-Sac**

**Curb Ramps - Exterior : Curb Ramp**

**Northwest Corner Of Paramount Boulevard @ 33.949077235534, - 118.133489191532**

Curb Ramp : Not Wholly Contained Within The Marked Crossing

**Finding**

The curb ramp is not wholly contained within the marked crossing.

**On-Site Finding** Not Found

**Recommendation**

Provide a marked crossing on the path of travel; make certain the curb ramp is wholly contained within the marked crossing.

Recommendation See Recommendation

**Costing Info (Estimated)**

Install crosswalk \$800



**Code Reference** ADA 406, 406.5

**Progress**

<b>Record Number</b>	348570	<b>Resolution</b>	None
<b>Progress</b>	Not_Started	<b>Priority</b>	Seven
<b>Actual Date</b>		<b>Projected Date</b>	06/30/2032
<b>Actual Cost</b>	\$0.00	<b>Contractor</b>	
<b>Comments</b>	No Comments	<b>New Value</b>	0
<b>Assignment</b>	None		
<b>Designated Staff</b>			

**Harper Avenue - Rives Avenue To Cul-de-Sac**

**Curb Ramps - Exterior : Curb Ramp**

**Northwest Corner Of Paramount Boulevard @ 33.949077235534, - 118.133489191532**

Curb Ramp : Curb Ramp Slope

**Finding**

The running slope is greater than allowed.

**On-Site Finding** 9.40 percent

**Recommendation**

Provide a compliant curb ramp.

Recommendation Up to 8.33 percent

**Costing Info (Estimated)**

Install curb ramp \$1,300



**Code Reference** ADA 406, 406.1, 405.2, CA 11B-406

**Progress**

<b>Record Number</b>	348571	<b>Resolution</b>	None
<b>Progress</b>	Not_Started	<b>Priority</b>	Seven
<b>Actual Date</b>		<b>Projected Date</b>	06/30/2032
<b>Actual Cost</b>	\$0.00	<b>Contractor</b>	
<b>Comments</b>	No Comments	<b>New Value</b>	0
<b>Assignment</b>	None		
<b>Designated Staff</b>			



## Harper Avenue - Rives Avenue To Cul-de-Sac

### Curb Ramps - Exterior : Curb Ramp

#### Northwest Corner Of Paramount Boulevard @ 33.949077235534, - 118.133489191532

Curb Ramp : Side Flare Slope

#### Finding

The slope of the curb ramp side flare is greater than allowed.

**On-Site Finding** 12.00 percent

#### Recommendation

Provide curb ramp side flares with a compliant slope.

Recommendation Up to 10.00 percent

#### Costing Info (Estimated)

Install flared sides \$1,300



**Code Reference** ADA 406, 406.3, CA 11B-406.2.2

### Progress

<b>Record Number</b>	348572	<b>Resolution</b>	None
<b>Progress</b>	Not_Started	<b>Priority</b>	Seven
<b>Actual Date</b>		<b>Projected Date</b>	06/30/2032
<b>Actual Cost</b>	\$0.00	<b>Contractor</b>	
<b>Comments</b>	No Comments	<b>New Value</b>	0
<b>Assignment</b>	None		
<b>Designated Staff</b>			

Harper Avenue - Rives Avenue To Cul-de-Sac

Curb Ramps - Exterior : Curb Ramp , Landings and Transitions

Northwest Corner Of Paramount Boulevard @ 33.949077235534, - 118.133489191532

Top Landing

Curb Ramp , Landings and Transitions : Top Landing Slope

Finding

The slope at the top landing is greater than allowed.

On-Site Finding 2.50 percent

Recommendation

Provide a top landing surface that does not exceed the maximum slope and cross slope. Provide a sufficient maneuvering clearance that does not accumulate water.

Recommendation Up to 2.08 percent

Costing Info (Estimated)

Provide compliant landing \$1,260



Code Reference ADA 402, 406.4, 403.3, 406.1,CA 11B-406.5.3

Progress

<b>Record Number</b>	348573	<b>Resolution</b>	None
<b>Progress</b>	Not_Started	<b>Priority</b>	Seven
<b>Actual Date</b>		<b>Projected Date</b>	06/30/2032
<b>Actual Cost</b>	\$0.00	<b>Contractor</b>	
<b>Comments</b>	No Comments		
<b>Assignment</b>	None	<b>New Value</b>	0
<b>Designated Staff</b>			

**Harper Avenue - Rives Avenue To Cul-de-Sac**

**Curb Ramps - Exterior : Curb Ramp , Landings and Transitions**

---

**Northwest Corner Of Paramount Boulevard @ 33.949077235534, - 118.133489191532**

**Top Landing**

**Finding**

There is not enough top landing clear length.

**On-Site Finding** 32.00 inches

**Recommendation**

Provide a level top landing with enough clear length.

Recommendation At least 48.00 inches

**Costing Info (Estimated)**

Provide compliant landing \$240

Curb Ramp , Landings and Transitions : Top Landing Clear Length - Landings



**Code Reference** ADA 406, 406.4,CA 11B-406.5.3

**Progress**

---

<b>Record Number</b>	348574	<b>Resolution</b>	None
<b>Progress</b>	Not_Started	<b>Priority</b>	Seven
<b>Actual Date</b>		<b>Projected Date</b>	06/30/2032
<b>Actual Cost</b>	\$0.00	<b>Contractor</b>	
<b>Comments</b>	No Comments		
<b>Assignment</b>	None	<b>New Value</b>	0
<b>Designated Staff</b>			

Harper Avenue - Rives Avenue To Cul-de-Sac

Curb Ramps - Exterior : Curb Ramp

**Southeast Corner Of Smallwood Avenue - 1st @ 33.950205295054, - 118.136046677828**

Curb Ramp : No Detectable Warnings

**Finding**

The curb ramp does not provide a detectable warning surface which includes truncated domes.

**On-Site Finding** Not Found

**Recommendation**

Provide compliant detectable warnings to surface.

Recommendation See Recommendation

**Costing Info (Estimated)**

Provide detectable warning to surface \$248



**Code Reference** CA 11B-406.5.12

**Progress**

<b>Record Number</b>	348558	<b>Resolution</b>	None
<b>Progress</b>	Not_Started	<b>Priority</b>	Seven
<b>Actual Date</b>		<b>Projected Date</b>	06/30/2032
<b>Actual Cost</b>	\$0.00	<b>Contractor</b>	
<b>Comments</b>	No Comments	<b>New Value</b>	0
<b>Assignment</b>	None		
<b>Designated Staff</b>			



**Harper Avenue - Rives Avenue To Cul-de-Sac**

**Curb Ramps - Exterior : Curb Ramp**

**Southeast Corner Of Smallwood Avenue - 1st @ 33.950205295054, - 118.136046677828**

Curb Ramp : Not Wholly Contained Within The Marked Crossing

**Finding**

The curb ramp is not wholly contained within the marked crossing.

**On-Site Finding** Not Found

**Recommendation**

Provide a marked crossing on the path of travel; make certain the curb ramp is wholly contained within the marked crossing.

Recommendation See Recommendation

**Costing Info (Estimated)**

Install crosswalk \$800



**Code Reference** ADA 406, 406.5

**Progress**

<b>Record Number</b>	348559	<b>Resolution</b>	None
<b>Progress</b>	Not_Started	<b>Priority</b>	Seven
<b>Actual Date</b>		<b>Projected Date</b>	06/30/2032
<b>Actual Cost</b>	\$0.00	<b>Contractor</b>	
<b>Comments</b>	No Comments	<b>New Value</b>	0
<b>Assignment</b>	None		
<b>Designated Staff</b>			

## Harper Avenue - Rives Avenue To Cul-de-Sac

### Curb Ramps - Exterior : Curb Ramp

#### **Southeast Corner Of Smallwood Avenue - 1st @ 33.950205295054, - 118.136046677828**

Curb Ramp : Curb Ramp Width

#### **Finding**

The width of the curb ramp is less than required.

**On-Site Finding** 47.50 inches

#### **Recommendation**

Provide a compliant curb ramp.

Recommendation At least 48.00 inches

#### **Costing Info (Estimated)**

Install curb ramp \$1,300



**Code Reference** ADA 406, 406.1, 405.5, CA 11B-406.5.2

### **Progress**

<b>Record Number</b>	348560	<b>Resolution</b>	None
<b>Progress</b>	Not_Started	<b>Priority</b>	Seven
<b>Actual Date</b>		<b>Projected Date</b>	06/30/2032
<b>Actual Cost</b>	\$0.00	<b>Contractor</b>	
<b>Comments</b>	No Comments	<b>New Value</b>	0
<b>Assignment</b>	None		
<b>Designated Staff</b>			

Harper Avenue - Rives Avenue To Cul-de-Sac

Curb Ramps - Exterior : Curb Ramp

**Southeast Corner Of Smallwood Avenue - 1st @ 33.950205295054, - 118.136046677828**

Bottom Landing

Curb Ramp : Bottom Landing Slope

**Finding**

The bottom landing of the curb ramp is on the street, and the slope of the bottom landing is not compliant.

**On-Site Finding** 10.60 percent

**Recommendation**

Ensure the bottom landing slope is compliant and provides a smooth transition.

Recommendation Up to 5.00 percent

**Costing Info (Estimated)**

Repave landing \$1,260



**Code Reference** ADA 406, 406.2, CA 11B-406.5.8

**Progress**

<b>Record Number</b>	348561	<b>Resolution</b>	None
<b>Progress</b>	Not_Started	<b>Priority</b>	Seven
<b>Actual Date</b>		<b>Projected Date</b>	06/30/2032
<b>Actual Cost</b>	\$0.00	<b>Contractor</b>	
<b>Comments</b>	No Comments		
<b>Assignment</b>	None	<b>New Value</b>	0
<b>Designated Staff</b>			

**Harper Avenue - Rives Avenue To Cul-de-Sac**

**Curb Ramps - Exterior : Curb Ramp , Landings and Transitions**

---

**Southeast Corner Of Smallwood Avenue - 1st @ 33.950205295054, - 118.136046677828**

**Top Landing**

Curb Ramp , Landings and Transitions : Top Landing Slope

**Finding**

The slope at the top landing is greater than allowed.

**On-Site Finding** 3.00 percent

**Recommendation**

Provide a top landing surface that does not exceed the maximum slope and cross slope. Provide a sufficient maneuvering clearance that does not accumulate water.

Recommendation Up to 2.08 percent

**Costing Info (Estimated)**

Provide compliant landing \$1,260



**Code Reference** ADA 402, 406.4, 403.3, 406.1, CA 11B-406.5.3

**Progress**

---

<b>Record Number</b>	348562	<b>Resolution</b>	None
<b>Progress</b>	Not_Started	<b>Priority</b>	Seven
<b>Actual Date</b>		<b>Projected Date</b>	06/30/2032
<b>Actual Cost</b>	\$0.00	<b>Contractor</b>	
<b>Comments</b>	No Comments	<b>New Value</b>	0
<b>Assignment</b>	None		
<b>Designated Staff</b>			

**Harper Avenue - Rives Avenue To Cul-de-Sac**

**Curb Ramps - Exterior : Curb Ramp , Landings and Transitions**

**Southeast Corner Of Smallwood Avenue - 1st @ 33.950205295054, - 118.136046677828**

**Top Landing**

Curb Ramp , Landings and Transitions : Top Landing Clear Length - Landings

**Finding**

There is not enough top landing clear length.

**On-Site Finding** 43.00 inches

**Recommendation**

Provide a level top landing with enough clear length.

Recommendation At least 48.00 inches

**Costing Info (Estimated)**

Provide compliant landing \$240



**Code Reference** ADA 406, 406.4,CA 11B-406.5.3

**Progress**

<b>Record Number</b>	348563	<b>Resolution</b>	None
<b>Progress</b>	Not_Started	<b>Priority</b>	Seven
<b>Actual Date</b>		<b>Projected Date</b>	06/30/2032
<b>Actual Cost</b>	\$0.00	<b>Contractor</b>	
<b>Comments</b>	No Comments	<b>New Value</b>	0
<b>Assignment</b>	None		
<b>Designated Staff</b>			



## Harper Avenue - Rives Avenue To Cul-de-Sac

### Curb Ramps - Exterior : Curb Ramp

**Southeast Corner Of Smallwood Avenue - 2nd @ 33.950205295054, - 118.136046677828**

Curb Ramp : No Detectable Warnings

#### Finding

The curb ramp does not provide a detectable warning surface which includes truncated domes.

**On-Site Finding** Not Found

#### Recommendation

Provide compliant detectable warnings to surface.

Recommendation See Recommendation

#### Costing Info (Estimated)

Provide detectable warning to surface \$248



**Code Reference** CA 11B-406.5.12

### Progress

<b>Record Number</b>	348544	<b>Resolution</b>	None
<b>Progress</b>	Not_Started	<b>Priority</b>	Seven
<b>Actual Date</b>		<b>Projected Date</b>	06/30/2032
<b>Actual Cost</b>	\$0.00	<b>Contractor</b>	
<b>Comments</b>	No Comments	<b>New Value</b>	0
<b>Assignment</b>	None		
<b>Designated Staff</b>			

**Harper Avenue - Rives Avenue To Cul-de-Sac**

**Curb Ramps - Exterior : Curb Ramp**

**Southeast Corner Of Smallwood Avenue - 2nd @ 33.950205295054, - 118.136046677828**

Curb Ramp : Not Wholly Contained Within The Marked Crossing

**Finding**

The curb ramp is not wholly contained within the marked crossing.

**On-Site Finding** Not Found

**Recommendation**

Provide a marked crossing on the path of travel; make certain the curb ramp is wholly contained within the marked crossing.

Recommendation See Recommendation

**Costing Info (Estimated)**

Install crosswalk \$800



**Code Reference** ADA 406, 406.5

**Progress**

<b>Record Number</b>	348545	<b>Resolution</b>	None
<b>Progress</b>	Not_Started	<b>Priority</b>	Seven
<b>Actual Date</b>		<b>Projected Date</b>	06/30/2032
<b>Actual Cost</b>	\$0.00	<b>Contractor</b>	
<b>Comments</b>	No Comments	<b>New Value</b>	0
<b>Assignment</b>	None		
<b>Designated Staff</b>			

**Harper Avenue - Rives Avenue To Cul-de-Sac**

**Curb Ramps - Exterior : Curb Ramp**

**Southeast Corner Of Smallwood Avenue - 2nd @ 33.950205295054, - 118.136046677828**

Curb Ramp : Parallel Curb Ramp Left Side Width

**Finding**

The width of the curb ramp is less than required.

**On-Site Finding** 43.00 inches

**Recommendation**

Provide a compliant curb ramp.

Recommendation At least 48.00 inches

**Costing Info (Estimated)**

Install curb ramp \$1,300



**Code Reference** ADA 406.1,CA 11B-406.5.2,CA 11B-406

**Progress**

<b>Record Number</b>	348546	<b>Resolution</b>	None
<b>Progress</b>	Not_Started	<b>Priority</b>	Seven
<b>Actual Date</b>		<b>Projected Date</b>	06/30/2032
<b>Actual Cost</b>	\$0.00	<b>Contractor</b>	
<b>Comments</b>	No Comments	<b>New Value</b>	0
<b>Assignment</b>	None		
<b>Designated Staff</b>			

## Harper Avenue - Rives Avenue To Cul-de-Sac

### Curb Ramps - Exterior : Curb Ramp

#### **Southeast Corner Of Smallwood Avenue - 2nd @ 33.950205295054, - 118.136046677828**

Curb Ramp : Parallel Curb Ramp Right Side Width

#### **Finding**

The width of the curb ramp is less than required.

**On-Site Finding** 45.50 inches

#### **Recommendation**

Provide a compliant curb ramp.

Recommendation At least 48.00 inches

#### **Costing Info (Estimated)**

Install curb ramp \$1,300



**Code Reference** ADA 406.1,CA 11B-406.5.2,CA 11B-406

### **Progress**

<b>Record Number</b>	348547	<b>Resolution</b>	None
<b>Progress</b>	Not_Started	<b>Priority</b>	Seven
<b>Actual Date</b>		<b>Projected Date</b>	06/30/2032
<b>Actual Cost</b>	\$0.00	<b>Contractor</b>	
<b>Comments</b>	No Comments	<b>New Value</b>	0
<b>Assignment</b>	None		
<b>Designated Staff</b>			

Harper Avenue - Rives Avenue To Cul-de-Sac

Curb Ramps - Exterior : Curb Ramp , Landings and Transitions

**Southeast Corner Of Smallwood Avenue - 2nd @ 33.950205295054, - 118.136046677828**

Bottom Landing

Curb Ramp , Landings and Transitions : Bottom Landing Slope

**Finding**

The slope at the bottom landing is greater than allowed.

**On-Site Finding** 3.00 percent

**Recommendation**

Provide a compliant bottom landing that does not exceed the maximum slope requirements.

Recommendation Up to 2.08 percent

**Costing Info (Estimated)**

Provide compliant landing \$240



**Code Reference** ADA 402, 406.4, 406.2, 403.3, 406.1, CA 11B-406.5.3

**Progress**

<b>Record Number</b>	348548	<b>Resolution</b>	None
<b>Progress</b>	Not_Started	<b>Priority</b>	Seven
<b>Actual Date</b>		<b>Projected Date</b>	06/30/2032
<b>Actual Cost</b>	\$0.00	<b>Contractor</b>	
<b>Comments</b>	No Comments	<b>New Value</b>	0
<b>Assignment</b>	None		
<b>Designated Staff</b>			



## Harper Avenue - Rives Avenue To Cul-de-Sac

### Curb Ramps - Exterior : Curb Ramp , Landings and Transitions

---

#### **Southeast Corner Of Smallwood Avenue - 2nd @ 33.950205295054, - 118.136046677828**

##### Top Landing

##### Finding

The slope at the top landing is greater than allowed.

**On-Site Finding** 3.30 percent

##### Recommendation

Provide a top landing surface that does not exceed the maximum slope and cross slope. Provide a sufficient maneuvering clearance that does not accumulate water.

Recommendation Up to 2.08 percent

##### Costing Info (Estimated)

Provide compliant landing \$1,260

Curb Ramp , Landings and Transitions : Top Landing Slope



**Code Reference** ADA 402, 406.4, 403.3, 406.1, CA 11B-406.5.3

### Progress

---

<b>Record Number</b>	348549	<b>Resolution</b>	None
<b>Progress</b>	Not_Started	<b>Priority</b>	Seven
<b>Actual Date</b>		<b>Projected Date</b>	06/30/2032
<b>Actual Cost</b>	\$0.00	<b>Contractor</b>	
<b>Comments</b>	No Comments	<b>New Value</b>	0
<b>Assignment</b>	None		
<b>Designated Staff</b>			

## Harper Avenue - Rives Avenue To Cul-de-Sac

### Curb Ramps - Exterior : Curb Ramp , Landings and Transitions

---

#### **Southeast Corner Of Smallwood Avenue - 2nd @ 33.950205295054, - 118.136046677828**

##### Top Landing

##### Finding

The slope at the top landing is greater than allowed.

**On-Site Finding** 4.00 percent

##### Recommendation

Provide a top landing surface that does not exceed the maximum slope and cross slope. Provide a sufficient maneuvering clearance that does not accumulate water.

Recommendation Up to 2.08 percent

##### Costing Info (Estimated)

Provide compliant landing \$1,260

Curb Ramp , Landings and Transitions : Top Landing Right Side Slope - Parallel Curb Ramp



**Code Reference** ADA 406.4, 403.3, 406.1, CA 11B-406.5.3

### Progress

---

<b>Record Number</b>	348550	<b>Resolution</b>	None
<b>Progress</b>	Not_Started	<b>Priority</b>	Seven
<b>Actual Date</b>		<b>Projected Date</b>	06/30/2032
<b>Actual Cost</b>	\$0.00	<b>Contractor</b>	
<b>Comments</b>	No Comments		
<b>Assignment</b>	None	<b>New Value</b>	0
<b>Designated Staff</b>			

Harper Avenue - Rives Avenue To Cul-de-Sac

Curb Ramps - Exterior : Curb Ramp

**Southwest Corner Of Paramount Boulevard @ 33.948942623882, - 118.133577704430**

Curb Ramp : No Detectable Warnings

**Finding**

The curb ramp does not provide a detectable warning surface which includes truncated domes.

**On-Site Finding** Not Found

**Recommendation**

Provide compliant detectable warnings to surface.

Recommendation See Recommendation

**Costing Info (Estimated)**

Provide detectable warning to surface \$248



**Code Reference** CA 11B-406.5.12

**Progress**

<b>Record Number</b>	348551	<b>Resolution</b>	None
<b>Progress</b>	Not_Started	<b>Priority</b>	Seven
<b>Actual Date</b>		<b>Projected Date</b>	06/30/2032
<b>Actual Cost</b>	\$0.00	<b>Contractor</b>	
<b>Comments</b>	No Comments	<b>New Value</b>	0
<b>Assignment</b>	None		
<b>Designated Staff</b>			

**Harper Avenue - Rives Avenue To Cul-de-Sac**

**Curb Ramps - Exterior : Curb Ramp**

---

**Southwest Corner Of Paramount Boulevard @ 33.948942623882, - 118.133577704430**

Curb Ramp : Not Wholly Contained Within The Marked Crossing

**Finding**

The curb ramp is not wholly contained within the marked crossing.

**On-Site Finding** Not Found

**Recommendation**

Provide a marked crossing on the path of travel; make certain the curb ramp is wholly contained within the marked crossing.

Recommendation See Recommendation

**Costing Info (Estimated)**

Install crosswalk \$800



**Code Reference** ADA 406, 406.5

**Progress**

---

<b>Record Number</b>	348552	<b>Resolution</b>	None
<b>Progress</b>	Not_Started	<b>Priority</b>	Seven
<b>Actual Date</b>		<b>Projected Date</b>	06/30/2032
<b>Actual Cost</b>	\$0.00	<b>Contractor</b>	
<b>Comments</b>	No Comments		
<b>Assignment</b>	None	<b>New Value</b>	0
<b>Designated Staff</b>			

**Harper Avenue - Rives Avenue To Cul-de-Sac**

**Curb Ramps - Exterior : Curb Ramp**

**Southwest Corner Of Paramount Boulevard @ 33.948942623882, - 118.133577704430**

Curb Ramp : Curb Ramp Slope

**Finding**

The running slope is greater than allowed.

**On-Site Finding** 12.30 percent

**Recommendation**

Provide a compliant curb ramp.

Recommendation Up to 8.33 percent

**Costing Info (Estimated)**

Install curb ramp \$1,300



**Code Reference** ADA 406, 406.1, 405.2, CA 11B-406

**Progress**

<b>Record Number</b>	348553	<b>Resolution</b>	None
<b>Progress</b>	Not_Started	<b>Priority</b>	Seven
<b>Actual Date</b>		<b>Projected Date</b>	06/30/2032
<b>Actual Cost</b>	\$0.00	<b>Contractor</b>	
<b>Comments</b>	No Comments		
<b>Assignment</b>	None	<b>New Value</b>	0
<b>Designated Staff</b>			



Harper Avenue - Rives Avenue To Cul-de-Sac

Curb Ramps - Exterior : Curb Ramp

**Southwest Corner Of Paramount Boulevard @ 33.948942623882, - 118.133577704430**

Curb Ramp : Side Flare Slope

**Finding**

The slope of the curb ramp side flare is greater than allowed.

**On-Site Finding** 16.90 percent

**Recommendation**

Provide curb ramp side flares with a compliant slope.

Recommendation Up to 10.00 percent

**Costing Info (Estimated)**

Install flared sides \$1,300



**Code Reference** ADA 406, 406.3,CA 11B-406.2.2

**Progress**

<b>Record Number</b>	348554	<b>Resolution</b>	None
<b>Progress</b>	Not_Started	<b>Priority</b>	Seven
<b>Actual Date</b>		<b>Projected Date</b>	06/30/2032
<b>Actual Cost</b>	\$0.00	<b>Contractor</b>	
<b>Comments</b>	No Comments	<b>New Value</b>	0
<b>Assignment</b>	None		
<b>Designated Staff</b>			

**Harper Avenue - Rives Avenue To Cul-de-Sac**

**Curb Ramps - Exterior : Curb Ramp , Landings and Transitions**

**Southwest Corner Of Paramount Boulevard @ 33.948942623882, - 118.133577704430**

**Bottom Landing**

**Finding**

The transition from the bottom of the curb ramp to the walk, gutter, or street is abrupt.

**On-Site Finding** Not Beveled

**Recommendation**

Patch the transition area at the bottom of the curb ramp so that the transition is flush and free of abrupt changes.

Recommendation See Recommendation

**Costing Info (Estimated)**

Patch lip at curb ramp \$255

Curb Ramp , Landings and Transitions : Bottom Landing Change in Level - Curb Ramps



**Code Reference** ADA 302, 406.2

**Progress**

<b>Record Number</b>	348555	<b>Resolution</b>	None
<b>Progress</b>	Not_Started	<b>Priority</b>	Seven
<b>Actual Date</b>		<b>Projected Date</b>	06/30/2032
<b>Actual Cost</b>	\$0.00	<b>Contractor</b>	
<b>Comments</b>	No Comments	<b>New Value</b>	0
<b>Assignment</b>	None		
<b>Designated Staff</b>			

## Harper Avenue - Rives Avenue To Cul-de-Sac

### Curb Ramps - Exterior : Curb Ramp , Landings and Transitions

---

#### Southwest Corner Of Paramount Boulevard @ 33.948942623882, - 118.133577704430

##### Top Landing

##### Finding

The slope at the top landing is greater than allowed.

**On-Site Finding** 3.60 percent

##### Recommendation

Provide a top landing surface that does not exceed the maximum slope and cross slope. Provide a sufficient maneuvering clearance that does not accumulate water.

Recommendation Up to 2.08 percent

##### Costing Info (Estimated)

Provide compliant landing \$1,260

Curb Ramp , Landings and Transitions : Top Landing Slope



**Code Reference** ADA 402, 406.4, 403.3, 406.1, CA 11B-406.5.3

### Progress

---

<b>Record Number</b>	348556	<b>Resolution</b>	None
<b>Progress</b>	Not_Started	<b>Priority</b>	Seven
<b>Actual Date</b>		<b>Projected Date</b>	06/30/2032
<b>Actual Cost</b>	\$0.00	<b>Contractor</b>	
<b>Comments</b>	No Comments		
<b>Assignment</b>	None	<b>New Value</b>	0
<b>Designated Staff</b>			

**Harper Avenue - Rives Avenue To Cul-de-Sac**

**Curb Ramps - Exterior : Curb Ramp , Landings and Transitions**

**Southwest Corner Of Paramount Boulevard @ 33.948942623882, - 118.133577704430**

**Top Landing**

**Finding**

There is not enough top landing clear length.

**On-Site Finding** 25.50 inches

**Recommendation**

Provide a level top landing with enough clear length.

Recommendation At least 48.00 inches

**Costing Info (Estimated)**

Provide compliant landing \$240

Curb Ramp , Landings and Transitions : Top Landing Clear Length - Landings



**Code Reference** ADA 406, 406.4,CA 11B-406.5.3

**Progress**

<b>Record Number</b>	348557	<b>Resolution</b>	None
<b>Progress</b>	Not_Started	<b>Priority</b>	Seven
<b>Actual Date</b>		<b>Projected Date</b>	06/30/2032
<b>Actual Cost</b>	\$0.00	<b>Contractor</b>	
<b>Comments</b>	No Comments	<b>New Value</b>	0
<b>Assignment</b>	None		
<b>Designated Staff</b>			

Harper Avenue - Rives Avenue To Cul-de-Sac

Curb Ramps - Exterior : Curb Ramp

**Southwest Corner Of Smallwood Avenue - 1st @ 33.950303193005, - 118.136200904846**

Curb Ramp : No Detectable Warnings

**Finding**

The curb ramp does not provide a detectable warning surface which includes truncated domes.

**On-Site Finding** Not Found

**Recommendation**

Provide compliant detectable warnings to surface.

Recommendation See Recommendation

**Costing Info (Estimated)**

Provide detectable warning to surface \$248



**Code Reference** CA 11B-406.5.12

**Progress**

<b>Record Number</b>	348564	<b>Resolution</b>	None
<b>Progress</b>	Not_Started	<b>Priority</b>	Seven
<b>Actual Date</b>		<b>Projected Date</b>	06/30/2032
<b>Actual Cost</b>	\$0.00	<b>Contractor</b>	
<b>Comments</b>	No Comments	<b>New Value</b>	0
<b>Assignment</b>	None		
<b>Designated Staff</b>			



**Harper Avenue - Rives Avenue To Cul-de-Sac**

**Curb Ramps - Exterior : Curb Ramp**

**Southwest Corner Of Smallwood Avenue - 1st @ 33.950303193005, - 118.136200904846**

Curb Ramp : Not Wholly Contained Within The Marked Crossing

**Finding**

The curb ramp is not wholly contained within the marked crossing.

**On-Site Finding** Not Found

**Recommendation**

Provide a marked crossing on the path of travel; make certain the curb ramp is wholly contained within the marked crossing.

Recommendation See Recommendation

**Costing Info (Estimated)**

Install crosswalk \$800



**Code Reference** ADA 406, 406.5

**Progress**

<b>Record Number</b>	348565	<b>Resolution</b>	None
<b>Progress</b>	Not_Started	<b>Priority</b>	Seven
<b>Actual Date</b>		<b>Projected Date</b>	06/30/2032
<b>Actual Cost</b>	\$0.00	<b>Contractor</b>	
<b>Comments</b>	No Comments	<b>New Value</b>	0
<b>Assignment</b>	None		
<b>Designated Staff</b>			

**Harper Avenue - Rives Avenue To Cul-de-Sac**

**Curb Ramps - Exterior : Curb Ramp**

**Southwest Corner Of Smallwood Avenue - 1st @ 33.950303193005, - 118.136200904846**

Curb Ramp : Curb Ramp Slope

**Finding**

The running slope is greater than allowed.

**On-Site Finding** 9.30 percent

**Recommendation**

Provide a compliant curb ramp.

Recommendation Up to 8.33 percent

**Costing Info (Estimated)**

Install curb ramp \$1,300



**Code Reference** ADA 406, 406.1, 405.2, CA 11B-406

**Progress**

<b>Record Number</b>	348566	<b>Resolution</b>	None
<b>Progress</b>	Not_Started	<b>Priority</b>	Seven
<b>Actual Date</b>		<b>Projected Date</b>	06/30/2032
<b>Actual Cost</b>	\$0.00	<b>Contractor</b>	
<b>Comments</b>	No Comments	<b>New Value</b>	0
<b>Assignment</b>	None		
<b>Designated Staff</b>			

Harper Avenue - Rives Avenue To Cul-de-Sac

Curb Ramps - Exterior : Curb Ramp

**Southwest Corner Of Smallwood Avenue - 1st @ 33.950303193005, - 118.136200904846**

Bottom Landing

Curb Ramp : Bottom Landing Slope

**Finding**

The bottom landing of the curb ramp is on the street, and the slope of the bottom landing is not compliant.

**On-Site Finding** 8.70 percent

**Recommendation**

Ensure the bottom landing slope is compliant and provides a smooth transition.

Recommendation Up to 5.00 percent

**Costing Info (Estimated)**

Repave landing \$1,260



**Code Reference** ADA 406, 406.2, CA 11B-406.5.8

**Progress**

<b>Record Number</b>	348567	<b>Resolution</b>	None
<b>Progress</b>	Not_Started	<b>Priority</b>	Seven
<b>Actual Date</b>		<b>Projected Date</b>	06/30/2032
<b>Actual Cost</b>	\$0.00	<b>Contractor</b>	
<b>Comments</b>	No Comments	<b>New Value</b>	0
<b>Assignment</b>	None		
<b>Designated Staff</b>			

Harper Avenue - Rives Avenue To Cul-de-Sac

Curb Ramps - Exterior : Curb Ramp , Landings and Transitions

**Southwest Corner Of Smallwood Avenue - 1st @ 33.950303193005, - 118.136200904846**

Top Landing

Curb Ramp , Landings and Transitions : Top Landing Slope

**Finding**

The slope at the top landing is greater than allowed.

**On-Site Finding** 3.40 percent

**Recommendation**

Provide a top landing surface that does not exceed the maximum slope and cross slope. Provide a sufficient maneuvering clearance that does not accumulate water.

Recommendation Up to 2.08 percent

**Costing Info (Estimated)**

Provide compliant landing \$1,260



**Code Reference** ADA 402, 406.4, 403.3, 406.1, CA 11B-406.5.3

**Progress**

<b>Record Number</b>	348568	<b>Resolution</b>	None
<b>Progress</b>	Not_Started	<b>Priority</b>	Seven
<b>Actual Date</b>		<b>Projected Date</b>	06/30/2032
<b>Actual Cost</b>	\$0.00	<b>Contractor</b>	
<b>Comments</b>	No Comments	<b>New Value</b>	0
<b>Assignment</b>	None		
<b>Designated Staff</b>			

**Harper Avenue - Rives Avenue To Cul-de-Sac**

**Curb Ramps - Exterior : Curb Ramp**

**Southwest Corner Of Smallwood Avenue - 2nd @ 33.950303193005, - 118.136200904846**

Curb Ramp : No Detectable Warnings

**Finding**

The curb ramp does not provide a detectable warning surface which includes truncated domes.

**On-Site Finding** Not Found

**Recommendation**

Provide compliant detectable warnings to surface.

Recommendation See Recommendation

**Costing Info (Estimated)**

Provide detectable warning to surface \$248



**Code Reference** CA 11B-406.5.12

**Progress**

<b>Record Number</b>	348538	<b>Resolution</b>	None
<b>Progress</b>	Not_Started	<b>Priority</b>	Seven
<b>Actual Date</b>		<b>Projected Date</b>	06/30/2032
<b>Actual Cost</b>	\$0.00	<b>Contractor</b>	
<b>Comments</b>	No Comments	<b>New Value</b>	0
<b>Assignment</b>	None		
<b>Designated Staff</b>			



**Harper Avenue - Rives Avenue To Cul-de-Sac**

**Curb Ramps - Exterior : Curb Ramp**

**Southwest Corner Of Smallwood Avenue - 2nd @ 33.950303193005, - 118.136200904846**

Curb Ramp : Not Wholly Contained Within The Marked Crossing

**Finding**

The curb ramp is not wholly contained within the marked crossing.

**On-Site Finding** Not Found

**Recommendation**

Provide a marked crossing on the path of travel; make certain the curb ramp is wholly contained within the marked crossing.

Recommendation See Recommendation

**Costing Info (Estimated)**

Install crosswalk \$800



**Code Reference** ADA 406, 406.5

**Progress**

<b>Record Number</b>	348539	<b>Resolution</b>	None
<b>Progress</b>	Not_Started	<b>Priority</b>	Seven
<b>Actual Date</b>		<b>Projected Date</b>	06/30/2032
<b>Actual Cost</b>	\$0.00	<b>Contractor</b>	
<b>Comments</b>	No Comments	<b>New Value</b>	0
<b>Assignment</b>	None		
<b>Designated Staff</b>			

**Harper Avenue - Rives Avenue To Cul-de-Sac**

**Curb Ramps - Exterior : Curb Ramp**

**Southwest Corner Of Smallwood Avenue - 2nd @ 33.950303193005, - 118.136200904846**

Curb Ramp : Parallel Curb Ramp Left Side Slope

**Finding**

The running slope is greater than allowed.

**On-Site Finding** 9.10 percent

**Recommendation**

Provide a compliant curb ramp.

Recommendation Up to 8.33 percent

**Costing Info (Estimated)**

Install curb ramp \$1,300



**Code Reference** ADA 406.1, 405.2, CA 11B-406

**Progress**

<b>Record Number</b>	348540	<b>Resolution</b>	None
<b>Progress</b>	Not_Started	<b>Priority</b>	Seven
<b>Actual Date</b>		<b>Projected Date</b>	06/30/2032
<b>Actual Cost</b>	\$0.00	<b>Contractor</b>	
<b>Comments</b>	No Comments	<b>New Value</b>	0
<b>Assignment</b>	None		
<b>Designated Staff</b>			

**Harper Avenue - Rives Avenue To Cul-de-Sac**

**Curb Ramps - Exterior : Curb Ramp**

**Southwest Corner Of Smallwood Avenue - 2nd @ 33.950303193005, - 118.136200904846**

Curb Ramp : Parallel Curb Ramp Left Side Cross Slope

**Finding**

The cross slope is greater than allowed.

**On-Site Finding** 5.00 percent

**Recommendation**

Provide a compliant curb ramp.

Recommendation Up to 2.08 percent

**Costing Info (Estimated)**

Install curb ramp \$1,300



**Code Reference** ADA 406.1, 405.3, CA 11B-406.5.7

**Progress**

<b>Record Number</b>	348541	<b>Resolution</b>	None
<b>Progress</b>	Not_Started	<b>Priority</b>	Seven
<b>Actual Date</b>		<b>Projected Date</b>	06/30/2032
<b>Actual Cost</b>	\$0.00	<b>Contractor</b>	
<b>Comments</b>	No Comments		
<b>Assignment</b>	None	<b>New Value</b>	0
<b>Designated Staff</b>			

**Harper Avenue - Rives Avenue To Cul-de-Sac**

**Curb Ramps - Exterior : Curb Ramp**

**Southwest Corner Of Smallwood Avenue - 2nd @ 33.950303193005, - 118.136200904846**

Curb Ramp : Parallel Curb Ramp Right Side Slope

**Finding**

The running slope is greater than allowed.

**On-Site Finding** 9.20 percent

**Recommendation**

Provide a compliant curb ramp.

Recommendation Up to 8.33 percent

**Costing Info (Estimated)**

Install curb ramp \$1,300



**Code Reference** ADA 406.1, 405.2, CA 11B-406

**Progress**

<b>Record Number</b>	348542	<b>Resolution</b>	None
<b>Progress</b>	Not_Started	<b>Priority</b>	Seven
<b>Actual Date</b>		<b>Projected Date</b>	06/30/2032
<b>Actual Cost</b>	\$0.00	<b>Contractor</b>	
<b>Comments</b>	No Comments	<b>New Value</b>	0
<b>Assignment</b>	None		
<b>Designated Staff</b>			

Harper Avenue - Rives Avenue To Cul-de-Sac

Curb Ramps - Exterior : Curb Ramp , Landings and Transitions

**Southwest Corner Of Smallwood Avenue - 2nd @ 33.950303193005, - 118.136200904846**

Bottom Landing

Curb Ramp , Landings and Transitions : Bottom Landing Slope

**Finding**

The slope at the bottom landing is greater than allowed.

**On-Site Finding** 3.40 percent

**Recommendation**

Provide a compliant bottom landing that does not exceed the maximum slope requirements.

Recommendation Up to 2.08 percent

**Costing Info (Estimated)**

Provide compliant landing \$240



**Code Reference** ADA 402, 406.4, 406.2, 403.3, 406.1, CA 11B-406.5.3

**Progress**

<b>Record Number</b>	348543	<b>Resolution</b>	None
<b>Progress</b>	Not_Started	<b>Priority</b>	Seven
<b>Actual Date</b>		<b>Projected Date</b>	06/30/2032
<b>Actual Cost</b>	\$0.00	<b>Contractor</b>	
<b>Comments</b>	No Comments	<b>New Value</b>	0
<b>Assignment</b>	None		
<b>Designated Staff</b>			



## Harper Avenue - Rives Avenue To Cul-de-Sac

### Sidewalks - Exterior : Sidewalks , Hazards & Gratings

---

#### North Side

#### Bush East Of Smallwood Avenue @ 33.949478844237, -118.134300559759

Sidewalks , Hazards & Gratings : Sidewalk Width at Obstruction

#### Finding

Sidewalk width at the obstruction is not compliant.

**On-Site Finding** 28.00 inches

#### Recommendation

Sidewalk width at the obstruction shall have the recommended value.

Recommendation At least 48.00 inches

#### Costing Info (Estimated)

\$1,260



**Code Reference** ADA 206, 302, 403.5.1, CA 11B-403.5

#### Progress

---

<b>Record Number</b>	348532	<b>Resolution</b>	None
<b>Progress</b>	Not_Started	<b>Priority</b>	Seven
<b>Actual Date</b>		<b>Projected Date</b>	06/30/2032
<b>Actual Cost</b>	\$0.00	<b>Contractor</b>	
<b>Comments</b>	No Comments	<b>New Value</b>	0
<b>Assignment</b>	None		
<b>Designated Staff</b>			

## Harper Avenue - Rives Avenue To Cul-de-Sac

### Sidewalks - Exterior : Sidewalks , Hazards & Gratings

---

#### North Side

#### Curb East Of Rives Avenue @ 33.950343242135, -118.135948777199

Sidewalks , Hazards & Gratings : Curb is on Path of Travel

#### Finding

There is a curb on the designated path of travel.

**On-Site Finding** Not Compliant

#### Recommendation

Provide a compliant curb ramp.

Recommendation See Recommendation

#### Costing Info (Estimated)

Install curb ramp \$2,500



**Code Reference** ADA 402, 303, 406, 403.4, 303.4

#### Progress

---

<b>Record Number</b>	348535	<b>Resolution</b>	None
<b>Progress</b>	Not_Started	<b>Priority</b>	Seven
<b>Actual Date</b>		<b>Projected Date</b>	06/30/2032
<b>Actual Cost</b>	\$0.00	<b>Contractor</b>	
<b>Comments</b>	No Comments	<b>New Value</b>	0
<b>Assignment</b>	None		
<b>Designated Staff</b>			

## Harper Avenue - Rives Avenue To Cul-de-Sac

### Sidewalks - Exterior : Sidewalks , Hazards & Gratings

---

#### North Side

#### Curb East Of Rives Avenue @ 33.950431127659, -118.136120438576

Sidewalks , Hazards & Gratings : Curb is on Path of Travel

#### Finding

There is a curb on the designated path of travel.

**On-Site Finding** Not Compliant

#### Recommendation

Provide a compliant curb ramp.

Recommendation See Recommendation

#### Costing Info (Estimated)

Install curb ramp \$2,500



**Code Reference** ADA 402, 303, 406, 403.4, 303.4

#### Progress

---

<b>Record Number</b>	348530	<b>Resolution</b>	None
<b>Progress</b>	Not_Started	<b>Priority</b>	Seven
<b>Actual Date</b>		<b>Projected Date</b>	06/30/2032
<b>Actual Cost</b>	\$0.00	<b>Contractor</b>	
<b>Comments</b>	No Comments	<b>New Value</b>	0
<b>Assignment</b>	None		
<b>Designated Staff</b>			

## Harper Avenue - Rives Avenue To Cul-de-Sac

### Sidewalks - Exterior : Sidewalks , Surface

---

#### North Side

#### Sidewalk East Of Rives Avenue @ 33.950893915754, -118.137044459581

Sidewalks , Surface : Cross Slope

#### Finding

Sidewalk cross slope is not compliant.

**On-Site Finding** 3.10 percent for 170.00 feet

#### Recommendation

Repave the sidewalk surface with the recommended cross slope.

Recommendation Up to 2.08 percent

#### Costing Info (Estimated)

Repave surface \$1,092



**Code Reference** ADA 206, 302, CA 11B-403.3

#### Progress

---

<b>Record Number</b>	348515	<b>Resolution</b>	None
<b>Progress</b>	Not_Started	<b>Priority</b>	Seven
<b>Actual Date</b>		<b>Projected Date</b>	06/30/2032
<b>Actual Cost</b>	\$0.00	<b>Contractor</b>	
<b>Comments</b>	No Comments		
<b>Assignment</b>	None	<b>New Value</b>	0
<b>Designated Staff</b>			

**Harper Avenue - Rives Avenue To Cul-de-Sac**

**Sidewalks - Exterior : Sidewalks , Surface**

---

**North Side**

**Sidewalk East Of Rives Avenue @ 33.951091934892, -118.137430697680**

Sidewalks , Surface : Cross Slope

**Finding**

Sidewalk cross slope is not compliant.

**On-Site Finding** 3.50 percent for 65.00 feet

**Recommendation**

Repave the sidewalk surface with the recommended cross slope.

Recommendation Up to 2.08 percent

**Costing Info (Estimated)**

Repave surface \$1,092



**Code Reference** ADA 206, 302, CA 11B-403.3

**Progress**

---

<b>Record Number</b>	348516	<b>Resolution</b>	None
<b>Progress</b>	Not_Started	<b>Priority</b>	Seven
<b>Actual Date</b>		<b>Projected Date</b>	06/30/2032
<b>Actual Cost</b>	\$0.00	<b>Contractor</b>	
<b>Comments</b>	No Comments	<b>New Value</b>	0
<b>Assignment</b>	None		
<b>Designated Staff</b>			



## Harper Avenue - Rives Avenue To Cul-de-Sac

### Sidewalks - Exterior : Sidewalks , Surface

---

#### North Side

#### Sidewalk East Of Smallwood Avenue @ 33.949364258013, -118.134068548679

Sidewalks , Surface : Cross Slope

#### Finding

Sidewalk cross slope is not compliant.

**On-Site Finding** 4.00 percent for 155.00 feet

#### Recommendation

Repave the sidewalk surface with the recommended cross slope.

Recommendation Up to 2.08 percent

#### Costing Info (Estimated)

Repave surface \$1,092



**Code Reference** ADA 206, 302, CA 11B-403.3

#### Progress

---

<b>Record Number</b>	348519	<b>Resolution</b>	None
<b>Progress</b>	Not_Started	<b>Priority</b>	Seven
<b>Actual Date</b>		<b>Projected Date</b>	06/30/2032
<b>Actual Cost</b>	\$0.00	<b>Contractor</b>	
<b>Comments</b>	No Comments		
<b>Assignment</b>	None	<b>New Value</b>	0
<b>Designated Staff</b>			

Harper Avenue - Rives Avenue To Cul-de-Sac

Sidewalks - Exterior : Sidewalks

North Side

Sidewalk East Of Smallwood Avenue @ 33.949580080480, -118.134484291077

Sidewalks : Opening

Finding

Ground surface has an opening that is not compliant.

On-Site Finding Not Compliant

Recommendation

Make sure that the surface opening does not allow passage of a sphere more than 1/2 inch in diameter.

Recommendation See Recommendation

Costing Info (Estimated)

Unassigned



Code Reference ADA 302

Progress

<b>Record Number</b>	348518	<b>Resolution</b>	None
<b>Progress</b>	Not_Started	<b>Priority</b>	Seven
<b>Actual Date</b>		<b>Projected Date</b>	06/30/2032
<b>Actual Cost</b>	\$0.00	<b>Contractor</b>	
<b>Comments</b>	No Comments		
<b>Assignment</b>	None	<b>New Value</b>	0
<b>Designated Staff</b>			

## Harper Avenue - Rives Avenue To Cul-de-Sac

### Sidewalks - Exterior : Sidewalks , Surface

---

#### North Side

#### Sidewalk East Of Smallwood Avenue @ 33.950035085847, -118.135393559933

Sidewalks , Surface : Cross Slope

#### Finding

Sidewalk cross slope is not compliant.

**On-Site Finding** 3.20 percent for 100.00 feet

#### Recommendation

Repave the sidewalk surface with the recommended cross slope.

Recommendation Up to 2.08 percent

#### Costing Info (Estimated)

Repave surface \$1,092



**Code Reference** ADA 206, 302,CA 11B-403.3

#### Progress

---

<b>Record Number</b>	348517	<b>Resolution</b>	None
<b>Progress</b>	Not_Started	<b>Priority</b>	Seven
<b>Actual Date</b>		<b>Projected Date</b>	06/30/2032
<b>Actual Cost</b>	\$0.00	<b>Contractor</b>	
<b>Comments</b>	No Comments		
<b>Assignment</b>	None	<b>New Value</b>	0
<b>Designated Staff</b>			

## Harper Avenue - Rives Avenue To Cul-de-Sac

### Sidewalks - Exterior : Sidewalks , Surface

---

#### North Side

#### Sidewalk East Of Smallwood Avenue @ 33.950223094690, -118.135730177164

Sidewalks , Surface : Cross Slope

#### Finding

Sidewalk cross slope is not compliant.

**On-Site Finding** 3.00 percent for 115.00 feet

#### Recommendation

Repave the sidewalk surface with the recommended cross slope.

Recommendation Up to 2.08 percent

#### Costing Info (Estimated)

Repave surface \$1,092



**Code Reference** ADA 206, 302, CA 11B-403.3

#### Progress

---

<b>Record Number</b>	348522	<b>Resolution</b>	None
<b>Progress</b>	Not_Started	<b>Priority</b>	Seven
<b>Actual Date</b>		<b>Projected Date</b>	06/30/2032
<b>Actual Cost</b>	\$0.00	<b>Contractor</b>	
<b>Comments</b>	No Comments		
<b>Assignment</b>	None	<b>New Value</b>	0
<b>Designated Staff</b>			

**Harper Avenue - Rives Avenue To Cul-de-Sac**

**Sidewalks - Exterior : Sidewalks , Surface**

---

**North Side**

**Sidewalk East Of Smallwood Avenue @ 33.950259806427, -118.135799914598**

Sidewalks , Surface : Cross Slope

**Finding**

Sidewalk cross slope is not compliant.

**On-Site Finding** 3.00 percent for 170.00 feet

**Recommendation**

Repave the sidewalk surface with the recommended cross slope.

Recommendation Up to 2.08 percent

**Costing Info (Estimated)**

Repave surface \$1,092



**Code Reference** ADA 206, 302,CA 11B-403.3

**Progress**

---

<b>Record Number</b>	348520	<b>Resolution</b>	None
<b>Progress</b>	Not_Started	<b>Priority</b>	Seven
<b>Actual Date</b>		<b>Projected Date</b>	06/30/2032
<b>Actual Cost</b>	\$0.00	<b>Contractor</b>	
<b>Comments</b>	No Comments		
<b>Assignment</b>	None	<b>New Value</b>	0
<b>Designated Staff</b>			



**Harper Avenue - Rives Avenue To Cul-de-Sac**

**Sidewalks - Exterior : Sidewalks , Surface**

---

**North Side**

**Sidewalk East Of Smallwood Avenue @ 33.950259806427, -118.135799914598**

Sidewalks , Surface : Running Slope

**Finding**

Sidewalk running slope is not compliant.

**On-Site Finding** 7.20 percent for 8.00 feet

**Recommendation**

Repave the sidewalk surface with the recommended running slope.

Recommendation Up to 5.00 percent

**Costing Info (Estimated)**

Repave surface \$1,184



**Code Reference** ADA 206, 302

**Progress**

---

<b>Record Number</b>	348521	<b>Resolution</b>	None
<b>Progress</b>	Not_Started	<b>Priority</b>	Seven
<b>Actual Date</b>		<b>Projected Date</b>	06/30/2032
<b>Actual Cost</b>	\$0.00	<b>Contractor</b>	
<b>Comments</b>	No Comments	<b>New Value</b>	0
<b>Assignment</b>	None		
<b>Designated Staff</b>			

**Harper Avenue - Rives Avenue To Cul-de-Sac**

**Sidewalks - Exterior : Sidewalks , Change in Level**

---

**North Side**

**Tree East Of Smallwood Avenue @ 33.949509993863, -118.134351521730**

Sidewalks , Change in Level : Change in Level Non Beveled

**Finding**

There is a change in elevation greater than recommended value.

**On-Site Finding** 73.00 inches

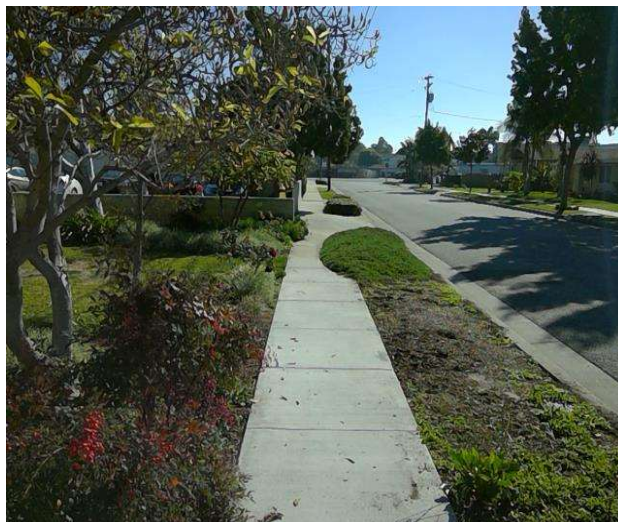
**Recommendation**

Ensure that the change in elevation is within the recommended value.

Recommendation Up to 0.25 inches

**Costing Info (Estimated)**

Remove tripping hazards \$198



**Code Reference** ADA 206, 302

**Progress**

---

<b>Record Number</b>	348524	<b>Resolution</b>	None
<b>Progress</b>	Not_Started	<b>Priority</b>	Seven
<b>Actual Date</b>		<b>Projected Date</b>	06/30/2032
<b>Actual Cost</b>	\$0.00	<b>Contractor</b>	
<b>Comments</b>	No Comments	<b>New Value</b>	0
<b>Assignment</b>	None		
<b>Designated Staff</b>			

**Harper Avenue - Rives Avenue To Cul-de-Sac**

**Sidewalks - Exterior : Sidewalks , Hazards & Gratings**

---

**North Side**

**Tree East Of Smallwood Avenue @ 33.949533356075, -118.134409189224**

Sidewalks , Hazards & Gratings : Overhead Obstruction Height

**Finding**

Overhead obstruction height is not compliant.

**On-Site Finding** 71.00 inches

**Recommendation**

Provide a compliant vertical clearance height.

Recommendation At least 80.00 inches

**Costing Info (Estimated)**

Unassigned



**Code Reference** ADA 206, 307.4,CA 11B-307.4

**Progress**

---

<b>Record Number</b>	348534	<b>Resolution</b>	None
<b>Progress</b>	Not_Started	<b>Priority</b>	Seven
<b>Actual Date</b>		<b>Projected Date</b>	06/30/2032
<b>Actual Cost</b>	\$0.00	<b>Contractor</b>	
<b>Comments</b>	No Comments		
<b>Assignment</b>	None	<b>New Value</b>	0
<b>Designated Staff</b>			

**Harper Avenue - Rives Avenue To Cul-de-Sac**

**Sidewalks - Exterior : Sidewalks , Hazards & Gratings**

---

**North Side**

**Tree East Of Smallwood Avenue @ 33.949607892614, -118.134551346302**

Sidewalks , Hazards & Gratings : Overhead Obstruction Height

**Finding**

Overhead obstruction height is not compliant.

**On-Site Finding** 70.00 inches

**Recommendation**

Provide a compliant vertical clearance height.

Recommendation At least 80.00 inches

**Costing Info (Estimated)**

Unassigned



**Code Reference** ADA 206, 307.4,CA 11B-307.4

**Progress**

---

<b>Record Number</b>	348526	<b>Resolution</b>	None
<b>Progress</b>	Not_Started	<b>Priority</b>	Seven
<b>Actual Date</b>		<b>Projected Date</b>	06/30/2032
<b>Actual Cost</b>	\$0.00	<b>Contractor</b>	
<b>Comments</b>	No Comments		
<b>Assignment</b>	None	<b>New Value</b>	0
<b>Designated Staff</b>			

## Harper Avenue - Rives Avenue To Cul-de-Sac

### Sidewalks - Exterior : Sidewalks , Hazards & Gratings

---

#### North Side

**Tree East Of Smallwood Avenue @ 33.949966112085, -118.135252743959**

Sidewalks , Hazards & Gratings : Overhead Obstruction Height

#### Finding

Overhead obstruction height is not compliant.

**On-Site Finding** 36.00 inches

#### Recommendation

Provide a compliant vertical clearance height.

Recommendation At least 80.00 inches

#### Costing Info (Estimated)

Unassigned



**Code Reference** ADA 206, 307.4,CA 11B-307.4

#### Progress

---

<b>Record Number</b>	348533	<b>Resolution</b>	None
<b>Progress</b>	Not_Started	<b>Priority</b>	Seven
<b>Actual Date</b>		<b>Projected Date</b>	06/30/2032
<b>Actual Cost</b>	\$0.00	<b>Contractor</b>	
<b>Comments</b>	No Comments		
<b>Assignment</b>	None	<b>New Value</b>	0
<b>Designated Staff</b>			



**Harper Avenue - Rives Avenue To Cul-de-Sac**

**Sidewalks - Exterior : Sidewalks , Hazards & Gratings**

---

**North Side**

**Tree East Of Smallwood Avenue @ 33.950058447916, -118.135437816381**

Sidewalks , Hazards & Gratings : Overhead Obstruction Height

**Finding**

Overhead obstruction height is not compliant.

**On-Site Finding** 30.00 inches

**Recommendation**

Provide a compliant vertical clearance height.

Recommendation At least 80.00 inches

**Costing Info (Estimated)**

Unassigned



**Code Reference** ADA 206, 307.4,CA 11B-307.4

**Progress**

---

<b>Record Number</b>	348523	<b>Resolution</b>	None
<b>Progress</b>	Not_Started	<b>Priority</b>	Seven
<b>Actual Date</b>		<b>Projected Date</b>	06/30/2032
<b>Actual Cost</b>	\$0.00	<b>Contractor</b>	
<b>Comments</b>	No Comments		
<b>Assignment</b>	None	<b>New Value</b>	0
<b>Designated Staff</b>			

## Harper Avenue - Rives Avenue To Cul-de-Sac

### Sidewalks - Exterior : Sidewalks

#### North Side @ 33.951120858997, -118.137462884188

Sidewalks : 60X60 Turn Area

#### Finding

There is no 60X60 turn area at every 200 feet.

**On-Site Finding** Not Found

#### Recommendation

Provide a 60X60 turn every 200 feet on the sidewalk.

Recommendation See Recommendation

#### Costing Info (Estimated)

\$2,400



**Code Reference** ADA 206, 302

### Progress

<b>Record Number</b>	350334	<b>Resolution</b>	None
<b>Progress</b>	Not_Started	<b>Priority</b>	Seven
<b>Actual Date</b>		<b>Projected Date</b>	06/30/2032
<b>Actual Cost</b>	\$0.00	<b>Contractor</b>	
<b>Comments</b>	No Comments		
<b>Assignment</b>	None	<b>New Value</b>	0
<b>Designated Staff</b>			

**Harper Avenue - Rives Avenue To Cul-de-Sac**

**Sidewalks - Exterior : Sidewalks , Vehicular Traffic**

---

**South Side**

**Driveway West Of Paramount Boulevard @ 33.949080573010, -118.133813738823**

Sidewalks , Vehicular Traffic : Cross Walks and Detectable Warnings

**Finding**

There are no detectable warnings where the pedestrian route crosses vehicular traffic.

**On-Site Finding** Not Found

**Recommendation**

Provide detectable warnings.

Recommendation See Recommendation

**Costing Info (Estimated)**

Install compliant detectable warnings \$190



**Code Reference** ADA 705,CA 11B-705.1.2.5,CA 11B-247.1.2.5

**Progress**

---

<b>Record Number</b>	348511	<b>Resolution</b>	None
<b>Progress</b>	Not_Started	<b>Priority</b>	Seven
<b>Actual Date</b>		<b>Projected Date</b>	06/30/2032
<b>Actual Cost</b>	\$0.00	<b>Contractor</b>	
<b>Comments</b>	No Comments	<b>New Value</b>	0
<b>Assignment</b>	None		
<b>Designated Staff</b>			

## Harper Avenue - Rives Avenue To Cul-de-Sac

### Sidewalks - Exterior : Sidewalks

---

#### South Side

#### Driveway West Of Paramount Boulevard @ 33.949080573010, -118.133813738823

Sidewalks : Vehicular Traffic Cross Slope

#### Finding

Cross slope at vehicular traffic is not compliant.

**On-Site Finding** 9.00 percent

#### Recommendation

Repave the surface to provide a compliant cross slope.

Recommendation Up to 2.08 percent

#### Costing Info (Estimated)

Repave surface \$1,092



**Code Reference** ADA 206, 302, CA 11B-403.3

#### Progress

---

<b>Record Number</b>	348512	<b>Resolution</b>	None
<b>Progress</b>	Not_Started	<b>Priority</b>	Seven
<b>Actual Date</b>		<b>Projected Date</b>	06/30/2032
<b>Actual Cost</b>	\$0.00	<b>Contractor</b>	
<b>Comments</b>	No Comments	<b>New Value</b>	0
<b>Assignment</b>	None		
<b>Designated Staff</b>			

**Harper Avenue - Rives Avenue To Cul-de-Sac**

**Sidewalks - Exterior : Sidewalks , Surface**

---

**South Side**

**Sidewalk West Of Paramount Boulevard @ 33.948978223679, -118.133624643087**

Sidewalks , Surface : Cross Slope

**Finding**

Sidewalk cross slope is not compliant.

**On-Site Finding** 3.00 percent for 36.00 feet

**Recommendation**

Repave the sidewalk surface with the recommended cross slope.

Recommendation Up to 2.08 percent

**Costing Info (Estimated)**

Repave surface \$1,092



**Code Reference** ADA 206, 302,CA 11B-403.3

**Progress**

---

<b>Record Number</b>	348494	<b>Resolution</b>	None
<b>Progress</b>	Not_Started	<b>Priority</b>	Seven
<b>Actual Date</b>		<b>Projected Date</b>	06/30/2032
<b>Actual Cost</b>	\$0.00	<b>Contractor</b>	
<b>Comments</b>	No Comments	<b>New Value</b>	0
<b>Assignment</b>	None		
<b>Designated Staff</b>			



## Harper Avenue - Rives Avenue To Cul-de-Sac

### Sidewalks - Exterior : Sidewalks , Surface

---

#### South Side

#### Sidewalk West Of Paramount Boulevard @ 33.949269696450, -118.134175837040

Sidewalks , Surface : Cross Slope

#### Finding

Sidewalk cross slope is not compliant.

**On-Site Finding** 2.80 percent for 45.00 feet

#### Recommendation

Repave the sidewalk surface with the recommended cross slope.

Recommendation Up to 2.08 percent

#### Costing Info (Estimated)

Repave surface \$1,092



**Code Reference** ADA 206, 302,CA 11B-403.3

#### Progress

---

<b>Record Number</b>	348500	<b>Resolution</b>	None
<b>Progress</b>	Not_Started	<b>Priority</b>	Seven
<b>Actual Date</b>		<b>Projected Date</b>	06/30/2032
<b>Actual Cost</b>	\$0.00	<b>Contractor</b>	
<b>Comments</b>	No Comments	<b>New Value</b>	0
<b>Assignment</b>	None		
<b>Designated Staff</b>			

## Harper Avenue - Rives Avenue To Cul-de-Sac

### Sidewalks - Exterior : Sidewalks , Surface

---

#### South Side

#### Sidewalk West Of Paramount Boulevard @ 33.949373157920, -118.134367614985

Sidewalks , Surface : Cross Slope

#### Finding

Sidewalk cross slope is not compliant.

**On-Site Finding** 3.20 percent for 40.00 feet

#### Recommendation

Repave the sidewalk surface with the recommended cross slope.

Recommendation Up to 2.08 percent

#### Costing Info (Estimated)

Repave surface \$1,092



**Code Reference** ADA 206, 302, CA 11B-403.3

#### Progress

---

<b>Record Number</b>	348496	<b>Resolution</b>	None
<b>Progress</b>	Not_Started	<b>Priority</b>	Seven
<b>Actual Date</b>		<b>Projected Date</b>	06/30/2032
<b>Actual Cost</b>	\$0.00	<b>Contractor</b>	
<b>Comments</b>	No Comments	<b>New Value</b>	0
<b>Assignment</b>	None		
<b>Designated Staff</b>			

## Harper Avenue - Rives Avenue To Cul-de-Sac

### Sidewalks - Exterior : Sidewalks , Surface

---

#### South Side

#### Sidewalk West Of Paramount Boulevard @ 33.949449919573, -118.134528547525

Sidewalks , Surface : Cross Slope

#### Finding

Sidewalk cross slope is not compliant.

**On-Site Finding** 2.80 percent for 120.00 feet

#### Recommendation

Repave the sidewalk surface with the recommended cross slope.

Recommendation Up to 2.08 percent

#### Costing Info (Estimated)

Repave surface \$1,092



**Code Reference** ADA 206, 302, CA 11B-403.3

#### Progress

---

<b>Record Number</b>	348502	<b>Resolution</b>	None
<b>Progress</b>	Not_Started	<b>Priority</b>	Seven
<b>Actual Date</b>		<b>Projected Date</b>	06/30/2032
<b>Actual Cost</b>	\$0.00	<b>Contractor</b>	
<b>Comments</b>	No Comments	<b>New Value</b>	0
<b>Assignment</b>	None		
<b>Designated Staff</b>			

## Harper Avenue - Rives Avenue To Cul-de-Sac

### Sidewalks - Exterior : Sidewalks , Surface

---

#### South Side

#### Sidewalk West Of Paramount Boulevard @ 33.949698003865, -118.135016709566

Sidewalks , Surface : Cross Slope

#### Finding

Sidewalk cross slope is not compliant.

**On-Site Finding** 4.10 percent for 70.00 feet

#### Recommendation

Repave the sidewalk surface with the recommended cross slope.

Recommendation Up to 2.08 percent

#### Costing Info (Estimated)

Repave surface \$1,092



**Code Reference** ADA 206, 302, CA 11B-403.3

#### Progress

---

<b>Record Number</b>	348499	<b>Resolution</b>	None
<b>Progress</b>	Not_Started	<b>Priority</b>	Seven
<b>Actual Date</b>		<b>Projected Date</b>	06/30/2032
<b>Actual Cost</b>	\$0.00	<b>Contractor</b>	
<b>Comments</b>	No Comments		
<b>Assignment</b>	None	<b>New Value</b>	0
<b>Designated Staff</b>			

## Harper Avenue - Rives Avenue To Cul-de-Sac

### Sidewalks - Exterior : Sidewalks , Surface

---

#### South Side

#### Sidewalk West Of Paramount Boulevard @ 33.949823714464, -118.135263472795

Sidewalks , Surface : Cross Slope

#### Finding

Sidewalk cross slope is not compliant.

**On-Site Finding** 4.00 percent for 60.00 feet

#### Recommendation

Repave the sidewalk surface with the recommended cross slope.

Recommendation Up to 2.08 percent

#### Costing Info (Estimated)

Repave surface \$1,092



**Code Reference** ADA 206, 302, CA 11B-403.3

#### Progress

---

<b>Record Number</b>	348495	<b>Resolution</b>	None
<b>Progress</b>	Not_Started	<b>Priority</b>	Seven
<b>Actual Date</b>		<b>Projected Date</b>	06/30/2032
<b>Actual Cost</b>	\$0.00	<b>Contractor</b>	
<b>Comments</b>	No Comments		
<b>Assignment</b>	None	<b>New Value</b>	0
<b>Designated Staff</b>			



**Harper Avenue - Rives Avenue To Cul-de-Sac**

**Sidewalks - Exterior : Sidewalks , Surface**

---

**South Side**

**Sidewalk West Of Paramount Boulevard @ 33.950037310807, -118.135680556297**

Sidewalks , Surface : Cross Slope

**Finding**

Sidewalk cross slope is not compliant.

**On-Site Finding** 3.60 percent for 118.00 feet

**Recommendation**

Repave the sidewalk surface with the recommended cross slope.

Recommendation Up to 2.08 percent

**Costing Info (Estimated)**

Repave surface \$1,092



**Code Reference** ADA 206, 302, CA 11B-403.3

**Progress**

---

<b>Record Number</b>	348498	<b>Resolution</b>	None
<b>Progress</b>	Not_Started	<b>Priority</b>	Seven
<b>Actual Date</b>		<b>Projected Date</b>	06/30/2032
<b>Actual Cost</b>	\$0.00	<b>Contractor</b>	
<b>Comments</b>	No Comments	<b>New Value</b>	0
<b>Assignment</b>	None		
<b>Designated Staff</b>			

**Harper Avenue - Rives Avenue To Cul-de-Sac**

**Sidewalks - Exterior : Sidewalks , Surface**

---

**South Side**

**Sidewalk West Of Smallwood Avenue @ 33.950471176728, -118.136565685272**

Sidewalks , Surface : Cross Slope

**Finding**

Sidewalk cross slope is not compliant.

**On-Site Finding** 3.50 percent for 115.00 feet

**Recommendation**

Repave the sidewalk surface with the recommended cross slope.

Recommendation Up to 2.08 percent

**Costing Info (Estimated)**

Repave surface \$1,092



**Code Reference** ADA 206, 302, CA 11B-403.3

**Progress**

---

<b>Record Number</b>	348501	<b>Resolution</b>	None
<b>Progress</b>	Not_Started	<b>Priority</b>	Seven
<b>Actual Date</b>		<b>Projected Date</b>	06/30/2032
<b>Actual Cost</b>	\$0.00	<b>Contractor</b>	
<b>Comments</b>	No Comments		
<b>Assignment</b>	None	<b>New Value</b>	0
<b>Designated Staff</b>			

## Harper Avenue - Rives Avenue To Cul-de-Sac

### Sidewalks - Exterior : Sidewalks , Surface

---

#### South Side

#### Sidewalk West Of Smallwood Avenue @ 33.950970676037, -118.137566149235

Sidewalks , Surface : Cross Slope

#### Finding

Sidewalk cross slope is not compliant.

**On-Site Finding** 3.50 percent for 93.00 feet

#### Recommendation

Repave the sidewalk surface with the recommended cross slope.

Recommendation Up to 2.08 percent

#### Costing Info (Estimated)

Repave surface \$1,092



**Code Reference** ADA 206, 302, CA 11B-403.3

#### Progress

---

<b>Record Number</b>	348497	<b>Resolution</b>	None
<b>Progress</b>	Not_Started	<b>Priority</b>	Seven
<b>Actual Date</b>		<b>Projected Date</b>	06/30/2032
<b>Actual Cost</b>	\$0.00	<b>Contractor</b>	
<b>Comments</b>	No Comments		
<b>Assignment</b>	None	<b>New Value</b>	0
<b>Designated Staff</b>			

**Harper Avenue - Rives Avenue To Cul-de-Sac**

**Sidewalks - Exterior : Sidewalks , Hazards & Gratings**

---

**South Side**

**Tree West Of Paramount Boulevard @ 33.949653504494, -118.134924173355**

Sidewalks , Hazards & Gratings : Overhead Obstruction Height

**Finding**

Overhead obstruction height is not compliant.

**On-Site Finding** 68.00 inches

**Recommendation**

Provide a compliant vertical clearance height.

Recommendation At least 80.00 inches

**Costing Info (Estimated)**

Unassigned



**Code Reference** ADA 206, 307.4,CA 11B-307.4

**Progress**

---

<b>Record Number</b>	348507	<b>Resolution</b>	None
<b>Progress</b>	Not_Started	<b>Priority</b>	Seven
<b>Actual Date</b>		<b>Projected Date</b>	06/30/2032
<b>Actual Cost</b>	\$0.00	<b>Contractor</b>	
<b>Comments</b>	No Comments	<b>New Value</b>	0
<b>Assignment</b>	None		
<b>Designated Staff</b>			



Harper Avenue - Rives Avenue To Cul-de-Sac



Harper Avenue - Rives Avenue To Cul-de-Sac

Rives Avenue To Cul-de-Sac  
Downey, CA 90241

Date of Inspection  
2/1/2017

\*Estimated Facility Total: \$62,203

\*Estimated facility total is for estimating purposes only and does not represent total construction, repair totals or design fees.

Prepared By

**Disability Access Consultants**

(800) 743-7067

Prepared Using

