

# Accessibility Survey

---



## City of Downey Botany Street - Tweedy Lane to Guatemala Avenue

Tweedy Lane to Guatemala Avenue  
Downey, CA 90240

Date of Inspection  
1/30/2017

Prepared By

**Disability Access Consultants**

(800) 743-7067

## Botany Street - Tweedy Lane to Guatemala Avenue

### Sidewalks - Exterior : Sidewalks , Change in Level

---

#### South Side

#### Change In Level East Of Guatemala Avenue @ 33.967579304993, - 118.123487234116

Sidewalks , Change in Level : Change in Level Non Beveled

#### Finding

There is a change in elevation greater than recommended value.

**On-Site Finding** 1.50 inches

#### Recommendation

Ensure that the change in elevation is within the recommended value.

Recommendation Up to 0.25 inches

#### Costing Info (Estimated)

Remove tripping hazards \$198



**Code Reference** ADA 206, 302

#### Progress

---

<b>Record Number</b>	346691	<b>Resolution</b>	None
<b>Progress</b>	Not_Started	<b>Priority</b>	One
<b>Actual Date</b>		<b>Projected Date</b>	06/30/2018
<b>Actual Cost</b>	\$0.00	<b>Contractor</b>	
<b>Comments</b>	No Comments		
<b>Assignment</b>	None	<b>New Value</b>	0
<b>Designated Staff</b>			

## Botany Street - Tweedy Lane to Guatemala Avenue

### Sidewalks - Exterior : Sidewalks , Change in Level

---

#### South Side

**Change In Level East Of Guatemala Avenue @ 33.967581529493, - 118.123500645161**

Sidewalks , Change in Level : Change in Level Non Beveled

#### Finding

There is a change in elevation greater than recommended value.

**On-Site Finding** 1.50 inches

#### Recommendation

Ensure that the change in elevation is within the recommended value.

Recommendation Up to 0.25 inches

#### Costing Info (Estimated)

Remove tripping hazards \$198



**Code Reference** ADA 206, 302

#### Progress

---

<b>Record Number</b>	346678	<b>Resolution</b>	None
<b>Progress</b>	Not_Started	<b>Priority</b>	One
<b>Actual Date</b>		<b>Projected Date</b>	06/30/2018
<b>Actual Cost</b>	\$0.00	<b>Contractor</b>	
<b>Comments</b>	No Comments	<b>New Value</b>	0
<b>Assignment</b>	None		
<b>Designated Staff</b>			

## Botany Street - Tweedy Lane to Guatemala Avenue

### Sidewalks - Exterior : Sidewalks , Change in Level

---

#### North Side

#### Alderdale Street North Crossing @ 33.967607111243, -118.123235106468

Sidewalks , Change in Level : Change in Level Non Beveled

#### Finding

There is a change in elevation greater than recommended value.

**On-Site Finding** 0.75 inches

#### Recommendation

Ensure that the change in elevation is within the recommended value.

Recommendation Up to 0.25 inches

#### Costing Info (Estimated)

Remove tripping hazards \$198



**Code Reference** ADA 206, 302

#### Progress

---

<b>Record Number</b>	346722	<b>Resolution</b>	None
<b>Progress</b>	Not_Started	<b>Priority</b>	Two
<b>Actual Date</b>		<b>Projected Date</b>	06/30/2021
<b>Actual Cost</b>	\$0.00	<b>Contractor</b>	
<b>Comments</b>	No Comments	<b>New Value</b>	0
<b>Assignment</b>	None		
<b>Designated Staff</b>			

## Botany Street - Tweedy Lane to Guatemala Avenue

### Sidewalks - Exterior : Sidewalks , Change in Level

---

#### North Side

#### Change In Level West Of Alderdale Street @ 33.967841795634, -118.123664259911

Sidewalks , Change in Level : Change in Level Non Beveled

#### Finding

There is a change in elevation greater than recommended value.

**On-Site Finding** 0.75 inches

#### Recommendation

Ensure that the change in elevation is within the recommended value.

Recommendation Up to 0.25 inches

#### Costing Info (Estimated)

Remove tripping hazards \$198



**Code Reference** ADA 206, 302

#### Progress

---

<b>Record Number</b>	346699	<b>Resolution</b>	None
<b>Progress</b>	Not_Started	<b>Priority</b>	Two
<b>Actual Date</b>		<b>Projected Date</b>	06/30/2021
<b>Actual Cost</b>	\$0.00	<b>Contractor</b>	
<b>Comments</b>	No Comments		
<b>Assignment</b>	None	<b>New Value</b>	0
<b>Designated Staff</b>			

## Botany Street - Tweedy Lane to Guatemala Avenue

### Sidewalks - Exterior : Sidewalks , Change in Level

---

#### North Side

#### Change In Level West Of Alderdale Street @ 33.967861816073, -118.123707175255

Sidewalks , Change in Level : Change in Level Non Beveled

#### Finding

There is a change in elevation greater than recommended value.

**On-Site Finding** 0.50 inches

#### Recommendation

Ensure that the change in elevation is within the recommended value.

Recommendation Up to 0.25 inches

#### Costing Info (Estimated)

Remove tripping hazards \$198



**Code Reference** ADA 206, 302

#### Progress

---

<b>Record Number</b>	346700	<b>Resolution</b>	None
<b>Progress</b>	Not_Started	<b>Priority</b>	Two
<b>Actual Date</b>		<b>Projected Date</b>	06/30/2021
<b>Actual Cost</b>	\$0.00	<b>Contractor</b>	
<b>Comments</b>	No Comments	<b>New Value</b>	0
<b>Assignment</b>	None		
<b>Designated Staff</b>			

## Botany Street - Tweedy Lane to Guatemala Avenue

### Sidewalks - Exterior : Sidewalks , Change in Level

---

#### North Side

#### Change In Level West Of Alderdale Street @ 33.968006407996, -118.123991489410

Sidewalks , Change in Level : Change in Level Non Beveled

#### Finding

There is a change in elevation greater than recommended value.

**On-Site Finding** 0.50 inches

#### Recommendation

Ensure that the change in elevation is within the recommended value.

Recommendation Up to 0.25 inches

#### Costing Info (Estimated)

Remove tripping hazards \$198



**Code Reference** ADA 206, 302

#### Progress

---

<b>Record Number</b>	346706	<b>Resolution</b>	None
<b>Progress</b>	Not_Started	<b>Priority</b>	Two
<b>Actual Date</b>		<b>Projected Date</b>	06/30/2021
<b>Actual Cost</b>	\$0.00	<b>Contractor</b>	
<b>Comments</b>	No Comments	<b>New Value</b>	0
<b>Assignment</b>	None		
<b>Designated Staff</b>			

## Botany Street - Tweedy Lane to Guatemala Avenue

### Sidewalks - Exterior : Sidewalks , Change in Level

---

#### North Side

#### Change In Level West Of Alderdale Street @ 33.968055346745, -118.124090731144

Sidewalks , Change in Level : Change in Level Non Beveled

#### Finding

There is a change in elevation greater than recommended value.

**On-Site Finding** 0.50 inches

#### Recommendation

Ensure that the change in elevation is within the recommended value.

Recommendation Up to 0.25 inches

#### Costing Info (Estimated)

Remove tripping hazards \$198



**Code Reference** ADA 206, 302

#### Progress

---

<b>Record Number</b>	346703	<b>Resolution</b>	None
<b>Progress</b>	Not_Started	<b>Priority</b>	Two
<b>Actual Date</b>		<b>Projected Date</b>	06/30/2021
<b>Actual Cost</b>	\$0.00	<b>Contractor</b>	
<b>Comments</b>	No Comments	<b>New Value</b>	0
<b>Assignment</b>	None		
<b>Designated Staff</b>			



## Botany Street - Tweedy Lane to Guatemala Avenue

### Sidewalks - Exterior : Sidewalks , Change in Level

---

#### North Side

#### Change In Level West Of Alderdale Street @ 33.968086489570, -118.124133646488

Sidewalks , Change in Level : Change in Level Non Beveled

#### Finding

There is a change in elevation greater than recommended value.

**On-Site Finding** 0.75 inches

#### Recommendation

Ensure that the change in elevation is within the recommended value.

Recommendation Up to 0.25 inches

#### Costing Info (Estimated)

Remove tripping hazards \$198



**Code Reference** ADA 206, 302

#### Progress

---

<b>Record Number</b>	346721	<b>Resolution</b>	None
<b>Progress</b>	Not_Started	<b>Priority</b>	Two
<b>Actual Date</b>		<b>Projected Date</b>	06/30/2021
<b>Actual Cost</b>	\$0.00	<b>Contractor</b>	
<b>Comments</b>	No Comments	<b>New Value</b>	0
<b>Assignment</b>	None		
<b>Designated Staff</b>			

## Botany Street - Tweedy Lane to Guatemala Avenue

### Sidewalks - Exterior : Sidewalks , Change in Level

---

#### North Side

#### Change In Level West Of Alderdale Street @ 33.968110958925, -118.124192655087

Sidewalks , Change in Level : Change in Level Non Beveled

#### Finding

There is a change in elevation greater than recommended value.

**On-Site Finding** 0.50 inches

#### Recommendation

Ensure that the change in elevation is within the recommended value.

Recommendation Up to 0.25 inches

#### Costing Info (Estimated)

Remove tripping hazards \$198



**Code Reference** ADA 206, 302

#### Progress

---

<b>Record Number</b>	346711	<b>Resolution</b>	None
<b>Progress</b>	Not_Started	<b>Priority</b>	Two
<b>Actual Date</b>		<b>Projected Date</b>	06/30/2021
<b>Actual Cost</b>	\$0.00	<b>Contractor</b>	
<b>Comments</b>	No Comments	<b>New Value</b>	0
<b>Assignment</b>	None		
<b>Designated Staff</b>			

## Botany Street - Tweedy Lane to Guatemala Avenue

### Sidewalks - Exterior : Sidewalks , Change in Level

---

#### North Side

#### Change In Level West Of Alderdale Street @ 33.968122081357, -118.124222159386

Sidewalks , Change in Level : Change in Level Non Beveled

#### Finding

There is a change in elevation greater than recommended value.

**On-Site Finding** 0.50 inches

#### Recommendation

Ensure that the change in elevation is within the recommended value.

Recommendation Up to 0.25 inches

#### Costing Info (Estimated)

Remove tripping hazards \$198



**Code Reference** ADA 206, 302

#### Progress

---

<b>Record Number</b>	346707	<b>Resolution</b>	None
<b>Progress</b>	Not_Started	<b>Priority</b>	Two
<b>Actual Date</b>		<b>Projected Date</b>	06/30/2021
<b>Actual Cost</b>	\$0.00	<b>Contractor</b>	
<b>Comments</b>	No Comments	<b>New Value</b>	0
<b>Assignment</b>	None		
<b>Designated Staff</b>			

## Botany Street - Tweedy Lane to Guatemala Avenue

### Sidewalks - Exterior : Sidewalks , Change in Level

---

#### North Side

#### Change In Level West Of Alderdale Street @ 33.96825550424, -118.124495744705

Sidewalks , Change in Level : Change in Level Non Beveled

#### Finding

There is a change in elevation greater than recommended value.

**On-Site Finding** 0.50 inches

#### Recommendation

Ensure that the change in elevation is within the recommended value.

Recommendation Up to 0.25 inches

#### Costing Info (Estimated)

Remove tripping hazards \$198



**Code Reference** ADA 206, 302

#### Progress

---

<b>Record Number</b>	346710	<b>Resolution</b>	None
<b>Progress</b>	Not_Started	<b>Priority</b>	Two
<b>Actual Date</b>		<b>Projected Date</b>	06/30/2021
<b>Actual Cost</b>	\$0.00	<b>Contractor</b>	
<b>Comments</b>	No Comments	<b>New Value</b>	0
<b>Assignment</b>	None		
<b>Designated Staff</b>			

## Botany Street - Tweedy Lane to Guatemala Avenue

### Sidewalks - Exterior : Sidewalks , Change in Level

---

#### North Side

#### Change In Level West Of Alderdale Street @ 33.968315611436, -118.124592304230

Sidewalks , Change in Level : Change in Level Non Beveled

#### Finding

There is a change in elevation greater than recommended value.

**On-Site Finding** 0.50 inches

#### Recommendation

Ensure that the change in elevation is within the recommended value.

Recommendation Up to 0.25 inches

#### Costing Info (Estimated)

Remove tripping hazards \$198



**Code Reference** ADA 206, 302

#### Progress

---

<b>Record Number</b>	346714	<b>Resolution</b>	None
<b>Progress</b>	Not_Started	<b>Priority</b>	Two
<b>Actual Date</b>		<b>Projected Date</b>	06/30/2021
<b>Actual Cost</b>	\$0.00	<b>Contractor</b>	
<b>Comments</b>	No Comments	<b>New Value</b>	0
<b>Assignment</b>	None		
<b>Designated Staff</b>			

## Botany Street - Tweedy Lane to Guatemala Avenue

### Sidewalks - Exterior : Sidewalks , Change in Level

---

#### North Side

#### Change In Level West Of Alderdale Street @ 33.968328958321, -118.124635219574

Sidewalks , Change in Level : Change in Level Non Beveled

#### Finding

There is a change in elevation greater than recommended value.

**On-Site Finding** 0.62 inches

#### Recommendation

Ensure that the change in elevation is within the recommended value.

Recommendation Up to 0.25 inches

#### Costing Info (Estimated)

Remove tripping hazards \$198



**Code Reference** ADA 206, 302

#### Progress

---

<b>Record Number</b>	346705	<b>Resolution</b>	None
<b>Progress</b>	Not_Started	<b>Priority</b>	Two
<b>Actual Date</b>		<b>Projected Date</b>	06/30/2021
<b>Actual Cost</b>	\$0.00	<b>Contractor</b>	
<b>Comments</b>	No Comments	<b>New Value</b>	0
<b>Assignment</b>	None		
<b>Designated Staff</b>			

## Botany Street - Tweedy Lane to Guatemala Avenue

### Sidewalks - Exterior : Sidewalks , Change in Level

---

#### North Side

#### Change In Level West Of Alderdale Street @ 33.968340066, -118.124560117722

Sidewalks , Change in Level : Change in Level Non Beveled

#### Finding

There is a change in elevation greater than recommended value.

**On-Site Finding** 0.50 inches

#### Recommendation

Ensure that the change in elevation is within the recommended value.

Recommendation Up to 0.25 inches

#### Costing Info (Estimated)

Remove tripping hazards \$198



**Code Reference** ADA 206, 302

#### Progress

---

<b>Record Number</b>	346708	<b>Resolution</b>	None
<b>Progress</b>	Not_Started	<b>Priority</b>	Two
<b>Actual Date</b>		<b>Projected Date</b>	06/30/2021
<b>Actual Cost</b>	\$0.00	<b>Contractor</b>	
<b>Comments</b>	No Comments	<b>New Value</b>	0
<b>Assignment</b>	None		
<b>Designated Staff</b>			

## Botany Street - Tweedy Lane to Guatemala Avenue

### Sidewalks - Exterior : Sidewalks , Change in Level

---

#### North Side

#### Change In Level West Of Alderdale Street @ 33.968351203126, -118.124659359455

Sidewalks , Change in Level : Change in Level Non Beveled

#### Finding

There is a change in elevation greater than recommended value.

**On-Site Finding** 0.50 inches

#### Recommendation

Ensure that the change in elevation is within the recommended value.

Recommendation Up to 0.25 inches

#### Costing Info (Estimated)

Remove tripping hazards \$198



**Code Reference** ADA 206, 302

#### Progress

---

<b>Record Number</b>	346713	<b>Resolution</b>	None
<b>Progress</b>	Not_Started	<b>Priority</b>	Two
<b>Actual Date</b>		<b>Projected Date</b>	06/30/2021
<b>Actual Cost</b>	\$0.00	<b>Contractor</b>	
<b>Comments</b>	No Comments	<b>New Value</b>	0
<b>Assignment</b>	None		
<b>Designated Staff</b>			



## Botany Street - Tweedy Lane to Guatemala Avenue

### Sidewalks - Exterior : Sidewalks , Change in Level

---

#### North Side

#### Change In Level West Of Alderdale Street @ 33.968413488549, -118.124793469906

Sidewalks , Change in Level : Change in Level Non Beveled

#### Finding

There is a change in elevation greater than recommended value.

**On-Site Finding** 0.50 inches

#### Recommendation

Ensure that the change in elevation is within the recommended value.

Recommendation Up to 0.25 inches

#### Costing Info (Estimated)

Remove tripping hazards \$198



**Code Reference** ADA 206, 302

#### Progress

---

<b>Record Number</b>	346702	<b>Resolution</b>	None
<b>Progress</b>	Not_Started	<b>Priority</b>	Two
<b>Actual Date</b>		<b>Projected Date</b>	06/30/2021
<b>Actual Cost</b>	\$0.00	<b>Contractor</b>	
<b>Comments</b>	No Comments	<b>New Value</b>	0
<b>Assignment</b>	None		
<b>Designated Staff</b>			

## Botany Street - Tweedy Lane to Guatemala Avenue

### Sidewalks - Exterior : Sidewalks , Change in Level

---

#### North Side

#### Change In Level West Of Tweedy Lane @ 33.967317925795, -118.122628927231

Sidewalks , Change in Level : Change in Level Non Beveled

#### Finding

There is a change in elevation greater than recommended value.

**On-Site Finding** 0.62 inches

#### Recommendation

Ensure that the change in elevation is within the recommended value.

Recommendation Up to 0.25 inches

#### Costing Info (Estimated)

Remove tripping hazards \$198



**Code Reference** ADA 206, 302

#### Progress

---

<b>Record Number</b>	346712	<b>Resolution</b>	None
<b>Progress</b>	Not_Started	<b>Priority</b>	Two
<b>Actual Date</b>		<b>Projected Date</b>	06/30/2021
<b>Actual Cost</b>	\$0.00	<b>Contractor</b>	
<b>Comments</b>	No Comments	<b>New Value</b>	0
<b>Assignment</b>	None		
<b>Designated Staff</b>			

## Botany Street - Tweedy Lane to Guatemala Avenue

### Sidewalks - Exterior : Sidewalks , Change in Level

---

#### North Side

#### Change In Level West Of Tweedy Lane @ 33.967336834104, -118.122663795948

Sidewalks , Change in Level : Change in Level Non Beveled

#### Finding

There is a change in elevation greater than recommended value.

**On-Site Finding** 0.62 inches

#### Recommendation

Ensure that the change in elevation is within the recommended value.

Recommendation Up to 0.25 inches

#### Costing Info (Estimated)

Remove tripping hazards \$198



**Code Reference** ADA 206, 302

#### Progress

---

<b>Record Number</b>	346716	<b>Resolution</b>	None
<b>Progress</b>	Not_Started	<b>Priority</b>	Two
<b>Actual Date</b>		<b>Projected Date</b>	06/30/2021
<b>Actual Cost</b>	\$0.00	<b>Contractor</b>	
<b>Comments</b>	No Comments	<b>New Value</b>	0
<b>Assignment</b>	None		
<b>Designated Staff</b>			

## Botany Street - Tweedy Lane to Guatemala Avenue

### Sidewalks - Exterior : Sidewalks , Change in Level

---

#### North Side

#### Change In Level West Of Tweedy Lane @ 33.967541488477, -118.123063445091

Sidewalks , Change in Level : Change in Level Non Beveled

#### Finding

There is a change in elevation greater than recommended value.

**On-Site Finding** 0.50 inches

#### Recommendation

Ensure that the change in elevation is within the recommended value.

Recommendation Up to 0.25 inches

#### Costing Info (Estimated)

Remove tripping hazards \$198



**Code Reference** ADA 206, 302

#### Progress

---

<b>Record Number</b>	346720	<b>Resolution</b>	None
<b>Progress</b>	Not_Started	<b>Priority</b>	Two
<b>Actual Date</b>		<b>Projected Date</b>	06/30/2021
<b>Actual Cost</b>	\$0.00	<b>Contractor</b>	
<b>Comments</b>	No Comments	<b>New Value</b>	0
<b>Assignment</b>	None		
<b>Designated Staff</b>			

## Botany Street - Tweedy Lane to Guatemala Avenue

### Sidewalks - Exterior : Sidewalks , Change in Level

---

#### North Side

#### Change In Level West Of Tweedy Lane @ 33.967551498733, -118.123087584972

Sidewalks , Change in Level : Change in Level Non Beveled

#### Finding

There is a change in elevation greater than recommended value.

**On-Site Finding** 0.50 inches

#### Recommendation

Ensure that the change in elevation is within the recommended value.

Recommendation Up to 0.25 inches

#### Costing Info (Estimated)

Remove tripping hazards \$198



**Code Reference** ADA 206, 302

#### Progress

---

<b>Record Number</b>	346717	<b>Resolution</b>	None
<b>Progress</b>	Not_Started	<b>Priority</b>	Two
<b>Actual Date</b>		<b>Projected Date</b>	06/30/2021
<b>Actual Cost</b>	\$0.00	<b>Contractor</b>	
<b>Comments</b>	No Comments	<b>New Value</b>	0
<b>Assignment</b>	None		
<b>Designated Staff</b>			

## Botany Street - Tweedy Lane to Guatemala Avenue

### Sidewalks - Exterior : Sidewalks , Change in Level

---

#### South Side

**Change In Level East Of Guatemala Avenue @ 33.967550386483, - 118.123433589935**

Sidewalks , Change in Level : Change in Level Non Beveled

#### Finding

There is a change in elevation greater than recommended value.

**On-Site Finding** 0.62 inches

#### Recommendation

Ensure that the change in elevation is within the recommended value.

Recommendation Up to 0.25 inches

#### Costing Info (Estimated)

Remove tripping hazards \$198



**Code Reference** ADA 206, 302

#### Progress

---

<b>Record Number</b>	346689	<b>Resolution</b>	None
<b>Progress</b>	Not_Started	<b>Priority</b>	Two
<b>Actual Date</b>		<b>Projected Date</b>	06/30/2021
<b>Actual Cost</b>	\$0.00	<b>Contractor</b>	
<b>Comments</b>	No Comments	<b>New Value</b>	0
<b>Assignment</b>	None		
<b>Designated Staff</b>			

## Botany Street - Tweedy Lane to Guatemala Avenue

### Sidewalks - Exterior : Sidewalks , Change in Level

---

#### South Side

#### Change In Level East Of Guatemala Avenue @ 33.967823999684, - 118.123986124992

Sidewalks , Change in Level : Change in Level Non Beveled

#### Finding

There is a change in elevation greater than recommended value.

**On-Site Finding** 0.50 inches

#### Recommendation

Ensure that the change in elevation is within the recommended value.

Recommendation Up to 0.25 inches

#### Costing Info (Estimated)

Remove tripping hazards \$198



**Code Reference** ADA 206, 302

#### Progress

---

<b>Record Number</b>	346685	<b>Resolution</b>	None
<b>Progress</b>	Not_Started	<b>Priority</b>	Two
<b>Actual Date</b>		<b>Projected Date</b>	06/30/2021
<b>Actual Cost</b>	\$0.00	<b>Contractor</b>	
<b>Comments</b>	No Comments	<b>New Value</b>	0
<b>Assignment</b>	None		
<b>Designated Staff</b>			

## Botany Street - Tweedy Lane to Guatemala Avenue

### Sidewalks - Exterior : Sidewalks , Change in Level

---

#### South Side

**Change In Level East Of Guatemala Avenue @ 33.967890734478, - 118.124098777771**

Sidewalks , Change in Level : Change in Level Non Beveled

#### Finding

There is a change in elevation greater than recommended value.

**On-Site Finding** 0.62 inches

#### Recommendation

Ensure that the change in elevation is within the recommended value.

Recommendation Up to 0.25 inches

#### Costing Info (Estimated)

Remove tripping hazards \$198



**Code Reference** ADA 206, 302

#### Progress

---

<b>Record Number</b>	346687	<b>Resolution</b>	None
<b>Progress</b>	Not_Started	<b>Priority</b>	Two
<b>Actual Date</b>		<b>Projected Date</b>	06/30/2021
<b>Actual Cost</b>	\$0.00	<b>Contractor</b>	
<b>Comments</b>	No Comments		
<b>Assignment</b>	None	<b>New Value</b>	0
<b>Designated Staff</b>			



## Botany Street - Tweedy Lane to Guatemala Avenue

### Sidewalks - Exterior : Sidewalks , Change in Level

---

#### South Side

#### Change In Level East Of Guatemala Avenue @ 33.968139877244, - 118.124616444111

Sidewalks , Change in Level : Change in Level Non Beveled

#### Finding

There is a change in elevation greater than recommended value.

**On-Site Finding** 0.87 inches

#### Recommendation

Ensure that the change in elevation is within the recommended value.

Recommendation Up to 0.25 inches

#### Costing Info (Estimated)

Remove tripping hazards \$198



**Code Reference** ADA 206, 302

#### Progress

---

<b>Record Number</b>	346684	<b>Resolution</b>	None
<b>Progress</b>	Not_Started	<b>Priority</b>	Two
<b>Actual Date</b>		<b>Projected Date</b>	06/30/2021
<b>Actual Cost</b>	\$0.00	<b>Contractor</b>	
<b>Comments</b>	No Comments		
<b>Assignment</b>	None	<b>New Value</b>	0
<b>Designated Staff</b>			

## Botany Street - Tweedy Lane to Guatemala Avenue

### Sidewalks - Exterior : Sidewalks , Change in Level

---

#### South Side

**Change In Level East Of Smallwood Avenue @ 33.967156648867, - 118.122685253620**

Sidewalks , Change in Level : Change in Level Non Beveled

#### Finding

There is a change in elevation greater than recommended value.

**On-Site Finding** 1.00 inches

#### Recommendation

Ensure that the change in elevation is within the recommended value.

Recommendation Up to 0.25 inches

#### Costing Info (Estimated)

Remove tripping hazards \$198



**Code Reference** ADA 206, 302

#### Progress

---

<b>Record Number</b>	346679	<b>Resolution</b>	None
<b>Progress</b>	Not_Started	<b>Priority</b>	Two
<b>Actual Date</b>		<b>Projected Date</b>	06/30/2021
<b>Actual Cost</b>	\$0.00	<b>Contractor</b>	
<b>Comments</b>	No Comments	<b>New Value</b>	0
<b>Assignment</b>	None		
<b>Designated Staff</b>			

## Botany Street - Tweedy Lane to Guatemala Avenue

### Sidewalks - Exterior : Sidewalks , Change in Level

---

#### South Side

**Change In Level East Of Smallwood Avenue @ 33.967256751824, - 118.122854232788**

Sidewalks , Change in Level : Change in Level Non Beveled

#### Finding

There is a change in elevation greater than recommended value.

**On-Site Finding** 1.00 inches

#### Recommendation

Ensure that the change in elevation is within the recommended value.

Recommendation Up to 0.25 inches

#### Costing Info (Estimated)

Remove tripping hazards \$198



**Code Reference** ADA 206, 302

#### Progress

---

<b>Record Number</b>	346688	<b>Resolution</b>	None
<b>Progress</b>	Not_Started	<b>Priority</b>	Two
<b>Actual Date</b>		<b>Projected Date</b>	06/30/2021
<b>Actual Cost</b>	\$0.00	<b>Contractor</b>	
<b>Comments</b>	No Comments	<b>New Value</b>	0
<b>Assignment</b>	None		
<b>Designated Staff</b>			

## Botany Street - Tweedy Lane to Guatemala Avenue

### Sidewalks - Exterior : Sidewalks , Change in Level

---

#### South Side

#### Smallwood Avenue South Crossing @ 33.967494773936, -118.123315572739

Sidewalks , Change in Level : Change in Level Non Beveled

#### Finding

There is a change in elevation greater than recommended value.

**On-Site Finding** 1.25 inches

#### Recommendation

Ensure that the change in elevation is within the recommended value.

Recommendation Up to 0.25 inches

#### Costing Info (Estimated)

Remove tripping hazards \$198



**Code Reference** ADA 206, 302

#### Progress

---

<b>Record Number</b>	346683	<b>Resolution</b>	None
<b>Progress</b>	Not_Started	<b>Priority</b>	Two
<b>Actual Date</b>		<b>Projected Date</b>	06/30/2020
<b>Actual Cost</b>	\$0.00	<b>Contractor</b>	
<b>Comments</b>	No Comments	<b>New Value</b>	0
<b>Assignment</b>	None		
<b>Designated Staff</b>			

## Botany Street - Tweedy Lane to Guatemala Avenue

### Sidewalks - Exterior : Sidewalks , Change in Level

---

#### North Side

#### Change In Level West Of Alderdale Street @ 33.967961918200, -118.123908340931

Sidewalks , Change in Level : Change in Level Non Beveled

#### Finding

There is a change in elevation greater than recommended value.

**On-Site Finding** 0.37 inches

#### Recommendation

Ensure that the change in elevation is within the recommended value.

Recommendation Up to 0.25 inches

#### Costing Info (Estimated)

Remove tripping hazards \$198



**Code Reference** ADA 206, 302

#### Progress

---

<b>Record Number</b>	346698	<b>Resolution</b>	None
<b>Progress</b>	Not_Started	<b>Priority</b>	Three
<b>Actual Date</b>		<b>Projected Date</b>	12/31/2022
<b>Actual Cost</b>	\$0.00	<b>Contractor</b>	
<b>Comments</b>	No Comments	<b>New Value</b>	0
<b>Assignment</b>	None		
<b>Designated Staff</b>			

## Botany Street - Tweedy Lane to Guatemala Avenue

### Sidewalks - Exterior : Sidewalks , Change in Level

---

#### North Side

#### Change In Level West Of Alderdale Street @ 33.968006407996, -118.123991489410

Sidewalks , Change in Level : Change in Level Non Beveled

#### Finding

There is a change in elevation greater than recommended value.

**On-Site Finding** 0.37 inches

#### Recommendation

Ensure that the change in elevation is within the recommended value.

Recommendation Up to 0.25 inches

#### Costing Info (Estimated)

Remove tripping hazards \$198



**Code Reference** ADA 206, 302

#### Progress

---

<b>Record Number</b>	346718	<b>Resolution</b>	None
<b>Progress</b>	Not_Started	<b>Priority</b>	Three
<b>Actual Date</b>		<b>Projected Date</b>	12/31/2022
<b>Actual Cost</b>	\$0.00	<b>Contractor</b>	
<b>Comments</b>	No Comments	<b>New Value</b>	0
<b>Assignment</b>	None		
<b>Designated Staff</b>			

## Botany Street - Tweedy Lane to Guatemala Avenue

### Sidewalks - Exterior : Sidewalks , Change in Level

---

#### North Side

#### Change In Level West Of Alderdale Street @ 33.968682650031, -118.125340640545

Sidewalks , Change in Level : Change in Level Non Beveled

#### Finding

There is a change in elevation greater than recommended value.

**On-Site Finding** 0.37 inches

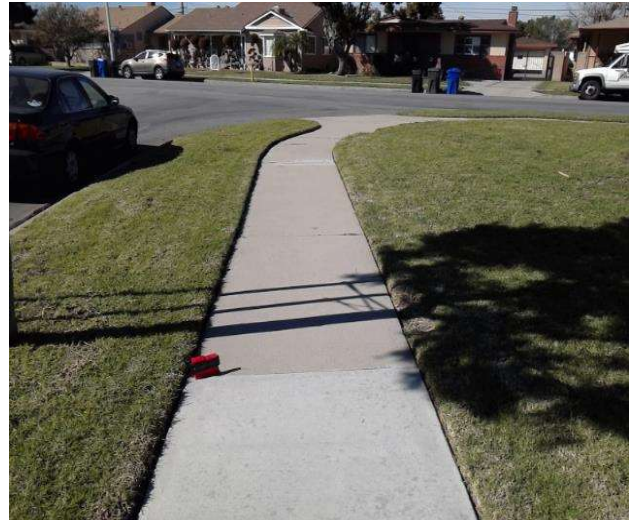
#### Recommendation

Ensure that the change in elevation is within the recommended value.

Recommendation Up to 0.25 inches

#### Costing Info (Estimated)

Remove tripping hazards \$198



**Code Reference** ADA 206, 302

#### Progress

---

<b>Record Number</b>	346715	<b>Resolution</b>	None
<b>Progress</b>	Not_Started	<b>Priority</b>	Three
<b>Actual Date</b>		<b>Projected Date</b>	12/31/2022
<b>Actual Cost</b>	\$0.00	<b>Contractor</b>	
<b>Comments</b>	No Comments	<b>New Value</b>	0
<b>Assignment</b>	None		
<b>Designated Staff</b>			

## Botany Street - Tweedy Lane to Guatemala Avenue

### Sidewalks - Exterior : Sidewalks , Change in Level

---

#### North Side

#### Change In Level West Of Tweedy Lane @ 33.967292343958, -118.122567236423

Sidewalks , Change in Level : Change in Level Non Beveled

#### Finding

There is a change in elevation greater than recommended value.

**On-Site Finding** 0.37 inches

#### Recommendation

Ensure that the change in elevation is within the recommended value.

Recommendation Up to 0.25 inches

#### Costing Info (Estimated)

Remove tripping hazards \$198



**Code Reference** ADA 206, 302

#### Progress

---

<b>Record Number</b>	346709	<b>Resolution</b>	None
<b>Progress</b>	Not_Started	<b>Priority</b>	Three
<b>Actual Date</b>		<b>Projected Date</b>	12/31/2022
<b>Actual Cost</b>	\$0.00	<b>Contractor</b>	
<b>Comments</b>	No Comments	<b>New Value</b>	0
<b>Assignment</b>	None		
<b>Designated Staff</b>			



## Botany Street - Tweedy Lane to Guatemala Avenue

### Sidewalks - Exterior : Sidewalks , Hazards & Gratings

---

#### North Side

**Bush West Of Tweedy Lane @ 33.967292343958, -118.122567236423**

Sidewalks , Hazards & Gratings : Sidewalk Width at Obstruction

#### Finding

Sidewalk width at the obstruction is not compliant.

**On-Site Finding** 40.00 inches

#### Recommendation

Sidewalk width at the obstruction shall have the recommended value.

Recommendation At least 48.00 inches

#### Costing Info (Estimated)

\$1,260



**Code Reference** ADA 206, 302, 403.5.1, CA 11B-403.5

#### Progress

---

<b>Record Number</b>	346719	<b>Resolution</b>	None
<b>Progress</b>	Not_Started	<b>Priority</b>	Seven
<b>Actual Date</b>		<b>Projected Date</b>	06/30/2032
<b>Actual Cost</b>	\$0.00	<b>Contractor</b>	
<b>Comments</b>	No Comments	<b>New Value</b>	0
<b>Assignment</b>	None		
<b>Designated Staff</b>			

## Botany Street - Tweedy Lane to Guatemala Avenue

### Sidewalks - Exterior : Sidewalks , Hazards & Gratings

---

#### North Side

**Northeast Corner Of Guatemala Avenue @ 33.968762730969, -118.125437269**

Sidewalks , Hazards & Gratings : Curb is on Path of Travel

#### Finding

There is a curb on the designated path of travel.

**On-Site Finding** Not Compliant

#### Recommendation

Provide a compliant curb ramp.

Recommendation See Recommendation

#### Costing Info (Estimated)

Install curb ramp \$2,500



**Code Reference** ADA 402, 303, 406, 403.4, 303.4

#### Progress

---

<b>Record Number</b>	346701	<b>Resolution</b>	None
<b>Progress</b>	Not_Started	<b>Priority</b>	Seven
<b>Actual Date</b>		<b>Projected Date</b>	06/30/2032
<b>Actual Cost</b>	\$0.00	<b>Contractor</b>	
<b>Comments</b>	No Comments	<b>New Value</b>	0
<b>Assignment</b>	None		
<b>Designated Staff</b>			

## Botany Street - Tweedy Lane to Guatemala Avenue

### Sidewalks - Exterior : Sidewalks , Hazards & Gratings

---

#### North Side

#### Northwest Corner Of Tweedy Lane @ 33.967236731242, -118.122467994690

Sidewalks , Hazards & Gratings : Curb is on Path of Travel

#### Finding

There is a curb on the designated path of travel.

**On-Site Finding** Not Compliant

#### Recommendation

Provide a compliant curb ramp.

Recommendation See Recommendation

#### Costing Info (Estimated)

Install curb ramp \$2,500



**Code Reference** ADA 402, 303, 406, 403.4, 303.4

#### Progress

---

<b>Record Number</b>	346704	<b>Resolution</b>	None
<b>Progress</b>	Not_Started	<b>Priority</b>	Seven
<b>Actual Date</b>		<b>Projected Date</b>	06/30/2032
<b>Actual Cost</b>	\$0.00	<b>Contractor</b>	
<b>Comments</b>	No Comments	<b>New Value</b>	0
<b>Assignment</b>	None		
<b>Designated Staff</b>			

## Botany Street - Tweedy Lane to Guatemala Avenue

### Sidewalks - Exterior : Sidewalks , Surface

---

#### North Side

#### Sidewalk West Of Alderdale Street @ 33.967683856447, -118.123326301575

Sidewalks , Surface : Cross Slope

#### Finding

Sidewalk cross slope is not compliant.

**On-Site Finding** 3.10 percent for 190.00 feet

#### Recommendation

Repave the sidewalk surface with the recommended cross slope.

Recommendation Up to 2.08 percent

#### Costing Info (Estimated)

Repave surface \$1,092



**Code Reference** ADA 206, 302,CA 11B-403.3

#### Progress

---

<b>Record Number</b>	346694	<b>Resolution</b>	None
<b>Progress</b>	Not_Started	<b>Priority</b>	Seven
<b>Actual Date</b>		<b>Projected Date</b>	06/30/2032
<b>Actual Cost</b>	\$0.00	<b>Contractor</b>	
<b>Comments</b>	No Comments	<b>New Value</b>	0
<b>Assignment</b>	None		
<b>Designated Staff</b>			

## Botany Street - Tweedy Lane to Guatemala Avenue

### Sidewalks - Exterior : Sidewalks , Surface

---

#### North Side

#### Sidewalk West Of Alderdale Street @ 33.967973040651, -118.123935163021

Sidewalks , Surface : Cross Slope

#### Finding

Sidewalk cross slope is not compliant.

**On-Site Finding** 2.90 percent for 77.00 feet

#### Recommendation

Repave the sidewalk surface with the recommended cross slope.

Recommendation Up to 2.08 percent

#### Costing Info (Estimated)

Repave surface \$1,092



**Code Reference** ADA 206, 302, CA 11B-403.3

#### Progress

---

<b>Record Number</b>	346696	<b>Resolution</b>	None
<b>Progress</b>	Not_Started	<b>Priority</b>	Seven
<b>Actual Date</b>		<b>Projected Date</b>	06/30/2032
<b>Actual Cost</b>	\$0.00	<b>Contractor</b>	
<b>Comments</b>	No Comments		
<b>Assignment</b>	None	<b>New Value</b>	0
<b>Designated Staff</b>			

## Botany Street - Tweedy Lane to Guatemala Avenue

### Sidewalks - Exterior : Sidewalks , Surface

---

#### North Side

#### Sidewalk West Of Alderdale Street @ 33.968255550424, -118.124495744705

Sidewalks , Surface : Cross Slope

#### Finding

Sidewalk cross slope is not compliant.

**On-Site Finding** 3.80 percent for 8.00 feet

#### Recommendation

Repave the sidewalk surface with the recommended cross slope.

Recommendation Up to 2.08 percent

#### Costing Info (Estimated)

Repave surface \$1,092



**Code Reference** ADA 206, 302, CA 11B-403.3

#### Progress

---

<b>Record Number</b>	346695	<b>Resolution</b>	None
<b>Progress</b>	Not_Started	<b>Priority</b>	Seven
<b>Actual Date</b>		<b>Projected Date</b>	06/30/2032
<b>Actual Cost</b>	\$0.00	<b>Contractor</b>	
<b>Comments</b>	No Comments	<b>New Value</b>	0
<b>Assignment</b>	None		
<b>Designated Staff</b>			

## Botany Street - Tweedy Lane to Guatemala Avenue

### Sidewalks - Exterior : Sidewalks , Surface

---

#### North Side

#### Sidewalk West Of Alderdale Street @ 33.968351203126, -118.124659359455

Sidewalks , Surface : Cross Slope

#### Finding

Sidewalk cross slope is not compliant.

**On-Site Finding** 2.90 percent for 295.00 feet

#### Recommendation

Repave the sidewalk surface with the recommended cross slope.

Recommendation Up to 2.08 percent

#### Costing Info (Estimated)

Repave surface \$1,092



**Code Reference** ADA 206, 302, CA 11B-403.3

#### Progress

---

<b>Record Number</b>	346697	<b>Resolution</b>	None
<b>Progress</b>	Not_Started	<b>Priority</b>	Seven
<b>Actual Date</b>		<b>Projected Date</b>	06/30/2032
<b>Actual Cost</b>	\$0.00	<b>Contractor</b>	
<b>Comments</b>	No Comments	<b>New Value</b>	0
<b>Assignment</b>	None		
<b>Designated Staff</b>			

## Botany Street - Tweedy Lane to Guatemala Avenue

### Sidewalks - Exterior : Sidewalks , Surface

---

#### North Side

#### Sidewalk West Of Tweedy Lane @ 33.967236731242, -118.122467994690

Sidewalks , Surface : Cross Slope

#### Finding

Sidewalk cross slope is not compliant.

**On-Site Finding** 3.10 percent for 235.00 feet

#### Recommendation

Repave the sidewalk surface with the recommended cross slope.

Recommendation Up to 2.08 percent

#### Costing Info (Estimated)

Repave surface \$1,092



**Code Reference** ADA 206, 302,CA 11B-403.3

#### Progress

---

<b>Record Number</b>	346693	<b>Resolution</b>	None
<b>Progress</b>	Not_Started	<b>Priority</b>	Seven
<b>Actual Date</b>		<b>Projected Date</b>	06/30/2032
<b>Actual Cost</b>	\$0.00	<b>Contractor</b>	
<b>Comments</b>	No Comments	<b>New Value</b>	0
<b>Assignment</b>	None		
<b>Designated Staff</b>			



## Botany Street - Tweedy Lane to Guatemala Avenue

### Sidewalks - Exterior : Sidewalks

---

#### North Side @ 33.967236731242, -118.122467994690

Sidewalks : 60X60 Turn Area

#### Finding

There is no 60X60 turn area at every 200 feet.

**On-Site Finding** Not Found

#### Recommendation

Provide a 60X60 turn every 200 feet on the sidewalk.

Recommendation See Recommendation

#### Costing Info (Estimated)

\$2,400



**Code Reference** ADA 206, 302

### Progress

---

<b>Record Number</b>	346692	<b>Resolution</b>	None
<b>Progress</b>	Not_Started	<b>Priority</b>	Seven
<b>Actual Date</b>		<b>Projected Date</b>	06/30/2032
<b>Actual Cost</b>	\$0.00	<b>Contractor</b>	
<b>Comments</b>	No Comments		
<b>Assignment</b>	None	<b>New Value</b>	0
<b>Designated Staff</b>			

## Botany Street - Tweedy Lane to Guatemala Avenue

### Sidewalks - Exterior : Sidewalks , Hazards & Gratings

---

#### South Side

#### Bush East Of Smallwood Avenue @ 33.967256751824, -118.122854232788

Sidewalks , Hazards & Gratings : Sidewalk Width at Obstruction

#### Finding

Sidewalk width at the obstruction is not compliant.

**On-Site Finding** 35.00 inches

#### Recommendation

Sidewalk width at the obstruction shall have the recommended value.

Recommendation At least 48.00 inches

#### Costing Info (Estimated)

\$1,260



**Code Reference** ADA 206, 302, 403.5.1, CA 11B-403.5

#### Progress

---

<b>Record Number</b>	346681	<b>Resolution</b>	None
<b>Progress</b>	Not_Started	<b>Priority</b>	Seven
<b>Actual Date</b>		<b>Projected Date</b>	06/30/2032
<b>Actual Cost</b>	\$0.00	<b>Contractor</b>	
<b>Comments</b>	No Comments	<b>New Value</b>	0
<b>Assignment</b>	None		
<b>Designated Staff</b>			

**Botany Street - Tweedy Lane to Guatemala Avenue**

**Sidewalks - Exterior : Sidewalks , Surface**

---

**South Side**

**Sidewalk East Of Guatemala Avenue @ 33.967823999684, -118.123986124992**

Sidewalks , Surface : Cross Slope

**Finding**

Sidewalk cross slope is not compliant.

**On-Site Finding** 3.10 percent for 215.00 feet

**Recommendation**

Repave the sidewalk surface with the recommended cross slope.

Recommendation Up to 2.08 percent

**Costing Info (Estimated)**

Repave surface \$1,092



**Code Reference** ADA 206, 302, CA 11B-403.3

**Progress**

---

<b>Record Number</b>	346677	<b>Resolution</b>	None
<b>Progress</b>	Not_Started	<b>Priority</b>	Seven
<b>Actual Date</b>		<b>Projected Date</b>	06/30/2032
<b>Actual Cost</b>	\$0.00	<b>Contractor</b>	
<b>Comments</b>	No Comments	<b>New Value</b>	0
<b>Assignment</b>	None		
<b>Designated Staff</b>			

## Botany Street - Tweedy Lane to Guatemala Avenue

### Sidewalks - Exterior : Sidewalks , Surface

---

#### South Side

#### Sidewalk East Of Guatemala Avenue @ 33.968053122257, -118.124436736107

Sidewalks , Surface : Cross Slope

#### Finding

Sidewalk cross slope is not compliant.

**On-Site Finding** 3.10 percent for 105.00 feet

#### Recommendation

Repave the sidewalk surface with the recommended cross slope.

Recommendation Up to 2.08 percent

#### Costing Info (Estimated)

Repave surface \$1,092



**Code Reference** ADA 206, 302, CA 11B-403.3

#### Progress

---

<b>Record Number</b>	346676	<b>Resolution</b>	None
<b>Progress</b>	Not_Started	<b>Priority</b>	Seven
<b>Actual Date</b>		<b>Projected Date</b>	06/30/2032
<b>Actual Cost</b>	\$0.00	<b>Contractor</b>	
<b>Comments</b>	No Comments		
<b>Assignment</b>	None	<b>New Value</b>	0
<b>Designated Staff</b>			

**Botany Street - Tweedy Lane to Guatemala Avenue**

**Sidewalks - Exterior : Sidewalks , Surface**

---

**South Side**

**Sidewalk East Of Guatemala Avenue @ 33.968664854257, -118.125657141209**

Sidewalks , Surface : Cross Slope

**Finding**

Sidewalk cross slope is not compliant.

**On-Site Finding** 3.80 percent for 350.00 feet

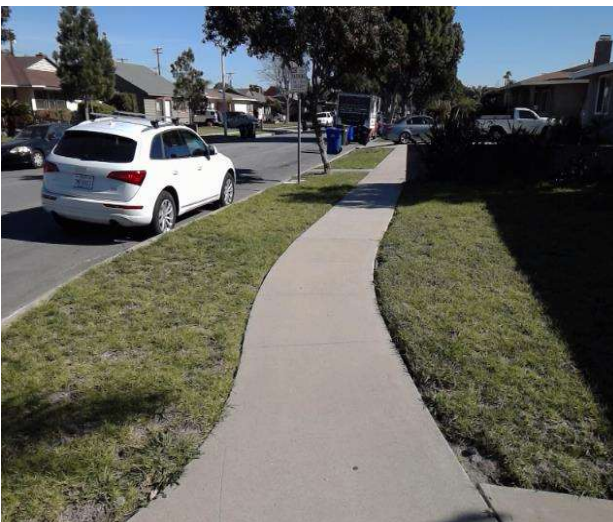
**Recommendation**

Repave the sidewalk surface with the recommended cross slope.

Recommendation Up to 2.08 percent

**Costing Info (Estimated)**

Repave surface \$1,092



**Code Reference** ADA 206, 302, CA 11B-403.3

**Progress**

---

<b>Record Number</b>	346675	<b>Resolution</b>	None
<b>Progress</b>	Not_Started	<b>Priority</b>	Seven
<b>Actual Date</b>		<b>Projected Date</b>	06/30/2032
<b>Actual Cost</b>	\$0.00	<b>Contractor</b>	
<b>Comments</b>	No Comments	<b>New Value</b>	0
<b>Assignment</b>	None		
<b>Designated Staff</b>			

## Botany Street - Tweedy Lane to Guatemala Avenue

### Sidewalks - Exterior : Sidewalks , Hazards & Gratings

---

#### South Side

**Southeast Corner Of Guatemala Avenue @ 33.968664854257, -118.125657141209**

Sidewalks , Hazards & Gratings : Curb is on Path of Travel

#### Finding

There is a curb on the designated path of travel.

**On-Site Finding** Not Compliant

#### Recommendation

Provide a compliant curb ramp.

Recommendation See Recommendation

#### Costing Info (Estimated)

Install curb ramp \$2,500



**Code Reference** ADA 402, 303, 406, 403.4, 303.4

#### Progress

---

<b>Record Number</b>	346686	<b>Resolution</b>	None
<b>Progress</b>	Not_Started	<b>Priority</b>	Seven
<b>Actual Date</b>		<b>Projected Date</b>	06/30/2032
<b>Actual Cost</b>	\$0.00	<b>Contractor</b>	
<b>Comments</b>	No Comments	<b>New Value</b>	0
<b>Assignment</b>	None		
<b>Designated Staff</b>			

## Botany Street - Tweedy Lane to Guatemala Avenue

### Sidewalks - Exterior : Sidewalks , Hazards & Gratings

---

#### South Side

**Southeast Corner Of Smallwood Avenue @ 33.967421365318, -118.123213648796**

Sidewalks , Hazards & Gratings : Curb is on Path of Travel

#### Finding

There is a curb on the designated path of travel.

**On-Site Finding** Not Compliant

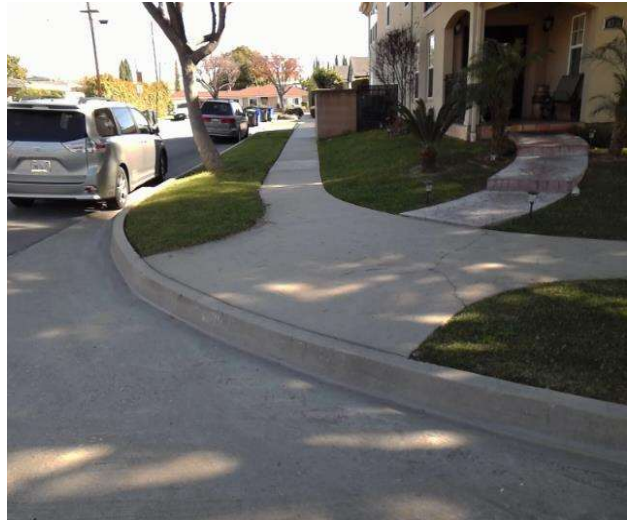
#### Recommendation

Provide a compliant curb ramp.

Recommendation See Recommendation

#### Costing Info (Estimated)

Install curb ramp \$2,500



**Code Reference** ADA 402, 303, 406, 403.4, 303.4

#### Progress

---

<b>Record Number</b>	346680	<b>Resolution</b>	None
<b>Progress</b>	Not_Started	<b>Priority</b>	Seven
<b>Actual Date</b>		<b>Projected Date</b>	06/30/2032
<b>Actual Cost</b>	\$0.00	<b>Contractor</b>	
<b>Comments</b>	No Comments	<b>New Value</b>	0
<b>Assignment</b>	None		
<b>Designated Staff</b>			

## Botany Street - Tweedy Lane to Guatemala Avenue

### Sidewalks - Exterior : Sidewalks , Hazards & Gratings

---

#### South Side

**Southwest Corner Of Smallwood Avenue @ 33.967530365970, -118.123379945755**

Sidewalks , Hazards & Gratings : Curb is on Path of Travel

#### Finding

There is a curb on the designated path of travel.

**On-Site Finding** Not Compliant

#### Recommendation

Provide a compliant curb ramp.

Recommendation See Recommendation

#### Costing Info (Estimated)

Install curb ramp \$2,500



**Code Reference** ADA 402, 303, 406, 403.4, 303.4

#### Progress

---

<b>Record Number</b>	346690	<b>Resolution</b>	None
<b>Progress</b>	Not_Started	<b>Priority</b>	Seven
<b>Actual Date</b>		<b>Projected Date</b>	06/30/2032
<b>Actual Cost</b>	\$0.00	<b>Contractor</b>	
<b>Comments</b>	No Comments	<b>New Value</b>	0
<b>Assignment</b>	None		
<b>Designated Staff</b>			



## Botany Street - Tweedy Lane to Guatemala Avenue

### Sidewalks - Exterior : Sidewalks , Hazards & Gratings

---

#### South Side

#### Southwest Corner Of Tweedy Lane @ 33.967103260576, -118.122572600842

Sidewalks , Hazards & Gratings : Curb is on Path of Travel

#### Finding

There is a curb on the designated path of travel.

**On-Site Finding** Not Compliant

#### Recommendation

Provide a compliant curb ramp.

Recommendation See Recommendation

#### Costing Info (Estimated)

Install curb ramp \$2,500



**Code Reference** ADA 402, 303, 406, 403.4, 303.4

#### Progress

---

<b>Record Number</b>	346682	<b>Resolution</b>	None
<b>Progress</b>	Not_Started	<b>Priority</b>	Seven
<b>Actual Date</b>		<b>Projected Date</b>	06/30/2032
<b>Actual Cost</b>	\$0.00	<b>Contractor</b>	
<b>Comments</b>	No Comments	<b>New Value</b>	0
<b>Assignment</b>	None		
<b>Designated Staff</b>			

## Botany Street - Tweedy Lane to Guatemala Avenue

### Sidewalks - Exterior : Sidewalks

#### South Side @ 33.968664854257, -118.125657141209

Sidewalks : 60X60 Turn Area

#### Finding

There is no 60X60 turn area at every 200 feet.

**On-Site Finding** Not Found

#### Recommendation

Provide a 60X60 turn every 200 feet on the sidewalk.

Recommendation See Recommendation

#### Costing Info (Estimated)

\$2,400



**Code Reference** ADA 206, 302

### Progress

<b>Record Number</b>	346674	<b>Resolution</b>	None
<b>Progress</b>	Not_Started	<b>Priority</b>	Seven
<b>Actual Date</b>		<b>Projected Date</b>	06/30/2032
<b>Actual Cost</b>	\$0.00	<b>Contractor</b>	
<b>Comments</b>	No Comments		
<b>Assignment</b>	None	<b>New Value</b>	0
<b>Designated Staff</b>			

**Botany Street - Tweedy Lane to Guatemala Avenue**



**Botany Street - Tweedy Lane to Guatemala Avenue**

**Tweedy Lane to Guatemala Avenue  
Downey, CA 90240**

Date of Inspection  
1/30/2017

**\*Estimated Facility Total: \$37,194**

\*Estimated facility total is for estimating purposes only and does not represent total construction, repair totals or design fees.

Prepared By

**Disability Access Consultants**

(800) 743-7067

Prepared Using

