

## Accessibility Survey

---



### 4th Place - Old River School Road to Rives Avenue

Old River School Road to Rives Avenue  
Downey, CA 90242

Date of Inspection  
7/5/2017

Prepared By

**Disability Access Consultants**

(800) 743-7067

## 4th Place - Old River School Road to Rives Avenue

### Curb Ramps - Exterior : Curb Ramp

---

**Northeast Corner of Old River School Road @ 33.950543487500, - 118.146485835314**

Curb Ramp : Curb Ramp - Cross Slope

#### Finding

The cross slope is greater than allowed.

**On-Site Finding** 6.10 percent

#### Recommendation

Provide a compliant curb ramp.

Recommendation Up to 2.08 percent

#### Costing Info (Estimated)

Install curb ramp \$1,300



**Code Reference** ADA 402, 406.1, 405.3, CA 11B-406.5.7

#### Progress

---

<b>Record Number</b>	463208	<b>Resolution</b>	None
<b>Progress</b>	Not_Started	<b>Priority</b>	Three
<b>Actual Date</b>		<b>Projected Date</b>	06/30/2021
<b>Actual Cost</b>	\$0.00	<b>Contractor</b>	
<b>Comments</b>	No Comments		
<b>Assignment</b>	None	<b>New Value</b>	0
<b>Designated Staff</b>			

## 4th Place - Old River School Road to Rives Avenue

### Curb Ramps - Exterior : Curb Ramp

**Northeast Corner of Old River School Road @ 33.950543487500, - 118.146485835314**

Curb Ramp : Appurtenances

#### Finding

Utilities, gratings or other appurtenances are located on the curb ramp.

**On-Site Finding** Not Compliant

#### Recommendation

Provide a compliant curb ramp free of appurtenances.

Recommendation See Recommendation

#### Costing Info (Estimated)

Install curb ramp \$1,440



**Code Reference** ADA 303.3,CA 11B-303.3

### Progress

<b>Record Number</b>	463209	<b>Resolution</b>	None
<b>Progress</b>	Not_Started	<b>Priority</b>	Three
<b>Actual Date</b>		<b>Projected Date</b>	06/30/2021
<b>Actual Cost</b>	\$0.00	<b>Contractor</b>	
<b>Comments</b>	No Comments		
<b>Assignment</b>	None	<b>New Value</b>	0
<b>Designated Staff</b>			

**4th Place - Old River School Road to Rives Avenue**

**Curb Ramps - Exterior : Curb Ramp**

**Southeast Corner of Old River School Road @ 33.950396640945, - 118.146595805883**

Curb Ramp : Curb Ramp - Cross Slope

**Finding**

The cross slope is greater than allowed.

**On-Site Finding** 5.30 percent

**Recommendation**

Provide a compliant curb ramp.

Recommendation Up to 2.08 percent

**Costing Info (Estimated)**

Install curb ramp \$1,300



**Code Reference** ADA 402, 406.1, 405.3, CA 11B-406.5.7

**Progress**

<b>Record Number</b>	463210	<b>Resolution</b>	None
<b>Progress</b>	Not_Started	<b>Priority</b>	Three
<b>Actual Date</b>		<b>Projected Date</b>	06/30/2021
<b>Actual Cost</b>	\$0.00	<b>Contractor</b>	
<b>Comments</b>	No Comments	<b>New Value</b>	0
<b>Assignment</b>	None		
<b>Designated Staff</b>			

**4th Place - Old River School Road to Rives Avenue**

**Sidewalks - Exterior : Sidewalks**

**North Side @ 33.950514563198, -118.146473765373**

Sidewalks : No Sidewalk

**Finding**

No sidewalk exists at the location.

**On-Site Finding** Not Found

**Recommendation**

No action necessary until a sidewalk is provided.

Recommendation See Recommendation

**Costing Info (Estimated)**

Unassigned



**Code Reference** ADA 206

**Progress**

<b>Record Number</b>	463094	<b>Resolution</b>	None
<b>Progress</b>	Not_Started	<b>Priority</b>	Three
<b>Actual Date</b>		<b>Projected Date</b>	06/30/2021
<b>Actual Cost</b>	\$0.00	<b>Contractor</b>	
<b>Comments</b>	No Comments	<b>New Value</b>	0
<b>Assignment</b>	None		
<b>Designated Staff</b>			

**4th Place - Old River School Road to Rives Avenue**

**Sidewalks - Exterior : Sidewalks**

**South Side @ 33.950399978369, -118.146550208330**

Sidewalks : No Sidewalk

**Finding**

No sidewalk exists at the location.

**On-Site Finding** Not Found

**Recommendation**

No action necessary until a sidewalk is provided.

Recommendation See Recommendation

**Costing Info (Estimated)**

Unassigned



**Code Reference** ADA 206

**Progress**

<b>Record Number</b>	463093	<b>Resolution</b>	None
<b>Progress</b>	Not_Started	<b>Priority</b>	Three
<b>Actual Date</b>		<b>Projected Date</b>	06/30/2021
<b>Actual Cost</b>	\$0.00	<b>Contractor</b>	
<b>Comments</b>	No Comments		
<b>Assignment</b>	None	<b>New Value</b>	0
<b>Designated Staff</b>			

**4th Place - Old River School Road to Rives Avenue**



**4th Place - Old River School Road to Rives Avenue**

Old River School Road to Rives Avenue  
Downey, CA 90242

Date of Inspection  
7/5/2017

**\*Estimated Facility Total: \$4,040**

\*Estimated facility total is for estimating purposes only and does not represent total construction, repair totals or design fees.

Prepared By

**Disability Access Consultants**

(800) 743-7067

Prepared Using



## Accessibility Survey

---



### 4th Place - Rives Avenue To Paramount Boulevard

Rives Avenue To Paramount Boulevard  
Downey, CA 90241

Date of Inspection  
2/2/2017

Prepared By

**Disability Access Consultants**

(800) 743-7067



## 4th Place - Rives Avenue To Paramount Boulevard

### Curb Ramps - Exterior : Curb Ramp

#### Northwest Corner Of Paramount Boulevard @ 33.945374781273, -118.136226385832

Curb Ramp : No Detectable Warnings

#### Finding

The curb ramp does not provide a detectable warning surface which includes truncated domes.

**On-Site Finding** Not Found

#### Recommendation

Provide compliant detectable warnings to surface.

Recommendation See Recommendation

#### Costing Info (Estimated)

Provide detectable warning to surface \$248



**Code Reference** CA 11B-406.5.12

### Progress

<b>Record Number</b>	349822	<b>Resolution</b>	None
<b>Progress</b>	Not_Started	<b>Priority</b>	Three
<b>Actual Date</b>		<b>Projected Date</b>	06/30/2021
<b>Actual Cost</b>	\$0.00	<b>Contractor</b>	
<b>Comments</b>	No Comments	<b>New Value</b>	0
<b>Assignment</b>	None		
<b>Designated Staff</b>			

**4th Place - Rives Avenue To Paramount Boulevard**

**Curb Ramps - Exterior : Curb Ramp**

**Northwest Corner Of Paramount Boulevard @ 33.945374781273, - 118.136226385832**

Curb Ramp : Not Wholly Contained Within The Marked Crossing

**Finding**

The curb ramp is not wholly contained within the marked crossing.

**On-Site Finding** Not Found

**Recommendation**

Provide a marked crossing on the path of travel; make certain the curb ramp is wholly contained within the marked crossing.

Recommendation See Recommendation

**Costing Info (Estimated)**

Install crosswalk \$800



**Code Reference** ADA 406, 406.5

**Progress**

<b>Record Number</b>	349823	<b>Resolution</b>	None
<b>Progress</b>	Not_Started	<b>Priority</b>	Three
<b>Actual Date</b>		<b>Projected Date</b>	06/30/2021
<b>Actual Cost</b>	\$0.00	<b>Contractor</b>	
<b>Comments</b>	No Comments	<b>New Value</b>	0
<b>Assignment</b>	None		
<b>Designated Staff</b>			

## 4th Place - Rives Avenue To Paramount Boulevard

### Curb Ramps - Exterior : Curb Ramp

#### Northwest Corner Of Paramount Boulevard @ 33.945374781273, -118.136226385832

Curb Ramp : Curb Ramp Width

#### Finding

The width of the curb ramp is less than required.

**On-Site Finding** 40.50 inches

#### Recommendation

Provide a compliant curb ramp.

Recommendation At least 48.00 inches

#### Costing Info (Estimated)

Install curb ramp \$1,300



**Code Reference** ADA 406, 406.1, 405.5, CA 11B-406.5.2

### Progress

<b>Record Number</b>	349824	<b>Resolution</b>	None
<b>Progress</b>	Not_Started	<b>Priority</b>	Three
<b>Actual Date</b>		<b>Projected Date</b>	06/30/2021
<b>Actual Cost</b>	\$0.00	<b>Contractor</b>	
<b>Comments</b>	No Comments		
<b>Assignment</b>	None	<b>New Value</b>	0
<b>Designated Staff</b>			

## 4th Place - Rives Avenue To Paramount Boulevard

### Curb Ramps - Exterior : Curb Ramp

#### Northwest Corner Of Paramount Boulevard @ 33.945374781273, -118.136226385832

Curb Ramp : Curb Ramp Slope

#### Finding

The running slope is greater than allowed.

**On-Site Finding** 10.80 percent

#### Recommendation

Provide a compliant curb ramp.

Recommendation Up to 8.33 percent

#### Costing Info (Estimated)

Install curb ramp \$1,300



**Code Reference** ADA 406, 406.1, 405.2, CA 11B-406

#### Progress

<b>Record Number</b>	349825	<b>Resolution</b>	None
<b>Progress</b>	Not_Started	<b>Priority</b>	Three
<b>Actual Date</b>		<b>Projected Date</b>	06/30/2021
<b>Actual Cost</b>	\$0.00	<b>Contractor</b>	
<b>Comments</b>	No Comments	<b>New Value</b>	0
<b>Assignment</b>	None		
<b>Designated Staff</b>			

## 4th Place - Rives Avenue To Paramount Boulevard

### Curb Ramps - Exterior : Curb Ramp

#### Northwest Corner Of Paramount Boulevard @ 33.945374781273, - 118.136226385832

Curb Ramp : Side Flare Slope

#### Finding

The slope of the curb ramp side flare is greater than allowed.

**On-Site Finding** 15.00 percent

#### Recommendation

Provide curb ramp side flares with a compliant slope.

Recommendation Up to 10.00 percent

#### Costing Info (Estimated)

Install flared sides \$1,300



**Code Reference** ADA 406, 406.3, CA 11B-406.2.2

### Progress

<b>Record Number</b>	349826	<b>Resolution</b>	None
<b>Progress</b>	Not_Started	<b>Priority</b>	Three
<b>Actual Date</b>		<b>Projected Date</b>	06/30/2021
<b>Actual Cost</b>	\$0.00	<b>Contractor</b>	
<b>Comments</b>	No Comments		
<b>Assignment</b>	None	<b>New Value</b>	0
<b>Designated Staff</b>			

## 4th Place - Rives Avenue To Paramount Boulevard

### Curb Ramps - Exterior : Curb Ramp , Landings And Transitions

---

#### Northwest Corner Of Paramount Boulevard @ 33.945374781273, - 118.136226385832

##### Bottom Landing

##### Finding

The transition from the bottom of the curb ramp to the walk, gutter, or street is abrupt.

**On-Site Finding** 0.62 inches

##### Recommendation

Patch the transition area at the bottom of the curb ramp so that the transition is flush and free of abrupt changes.

Recommendation Up to 0.50 inches

##### Costing Info (Estimated)

Patch lip at curb ramp \$255

Curb Ramp , Landings And Transitions : Bottom Landing Change in Level



**Code Reference** ADA 302, 303, 406.2, 303.1

### Progress

---

<b>Record Number</b>	349827	<b>Resolution</b>	None
<b>Progress</b>	Not_Started	<b>Priority</b>	Three
<b>Actual Date</b>		<b>Projected Date</b>	06/30/2021
<b>Actual Cost</b>	\$0.00	<b>Contractor</b>	
<b>Comments</b>	No Comments		
<b>Assignment</b>	None	<b>New Value</b>	0
<b>Designated Staff</b>			

## 4th Place - Rives Avenue To Paramount Boulevard

### Curb Ramps - Exterior : Curb Ramp , Landings and Transitions

---

#### Northwest Corner Of Paramount Boulevard @ 33.945374781273, - 118.136226385832

##### Top Landing

##### Finding

There is not enough top landing clear length.

**On-Site Finding** 47.00 inches

##### Recommendation

Provide a level top landing with enough clear length.

Recommendation At least 48.00 inches

##### Costing Info (Estimated)

Provide compliant landing \$240

Curb Ramp , Landings and Transitions : Top Landing Clear Length - Landings



**Code Reference** ADA 406, 406.4, CA 11B-406.5.3

##### Progress

---

<b>Record Number</b>	349828	<b>Resolution</b>	None
<b>Progress</b>	Not_Started	<b>Priority</b>	Three
<b>Actual Date</b>		<b>Projected Date</b>	06/30/2021
<b>Actual Cost</b>	\$0.00	<b>Contractor</b>	
<b>Comments</b>	No Comments		
<b>Assignment</b>	None	<b>New Value</b>	0
<b>Designated Staff</b>			

## 4th Place - Rives Avenue To Paramount Boulevard

### Curb Ramps - Exterior : Curb Ramp

**Southwest Corner Of Paramount Boulevard @ 33.945230150885, - 118.136352449656**

Curb Ramp : No Detectable Warnings

#### Finding

The curb ramp does not provide a detectable warning surface which includes truncated domes.

**On-Site Finding** Not Found

#### Recommendation

Provide compliant detectable warnings to surface.

Recommendation See Recommendation

#### Costing Info (Estimated)

Provide detectable warning to surface \$248



**Code Reference** CA 11B-406.5.12

### Progress

<b>Record Number</b>	349781	<b>Resolution</b>	None
<b>Progress</b>	Not_Started	<b>Priority</b>	Three
<b>Actual Date</b>		<b>Projected Date</b>	06/30/2021
<b>Actual Cost</b>	\$0.00	<b>Contractor</b>	
<b>Comments</b>	No Comments	<b>New Value</b>	0
<b>Assignment</b>	None		
<b>Designated Staff</b>			



**4th Place - Rives Avenue To Paramount Boulevard**

**Curb Ramps - Exterior : Curb Ramp**

**Southwest Corner Of Paramount Boulevard @ 33.945230150885, - 118.136352449656**

Curb Ramp : Not Wholly Contained Within The Marked Crossing

**Finding**

The curb ramp is not wholly contained within the marked crossing.

**On-Site Finding** Not Found

**Recommendation**

Provide a marked crossing on the path of travel; make certain the curb ramp is wholly contained within the marked crossing.

Recommendation See Recommendation

**Costing Info (Estimated)**

Install crosswalk \$800



**Code Reference** ADA 406, 406.5

**Progress**

<b>Record Number</b>	349782	<b>Resolution</b>	None
<b>Progress</b>	Not_Started	<b>Priority</b>	Three
<b>Actual Date</b>		<b>Projected Date</b>	06/30/2021
<b>Actual Cost</b>	\$0.00	<b>Contractor</b>	
<b>Comments</b>	No Comments	<b>New Value</b>	0
<b>Assignment</b>	None		
<b>Designated Staff</b>			

## 4th Place - Rives Avenue To Paramount Boulevard

### Curb Ramps - Exterior : Curb Ramp

#### Southwest Corner Of Paramount Boulevard @ 33.945230150885, - 118.136352449656

Curb Ramp : Curb Ramp Width

#### Finding

The width of the curb ramp is less than required.

**On-Site Finding** 44.00 inches

#### Recommendation

Provide a compliant curb ramp.

Recommendation At least 48.00 inches

#### Costing Info (Estimated)

Install curb ramp \$1,300



**Code Reference** ADA 406, 406.1, 405.5, CA 11B-406.5.2

### Progress

<b>Record Number</b>	349783	<b>Resolution</b>	None
<b>Progress</b>	Not_Started	<b>Priority</b>	Three
<b>Actual Date</b>		<b>Projected Date</b>	06/30/2021
<b>Actual Cost</b>	\$0.00	<b>Contractor</b>	
<b>Comments</b>	No Comments	<b>New Value</b>	0
<b>Assignment</b>	None		
<b>Designated Staff</b>			

## 4th Place - Rives Avenue To Paramount Boulevard

### Curb Ramps - Exterior : Curb Ramp

#### Southwest Corner Of Paramount Boulevard @ 33.945230150885, - 118.136352449656

Curb Ramp : Curb Ramp Slope

#### Finding

The running slope is greater than allowed.

**On-Site Finding** 12.40 percent

#### Recommendation

Provide a compliant curb ramp.

Recommendation Up to 8.33 percent

#### Costing Info (Estimated)

Install curb ramp \$1,300



**Code Reference** ADA 406, 406.1, 405.2, CA 11B-406

#### Progress

<b>Record Number</b>	349784	<b>Resolution</b>	None
<b>Progress</b>	Not_Started	<b>Priority</b>	Three
<b>Actual Date</b>		<b>Projected Date</b>	06/30/2021
<b>Actual Cost</b>	\$0.00	<b>Contractor</b>	
<b>Comments</b>	No Comments	<b>New Value</b>	0
<b>Assignment</b>	None		
<b>Designated Staff</b>			

## 4th Place - Rives Avenue To Paramount Boulevard

### Curb Ramps - Exterior : Curb Ramp

#### Southwest Corner Of Paramount Boulevard @ 33.945230150885, - 118.136352449656

Curb Ramp : Side Flare Slope

#### Finding

The slope of the curb ramp side flare is greater than allowed.

**On-Site Finding** 20.60 percent

#### Recommendation

Provide curb ramp side flares with a compliant slope.

Recommendation Up to 10.00 percent

#### Costing Info (Estimated)

Install flared sides \$1,300



**Code Reference** ADA 406, 406.3, CA 11B-406.2.2

### Progress

<b>Record Number</b>	349785	<b>Resolution</b>	None
<b>Progress</b>	Not_Started	<b>Priority</b>	Three
<b>Actual Date</b>		<b>Projected Date</b>	06/30/2021
<b>Actual Cost</b>	\$0.00	<b>Contractor</b>	
<b>Comments</b>	No Comments		
<b>Assignment</b>	None	<b>New Value</b>	0
<b>Designated Staff</b>			

## 4th Place - Rives Avenue To Paramount Boulevard

### Curb Ramps - Exterior : Curb Ramp , Landings and Transitions

---

#### Southwest Corner Of Paramount Boulevard @ 33.945230150885, - 118.136352449656

##### Bottom Landing

Curb Ramp , Landings and Transitions : Landing Accumulates Water - Wet Conditions

##### Finding

The curb ramp landing accumulates water.

**On-Site Finding** Accumulates Water

##### Recommendation

Provide sufficient clear space at the bottom of the curb ramp that does not accumulate water.

Recommendation See Recommendation

##### Costing Info (Estimated)

Provide compliant landing \$255



**Code Reference** ADA 405, 406.1, 405.10

### Progress

---

<b>Record Number</b>	349786	<b>Resolution</b>	None
<b>Progress</b>	Not_Started	<b>Priority</b>	Three
<b>Actual Date</b>		<b>Projected Date</b>	06/30/2021
<b>Actual Cost</b>	\$0.00	<b>Contractor</b>	
<b>Comments</b>	No Comments	<b>New Value</b>	0
<b>Assignment</b>	None		
<b>Designated Staff</b>			

## 4th Place - Rives Avenue To Paramount Boulevard

### Curb Ramps - Exterior : Curb Ramp , Landings and Transitions

---

#### Southwest Corner Of Paramount Boulevard @ 33.945230150885, - 118.136352449656

##### Top Landing

Curb Ramp , Landings and Transitions : Top Landing Slope

##### Finding

The slope at the top landing is greater than allowed.

**On-Site Finding** 2.50 percent

##### Recommendation

Provide a top landing surface that does not exceed the maximum slope and cross slope. Provide a sufficient maneuvering clearance that does not accumulate water.

Recommendation Up to 2.08 percent

##### Costing Info (Estimated)

Provide compliant landing \$1,260



**Code Reference** ADA 402, 406.4, 403.3, 406.1, CA 11B-406.5.3

### Progress

---

<b>Record Number</b>	349787	<b>Resolution</b>	None
<b>Progress</b>	Not_Started	<b>Priority</b>	Three
<b>Actual Date</b>		<b>Projected Date</b>	06/30/2021
<b>Actual Cost</b>	\$0.00	<b>Contractor</b>	
<b>Comments</b>	No Comments		
<b>Assignment</b>	None	<b>New Value</b>	0
<b>Designated Staff</b>			

**4th Place - Rives Avenue To Paramount Boulevard**

**Curb Ramps - Exterior : Curb Ramp , Landings and Transitions**

---

**Southwest Corner Of Paramount Boulevard @ 33.945230150885, - 118.136352449656**

**Top Landing**

**Finding**

There is not enough top landing clear length.

**On-Site Finding** 41.00 inches

**Recommendation**

Provide a level top landing with enough clear length.

Recommendation At least 48.00 inches

**Costing Info (Estimated)**

Provide compliant landing \$240

Curb Ramp , Landings and Transitions : Top Landing Clear Length - Landings



**Code Reference** ADA 406, 406.4,CA 11B-406.5.3

**Progress**

---

<b>Record Number</b>	349788	<b>Resolution</b>	None
<b>Progress</b>	Not_Started	<b>Priority</b>	Three
<b>Actual Date</b>		<b>Projected Date</b>	06/30/2021
<b>Actual Cost</b>	\$0.00	<b>Contractor</b>	
<b>Comments</b>	No Comments		
<b>Assignment</b>	None	<b>New Value</b>	0
<b>Designated Staff</b>			

## 4th Place - Rives Avenue To Paramount Boulevard

### Sidewalks - Exterior : Sidewalks

---

#### North Side

**Alley East Of Smallwood Avenue @ 33.945427070660, -118.136546909809**

Sidewalks : Vehicular Traffic Cross Slope

#### Finding

Cross slope at vehicular traffic is not compliant.

**On-Site Finding** 4.70 percent

#### Recommendation

Repave the surface to provide a compliant cross slope.

Recommendation Up to 2.08 percent

#### Costing Info (Estimated)

Repave surface \$1,092



**Code Reference** ADA 206, 302, CA 11B-403.3

#### Progress

---

<b>Record Number</b>	349803	<b>Resolution</b>	None
<b>Progress</b>	Not_Started	<b>Priority</b>	Three
<b>Actual Date</b>		<b>Projected Date</b>	06/30/2021
<b>Actual Cost</b>	\$0.00	<b>Contractor</b>	
<b>Comments</b>	No Comments		
<b>Assignment</b>	None	<b>New Value</b>	0
<b>Designated Staff</b>			



## 4th Place - Rives Avenue To Paramount Boulevard

### Sidewalks - Exterior : Sidewalks , Change in Level

---

#### North Side

#### Change In Level East Of Rives Avenue @ 33.946725394726, -118.139361888170

Sidewalks , Change in Level : Change in Level Non Beveled

#### Finding

There is a change in elevation greater than recommended value.

**On-Site Finding** 1.00 inches

#### Recommendation

Ensure that the change in elevation is within the recommended value.

Recommendation Up to 0.25 inches

#### Costing Info (Estimated)

Remove tripping hazards \$198



**Code Reference** ADA 206, 302

#### Progress

---

<b>Record Number</b>	349799	<b>Resolution</b>	None
<b>Progress</b>	Not_Started	<b>Priority</b>	Three
<b>Actual Date</b>		<b>Projected Date</b>	06/30/2021
<b>Actual Cost</b>	\$0.00	<b>Contractor</b>	
<b>Comments</b>	No Comments	<b>New Value</b>	0
<b>Assignment</b>	None		
<b>Designated Staff</b>			

**4th Place - Rives Avenue To Paramount Boulevard**

**Sidewalks - Exterior : Sidewalks , Change in Level**

---

**North Side**

**Change In Level East Of Rives Avenue @ 33.946914523400, -118.139717280865**

Sidewalks , Change in Level : Change in Level Non Beveled

**Finding**

There is a change in elevation greater than recommended value.

**On-Site Finding** 0.62 inches

**Recommendation**

Ensure that the change in elevation is within the recommended value.

Recommendation Up to 0.25 inches

**Costing Info (Estimated)**

Remove tripping hazards \$198



**Code Reference** ADA 206, 302

**Progress**

---

<b>Record Number</b>	349802	<b>Resolution</b>	None
<b>Progress</b>	Not_Started	<b>Priority</b>	Three
<b>Actual Date</b>		<b>Projected Date</b>	06/30/2021
<b>Actual Cost</b>	\$0.00	<b>Contractor</b>	
<b>Comments</b>	No Comments		
<b>Assignment</b>	None	<b>New Value</b>	0
<b>Designated Staff</b>			

## 4th Place - Rives Avenue To Paramount Boulevard

### Sidewalks - Exterior : Sidewalks , Change in Level

---

#### North Side

#### Change In Level East Of Smallwood Avenue @ 33.945410382561, - 118.136418163776

Sidewalks , Change in Level : Change in Level Non Beveled

#### Finding

There is a change in elevation greater than recommended value.

**On-Site Finding** 0.75 inches

#### Recommendation

Ensure that the change in elevation is within the recommended value.

Recommendation Up to 0.25 inches

#### Costing Info (Estimated)

Remove tripping hazards \$198



**Code Reference** ADA 206, 302

#### Progress

---

<b>Record Number</b>	349798	<b>Resolution</b>	None
<b>Progress</b>	Not_Started	<b>Priority</b>	Three
<b>Actual Date</b>		<b>Projected Date</b>	06/30/2021
<b>Actual Cost</b>	\$0.00	<b>Contractor</b>	
<b>Comments</b>	No Comments		
<b>Assignment</b>	None	<b>New Value</b>	0
<b>Designated Staff</b>			

## 4th Place - Rives Avenue To Paramount Boulevard

### Sidewalks - Exterior : Sidewalks , Change in Level

---

#### North Side

**Change In Level East Of Smallwood Avenue @ 33.946314872805, - 118.138551861048**

Sidewalks , Change in Level : Change in Level Non Beveled

#### Finding

There is a change in elevation greater than recommended value.

**On-Site Finding** 0.62 inches

#### Recommendation

Ensure that the change in elevation is within the recommended value.

Recommendation Up to 0.25 inches

#### Costing Info (Estimated)

Remove tripping hazards \$198



**Code Reference** ADA 206, 302

#### Progress

---

<b>Record Number</b>	349796	<b>Resolution</b>	None
<b>Progress</b>	Not_Started	<b>Priority</b>	Three
<b>Actual Date</b>		<b>Projected Date</b>	06/30/2021
<b>Actual Cost</b>	\$0.00	<b>Contractor</b>	
<b>Comments</b>	No Comments		
<b>Assignment</b>	None	<b>New Value</b>	0
<b>Designated Staff</b>			

## 4th Place - Rives Avenue To Paramount Boulevard

### Sidewalks - Exterior : Sidewalks , Change in Level

---

#### North Side

**Change In Level East Of Smallwood Avenue @ 33.946366049087, - 118.138656467199**

Sidewalks , Change in Level : Change in Level Non Beveled

#### Finding

There is a change in elevation greater than recommended value.

**On-Site Finding** 0.50 inches

#### Recommendation

Ensure that the change in elevation is within the recommended value.

Recommendation Up to 0.25 inches

#### Costing Info (Estimated)

Remove tripping hazards \$198



**Code Reference** ADA 206, 302

#### Progress

---

<b>Record Number</b>	349794	<b>Resolution</b>	None
<b>Progress</b>	Not_Started	<b>Priority</b>	Three
<b>Actual Date</b>		<b>Projected Date</b>	06/30/2021
<b>Actual Cost</b>	\$0.00	<b>Contractor</b>	
<b>Comments</b>	No Comments		
<b>Assignment</b>	None	<b>New Value</b>	0
<b>Designated Staff</b>			

## 4th Place - Rives Avenue To Paramount Boulevard

### Sidewalks - Exterior : Sidewalks , Hazards & Gratings

---

#### North Side

#### Curb East Of Rives Avenue @ 33.946453938718, -118.138806670904

Sidewalks , Hazards & Gratings : Curb is on Path of Travel

#### Finding

There is a curb on the designated path of travel.

**On-Site Finding** Not Compliant

#### Recommendation

Provide a compliant curb ramp.

Recommendation See Recommendation

#### Costing Info (Estimated)

Install curb ramp \$2,500



**Code Reference** ADA 402, 303, 406, 403.4, 303.4

#### Progress

---

<b>Record Number</b>	349795	<b>Resolution</b>	None
<b>Progress</b>	Not_Started	<b>Priority</b>	Three
<b>Actual Date</b>		<b>Projected Date</b>	06/30/2021
<b>Actual Cost</b>	\$0.00	<b>Contractor</b>	
<b>Comments</b>	No Comments	<b>New Value</b>	0
<b>Assignment</b>	None		
<b>Designated Staff</b>			

## 4th Place - Rives Avenue To Paramount Boulevard

### Sidewalks - Exterior : Sidewalks , Hazards & Gratings

---

#### North Side

#### Curb East Of Rives Avenue @ 33.946542940783, -118.138979673386

Sidewalks , Hazards & Gratings : Curb is on Path of Travel

#### Finding

There is a curb on the designated path of travel.

**On-Site Finding** Not Compliant

#### Recommendation

Provide a compliant curb ramp.

Recommendation See Recommendation

#### Costing Info (Estimated)

Install curb ramp \$2,500



**Code Reference** ADA 402, 303, 406, 403.4, 303.4

#### Progress

---

<b>Record Number</b>	349801	<b>Resolution</b>	None
<b>Progress</b>	Not_Started	<b>Priority</b>	Three
<b>Actual Date</b>		<b>Projected Date</b>	06/30/2021
<b>Actual Cost</b>	\$0.00	<b>Contractor</b>	
<b>Comments</b>	No Comments	<b>New Value</b>	0
<b>Assignment</b>	None		
<b>Designated Staff</b>			

## 4th Place - Rives Avenue To Paramount Boulevard

### Sidewalks - Exterior : Sidewalks , Hazards & Gratings

---

#### North Side

#### Curb East Of Smallwood Avenue @ 33.945421507961, -118.136478513479

Sidewalks , Hazards & Gratings : Curb is on Path of Travel

#### Finding

There is a curb on the designated path of travel.

**On-Site Finding** Not Compliant

#### Recommendation

Provide a compliant curb ramp.

Recommendation See Recommendation

#### Costing Info (Estimated)

Install curb ramp \$2,500



**Code Reference** ADA 402, 303, 406, 403.4, 303.4

#### Progress

---

<b>Record Number</b>	349797	<b>Resolution</b>	None
<b>Progress</b>	Not_Started	<b>Priority</b>	Three
<b>Actual Date</b>		<b>Projected Date</b>	06/30/2021
<b>Actual Cost</b>	\$0.00	<b>Contractor</b>	
<b>Comments</b>	No Comments	<b>New Value</b>	0
<b>Assignment</b>	None		
<b>Designated Staff</b>			



**4th Place - Rives Avenue To Paramount Boulevard**

**Sidewalks - Exterior : Sidewalks , Hazards & Gratings**

---

**North Side**

**Curb East Of Smallwood Avenue @ 33.945437083518, -118.136603236198**

Sidewalks , Hazards & Gratings : Curb is on Path of Travel

**Finding**

There is a curb on the designated path of travel.

**On-Site Finding** Not Compliant

**Recommendation**

Provide a compliant curb ramp.

Recommendation See Recommendation

**Costing Info (Estimated)**

Install curb ramp \$2,500



**Code Reference** ADA 402, 303, 406, 403.4, 303.4

**Progress**

---

<b>Record Number</b>	349800	<b>Resolution</b>	None
<b>Progress</b>	Not_Started	<b>Priority</b>	Three
<b>Actual Date</b>		<b>Projected Date</b>	06/30/2021
<b>Actual Cost</b>	\$0.00	<b>Contractor</b>	
<b>Comments</b>	No Comments	<b>New Value</b>	0
<b>Assignment</b>	None		
<b>Designated Staff</b>			

## 4th Place - Rives Avenue To Paramount Boulevard

### Sidewalks - Exterior : Sidewalks , Surface

---

#### North Side

#### Sidewalk East Of Rives Avenue @ 33.946881147782, -118.139660954475

Sidewalks , Surface : Cross Slope

#### Finding

Sidewalk cross slope is not compliant.

**On-Site Finding** 3.20 percent for 240.00 feet

#### Recommendation

Repave the sidewalk surface with the recommended cross slope.

Recommendation Up to 2.08 percent

#### Costing Info (Estimated)

Repave surface \$1,092



**Code Reference** ADA 206, 302,CA 11B-403.3

#### Progress

---

<b>Record Number</b>	349791	<b>Resolution</b>	None
<b>Progress</b>	Not_Started	<b>Priority</b>	Three
<b>Actual Date</b>		<b>Projected Date</b>	06/30/2021
<b>Actual Cost</b>	\$0.00	<b>Contractor</b>	
<b>Comments</b>	No Comments		
<b>Assignment</b>	None	<b>New Value</b>	0
<b>Designated Staff</b>			

## 4th Place - Rives Avenue To Paramount Boulevard

### Sidewalks - Exterior : Sidewalks , Surface

---

#### North Side

#### Sidewalk East Of Rives Avenue @ 33.947169290185, -118.140221536160

Sidewalks , Surface : Cross Slope

#### Finding

Sidewalk cross slope is not compliant.

**On-Site Finding** 3.90 percent for 65.00 feet

#### Recommendation

Repave the sidewalk surface with the recommended cross slope.

Recommendation Up to 2.08 percent

#### Costing Info (Estimated)

Repave surface \$1,092



**Code Reference** ADA 206, 302, CA 11B-403.3

#### Progress

---

<b>Record Number</b>	349792	<b>Resolution</b>	None
<b>Progress</b>	Not_Started	<b>Priority</b>	Three
<b>Actual Date</b>		<b>Projected Date</b>	06/30/2021
<b>Actual Cost</b>	\$0.00	<b>Contractor</b>	
<b>Comments</b>	No Comments		
<b>Assignment</b>	None	<b>New Value</b>	0
<b>Designated Staff</b>			

**4th Place - Rives Avenue To Paramount Boulevard**

**Sidewalks - Exterior : Sidewalks , Surface**

---

**North Side**

**Sidewalk East Of Smallwod Avenue @ 33.945738581239, -118.137428015471**

Sidewalks , Surface : Cross Slope

**Finding**

Sidewalk cross slope is not compliant.

**On-Site Finding** 3.30 percent for 88.00 feet

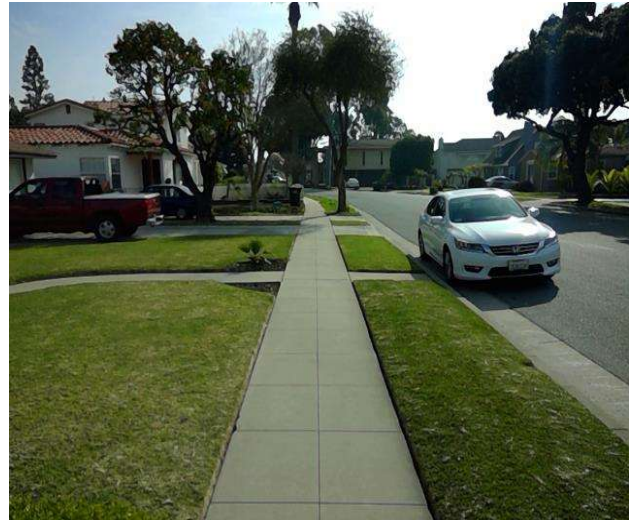
**Recommendation**

Repave the sidewalk surface with the recommended cross slope.

Recommendation Up to 2.08 percent

**Costing Info (Estimated)**

Repave surface \$1,092



**Code Reference** ADA 206, 302,CA 11B-403.3

**Progress**

---

<b>Record Number</b>	349790	<b>Resolution</b>	None
<b>Progress</b>	Not_Started	<b>Priority</b>	Three
<b>Actual Date</b>		<b>Projected Date</b>	06/30/2021
<b>Actual Cost</b>	\$0.00	<b>Contractor</b>	
<b>Comments</b>	No Comments		
<b>Assignment</b>	None	<b>New Value</b>	0
<b>Designated Staff</b>			

**4th Place - Rives Avenue To Paramount Boulevard**

**Sidewalks - Exterior : Sidewalks , Surface**

---

**North Side**

**Sidewalk East Of Smallwod Avenue @ 33.946152443531, -118.138228654861**

Sidewalks , Surface : Cross Slope

**Finding**

Sidewalk cross slope is not compliant.

**On-Site Finding** 3.30 percent for 125.00 feet

**Recommendation**

Repave the sidewalk surface with the recommended cross slope.

Recommendation Up to 2.08 percent

**Costing Info (Estimated)**

Repave surface \$1,092



**Code Reference** ADA 206, 302,CA 11B-403.3

**Progress**

---

<b>Record Number</b>	349789	<b>Resolution</b>	None
<b>Progress</b>	Not_Started	<b>Priority</b>	Three
<b>Actual Date</b>		<b>Projected Date</b>	06/30/2021
<b>Actual Cost</b>	\$0.00	<b>Contractor</b>	
<b>Comments</b>	No Comments		
<b>Assignment</b>	None	<b>New Value</b>	0
<b>Designated Staff</b>			

**4th Place - Rives Avenue To Paramount Boulevard**

**Sidewalks - Exterior : Sidewalks , Surface**

---

**North Side**

**Sidewalk East Of Smallwood Avenue @ 33.946366049087, -118.138656467199**

Sidewalks , Surface : Cross Slope

**Finding**

Sidewalk cross slope is not compliant.

**On-Site Finding** 3.00 percent for 70.00 feet

**Recommendation**

Repave the sidewalk surface with the recommended cross slope.

Recommendation Up to 2.08 percent

**Costing Info (Estimated)**

Repave surface \$1,092



**Code Reference** ADA 206, 302, CA 11B-403.3

**Progress**

---

<b>Record Number</b>	349793	<b>Resolution</b>	None
<b>Progress</b>	Not_Started	<b>Priority</b>	Three
<b>Actual Date</b>		<b>Projected Date</b>	06/30/2021
<b>Actual Cost</b>	\$0.00	<b>Contractor</b>	
<b>Comments</b>	No Comments		
<b>Assignment</b>	None	<b>New Value</b>	0
<b>Designated Staff</b>			

## 4th Place - Rives Avenue To Paramount Boulevard

### Sidewalks - Exterior : Sidewalks , Change in Level

---

#### South Side

**Change In Level West Of Paramount Boulevard @ 33.945455996690, - 118.137226849794**

Sidewalks , Change in Level : Change in Level Non Beveled

#### Finding

There is a change in elevation greater than recommended value.

**On-Site Finding** 0.37 inches

#### Recommendation

Ensure that the change in elevation is within the recommended value.

Recommendation Up to 0.25 inches

#### Costing Info (Estimated)

Remove tripping hazards \$198



**Code Reference** ADA 206, 302

#### Progress

---

<b>Record Number</b>	349817	<b>Resolution</b>	None
<b>Progress</b>	Not_Started	<b>Priority</b>	Three
<b>Actual Date</b>		<b>Projected Date</b>	06/30/2021
<b>Actual Cost</b>	\$0.00	<b>Contractor</b>	
<b>Comments</b>	No Comments	<b>New Value</b>	0
<b>Assignment</b>	None		
<b>Designated Staff</b>			

**4th Place - Rives Avenue To Paramount Boulevard**

**Sidewalks - Exterior : Sidewalks , Change in Level**

---

**South Side**

**Change In Level West Of Paramount Boulevard @ 33.945481585094, - 118.137275129557**

Sidewalks , Change in Level : Change in Level Non Beveled

**Finding**

There is a change in elevation greater than recommended value.

**On-Site Finding** 0.62 inches

**Recommendation**

Ensure that the change in elevation is within the recommended value.

Recommendation Up to 0.25 inches

**Costing Info (Estimated)**

Remove tripping hazards \$198



**Code Reference** ADA 206, 302

**Progress**

---

<b>Record Number</b>	349816	<b>Resolution</b>	None
<b>Progress</b>	Not_Started	<b>Priority</b>	Three
<b>Actual Date</b>		<b>Projected Date</b>	06/30/2021
<b>Actual Cost</b>	\$0.00	<b>Contractor</b>	
<b>Comments</b>	No Comments		
<b>Assignment</b>	None	<b>New Value</b>	0
<b>Designated Staff</b>			



## 4th Place - Rives Avenue To Paramount Boulevard

### Sidewalks - Exterior : Sidewalks , Change in Level

---

#### South Side

#### Change In Level West Of Paramount Boulevard @ 33.945512736183, - 118.137336820364

Sidewalks , Change in Level : Change in Level Non Beveled

#### Finding

There is a change in elevation greater than recommended value.

**On-Site Finding** 0.50 inches

#### Recommendation

Ensure that the change in elevation is within the recommended value.

Recommendation Up to 0.25 inches

#### Costing Info (Estimated)

Remove tripping hazards \$198



**Code Reference** ADA 206, 302

#### Progress

---

<b>Record Number</b>	349813	<b>Resolution</b>	None
<b>Progress</b>	Not_Started	<b>Priority</b>	Three
<b>Actual Date</b>		<b>Projected Date</b>	06/30/2021
<b>Actual Cost</b>	\$0.00	<b>Contractor</b>	
<b>Comments</b>	No Comments	<b>New Value</b>	0
<b>Assignment</b>	None		
<b>Designated Staff</b>			

**4th Place - Rives Avenue To Paramount Boulevard**

**Sidewalks - Exterior : Sidewalks , Change in Level**

---

**South Side**

**Change In Level West Of Paramount Boulevard @ 33.946251458673, - 118.138771802187**

Sidewalks , Change in Level : Change in Level Non Beveled

**Finding**

There is a change in elevation greater than recommended value.

**On-Site Finding** 1.00 inches

**Recommendation**

Ensure that the change in elevation is within the recommended value.

Recommendation Up to 0.25 inches

**Costing Info (Estimated)**

Remove tripping hazards \$198



**Code Reference** ADA 206, 302

**Progress**

---

<b>Record Number</b>	349815	<b>Resolution</b>	None
<b>Progress</b>	Not_Started	<b>Priority</b>	Three
<b>Actual Date</b>		<b>Projected Date</b>	06/30/2021
<b>Actual Cost</b>	\$0.00	<b>Contractor</b>	
<b>Comments</b>	No Comments	<b>New Value</b>	0
<b>Assignment</b>	None		
<b>Designated Staff</b>			

## 4th Place - Rives Avenue To Paramount Boulevard

### Sidewalks - Exterior : Sidewalks , Change in Level

---

#### South Side

**Change In Level West Of Smallwood Avenue @ 33.946643067995, - 118.139533549547**

Sidewalks , Change in Level : Change in Level Non Beveled

#### Finding

There is a change in elevation greater than recommended value.

**On-Site Finding** 0.37 inches

#### Recommendation

Ensure that the change in elevation is within the recommended value.

Recommendation Up to 0.25 inches

#### Costing Info (Estimated)

Remove tripping hazards \$198



**Code Reference** ADA 206, 302

#### Progress

---

<b>Record Number</b>	349818	<b>Resolution</b>	None
<b>Progress</b>	Not_Started	<b>Priority</b>	Three
<b>Actual Date</b>		<b>Projected Date</b>	06/30/2021
<b>Actual Cost</b>	\$0.00	<b>Contractor</b>	
<b>Comments</b>	No Comments	<b>New Value</b>	0
<b>Assignment</b>	None		
<b>Designated Staff</b>			

**4th Place - Rives Avenue To Paramount Boulevard**

**Sidewalks - Exterior : Sidewalks , Surface**

---

**South Side**

**Change In Level West Of Smallwood Avenue @ 33.946893385510, - 118.140028417110**

Sidewalks , Surface : Cross Slope

**Finding**

Sidewalk cross slope is not compliant.

**On-Site Finding** 2.90 percent for 100.00 feet

**Recommendation**

Repave the sidewalk surface with the recommended cross slope.

Recommendation Up to 2.08 percent

**Costing Info (Estimated)**

Repave surface \$1,092



**Code Reference** ADA 206, 302, CA 11B-403.3

**Progress**

---

<b>Record Number</b>	349808	<b>Resolution</b>	None
<b>Progress</b>	Not_Started	<b>Priority</b>	Three
<b>Actual Date</b>		<b>Projected Date</b>	06/30/2021
<b>Actual Cost</b>	\$0.00	<b>Contractor</b>	
<b>Comments</b>	No Comments	<b>New Value</b>	0
<b>Assignment</b>	None		
<b>Designated Staff</b>			

## 4th Place - Rives Avenue To Paramount Boulevard

### Sidewalks - Exterior : Sidewalks , Hazards & Gratings

---

#### South Side

#### Curb West Of Paramount Boulevard @ 33.946319322918, -118.138923346996

Sidewalks , Hazards & Gratings : Curb is on Path of Travel

#### Finding

There is a curb on the designated path of travel.

**On-Site Finding** Not Compliant

#### Recommendation

Provide a compliant curb ramp.

Recommendation See Recommendation

#### Costing Info (Estimated)

Install curb ramp \$2,500



**Code Reference** ADA 402, 303, 406, 403.4, 303.4

#### Progress

---

<b>Record Number</b>	349814	<b>Resolution</b>	None
<b>Progress</b>	Not_Started	<b>Priority</b>	Three
<b>Actual Date</b>		<b>Projected Date</b>	06/30/2021
<b>Actual Cost</b>	\$0.00	<b>Contractor</b>	
<b>Comments</b>	No Comments	<b>New Value</b>	0
<b>Assignment</b>	None		
<b>Designated Staff</b>			

**4th Place - Rives Avenue To Paramount Boulevard**

**Sidewalks - Exterior : Sidewalks , Hazards & Gratings**

---

**South Side**

**Curb West Of Paramount Boulevard @ 33.946399424907, -118.139093667269**

Sidewalks , Hazards & Gratings : Curb is on Path of Travel

**Finding**

There is a curb on the designated path of travel.

**On-Site Finding** Not Compliant

**Recommendation**

Provide a compliant curb ramp.

Recommendation See Recommendation

**Costing Info (Estimated)**

Install curb ramp \$2,500



**Code Reference** ADA 402, 303, 406, 403.4, 303.4

**Progress**

---

<b>Record Number</b>	349819	<b>Resolution</b>	None
<b>Progress</b>	Not_Started	<b>Priority</b>	Three
<b>Actual Date</b>		<b>Projected Date</b>	06/30/2021
<b>Actual Cost</b>	\$0.00	<b>Contractor</b>	
<b>Comments</b>	No Comments	<b>New Value</b>	0
<b>Assignment</b>	None		
<b>Designated Staff</b>			

## 4th Place - Rives Avenue To Paramount Boulevard

### Sidewalks - Exterior : Sidewalks , Vehicular Traffic

---

#### South Side

#### Driveway West Of Paramount Boulevard @ 33.945283552903, -118.136608600616

Sidewalks , Vehicular Traffic : Cross Walks and Detectable Warnings

#### Finding

There are no detectable warnings where the pedestrian route crosses vehicular traffic.

**On-Site Finding** Not Found

#### Recommendation

Provide detectable warnings.

Recommendation See Recommendation

#### Costing Info (Estimated)

Install compliant detectable warnings \$190



**Code Reference** ADA 705,CA 11B-705.1.2.5,CA 11B-247.1.2.5

#### Progress

---

<b>Record Number</b>	349820	<b>Resolution</b>	None
<b>Progress</b>	Not_Started	<b>Priority</b>	Three
<b>Actual Date</b>		<b>Projected Date</b>	06/30/2021
<b>Actual Cost</b>	\$0.00	<b>Contractor</b>	
<b>Comments</b>	No Comments	<b>New Value</b>	0
<b>Assignment</b>	None		
<b>Designated Staff</b>			

## 4th Place - Rives Avenue To Paramount Boulevard

### Sidewalks - Exterior : Sidewalks

---

#### South Side

**Driveway West Of Paramount Boulevard @ 33.945283552903, -118.136608600616**

Sidewalks : Vehicular Traffic Cross Slope

#### Finding

Cross slope at vehicular traffic is not compliant.

**On-Site Finding** 8.70 percent

#### Recommendation

Repave the surface to provide a compliant cross slope.

Recommendation Up to 2.08 percent

#### Costing Info (Estimated)

Repave surface \$1,092



**Code Reference** ADA 206, 302, CA 11B-403.3

### Progress

---

<b>Record Number</b>	349821	<b>Resolution</b>	None
<b>Progress</b>	Not_Started	<b>Priority</b>	Three
<b>Actual Date</b>		<b>Projected Date</b>	06/30/2021
<b>Actual Cost</b>	\$0.00	<b>Contractor</b>	
<b>Comments</b>	No Comments		
<b>Assignment</b>	None	<b>New Value</b>	0
<b>Designated Staff</b>			



**4th Place - Rives Avenue To Paramount Boulevard**

**Sidewalks - Exterior : Sidewalks , Surface**

---

**South Side**

**Sidewalk West Of Paramount Boulevard @ 33.945262414608, -118.136446326971**

Sidewalks , Surface : Not Slip Resistant

**Finding**

Sidewalk surface is not slip resistant.

**On-Site Finding** Not Compliant

**Recommendation**

Make sure that the sidewalk surface is firm, stable and slip resistant.

Recommendation See Recommendation

**Costing Info (Estimated)**

\$1,260



**Code Reference** ADA 206, 302

**Progress**

---

<b>Record Number</b>	349810	<b>Resolution</b>	None
<b>Progress</b>	Not_Started	<b>Priority</b>	Three
<b>Actual Date</b>		<b>Projected Date</b>	06/30/2021
<b>Actual Cost</b>	\$0.00	<b>Contractor</b>	
<b>Comments</b>	No Comments	<b>New Value</b>	0
<b>Assignment</b>	None		
<b>Designated Staff</b>			

**4th Place - Rives Avenue To Paramount Boulevard**

**Sidewalks - Exterior : Sidewalks , Surface**

---

**South Side**

**Sidewalk West Of Paramount Boulevard @ 33.945262414608, -118.136446326971**

Sidewalks , Surface : Cross Slope

**Finding**

Sidewalk cross slope is not compliant.

**On-Site Finding** 2.80 percent for 15.00 feet

**Recommendation**

Repave the sidewalk surface with the recommended cross slope.

Recommendation Up to 2.08 percent

**Costing Info (Estimated)**

Repave surface \$1,092



**Code Reference** ADA 206, 302, CA 11B-403.3

**Progress**

---

<b>Record Number</b>	349811	<b>Resolution</b>	None
<b>Progress</b>	Not_Started	<b>Priority</b>	Three
<b>Actual Date</b>		<b>Projected Date</b>	06/30/2021
<b>Actual Cost</b>	\$0.00	<b>Contractor</b>	
<b>Comments</b>	No Comments		
<b>Assignment</b>	None	<b>New Value</b>	0
<b>Designated Staff</b>			

**4th Place - Rives Avenue To Paramount Boulevard**

**Sidewalks - Exterior : Sidewalks , Surface**

---

**South Side**

**Sidewalk West Of Paramount Boulevard @ 33.945262414608, -118.136446326971**

Sidewalks , Surface : Running Slope

**Finding**

Sidewalk running slope is not compliant.

**On-Site Finding** 8.30 percent for 4.00 feet

**Recommendation**

Repave the sidewalk surface with the recommended running slope.

Recommendation Up to 5.00 percent

**Costing Info (Estimated)**

Repave surface \$1,184



**Code Reference** ADA 206, 302

**Progress**

---

<b>Record Number</b>	349812	<b>Resolution</b>	None
<b>Progress</b>	Not_Started	<b>Priority</b>	Three
<b>Actual Date</b>		<b>Projected Date</b>	06/30/2021
<b>Actual Cost</b>	\$0.00	<b>Contractor</b>	
<b>Comments</b>	No Comments	<b>New Value</b>	0
<b>Assignment</b>	None		
<b>Designated Staff</b>			

## 4th Place - Rives Avenue To Paramount Boulevard

### Sidewalks - Exterior : Sidewalks , Surface

---

#### South Side

#### Sidewalk West Of Paramount Boulevard @ 33.945322491853, -118.136790990829

Sidewalks , Surface : Cross Slope

#### Finding

Sidewalk cross slope is not compliant.

**On-Site Finding** 3.30 percent for 25.00 feet

#### Recommendation

Repave the sidewalk surface with the recommended cross slope.

Recommendation Up to 2.08 percent

#### Costing Info (Estimated)

Repave surface \$1,092



**Code Reference** ADA 206, 302, CA 11B-403.3

#### Progress

---

<b>Record Number</b>	349809	<b>Resolution</b>	None
<b>Progress</b>	Not_Started	<b>Priority</b>	Three
<b>Actual Date</b>		<b>Projected Date</b>	06/30/2021
<b>Actual Cost</b>	\$0.00	<b>Contractor</b>	
<b>Comments</b>	No Comments	<b>New Value</b>	0
<b>Assignment</b>	None		
<b>Designated Staff</b>			

**4th Place - Rives Avenue To Paramount Boulevard**

**Sidewalks - Exterior : Sidewalks , Surface**

---

**South Side**

**Sidewalk West Of Paramount Boulevard @ 33.945360318245, -118.136951923370**

Sidewalks , Surface : Cross Slope

**Finding**

Sidewalk cross slope is not compliant.

**On-Site Finding** 3.10 percent for 58.00 feet

**Recommendation**

Repave the sidewalk surface with the recommended cross slope.

Recommendation Up to 2.08 percent

**Costing Info (Estimated)**

Repave surface \$1,092



**Code Reference** ADA 206, 302, CA 11B-403.3

**Progress**

---

<b>Record Number</b>	349807	<b>Resolution</b>	None
<b>Progress</b>	Not_Started	<b>Priority</b>	Three
<b>Actual Date</b>		<b>Projected Date</b>	06/30/2021
<b>Actual Cost</b>	\$0.00	<b>Contractor</b>	
<b>Comments</b>	No Comments		
<b>Assignment</b>	None	<b>New Value</b>	0
<b>Designated Staff</b>			

**4th Place - Rives Avenue To Paramount Boulevard**

**Sidewalks - Exterior : Sidewalks , Surface**

---

**South Side**

**Sidewalk West Of Paramount Boulevard @ 33.945512736183, -118.137336820364**

Sidewalks , Surface : Cross Slope

**Finding**

Sidewalk cross slope is not compliant.

**On-Site Finding** 3.60 percent for 75.00 feet

**Recommendation**

Repave the sidewalk surface with the recommended cross slope.

Recommendation Up to 2.08 percent

**Costing Info (Estimated)**

Repave surface \$1,092



**Code Reference** ADA 206, 302,CA 11B-403.3

**Progress**

---

<b>Record Number</b>	349804	<b>Resolution</b>	None
<b>Progress</b>	Not_Started	<b>Priority</b>	Three
<b>Actual Date</b>		<b>Projected Date</b>	06/30/2021
<b>Actual Cost</b>	\$0.00	<b>Contractor</b>	
<b>Comments</b>	No Comments	<b>New Value</b>	0
<b>Assignment</b>	None		
<b>Designated Staff</b>			

**4th Place - Rives Avenue To Paramount Boulevard**

**Sidewalks - Exterior : Sidewalks , Surface**

---

**South Side**

**Sidewalk West Of Paramount Boulevard @ 33.946080129028, -118.138435184956**

Sidewalks , Surface : Cross Slope

**Finding**

Sidewalk cross slope is not compliant.

**On-Site Finding** 3.90 percent for 225.00 feet

**Recommendation**

Repave the sidewalk surface with the recommended cross slope.

Recommendation Up to 2.08 percent

**Costing Info (Estimated)**

Repave surface \$1,092



**Code Reference** ADA 206, 302, CA 11B-403.3

**Progress**

---

<b>Record Number</b>	349806	<b>Resolution</b>	None
<b>Progress</b>	Not_Started	<b>Priority</b>	Three
<b>Actual Date</b>		<b>Projected Date</b>	06/30/2021
<b>Actual Cost</b>	\$0.00	<b>Contractor</b>	
<b>Comments</b>	No Comments		
<b>Assignment</b>	None	<b>New Value</b>	0
<b>Designated Staff</b>			

## 4th Place - Rives Avenue To Paramount Boulevard

### Sidewalks - Exterior : Sidewalks , Surface

---

#### South Side

#### Sidewalk West Of Paramount Boulevard @ 33.946170244014, -118.138624280691

Sidewalks , Surface : Cross Slope

#### Finding

Sidewalk cross slope is not compliant.

**On-Site Finding** 3.20 percent for 93.00 feet

#### Recommendation

Repave the sidewalk surface with the recommended cross slope.

Recommendation Up to 2.08 percent

#### Costing Info (Estimated)

Repave surface \$1,092



**Code Reference** ADA 206, 302, CA 11B-403.3

#### Progress

---

<b>Record Number</b>	349805	<b>Resolution</b>	None
<b>Progress</b>	Not_Started	<b>Priority</b>	Three
<b>Actual Date</b>		<b>Projected Date</b>	06/30/2021
<b>Actual Cost</b>	\$0.00	<b>Contractor</b>	
<b>Comments</b>	No Comments	<b>New Value</b>	0
<b>Assignment</b>	None		
<b>Designated Staff</b>			



**4th Place - Rives Avenue To Paramount Boulevard**



**4th Place - Rives Avenue To Paramount Boulevard**

**Rives Avenue To Paramount Boulevard  
Downey, CA 90241**

Date of Inspection  
2/2/2017

**\*Estimated Facility Total: \$47,048**

\*Estimated facility total is for estimating purposes only and does not represent total construction, repair totals or design fees.

Prepared By

**Disability Access Consultants**

(800) 743-7067

Prepared Using

