

# Accessibility Survey

---



## City of Downey Hasty Avenue - Buell Street to End

Buell Street to End  
Downey, CA 90242

Date of Inspection  
6/13/2017

Prepared By

**Disability Access Consultants**

(800) 743-7067

**Hasty Avenue - Buell Street to End**

**Sidewalks - Exterior : Sidewalks**

**East Side @ 33.936130180306, -118.112428486347**

Sidewalks : No Sidewalk

**Finding**

No sidewalk exists at the location.

**On-Site Finding** Not Found

**Recommendation**

No action necessary until a sidewalk is provided.

Recommendation See Recommendation

**Costing Info (Estimated)**

Unassigned



**Code Reference** ADA 206

**Progress**

<b>Record Number</b>	446720	<b>Resolution</b>	None
<b>Progress</b>	Not_Started	<b>Priority</b>	Five
<b>Actual Date</b>		<b>Projected Date</b>	06/30/2025
<b>Actual Cost</b>	\$0.00	<b>Contractor</b>	
<b>Comments</b>	No Comments		
<b>Assignment</b>	None	<b>New Value</b>	0
<b>Designated Staff</b>			

**Hasty Avenue - Buell Street to End**

**Sidewalks - Exterior : Sidewalks**

**West Side @ 33.936210291883, -118.112576007843**

Sidewalks : No Sidewalk

**Finding**

No sidewalk exists at the location.

**On-Site Finding** Not Found

**Recommendation**

No action necessary until a sidewalk is provided.

Recommendation See Recommendation

**Costing Info (Estimated)**

Unassigned



**Code Reference** ADA 206

**Progress**

<b>Record Number</b>	446721	<b>Resolution</b>	None
<b>Progress</b>	Not_Started	<b>Priority</b>	Five
<b>Actual Date</b>		<b>Projected Date</b>	06/30/2025
<b>Actual Cost</b>	\$0.00	<b>Contractor</b>	
<b>Comments</b>	No Comments		
<b>Assignment</b>	None	<b>New Value</b>	0
<b>Designated Staff</b>			

**Hasty Avenue - Buell Street to End**



**Hasty Avenue - Buell Street to End**

**Buell Street to End  
Downey, CA 90242**

Date of Inspection  
6/13/2017

**\*Estimated Facility Total: \$0**

\*Estimated facility total is for estimating purposes only and does not represent total construction, repair totals or design fees.

Prepared By

**Disability Access Consultants**

(800) 743-7067

Prepared Using





# Accessibility Survey

---



## City of Downey Hasty Avenue - Cedartree Road to Brookpark Road

Cedartree Road to Brookpark Road  
Downey, CA 90242

Date of Inspection  
6/15/2017

Prepared By

**Disability Access Consultants**

(800) 743-7067

## Hasty Avenue - Cedartree Road to Brookpark Road

### Sidewalks - Exterior : Sidewalks , Change in Level

---

#### East Side

#### Change in Level South of Cedartree Road @ 33.950796018482, -118.101997375488

Sidewalks , Change in Level : Change in Level Non Beveled

#### Finding

There is a change in elevation greater than recommended value.

**On-Site Finding** 0.75 inches

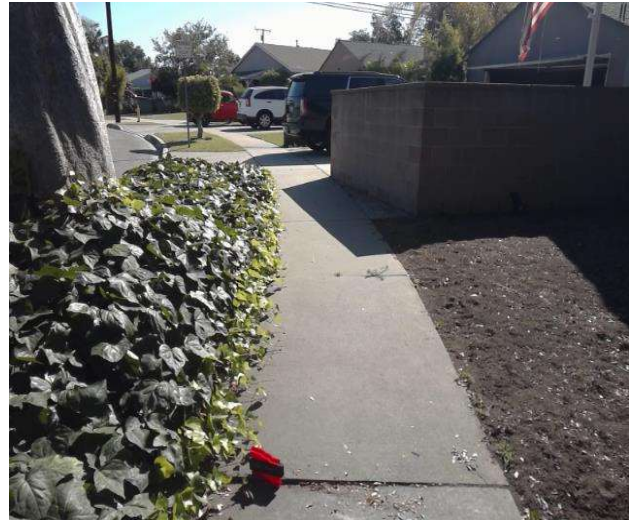
#### Recommendation

Ensure that the change in elevation is within the recommended value.

Recommendation Up to 0.25 inches

#### Costing Info (Estimated)

Remove tripping hazards \$198



**Code Reference** ADA 206, 302

#### Progress

---

<b>Record Number</b>	449679	<b>Resolution</b>	None
<b>Progress</b>	Not_Started	<b>Priority</b>	Two
<b>Actual Date</b>		<b>Projected Date</b>	06/30/2021
<b>Actual Cost</b>	\$0.00	<b>Contractor</b>	
<b>Comments</b>	No Comments	<b>New Value</b>	0
<b>Assignment</b>	None		
<b>Designated Staff</b>			

## Hasty Avenue - Cedartree Road to Brookpark Road

### Sidewalks - Exterior : Sidewalks , Change in Level

---

#### East Side

#### Change in Level South of Cedartree Road @ 33.950796018482, -118.101997375488

Sidewalks , Change in Level : Change in Level Non Beveled

#### Finding

There is a change in elevation greater than recommended value.

**On-Site Finding** 0.75 inches

#### Recommendation

Ensure that the change in elevation is within the recommended value.

Recommendation Up to 0.25 inches

#### Costing Info (Estimated)

Remove tripping hazards \$198



**Code Reference** ADA 206, 302

#### Progress

---

<b>Record Number</b>	449680	<b>Resolution</b>	None
<b>Progress</b>	Not_Started	<b>Priority</b>	Two
<b>Actual Date</b>		<b>Projected Date</b>	06/30/2021
<b>Actual Cost</b>	\$0.00	<b>Contractor</b>	
<b>Comments</b>	No Comments	<b>New Value</b>	0
<b>Assignment</b>	None		
<b>Designated Staff</b>			

## Hasty Avenue - Cedartree Road to Brookpark Road

### Sidewalks - Exterior : Sidewalks , Change in Level

---

#### East Side

#### Change in Level South of Cedartree Road @ 33.951225430680, -118.101684898138

Sidewalks , Change in Level : Change in Level Non Beveled

#### Finding

There is a change in elevation greater than recommended value.

**On-Site Finding** 0.50 inches

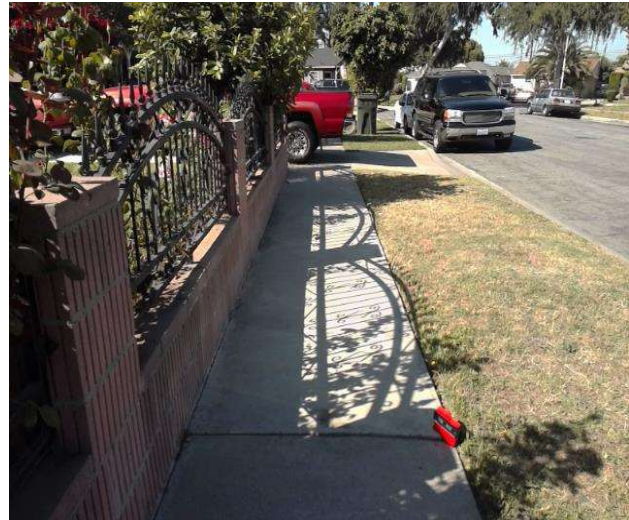
#### Recommendation

Ensure that the change in elevation is within the recommended value.

Recommendation Up to 0.25 inches

#### Costing Info (Estimated)

Remove tripping hazards \$198



**Code Reference** ADA 206, 302

#### Progress

---

<b>Record Number</b>	449678	<b>Resolution</b>	None
<b>Progress</b>	Not_Started	<b>Priority</b>	Two
<b>Actual Date</b>		<b>Projected Date</b>	06/30/2021
<b>Actual Cost</b>	\$0.00	<b>Contractor</b>	
<b>Comments</b>	No Comments		
<b>Assignment</b>	None	<b>New Value</b>	0
<b>Designated Staff</b>			



## Hasty Avenue - Cedartree Road to Brookpark Road

### Sidewalks - Exterior : Sidewalks , Change in Level

---

#### East Side

#### Change in Level South of Cedartree Road @ 33.952462481685, -118.101070672274

Sidewalks , Change in Level : Change in Level Non Beveled

#### Finding

There is a change in elevation greater than recommended value.

**On-Site Finding** 0.75 inches

#### Recommendation

Ensure that the change in elevation is within the recommended value.

Recommendation Up to 0.25 inches

#### Costing Info (Estimated)

Remove tripping hazards \$198



**Code Reference** ADA 206, 302

#### Progress

---

<b>Record Number</b>	449681	<b>Resolution</b>	None
<b>Progress</b>	Not_Started	<b>Priority</b>	Two
<b>Actual Date</b>		<b>Projected Date</b>	06/30/2021
<b>Actual Cost</b>	\$0.00	<b>Contractor</b>	
<b>Comments</b>	No Comments	<b>New Value</b>	0
<b>Assignment</b>	None		
<b>Designated Staff</b>			

## Hasty Avenue - Cedartree Road to Brookpark Road

### Sidewalks - Exterior : Sidewalks , Change in Level

---

#### West Side

#### Change in Level North of Brookpark Road @ 33.950945089284, -118.102068454027

Sidewalks , Change in Level : Change in Level Non Beveled

#### Finding

There is a change in elevation greater than recommended value.

**On-Site Finding** 0.87 inches

#### Recommendation

Ensure that the change in elevation is within the recommended value.

Recommendation Up to 0.25 inches

#### Costing Info (Estimated)

Remove tripping hazards \$198



**Code Reference** ADA 206, 302

#### Progress

---

<b>Record Number</b>	449668	<b>Resolution</b>	None
<b>Progress</b>	Not_Started	<b>Priority</b>	Two
<b>Actual Date</b>		<b>Projected Date</b>	06/30/2021
<b>Actual Cost</b>	\$0.00	<b>Contractor</b>	
<b>Comments</b>	No Comments	<b>New Value</b>	0
<b>Assignment</b>	None		
<b>Designated Staff</b>			

## Hasty Avenue - Cedartree Road to Brookpark Road

### Curb Ramps - Exterior : Curb Ramp

#### Northeast Corner of Brookpark Road @ 33.950738170042, - 118.102046996355

Curb Ramp : No Detectable Warnings

#### Finding

The curb ramp does not provide a detectable warning surface which includes truncated domes.

**On-Site Finding** Not Found

#### Recommendation

Provide compliant detectable warnings to surface.

Recommendation See Recommendation

#### Costing Info (Estimated)

Provide detectable warning to surface \$248



**Code Reference** CA 11B-406.5.12

### Progress

<b>Record Number</b>	449669	<b>Resolution</b>	None
<b>Progress</b>	Not_Started	<b>Priority</b>	Five
<b>Actual Date</b>		<b>Projected Date</b>	06/30/2025
<b>Actual Cost</b>	\$0.00	<b>Contractor</b>	
<b>Comments</b>	No Comments	<b>New Value</b>	0
<b>Assignment</b>	None		
<b>Designated Staff</b>			

## Hasty Avenue - Cedartree Road to Brookpark Road

### Curb Ramps - Exterior : Curb Ramp

#### Northeast Corner of Brookpark Road @ 33.950738170042, - 118.102046996355

Curb Ramp : Curb Ramp Slope

#### Finding

The running slope is greater than allowed.

**On-Site Finding** 12.30 percent

#### Recommendation

Provide a compliant curb ramp.

Recommendation Up to 8.33 percent

#### Costing Info (Estimated)

Install curb ramp \$1,300



**Code Reference** ADA 406, 406.1, 405.2, CA 11B-406

### Progress

<b>Record Number</b>	449670	<b>Resolution</b>	None
<b>Progress</b>	Not_Started	<b>Priority</b>	Five
<b>Actual Date</b>		<b>Projected Date</b>	06/30/2025
<b>Actual Cost</b>	\$0.00	<b>Contractor</b>	
<b>Comments</b>	No Comments		
<b>Assignment</b>	None	<b>New Value</b>	0
<b>Designated Staff</b>			



## Hasty Avenue - Cedartree Road to Brookpark Road

### Curb Ramps - Exterior : Curb Ramp

---

#### Northeast Corner of Brookpark Road @ 33.950738170042, - 118.102046996355

Curb Ramp : Curb Ramp - Cross Slope

#### Finding

The cross slope is greater than allowed.

**On-Site Finding** 4.00 percent

#### Recommendation

Provide a compliant curb ramp.

Recommendation Up to 2.08 percent

#### Costing Info (Estimated)

Install curb ramp \$1,300



**Code Reference** ADA 402, 406.1, 405.3, CA 11B-406.5.7

### Progress

---

<b>Record Number</b>	449671	<b>Resolution</b>	None
<b>Progress</b>	Not_Started	<b>Priority</b>	Five
<b>Actual Date</b>		<b>Projected Date</b>	06/30/2025
<b>Actual Cost</b>	\$0.00	<b>Contractor</b>	
<b>Comments</b>	No Comments		
<b>Assignment</b>	None	<b>New Value</b>	0
<b>Designated Staff</b>			

## Hasty Avenue - Cedartree Road to Brookpark Road

### Curb Ramps - Exterior : Curb Ramp

#### Northeast Corner of Brookpark Road @ 33.950738170042, - 118.102046996355

Curb Ramp : Side Flare Slope

#### Finding

The slope of the curb ramp side flare is greater than allowed.

**On-Site Finding** 14.30 percent

#### Recommendation

Provide curb ramp side flares with a compliant slope.

Recommendation Up to 10.00 percent

#### Costing Info (Estimated)

Install flared sides \$1,300



**Code Reference** ADA 406, 406.3, CA 11B-406.2.2

#### Progress

<b>Record Number</b>	449672	<b>Resolution</b>	None
<b>Progress</b>	Not_Started	<b>Priority</b>	Five
<b>Actual Date</b>		<b>Projected Date</b>	06/30/2025
<b>Actual Cost</b>	\$0.00	<b>Contractor</b>	
<b>Comments</b>	No Comments	<b>New Value</b>	0
<b>Assignment</b>	None		
<b>Designated Staff</b>			

## Hasty Avenue - Cedartree Road to Brookpark Road

### Curb Ramps - Exterior : Curb Ramp , Landings And Transitions

---

#### Northeast Corner of Brookpark Road @ 33.950738170042, - 118.102046996355

##### Bottom Landing

##### Finding

The transition from the bottom of the curb ramp to the walk, gutter, or street is abrupt.

**On-Site Finding** 0.87 inches

##### Recommendation

Patch the transition area at the bottom of the curb ramp so that the transition is flush and free of abrupt changes.

Recommendation Up to 0.50 inches

##### Costing Info (Estimated)

Patch lip at curb ramp \$255

Curb Ramp , Landings And Transitions : Bottom Landing Change in Level



**Code Reference** ADA 302, 303, 406.2, 303.1

### Progress

---

<b>Record Number</b>	449673	<b>Resolution</b>	None
<b>Progress</b>	Not_Started	<b>Priority</b>	Five
<b>Actual Date</b>		<b>Projected Date</b>	06/30/2025
<b>Actual Cost</b>	\$0.00	<b>Contractor</b>	
<b>Comments</b>	No Comments		
<b>Assignment</b>	None	<b>New Value</b>	0
<b>Designated Staff</b>			

## Hasty Avenue - Cedartree Road to Brookpark Road

### Curb Ramps - Exterior : Curb Ramp , Landings and Transitions

---

#### Northeast Corner of Brookpark Road @ 33.950738170042, - 118.102046996355

##### Top Landing

Curb Ramp , Landings and Transitions : Top Landing Clear Length - Landings

##### Finding

There is not enough top landing clear length.

**On-Site Finding** 46.50 inches

##### Recommendation

Provide a level top landing with enough clear length.

Recommendation At least 48.00 inches

##### Costing Info (Estimated)

Provide compliant landing \$240



**Code Reference** ADA 406, 406.4,CA 11B-406.5.3

### Progress

---

<b>Record Number</b>	449674	<b>Resolution</b>	None
<b>Progress</b>	Not_Started	<b>Priority</b>	Five
<b>Actual Date</b>		<b>Projected Date</b>	06/30/2025
<b>Actual Cost</b>	\$0.00	<b>Contractor</b>	
<b>Comments</b>	No Comments		
<b>Assignment</b>	None	<b>New Value</b>	0
<b>Designated Staff</b>			



## Hasty Avenue - Cedartree Road to Brookpark Road

### Sidewalks - Exterior : Sidewalks

---

#### East Side

#### Sidewalk South of Cedartree Road @ 33.952614886905, -118.100996911526

Sidewalks : Missing Sidewalk

#### Finding

Section of sidewalk is missing and consists of dirt, grass or gravel.

**On-Site Finding** 37.00 feet

#### Recommendation

Provide a compliant sidewalk for the missing section.

Recommendation See Recommendation

#### Costing Info (Estimated)

\$1,260



**Code Reference** ADA 206, 302,CA 11B-302,CA 11B-206

### Progress

---

<b>Record Number</b>	449677	<b>Resolution</b>	None
<b>Progress</b>	Not_Started	<b>Priority</b>	Five
<b>Actual Date</b>		<b>Projected Date</b>	06/30/2025
<b>Actual Cost</b>	\$0.00	<b>Contractor</b>	
<b>Comments</b>	No Comments		
<b>Assignment</b>	None	<b>New Value</b>	0
<b>Designated Staff</b>			

## Hasty Avenue - Cedartree Road to Brookpark Road

### Sidewalks - Exterior : Sidewalks

---

#### East Side

#### Sidewalk South of Cedartree Road @ 33.952909684547, -118.100856095552

Sidewalks : Missing Sidewalk

#### Finding

Section of sidewalk is missing and consists of dirt, grass or gravel.

**On-Site Finding** 28.00 feet

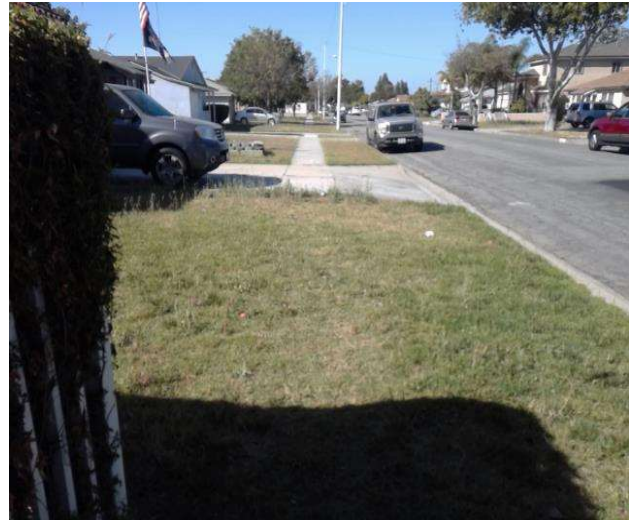
#### Recommendation

Provide a compliant sidewalk for the missing section.

Recommendation See Recommendation

#### Costing Info (Estimated)

\$1,260



**Code Reference** ADA 206, 302,CA 11B-302,CA 11B-206

### Progress

---

<b>Record Number</b>	449676	<b>Resolution</b>	None
<b>Progress</b>	Not_Started	<b>Priority</b>	Five
<b>Actual Date</b>		<b>Projected Date</b>	06/30/2025
<b>Actual Cost</b>	\$0.00	<b>Contractor</b>	
<b>Comments</b>	No Comments	<b>New Value</b>	0
<b>Assignment</b>	None		
<b>Designated Staff</b>			

**Hasty Avenue - Cedartree Road to Brookpark Road**

**Sidewalks - Exterior : Sidewalks**

**East Side @ 33.953042065043, -118.100778311491**

Sidewalks : 60X60 Turn Area

**Finding**

There is no 60X60 turn area at every 200 feet.

**On-Site Finding** Not Found

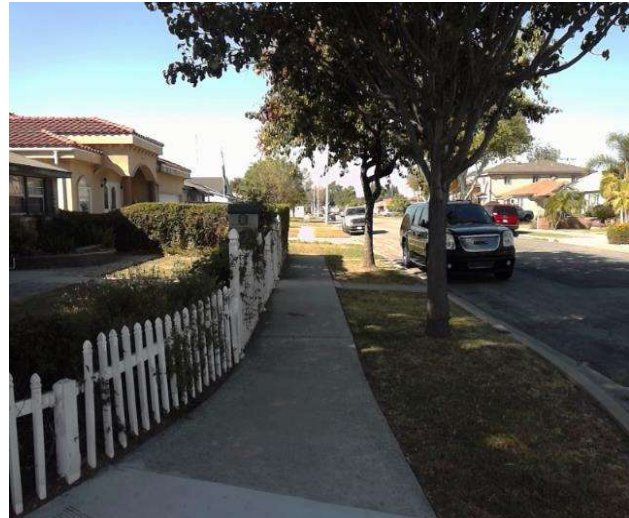
**Recommendation**

Provide a 60X60 turn every 200 feet on the sidewalk.

Recommendation See Recommendation

**Costing Info (Estimated)**

\$2,400



**Code Reference** ADA 206, 302

**Progress**

<b>Record Number</b>	449675	<b>Resolution</b>	None
<b>Progress</b>	Not_Started	<b>Priority</b>	Five
<b>Actual Date</b>		<b>Projected Date</b>	06/30/2025
<b>Actual Cost</b>	\$0.00	<b>Contractor</b>	
<b>Comments</b>	No Comments		
<b>Assignment</b>	None	<b>New Value</b>	0
<b>Designated Staff</b>			

## Hasty Avenue - Cedartree Road to Brookpark Road

### Sidewalks - Exterior : Sidewalks , Hazards & Gratings

---

#### West Side

#### Curb Northwest Corner of Brookpark Road @ 33.950892803286, -118.102165013552

Sidewalks , Hazards & Gratings : Curb is on Path of Travel

#### Finding

There is a curb on the designated path of travel.

**On-Site Finding** Not Compliant

#### Recommendation

Provide a compliant curb ramp.

Recommendation See Recommendation

#### Costing Info (Estimated)

Install curb ramp \$2,500



**Code Reference** ADA 402, 303, 406, 403.4, 303.4

#### Progress

---

<b>Record Number</b>	449667	<b>Resolution</b>	None
<b>Progress</b>	Not_Started	<b>Priority</b>	Five
<b>Actual Date</b>		<b>Projected Date</b>	06/30/2025
<b>Actual Cost</b>	\$0.00	<b>Contractor</b>	
<b>Comments</b>	No Comments	<b>New Value</b>	0
<b>Assignment</b>	None		
<b>Designated Staff</b>			



## Hasty Avenue - Cedartree Road to Brookpark Road

### Sidewalks - Exterior : Sidewalks

---

#### West Side

#### Sidewalk North of Brookpark Road @ 33.951247679957, -118.101869970560

Sidewalks : Missing Sidewalk

#### Finding

Section of sidewalk is missing and consists of dirt, grass or gravel.

**On-Site Finding** 100.00 feet

#### Recommendation

Provide a compliant sidewalk for the missing section.

Recommendation See Recommendation

#### Costing Info (Estimated)

\$1,260



**Code Reference** ADA 206, 302,CA 11B-302,CA 11B-206

### Progress

---

<b>Record Number</b>	449665	<b>Resolution</b>	None
<b>Progress</b>	Not_Started	<b>Priority</b>	Five
<b>Actual Date</b>		<b>Projected Date</b>	06/30/2025
<b>Actual Cost</b>	\$0.00	<b>Contractor</b>	
<b>Comments</b>	No Comments	<b>New Value</b>	0
<b>Assignment</b>	None		
<b>Designated Staff</b>			

## Hasty Avenue - Cedartree Road to Brookpark Road

### Sidewalks - Exterior : Sidewalks

---

#### West Side

#### Sidewalk North of Brookpark Road @ 33.952460256789, -118.101273179054

Sidewalks : Missing Sidewalk

#### Finding

Section of sidewalk is missing and consists of dirt, grass or gravel.

**On-Site Finding** 116.00 feet

#### Recommendation

Provide a compliant sidewalk for the missing section.

Recommendation See Recommendation

#### Costing Info (Estimated)

\$1,260



**Code Reference** ADA 206, 302,CA 11B-302,CA 11B-206

### Progress

---

<b>Record Number</b>	449666	<b>Resolution</b>	None
<b>Progress</b>	Not_Started	<b>Priority</b>	Five
<b>Actual Date</b>		<b>Projected Date</b>	06/30/2025
<b>Actual Cost</b>	\$0.00	<b>Contractor</b>	
<b>Comments</b>	No Comments	<b>New Value</b>	0
<b>Assignment</b>	None		
<b>Designated Staff</b>			

## Hasty Avenue - Cedartree Road to Brookpark Road

### Sidewalks - Exterior : Sidewalks

---

#### West Side @ 33.950892803286, -118.102165013552

Sidewalks : 60X60 Turn Area

#### Finding

There is no 60X60 turn area at every 200 feet.

**On-Site Finding** Not Found

#### Recommendation

Provide a 60X60 turn every 200 feet on the sidewalk.

Recommendation See Recommendation

#### Costing Info (Estimated)

\$2,400



**Code Reference** ADA 206, 302

### Progress

---

<b>Record Number</b>	449664	<b>Resolution</b>	None
<b>Progress</b>	Not_Started	<b>Priority</b>	Five
<b>Actual Date</b>		<b>Projected Date</b>	06/30/2025
<b>Actual Cost</b>	\$0.00	<b>Contractor</b>	
<b>Comments</b>	No Comments		
<b>Assignment</b>	None	<b>New Value</b>	0
<b>Designated Staff</b>			

**Hasty Avenue - Cedartree Road to Brookpark Road**



**Hasty Avenue - Cedartree Road to Brookpark Road**

**Cedartree Road to Brookpark Road  
Downey, CA 90242**

Date of Inspection  
6/15/2017

**\*Estimated Facility Total: \$17,973**

\*Estimated facility total is for estimating purposes only and does not represent total construction, repair totals or design fees.

Prepared By

**Disability Access Consultants**

(800) 743-7067

Prepared Using





# Accessibility Survey

---



## City of Downey

## Hasty Avenue - Cedartree Road to Telegraph Road

Cedartree Road to Telegraph Road  
Downey, CA 90242

Date of Inspection  
6/15/2017

Prepared By

**Disability Access Consultants**

(800) 743-7067

## Hasty Avenue - Cedartree Road to Telegraph Road

### Sidewalks - Exterior : Sidewalks , Change in Level

---

#### East Side

#### Change in Level South of Telegraph Road @ 33.953777384890, -118.100366592407

Sidewalks , Change in Level : Change in Level Non Beveled

#### Finding

There is a change in elevation greater than recommended value.

**On-Site Finding** 1.50 inches

#### Recommendation

Ensure that the change in elevation is within the recommended value.

Recommendation Up to 0.25 inches

#### Costing Info (Estimated)

Remove tripping hazards \$198



**Code Reference** ADA 206, 302

Notes : Continues For 5 Feet

#### Progress

---

<b>Record Number</b>	449748	<b>Resolution</b>	None
<b>Progress</b>	Not_Started	<b>Priority</b>	One
<b>Actual Date</b>		<b>Projected Date</b>	06/30/2018
<b>Actual Cost</b>	\$0.00	<b>Contractor</b>	
<b>Comments</b>	No Comments	<b>New Value</b>	0
<b>Assignment</b>	None		
<b>Designated Staff</b>			

## Hasty Avenue - Cedartree Road to Telegraph Road

### Sidewalks - Exterior : Sidewalks , Change in Level

---

#### East Side

#### Change in Level South of Telegraph Road @ 33.953777384890, -118.100366592407

Sidewalks , Change in Level : Change in Level Non Beveled

#### Finding

There is a change in elevation greater than recommended value.

**On-Site Finding** 4.75 inches

#### Recommendation

Ensure that the change in elevation is within the recommended value.

Recommendation Up to 0.25 inches

#### Costing Info (Estimated)

Remove tripping hazards \$198



**Code Reference** ADA 206, 302

Notes : Continues For 17 Feet

#### Progress

---

<b>Record Number</b>	449753	<b>Resolution</b>	None
<b>Progress</b>	Not_Started	<b>Priority</b>	One
<b>Actual Date</b>		<b>Projected Date</b>	06/30/2018
<b>Actual Cost</b>	\$0.00	<b>Contractor</b>	
<b>Comments</b>	No Comments		
<b>Assignment</b>	None	<b>New Value</b>	0
<b>Designated Staff</b>			

## Hasty Avenue - Cedartree Road to Telegraph Road

### Sidewalks - Exterior : Sidewalks , Change in Level

---

#### East Side

#### Change in Level South of Telegraph Road @ 33.953898639746, -118.100288808346

Sidewalks , Change in Level : Change in Level Non Beveled

#### Finding

There is a change in elevation greater than recommended value.

**On-Site Finding** 4.50 inches

#### Recommendation

Ensure that the change in elevation is within the recommended value.

Recommendation Up to 0.25 inches

#### Costing Info (Estimated)

Remove tripping hazards \$198



**Code Reference** ADA 206, 302

Notes : Continues For 15 Feet

#### Progress

---

<b>Record Number</b>	449751	<b>Resolution</b>	None
<b>Progress</b>	Not_Started	<b>Priority</b>	One
<b>Actual Date</b>		<b>Projected Date</b>	06/30/2018
<b>Actual Cost</b>	\$0.00	<b>Contractor</b>	
<b>Comments</b>	No Comments	<b>New Value</b>	0
<b>Assignment</b>	None		
<b>Designated Staff</b>			

## Hasty Avenue - Cedartree Road to Telegraph Road

### Sidewalks - Exterior : Sidewalks , Change in Level

---

#### East Side

#### Change in Level South of Telegraph Road @ 33.953690615254, -118.100408166647

Sidewalks , Change in Level : Change in Level Non Beveled

#### Finding

There is a change in elevation greater than recommended value.

**On-Site Finding** 1.00 inches

#### Recommendation

Ensure that the change in elevation is within the recommended value.

Recommendation Up to 0.25 inches

#### Costing Info (Estimated)

Remove tripping hazards \$198



**Code Reference** ADA 206, 302

Notes : Continues For 5 Feet

#### Progress

---

<b>Record Number</b>	449746	<b>Resolution</b>	None
<b>Progress</b>	Not_Started	<b>Priority</b>	Two
<b>Actual Date</b>		<b>Projected Date</b>	06/30/2021
<b>Actual Cost</b>	\$0.00	<b>Contractor</b>	
<b>Comments</b>	No Comments	<b>New Value</b>	0
<b>Assignment</b>	None		
<b>Designated Staff</b>			



## Hasty Avenue - Cedartree Road to Telegraph Road

### Sidewalks - Exterior : Sidewalks , Change in Level

---

#### East Side

#### Change in Level South of Telegraph Road @ 33.953750686550, -118.100378662348

Sidewalks , Change in Level : Change in Level Non Beveled

#### Finding

There is a change in elevation greater than recommended value.

**On-Site Finding** 0.62 inches

#### Recommendation

Ensure that the change in elevation is within the recommended value.

Recommendation Up to 0.25 inches

#### Costing Info (Estimated)

Remove tripping hazards \$198



**Code Reference** ADA 206, 302

#### Progress

---

<b>Record Number</b>	449747	<b>Resolution</b>	None
<b>Progress</b>	Not_Started	<b>Priority</b>	Two
<b>Actual Date</b>		<b>Projected Date</b>	06/30/2021
<b>Actual Cost</b>	\$0.00	<b>Contractor</b>	
<b>Comments</b>	No Comments	<b>New Value</b>	0
<b>Assignment</b>	None		
<b>Designated Staff</b>			

## Hasty Avenue - Cedartree Road to Telegraph Road

### Sidewalks - Exterior : Sidewalks , Change in Level

---

#### East Side

#### Change in Level South of Telegraph Road @ 33.953777384890, -118.100366592407

Sidewalks , Change in Level : Change in Level Non Beveled

#### Finding

There is a change in elevation greater than recommended value.

**On-Site Finding** 0.75 inches

#### Recommendation

Ensure that the change in elevation is within the recommended value.

Recommendation Up to 0.25 inches

#### Costing Info (Estimated)

Remove tripping hazards \$198



**Code Reference** ADA 206, 302

#### Progress

---

<b>Record Number</b>	449749	<b>Resolution</b>	None
<b>Progress</b>	Not_Started	<b>Priority</b>	Two
<b>Actual Date</b>		<b>Projected Date</b>	06/30/2021
<b>Actual Cost</b>	\$0.00	<b>Contractor</b>	
<b>Comments</b>	No Comments	<b>New Value</b>	0
<b>Assignment</b>	None		
<b>Designated Staff</b>			

## Hasty Avenue - Cedartree Road to Telegraph Road

### Sidewalks - Exterior : Sidewalks , Change in Level

---

#### East Side

#### Change in Level South of Telegraph Road @ 33.953857479860, -118.100322335958

Sidewalks , Change in Level : Change in Level Non Beveled

#### Finding

There is a change in elevation greater than recommended value.

**On-Site Finding** 0.87 inches

#### Recommendation

Ensure that the change in elevation is within the recommended value.

Recommendation Up to 0.25 inches

#### Costing Info (Estimated)

Remove tripping hazards \$198



**Code Reference** ADA 206, 302

Notes : Continues For 5 Feet

#### Progress

---

<b>Record Number</b>	449752	<b>Resolution</b>	None
<b>Progress</b>	Not_Started	<b>Priority</b>	Two
<b>Actual Date</b>		<b>Projected Date</b>	06/30/2021
<b>Actual Cost</b>	\$0.00	<b>Contractor</b>	
<b>Comments</b>	No Comments		
<b>Assignment</b>	None	<b>New Value</b>	0
<b>Designated Staff</b>			

## Hasty Avenue - Cedartree Road to Telegraph Road

### Sidewalks - Exterior : Sidewalks , Change in Level

---

#### East Side

#### Change in Level South of Telegraph Road @ 33.953898639746, -118.100288808346

Sidewalks , Change in Level : Change in Level Non Beveled

#### Finding

There is a change in elevation greater than recommended value.

**On-Site Finding** 0.50 inches

#### Recommendation

Ensure that the change in elevation is within the recommended value.

Recommendation Up to 0.25 inches

#### Costing Info (Estimated)

Remove tripping hazards \$198



**Code Reference** ADA 206, 302

#### Progress

---

<b>Record Number</b>	449750	<b>Resolution</b>	None
<b>Progress</b>	Not_Started	<b>Priority</b>	Two
<b>Actual Date</b>		<b>Projected Date</b>	06/30/2021
<b>Actual Cost</b>	\$0.00	<b>Contractor</b>	
<b>Comments</b>	No Comments	<b>New Value</b>	0
<b>Assignment</b>	None		
<b>Designated Staff</b>			

## Hasty Avenue - Cedartree Road to Telegraph Road

### Curb Ramps - Exterior : Curb Ramp

---

#### **Southeast Corner of Telegraph Road @ 33.953966497893, -118.100260645151**

Curb Ramp : No Detectable Warnings

#### **Finding**

The curb ramp does not provide a detectable warning surface which includes truncated domes.

**On-Site Finding** Not Found

#### **Recommendation**

Provide compliant detectable warnings to surface.

Recommendation See Recommendation

#### **Costing Info (Estimated)**

Provide detectable warning to surface \$248



**Code Reference** CA 11B-406.5.12

### **Progress**

---

<b>Record Number</b>	449733	<b>Resolution</b>	None
<b>Progress</b>	Not_Started	<b>Priority</b>	Five
<b>Actual Date</b>		<b>Projected Date</b>	06/30/2025
<b>Actual Cost</b>	\$0.00	<b>Contractor</b>	
<b>Comments</b>	No Comments	<b>New Value</b>	0
<b>Assignment</b>	None		
<b>Designated Staff</b>			



## Hasty Avenue - Cedartree Road to Telegraph Road

### Curb Ramps - Exterior : Curb Ramp

#### **Southeast Corner of Telegraph Road @ 33.953966497893, - 118.100260645151**

Curb Ramp : Curb Ramp Width

#### **Finding**

The width of the curb ramp is less than required.

**On-Site Finding** 45.00 inches

#### **Recommendation**

Provide a compliant curb ramp.

Recommendation At least 48.00 inches

#### **Costing Info (Estimated)**

Install curb ramp \$1,300



**Code Reference** ADA 406, 406.1, 405.5, CA 11B-406.5.2

### **Progress**

<b>Record Number</b>	449734	<b>Resolution</b>	None
<b>Progress</b>	Not_Started	<b>Priority</b>	Five
<b>Actual Date</b>		<b>Projected Date</b>	06/30/2025
<b>Actual Cost</b>	\$0.00	<b>Contractor</b>	
<b>Comments</b>	No Comments		
<b>Assignment</b>	None	<b>New Value</b>	0
<b>Designated Staff</b>			

## Hasty Avenue - Cedartree Road to Telegraph Road

### Curb Ramps - Exterior : Curb Ramp

#### **Southeast Corner of Telegraph Road @ 33.953966497893, -118.100260645151**

Curb Ramp : Curb Ramp Slope

#### **Finding**

The running slope is greater than allowed.

**On-Site Finding** 9.20 percent

#### **Recommendation**

Provide a compliant curb ramp.

Recommendation Up to 8.33 percent

#### **Costing Info (Estimated)**

Install curb ramp \$1,300



**Code Reference** ADA 406, 406.1, 405.2, CA 11B-406

#### **Progress**

<b>Record Number</b>	449735	<b>Resolution</b>	None
<b>Progress</b>	Not_Started	<b>Priority</b>	Five
<b>Actual Date</b>		<b>Projected Date</b>	06/30/2025
<b>Actual Cost</b>	\$0.00	<b>Contractor</b>	
<b>Comments</b>	No Comments		
<b>Assignment</b>	None	<b>New Value</b>	0
<b>Designated Staff</b>			

## Hasty Avenue - Cedartree Road to Telegraph Road

### Curb Ramps - Exterior : Curb Ramp

#### **Southeast Corner of Telegraph Road @ 33.953966497893, - 118.100260645151**

Curb Ramp : Side Flare Slope

#### **Finding**

The slope of the curb ramp side flare is greater than allowed.

**On-Site Finding** 10.60 percent

#### **Recommendation**

Provide curb ramp side flares with a compliant slope.

Recommendation Up to 10.00 percent

#### **Costing Info (Estimated)**

Install flared sides \$1,300



**Code Reference** ADA 406, 406.3, CA 11B-406.2.2

### **Progress**

<b>Record Number</b>	449736	<b>Resolution</b>	None
<b>Progress</b>	Not_Started	<b>Priority</b>	Five
<b>Actual Date</b>		<b>Projected Date</b>	06/30/2025
<b>Actual Cost</b>	\$0.00	<b>Contractor</b>	
<b>Comments</b>	No Comments		
<b>Assignment</b>	None	<b>New Value</b>	0
<b>Designated Staff</b>			

## Hasty Avenue - Cedartree Road to Telegraph Road

### Curb Ramps - Exterior : Curb Ramp

---

#### **Southeast Corner of Telegraph Road @ 33.953966497893, - 118.100260645151**

##### Bottom Landing

Curb Ramp : Bottom Landing Slope

##### Finding

The bottom landing of the curb ramp is on the street, and the slope of the bottom landing is not compliant.

**On-Site Finding** 7.50 percent

##### Recommendation

Ensure the bottom landing slope is compliant and provides a smooth transition.

Recommendation Up to 5.00 percent

##### Costing Info (Estimated)

Repave landing \$1,260



**Code Reference** ADA 406, 406.2, CA 11B-406.5.8

### Progress

---

<b>Record Number</b>	449737	<b>Resolution</b>	None
<b>Progress</b>	Not_Started	<b>Priority</b>	Five
<b>Actual Date</b>		<b>Projected Date</b>	06/30/2025
<b>Actual Cost</b>	\$0.00	<b>Contractor</b>	
<b>Comments</b>	No Comments	<b>New Value</b>	0
<b>Assignment</b>	None		
<b>Designated Staff</b>			

## Hasty Avenue - Cedartree Road to Telegraph Road

### Curb Ramps - Exterior : Curb Ramp

#### Southwest Corner of Telegraph Road @ 33.954105551303, - 118.100384026766

Curb Ramp : No Detectable Warnings

#### Finding

The curb ramp does not provide a detectable warning surface which includes truncated domes.

**On-Site Finding** Not Found

#### Recommendation

Provide compliant detectable warnings to surface.

Recommendation See Recommendation

#### Costing Info (Estimated)

Provide detectable warning to surface \$248



**Code Reference** CA 11B-406.5.12

### Progress

<b>Record Number</b>	449738	<b>Resolution</b>	None
<b>Progress</b>	Not_Started	<b>Priority</b>	Five
<b>Actual Date</b>		<b>Projected Date</b>	06/30/2025
<b>Actual Cost</b>	\$0.00	<b>Contractor</b>	
<b>Comments</b>	No Comments	<b>New Value</b>	0
<b>Assignment</b>	None		
<b>Designated Staff</b>			



## Hasty Avenue - Cedartree Road to Telegraph Road

### Curb Ramps - Exterior : Curb Ramp

#### Southwest Corner of Telegraph Road @ 33.954105551303, - 118.100384026766

Curb Ramp : Curb Ramp Width

#### Finding

The width of the curb ramp is less than required.

**On-Site Finding** 40.00 inches

#### Recommendation

Provide a compliant curb ramp.

Recommendation At least 48.00 inches

#### Costing Info (Estimated)

Install curb ramp \$1,300



**Code Reference** ADA 406, 406.1, 405.5, CA 11B-406.5.2

### Progress

<b>Record Number</b>	449739	<b>Resolution</b>	None
<b>Progress</b>	Not_Started	<b>Priority</b>	Five
<b>Actual Date</b>		<b>Projected Date</b>	06/30/2025
<b>Actual Cost</b>	\$0.00	<b>Contractor</b>	
<b>Comments</b>	No Comments		
<b>Assignment</b>	None	<b>New Value</b>	0
<b>Designated Staff</b>			

## Hasty Avenue - Cedartree Road to Telegraph Road

### Curb Ramps - Exterior : Curb Ramp

#### Southwest Corner of Telegraph Road @ 33.954105551303, - 118.100384026766

Curb Ramp : Curb Ramp Slope

#### Finding

The running slope is greater than allowed.

**On-Site Finding** 9.10 percent

#### Recommendation

Provide a compliant curb ramp.

Recommendation Up to 8.33 percent

#### Costing Info (Estimated)

Install curb ramp \$1,300



**Code Reference** ADA 406, 406.1, 405.2, CA 11B-406

### Progress

<b>Record Number</b>	449740	<b>Resolution</b>	None
<b>Progress</b>	Not_Started	<b>Priority</b>	Five
<b>Actual Date</b>		<b>Projected Date</b>	06/30/2025
<b>Actual Cost</b>	\$0.00	<b>Contractor</b>	
<b>Comments</b>	No Comments		
<b>Assignment</b>	None	<b>New Value</b>	0
<b>Designated Staff</b>			

## Hasty Avenue - Cedartree Road to Telegraph Road

### Curb Ramps - Exterior : Curb Ramp

#### Southwest Corner of Telegraph Road @ 33.954105551303, - 118.100384026766

Curb Ramp : Side Flare Slope

#### Finding

The slope of the curb ramp side flare is greater than allowed.

**On-Site Finding** 10.80 percent

#### Recommendation

Provide curb ramp side flares with a compliant slope.

Recommendation Up to 10.00 percent

#### Costing Info (Estimated)

Install flared sides \$1,300



**Code Reference** ADA 406, 406.3, CA 11B-406.2.2

### Progress

<b>Record Number</b>	449741	<b>Resolution</b>	None
<b>Progress</b>	Not_Started	<b>Priority</b>	Five
<b>Actual Date</b>		<b>Projected Date</b>	06/30/2025
<b>Actual Cost</b>	\$0.00	<b>Contractor</b>	
<b>Comments</b>	No Comments		
<b>Assignment</b>	None	<b>New Value</b>	0
<b>Designated Staff</b>			

## Hasty Avenue - Cedartree Road to Telegraph Road

### Curb Ramps - Exterior : Curb Ramp

---

#### Southwest Corner of Telegraph Road @ 33.954105551303, - 118.100384026766

##### Bottom Landing

Curb Ramp : Bottom Landing Slope

##### Finding

The bottom landing of the curb ramp is on the street, and the slope of the bottom landing is not compliant.

**On-Site Finding** 6.30 percent

##### Recommendation

Ensure the bottom landing slope is compliant and provides a smooth transition.

Recommendation Up to 5.00 percent

##### Costing Info (Estimated)

Repave landing \$1,260



**Code Reference** ADA 406, 406.2, CA 11B-406.5.8

### Progress

---

<b>Record Number</b>	449742	<b>Resolution</b>	None
<b>Progress</b>	Not_Started	<b>Priority</b>	Five
<b>Actual Date</b>		<b>Projected Date</b>	06/30/2025
<b>Actual Cost</b>	\$0.00	<b>Contractor</b>	
<b>Comments</b>	No Comments		
<b>Assignment</b>	None	<b>New Value</b>	0
<b>Designated Staff</b>			

## Hasty Avenue - Cedartree Road to Telegraph Road

### Curb Ramps - Exterior : Curb Ramp , Landings and Transitions

---

#### Southwest Corner of Telegraph Road @ 33.954105551303, - 118.100384026766

##### Top Landing

Curb Ramp , Landings and Transitions : Top Landing Slope

##### Finding

The slope at the top landing is greater than allowed.

**On-Site Finding** 3.20 percent

##### Recommendation

Provide a top landing surface that does not exceed the maximum slope and cross slope. Provide a sufficient maneuvering clearance that does not accumulate water.

Recommendation Up to 2.08 percent

##### Costing Info (Estimated)

Provide compliant landing \$1,260



**Code Reference** ADA 402, 406.4, 403.3, 406.1, CA 11B-406.5.3

### Progress

---

<b>Record Number</b>	449743	<b>Resolution</b>	None
<b>Progress</b>	Not_Started	<b>Priority</b>	Five
<b>Actual Date</b>		<b>Projected Date</b>	06/30/2025
<b>Actual Cost</b>	\$0.00	<b>Contractor</b>	
<b>Comments</b>	No Comments		
<b>Assignment</b>	None	<b>New Value</b>	0
<b>Designated Staff</b>			



## Hasty Avenue - Cedartree Road to Telegraph Road

### Sidewalks - Exterior : Sidewalks , Vehicular Traffic

---

#### East Side

#### Driveway South of Telegraph Road @ 33.953551561165, -118.100472539663

Sidewalks , Vehicular Traffic : Cross Walks and Detectable Warnings

#### Finding

There are no detectable warnings where the pedestrian route crosses vehicular traffic.

**On-Site Finding** Not Found

#### Recommendation

Provide detectable warnings.

Recommendation See Recommendation

#### Costing Info (Estimated)

Install compliant detectable warnings \$190



**Code Reference** ADA 705,CA 11B-705.1.2.5,CA 11B-247.1.2.5

#### Progress

---

<b>Record Number</b>	449754	<b>Resolution</b>	None
<b>Progress</b>	Not_Started	<b>Priority</b>	Five
<b>Actual Date</b>		<b>Projected Date</b>	06/30/2025
<b>Actual Cost</b>	\$0.00	<b>Contractor</b>	
<b>Comments</b>	No Comments	<b>New Value</b>	0
<b>Assignment</b>	None		
<b>Designated Staff</b>			

## Hasty Avenue - Cedartree Road to Telegraph Road

### Sidewalks - Exterior : Sidewalks

---

#### East Side

#### Driveway South of Telegraph Road @ 33.953551561165, -118.100472539663

Sidewalks : Vehicular Traffic Cross Slope

#### Finding

Cross slope at vehicular traffic is not compliant.

**On-Site Finding** 9.70 percent

#### Recommendation

Repave the surface to provide a compliant cross slope.

Recommendation Up to 2.08 percent

#### Costing Info (Estimated)

Repave surface \$1,092



**Code Reference** ADA 206, 302, CA 11B-403.3

### Progress

---

<b>Record Number</b>	449755	<b>Resolution</b>	None
<b>Progress</b>	Not_Started	<b>Priority</b>	Five
<b>Actual Date</b>		<b>Projected Date</b>	06/30/2025
<b>Actual Cost</b>	\$0.00	<b>Contractor</b>	
<b>Comments</b>	No Comments	<b>New Value</b>	0
<b>Assignment</b>	None		
<b>Designated Staff</b>			

## Hasty Avenue - Cedartree Road to Telegraph Road

### Sidewalks - Exterior : Sidewalks

---

#### East Side

#### Sidewalk South of Telegraph Road @ 33.953535987093, -118.100484609604

Sidewalks : Missing Sidewalk

#### Finding

Section of sidewalk is missing and consists of dirt, grass or gravel.

**On-Site Finding** 146.00 feet

#### Recommendation

Provide a compliant sidewalk for the missing section.

Recommendation See Recommendation

#### Costing Info (Estimated)

\$1,260



**Code Reference** ADA 206, 302,CA 11B-302,CA 11B-206

### Progress

---

<b>Record Number</b>	449745	<b>Resolution</b>	None
<b>Progress</b>	Not_Started	<b>Priority</b>	Five
<b>Actual Date</b>		<b>Projected Date</b>	06/30/2025
<b>Actual Cost</b>	\$0.00	<b>Contractor</b>	
<b>Comments</b>	No Comments	<b>New Value</b>	0
<b>Assignment</b>	None		
<b>Designated Staff</b>			

**Hasty Avenue - Cedartree Road to Telegraph Road**

**Sidewalks - Exterior : Sidewalks**

**East Side @ 33.953966497893, -118.100260645151**

Sidewalks : 60X60 Turn Area

**Finding**

There is no 60X60 turn area at every 200 feet.

**On-Site Finding** Not Found

**Recommendation**

Provide a 60X60 turn every 200 feet on the sidewalk.

Recommendation See Recommendation

**Costing Info (Estimated)**

\$2,400



**Code Reference** ADA 206, 302

**Progress**

<b>Record Number</b>	449744	<b>Resolution</b>	None
<b>Progress</b>	Not_Started	<b>Priority</b>	Five
<b>Actual Date</b>		<b>Projected Date</b>	06/30/2025
<b>Actual Cost</b>	\$0.00	<b>Contractor</b>	
<b>Comments</b>	No Comments		
<b>Assignment</b>	None	<b>New Value</b>	0
<b>Designated Staff</b>			

## Hasty Avenue - Cedartree Road to Telegraph Road

### Sidewalks - Exterior : Sidewalks

---

#### West Side

#### Sidewalk North of Cedartree Road @ 33.953490377294, -118.100713938475

Sidewalks : Missing Sidewalk

#### Finding

Section of sidewalk is missing and consists of dirt, grass or gravel.

**On-Site Finding** 225.00 feet

#### Recommendation

Provide a compliant sidewalk for the missing section.

Recommendation See Recommendation

#### Costing Info (Estimated)

\$1,260



**Code Reference** ADA 206, 302,CA 11B-302,CA 11B-206

### Progress

---

<b>Record Number</b>	449756	<b>Resolution</b>	None
<b>Progress</b>	Not_Started	<b>Priority</b>	Five
<b>Actual Date</b>		<b>Projected Date</b>	06/30/2025
<b>Actual Cost</b>	\$0.00	<b>Contractor</b>	
<b>Comments</b>	No Comments		
<b>Assignment</b>	None	<b>New Value</b>	0
<b>Designated Staff</b>			



## Hasty Avenue - Cedartree Road to Telegraph Road



## Hasty Avenue - Cedartree Road to Telegraph Road

Cedartree Road to Telegraph Road  
Downey, CA 90242

Date of Inspection  
6/15/2017

\*Estimated Facility Total: \$19,862

\*Estimated facility total is for estimating purposes only and does not represent total construction, repair totals or design fees.

Prepared By

**Disability Access Consultants**

(800) 743-7067

Prepared Using



# Accessibility Survey

---



## City of Downey Hasty Avenue - Gotham Street to Baysinger Street

Gotham Street to Baysinger Street  
Downey, CA 90242

Date of Inspection  
6/13/2017

Prepared By

**Disability Access Consultants**

(800) 743-7067

**Hasty Avenue - Gotham Street to Baysinger Street**

**Sidewalks - Exterior : Sidewalks**

**East Side @ 33.938357699125, -118.110754787922**

Sidewalks : No Sidewalk

**Finding**

No sidewalk exists at the location.

**On-Site Finding** Not Found

**Recommendation**

No action necessary until a sidewalk is provided.

Recommendation See Recommendation

**Costing Info (Estimated)**

Unassigned



**Code Reference** ADA 206

**Progress**

<b>Record Number</b>	446591	<b>Resolution</b>	None
<b>Progress</b>	Not_Started	<b>Priority</b>	Five
<b>Actual Date</b>		<b>Projected Date</b>	06/30/2025
<b>Actual Cost</b>	\$0.00	<b>Contractor</b>	
<b>Comments</b>	No Comments	<b>New Value</b>	0
<b>Assignment</b>	None		
<b>Designated Staff</b>			

## Hasty Avenue - Gotham Street to Baysinger Street

### Sidewalks - Exterior : Sidewalks

---

**West Side @ 33.938422231769, -118.110864758492**

Sidewalks : No Sidewalk

#### Finding

No sidewalk exists at the location.

**On-Site Finding** Not Found

#### Recommendation

No action necessary until a sidewalk is provided.

Recommendation See Recommendation

#### Costing Info (Estimated)

Unassigned



**Code Reference** ADA 206

### Progress

---

<b>Record Number</b>	446592	<b>Resolution</b>	None
<b>Progress</b>	Not_Started	<b>Priority</b>	Five
<b>Actual Date</b>		<b>Projected Date</b>	06/30/2025
<b>Actual Cost</b>	\$0.00	<b>Contractor</b>	
<b>Comments</b>	No Comments		
<b>Assignment</b>	None	<b>New Value</b>	0
<b>Designated Staff</b>			

**Hasty Avenue - Gotham Street to Baysinger Street**



**Hasty Avenue - Gotham Street to Baysinger Street**

**Gotham Street to Baysinger Street  
Downey, CA 90242**

Date of Inspection  
6/13/2017

**\*Estimated Facility Total: \$0**

\*Estimated facility total is for estimating purposes only and does not represent total construction, repair totals or design fees.

Prepared By

**Disability Access Consultants**

(800) 743-7067

Prepared Using





## Accessibility Survey

---



### City of Downey Hasty Avenue - Pellet Street to Cecilia Street

Pellet Street to Cecilia Street  
Downey, CA 90242

Date of Inspection  
6/13/2017

Prepared By  
**Disability Access Consultants**  
(800) 743-7067

## Hasty Avenue - Pellet Street to Cecilia Street

### Sidewalks - Exterior : Sidewalks

---

**East Side @ 33.932476122140, -118.114767372608**

Sidewalks : No Sidewalk

#### Finding

No sidewalk exists at the location.

**On-Site Finding** Not Found

#### Recommendation

No action necessary until a sidewalk is provided.

Recommendation See Recommendation

#### Costing Info (Estimated)

Unassigned



**Code Reference** ADA 206

### Progress

---

<b>Record Number</b>	446713	<b>Resolution</b>	None
<b>Progress</b>	Not_Started	<b>Priority</b>	Five
<b>Actual Date</b>		<b>Projected Date</b>	06/30/2025
<b>Actual Cost</b>	\$0.00	<b>Contractor</b>	
<b>Comments</b>	No Comments		
<b>Assignment</b>	None	<b>New Value</b>	0
<b>Designated Staff</b>			

## Hasty Avenue - Pellet Street to Cecilia Street

### Sidewalks - Exterior : Sidewalks

---

**West Side @ 33.932538433825, -118.114896118641**

Sidewalks : No Sidewalk

#### Finding

No sidewalk exists at the location.

**On-Site Finding** Not Found

#### Recommendation

No action necessary until a sidewalk is provided.

Recommendation See Recommendation

#### Costing Info (Estimated)

Unassigned



**Code Reference** ADA 206

### Progress

---

<b>Record Number</b>	446712	<b>Resolution</b>	None
<b>Progress</b>	Not_Started	<b>Priority</b>	Five
<b>Actual Date</b>		<b>Projected Date</b>	06/30/2025
<b>Actual Cost</b>	\$0.00	<b>Contractor</b>	
<b>Comments</b>	No Comments		
<b>Assignment</b>	None	<b>New Value</b>	0
<b>Designated Staff</b>			

**Hasty Avenue - Pellet Street to Cecilia Street**



**Hasty Avenue - Pellet Street to Cecilia Street**

**Pellet Street to Cecilia Street  
Downey, CA 90242**

Date of Inspection  
6/13/2017

**\*Estimated Facility Total: \$0**

\*Estimated facility total is for estimating purposes only and does not represent total construction, repair totals or design fees.

Prepared By

**Disability Access Consultants**

(800) 743-7067

Prepared Using

