

Accessibility Survey



City of Downey Heritage Circle - Stewart & Gray Road To Heritage Circle

Stewart & Gray Road To Heritage Circle
Downey, CA 90242

Date of Inspection
5/3/2017

Prepared By

Disability Access Consultants

(800) 743-7067

Heritage Circle - Stewart & Gray Road To Heritage Circle

Sidewalks - Exterior : Sidewalks , Change in Level

East Side

Change In Level South Of Stewart & Gray Road @ 33.940706433321, - 118.158138692379

Sidewalks , Change in Level : Change in Level Non Beveled

Finding

There is a change in elevation greater than recommended value.

On-Site Finding 0.62 inches

Recommendation

Ensure that the change in elevation is within the recommended value.

Recommendation Up to 0.25 inches

Costing Info (Estimated)

Remove tripping hazards \$198



Code Reference ADA 206, 302

Progress

Record Number	418933	Resolution	None
Progress	Not_Started	Priority	Two
Actual Date		Projected Date	06/30/2021
Actual Cost	\$0.00	Contractor	
Comments	No Comments		
Assignment	None	New Value	0
Designated Staff			

Heritage Circle - Stewart & Gray Road To Heritage Circle

Sidewalks - Exterior : Sidewalks , Change in Level

East Side

Change In Level South Of Stewart & Gray Road @ 33.940707545922, - 118.158145397902

Sidewalks , Change in Level : Change in Level Non Beveled

Finding

There is a change in elevation greater than recommended value.

On-Site Finding 1.00 inches

Recommendation

Ensure that the change in elevation is within the recommended value.

Recommendation Up to 0.25 inches

Costing Info (Estimated)

Remove tripping hazards \$198



Code Reference ADA 206, 302

Progress

Record Number	418932	Resolution	None
Progress	Not_Started	Priority	Two
Actual Date		Projected Date	06/30/2021
Actual Cost	\$0.00	Contractor	
Comments	No Comments		
Assignment	None	New Value	0
Designated Staff			

Heritage Circle - Stewart & Gray Road To Heritage Circle

Sidewalks - Exterior : Sidewalks , Change in Level

East Side

Change In Level South Of Stewart & Gray Road @ 33.940769851584, - 118.158504813910

Sidewalks , Change in Level : Change in Level Non Beveled

Finding

There is a change in elevation greater than recommended value.

On-Site Finding 0.62 inches

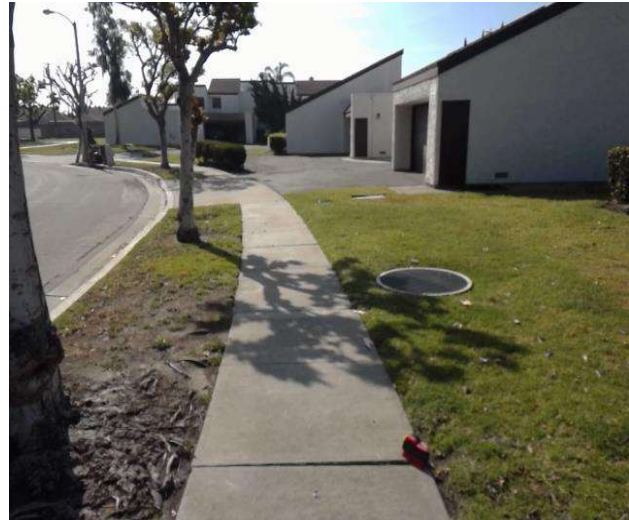
Recommendation

Ensure that the change in elevation is within the recommended value.

Recommendation Up to 0.25 inches

Costing Info (Estimated)

Remove tripping hazards \$198



Code Reference ADA 206, 302

Progress

Record Number	418934	Resolution	None
Progress	Not_Started	Priority	Two
Actual Date		Projected Date	06/30/2021
Actual Cost	\$0.00	Contractor	
Comments	No Comments		
Assignment	None	New Value	0
Designated Staff			

Heritage Circle - Stewart & Gray Road To Heritage Circle

Sidewalks - Exterior : Sidewalks , Change in Level

East Side

Change In Level South Of Stewart & Gray Road @ 33.940784315391, - 118.158526271582

Sidewalks , Change in Level : Change in Level Non Beveled

Finding

There is a change in elevation greater than recommended value.

On-Site Finding 0.62 inches

Recommendation

Ensure that the change in elevation is within the recommended value.

Recommendation Up to 0.25 inches

Costing Info (Estimated)

Remove tripping hazards \$198



Code Reference ADA 206, 302

Progress

Record Number	418930	Resolution	None
Progress	Not_Started	Priority	Two
Actual Date		Projected Date	06/30/2021
Actual Cost	\$0.00	Contractor	
Comments	No Comments	New Value	0
Assignment	None		
Designated Staff			

Heritage Circle - Stewart & Gray Road To Heritage Circle

Sidewalks - Exterior : Sidewalks , Change in Level

East Side

Change In Level South Of Stewart & Gray Road @ 33.940852183995, - 118.158655017614

Sidewalks , Change in Level : Change in Level Non Beveled

Finding

There is a change in elevation greater than recommended value.

On-Site Finding 0.62 inches

Recommendation

Ensure that the change in elevation is within the recommended value.

Recommendation Up to 0.25 inches

Costing Info (Estimated)

Remove tripping hazards \$198



Code Reference ADA 206, 302

Progress

Record Number	418931	Resolution	None
Progress	Not_Started	Priority	Two
Actual Date		Projected Date	06/30/2021
Actual Cost	\$0.00	Contractor	
Comments	No Comments		
Assignment	None	New Value	0
Designated Staff			

Heritage Circle - Stewart & Gray Road To Heritage Circle

Sidewalks - Exterior : Sidewalks , Change in Level

East Side

Change In Level South Of Stewart & Gray Road @ 33.940866647788, - 118.158669769764

Sidewalks , Change in Level : Change in Level Non Beveled

Finding

There is a change in elevation greater than recommended value.

On-Site Finding 1.25 inches

Recommendation

Ensure that the change in elevation is within the recommended value.

Recommendation Up to 0.25 inches

Costing Info (Estimated)

Remove tripping hazards \$198



Code Reference ADA 206, 302

Progress

Record Number	418929	Resolution	None
Progress	Not_Started	Priority	Two
Actual Date		Projected Date	06/30/2020
Actual Cost	\$0.00	Contractor	
Comments	No Comments		
Assignment	None	New Value	0
Designated Staff			

Heritage Circle - Stewart & Gray Road To Heritage Circle

Sidewalks - Exterior : Sidewalks , Change in Level

East Side

Change In Level South Of Stewart & Gray Road @ 33.941130333443, - 118.157676011324

Sidewalks , Change in Level : Change in Level Non Beveled

Finding

There is a change in elevation greater than recommended value.

On-Site Finding 0.50 inches

Recommendation

Ensure that the change in elevation is within the recommended value.

Recommendation Up to 0.25 inches

Costing Info (Estimated)

Remove tripping hazards \$198



Code Reference ADA 206, 302

Progress

Record Number	418935	Resolution	None
Progress	Not_Started	Priority	Two
Actual Date		Projected Date	06/30/2021
Actual Cost	\$0.00	Contractor	
Comments	No Comments		
Assignment	None	New Value	0
Designated Staff			

Heritage Circle - Stewart & Gray Road To Heritage Circle

Sidewalks - Exterior : Sidewalks , Change in Level

West Side

Change In Level South Of Heritage Circle @ 33.940833269799, -118.158296942711

Sidewalks , Change in Level : Change in Level Non Beveled

Finding

There is a change in elevation greater than recommended value.

On-Site Finding 0.50 inches

Recommendation

Ensure that the change in elevation is within the recommended value.

Recommendation Up to 0.25 inches

Costing Info (Estimated)

Remove tripping hazards \$198



Code Reference ADA 206, 302

Progress

Record Number	418911	Resolution	None
Progress	Not_Started	Priority	Two
Actual Date		Projected Date	06/30/2021
Actual Cost	\$0.00	Contractor	
Comments	No Comments	New Value	0
Assignment	None		
Designated Staff			

Heritage Circle - Stewart & Gray Road To Heritage Circle

Sidewalks - Exterior : Sidewalks , Change in Level

West Side

Change In Level South Of Heritage Circle @ 33.940868872987, -118.158368021250

Sidewalks , Change in Level : Change in Level Non Beveled

Finding

There is a change in elevation greater than recommended value.

On-Site Finding 1.12 inches

Recommendation

Ensure that the change in elevation is within the recommended value.

Recommendation Up to 0.25 inches

Costing Info (Estimated)

Remove tripping hazards \$198



Code Reference ADA 206, 302

Progress

Record Number	418910	Resolution	None
Progress	Not_Started	Priority	Two
Actual Date		Projected Date	06/30/2021
Actual Cost	\$0.00	Contractor	
Comments	No Comments	New Value	0
Assignment	None		
Designated Staff			

Heritage Circle - Stewart & Gray Road To Heritage Circle

Sidewalks - Exterior : Sidewalks , Change in Level

West Side

Change In Level South Of Heritage Circle @ 33.940878886381, -118.158408254385

Sidewalks , Change in Level : Change in Level Non Beveled

Finding

There is a change in elevation greater than recommended value.

On-Site Finding 0.75 inches

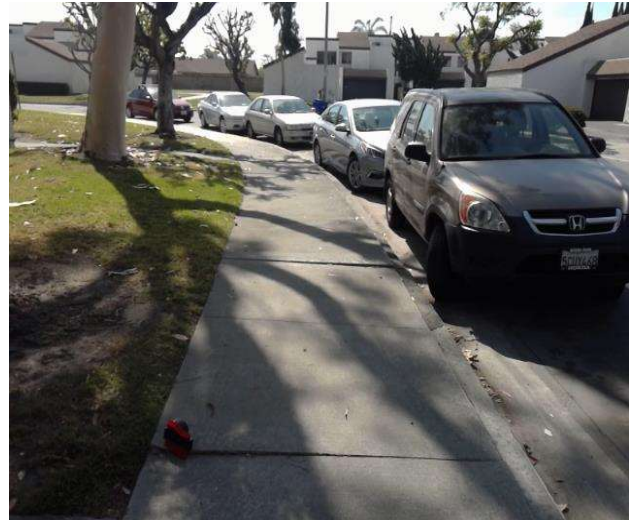
Recommendation

Ensure that the change in elevation is within the recommended value.

Recommendation Up to 0.25 inches

Costing Info (Estimated)

Remove tripping hazards \$198



Code Reference ADA 206, 302

Progress

Record Number	418920	Resolution	None
Progress	Not_Started	Priority	Two
Actual Date		Projected Date	06/30/2021
Actual Cost	\$0.00	Contractor	
Comments	No Comments	New Value	0
Assignment	None		
Designated Staff			

Heritage Circle - Stewart & Gray Road To Heritage Circle

Sidewalks - Exterior : Sidewalks , Change in Level

West Side

Change In Level South Of Heritage Circle @ 33.941005722602, -118.158632330

Sidewalks , Change in Level : Change in Level Non Beveled

Finding

There is a change in elevation greater than recommended value.

On-Site Finding 0.62 inches

Recommendation

Ensure that the change in elevation is within the recommended value.

Recommendation Up to 0.25 inches

Costing Info (Estimated)

Remove tripping hazards \$198



Code Reference ADA 206, 302

Progress

Record Number	418914	Resolution	None
Progress	Not_Started	Priority	Two
Actual Date		Projected Date	06/30/2021
Actual Cost	\$0.00	Contractor	
Comments	No Comments	New Value	0
Assignment	None		
Designated Staff			

Heritage Circle - Stewart & Gray Road To Heritage Circle

Sidewalks - Exterior : Sidewalks , Change in Level

West Side

Change In Level South Of Heritage Circle @ 33.941116982290, -118.157842308283

Sidewalks , Change in Level : Change in Level Non Beveled

Finding

There is a change in elevation greater than recommended value.

On-Site Finding 0.87 inches

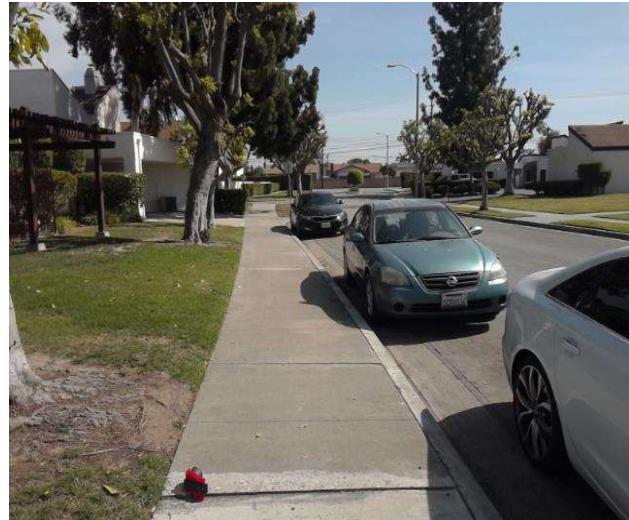
Recommendation

Ensure that the change in elevation is within the recommended value.

Recommendation Up to 0.25 inches

Costing Info (Estimated)

Remove tripping hazards \$198



Code Reference ADA 206, 302

Progress

Record Number	418915	Resolution	None
Progress	Not_Started	Priority	Two
Actual Date		Projected Date	06/30/2021
Actual Cost	\$0.00	Contractor	
Comments	No Comments	New Value	0
Assignment	None		
Designated Staff			

Heritage Circle - Stewart & Gray Road To Heritage Circle

Sidewalks - Exterior : Sidewalks , Change in Level

West Side

Change In Level South Of Heritage Circle @ 33.941326150109, -118.157749772072

Sidewalks , Change in Level : Change in Level Non Beveled

Finding

There is a change in elevation greater than recommended value.

On-Site Finding 1.25 inches

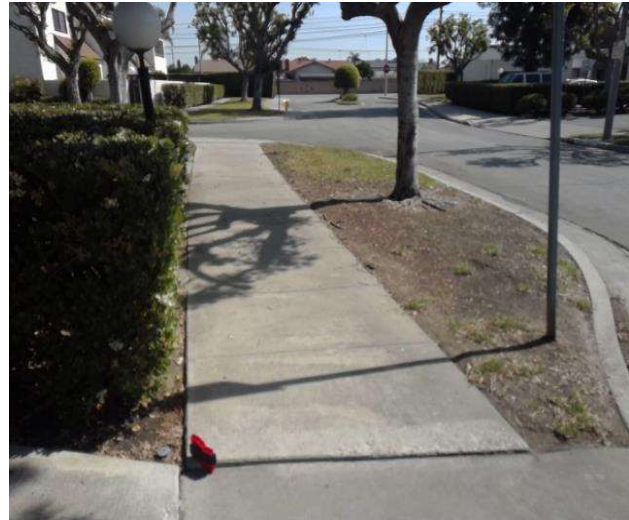
Recommendation

Ensure that the change in elevation is within the recommended value.

Recommendation Up to 0.25 inches

Costing Info (Estimated)

Remove tripping hazards \$198



Code Reference ADA 206, 302

Progress

Record Number	418917	Resolution	None
Progress	Not_Started	Priority	Two
Actual Date		Projected Date	06/30/2020
Actual Cost	\$0.00	Contractor	
Comments	No Comments		
Assignment	None	New Value	0
Designated Staff			

Heritage Circle - Stewart & Gray Road To Heritage Circle

Sidewalks - Exterior : Sidewalks , Change in Level

West Side

Change In Level South Of Heritage Circle @ 33.941380667169, -118.157701492310

Sidewalks , Change in Level : Change in Level Non Beveled

Finding

There is a change in elevation greater than recommended value.

On-Site Finding 0.75 inches

Recommendation

Ensure that the change in elevation is within the recommended value.

Recommendation Up to 0.25 inches

Costing Info (Estimated)

Remove tripping hazards \$198



Code Reference ADA 206, 302

Progress

Record Number	418913	Resolution	None
Progress	Not_Started	Priority	Two
Actual Date		Projected Date	06/30/2021
Actual Cost	\$0.00	Contractor	
Comments	No Comments	New Value	0
Assignment	None		
Designated Staff			

Heritage Circle - Stewart & Gray Road To Heritage Circle

Sidewalks - Exterior : Sidewalks , Change in Level

West Side

Change In Level South Of Heritage Circle @ 33.941409594574, -118.157685399055

Sidewalks , Change in Level : Change in Level Non Beveled

Finding

There is a change in elevation greater than recommended value.

On-Site Finding 1.00 inches

Recommendation

Ensure that the change in elevation is within the recommended value.

Recommendation Up to 0.25 inches

Costing Info (Estimated)

Remove tripping hazards \$198



Code Reference ADA 206, 302

Progress

Record Number	418918	Resolution	None
Progress	Not_Started	Priority	Two
Actual Date		Projected Date	06/30/2021
Actual Cost	\$0.00	Contractor	
Comments	No Comments	New Value	0
Assignment	None		
Designated Staff			

Heritage Circle - Stewart & Gray Road To Heritage Circle

Sidewalks - Exterior : Sidewalks , Change in Level

West Side

Change In Level South Of Stewart & Gray Road @ 33.941597622470, - 118.157564699650

Sidewalks , Change in Level : Change in Level Non Beveled

Finding

There is a change in elevation greater than recommended value.

On-Site Finding 0.50 inches

Recommendation

Ensure that the change in elevation is within the recommended value.

Recommendation Up to 0.25 inches

Costing Info (Estimated)

Remove tripping hazards \$198



Code Reference ADA 206, 302

Progress

Record Number	418919	Resolution	None
Progress	Not_Started	Priority	Two
Actual Date		Projected Date	06/30/2021
Actual Cost	\$0.00	Contractor	
Comments	No Comments		
Assignment	None	New Value	0
Designated Staff			

Heritage Circle - Stewart & Gray Road To Heritage Circle

Curb Ramps - Exterior : Curb Ramp

Southeast Corner Of Stewart & Gray Road @ 33.941724457620, - 118.157276362181

Curb Ramp : No Detectable Warnings

Finding

The curb ramp does not provide a detectable warning surface which includes truncated domes.

On-Site Finding Not Found

Recommendation

Provide compliant detectable warnings to surface.

Recommendation See Recommendation

Costing Info (Estimated)

Provide detectable warning to surface \$248



Code Reference CA 11B-406.5.12

Progress

Record Number	418952	Resolution	None
Progress	Not_Started	Priority	Seven
Actual Date		Projected Date	06/30/2032
Actual Cost	\$0.00	Contractor	
Comments	No Comments	New Value	0
Assignment	None		
Designated Staff			

Heritage Circle - Stewart & Gray Road To Heritage Circle

Curb Ramps - Exterior : Curb Ramp

Southeast Corner Of Stewart & Gray Road @ 33.941724457620, -118.157276362181

Curb Ramp : Curb Ramp Slope

Finding

The running slope is greater than allowed.

On-Site Finding 12.90 percent

Recommendation

Provide a compliant curb ramp.

Recommendation Up to 8.33 percent

Costing Info (Estimated)

Install curb ramp \$1,300



Code Reference ADA 406, 406.1, 405.2, CA 11B-406

Progress

Record Number	418953	Resolution	None
Progress	Not_Started	Priority	Seven
Actual Date		Projected Date	06/30/2032
Actual Cost	\$0.00	Contractor	
Comments	No Comments	New Value	0
Assignment	None		
Designated Staff			

Heritage Circle - Stewart & Gray Road To Heritage Circle

Curb Ramps - Exterior : Curb Ramp

Southeast Corner Of Stewart & Gray Road @ 33.941724457620, - 118.157276362181

Curb Ramp : Curb Ramp - Cross Slope

Finding

The cross slope is greater than allowed.

On-Site Finding 2.60 percent

Recommendation

Provide a compliant curb ramp.

Recommendation Up to 2.08 percent

Costing Info (Estimated)

Install curb ramp \$1,300



Code Reference ADA 402, 406.1, 405.3, CA 11B-406.5.7

Progress

Record Number	418954	Resolution	None
Progress	Not_Started	Priority	Seven
Actual Date		Projected Date	06/30/2032
Actual Cost	\$0.00	Contractor	
Comments	No Comments		
Assignment	None	New Value	0
Designated Staff			

Heritage Circle - Stewart & Gray Road To Heritage Circle

Curb Ramps - Exterior : Curb Ramp

Southeast Corner Of Stewart & Gray Road @ 33.941724457620, - 118.157276362181

Curb Ramp : Side Flare Slope

Finding

The slope of the curb ramp side flare is greater than allowed.

On-Site Finding 13.20 percent

Recommendation

Provide curb ramp side flares with a compliant slope.

Recommendation Up to 10.00 percent

Costing Info (Estimated)

Install flared sides \$1,300



Code Reference ADA 406, 406.3, CA 11B-406.2.2

Progress

Record Number	418955	Resolution	None
Progress	Not_Started	Priority	Seven
Actual Date		Projected Date	06/30/2032
Actual Cost	\$0.00	Contractor	
Comments	No Comments	New Value	0
Assignment	None		
Designated Staff			

Heritage Circle - Stewart & Gray Road To Heritage Circle

Curb Ramps - Exterior : Curb Ramp

Southeast Corner Of Stewart & Gray Road @ 33.941724457620, - 118.157276362181

Bottom Landing

Curb Ramp : Bottom Landing Slope

Finding

The bottom landing of the curb ramp is on the street, and the slope of the bottom landing is not compliant.

On-Site Finding 10.10 percent

Recommendation

Ensure the bottom landing slope is compliant and provides a smooth transition.

Recommendation Up to 5.00 percent

Costing Info (Estimated)

Repave landing \$1,260



Code Reference ADA 406, 406.2, CA 11B-406.5.8

Progress

Record Number	418956	Resolution	None
Progress	Not_Started	Priority	Seven
Actual Date		Projected Date	06/30/2032
Actual Cost	\$0.00	Contractor	
Comments	No Comments	New Value	0
Assignment	None		
Designated Staff			

Heritage Circle - Stewart & Gray Road To Heritage Circle

Curb Ramps - Exterior : Curb Ramp , Landings And Transitions

Southeast Corner Of Stewart & Gray Road @ 33.941724457620, - 118.157276362181

Bottom Landing

Curb Ramp , Landings And Transitions : Bottom Landing Change in Level

Finding

The transition from the bottom of the curb ramp to the walk, gutter, or street is abrupt.

On-Site Finding 0.75 inches

Recommendation

Patch the transition area at the bottom of the curb ramp so that the transition is flush and free of abrupt changes.

Recommendation Up to 0.50 inches

Costing Info (Estimated)

Patch lip at curb ramp \$255



Code Reference ADA 302, 303, 406.2, 303.1

Progress

Record Number	418957	Resolution	None
Progress	Not_Started	Priority	Seven
Actual Date		Projected Date	06/30/2032
Actual Cost	\$0.00	Contractor	
Comments	No Comments		
Assignment	None	New Value	0
Designated Staff			

Heritage Circle - Stewart & Gray Road To Heritage Circle

Curb Ramps - Exterior : Curb Ramp , Landings and Transitions

Southeast Corner Of Stewart & Gray Road @ 33.941724457620, - 118.157276362181

Top Landing

Curb Ramp , Landings and Transitions : Top Landing Clear Length - Landings

Finding

There is not enough top landing clear length.

On-Site Finding 0.12 inches

Recommendation

Provide a level top landing with enough clear length.

Recommendation At least 48.00 inches

Costing Info (Estimated)

Provide compliant landing \$240



Code Reference ADA 406, 406.4,CA 11B-406.5.3

Progress

Record Number	418958	Resolution	None
Progress	Not_Started	Priority	Seven
Actual Date		Projected Date	06/30/2032
Actual Cost	\$0.00	Contractor	
Comments	No Comments	New Value	0
Assignment	None		
Designated Staff			

Heritage Circle - Stewart & Gray Road To Heritage Circle

Curb Ramps - Exterior : Curb Ramp

Southwest Corner Of Stewart & Gray Road @ 33.941815689805, - 118.157410472631

Curb Ramp : No Detectable Warnings

Finding

The curb ramp does not provide a detectable warning surface which includes truncated domes.

On-Site Finding Not Found

Recommendation

Provide compliant detectable warnings to surface.

Recommendation See Recommendation

Costing Info (Estimated)

Provide detectable warning to surface \$248



Code Reference CA 11B-406.5.12

Progress

Record Number	418946	Resolution	None
Progress	Not_Started	Priority	Seven
Actual Date		Projected Date	06/30/2032
Actual Cost	\$0.00	Contractor	
Comments	No Comments	New Value	0
Assignment	None		
Designated Staff			

Heritage Circle - Stewart & Gray Road To Heritage Circle

Curb Ramps - Exterior : Curb Ramp

Southwest Corner Of Stewart & Gray Road @ 33.941815689805, - 118.157410472631

Curb Ramp : Curb Ramp Slope

Finding

The running slope is greater than allowed.

On-Site Finding 15.10 percent

Recommendation

Provide a compliant curb ramp.

Recommendation Up to 8.33 percent

Costing Info (Estimated)

Install curb ramp \$1,300



Code Reference ADA 406, 406.1, 405.2, CA 11B-406

Progress

Record Number	418947	Resolution	None
Progress	Not_Started	Priority	Seven
Actual Date		Projected Date	06/30/2032
Actual Cost	\$0.00	Contractor	
Comments	No Comments	New Value	0
Assignment	None		
Designated Staff			

Heritage Circle - Stewart & Gray Road To Heritage Circle

Curb Ramps - Exterior : Curb Ramp

Southwest Corner Of Stewart & Gray Road @ 33.941815689805, - 118.157410472631

Curb Ramp : Side Flare Slope

Finding

The slope of the curb ramp side flare is greater than allowed.

On-Site Finding 14.80 percent

Recommendation

Provide curb ramp side flares with a compliant slope.

Recommendation Up to 10.00 percent

Costing Info (Estimated)

Install flared sides \$1,300



Code Reference ADA 406, 406.3, CA 11B-406.2.2

Progress

Record Number	418948	Resolution	None
Progress	Not_Started	Priority	Seven
Actual Date		Projected Date	06/30/2032
Actual Cost	\$0.00	Contractor	
Comments	No Comments		
Assignment	None	New Value	0
Designated Staff			

Heritage Circle - Stewart & Gray Road To Heritage Circle

Curb Ramps - Exterior : Curb Ramp

Southwest Corner Of Stewart & Gray Road @ 33.941815689805, - 118.157410472631

Bottom Landing

Curb Ramp : Bottom Landing Slope

Finding

The bottom landing of the curb ramp is on the street, and the slope of the bottom landing is not compliant.

On-Site Finding 6.50 percent

Recommendation

Ensure the bottom landing slope is compliant and provides a smooth transition.

Recommendation Up to 5.00 percent

Costing Info (Estimated)

Repave landing \$1,260



Code Reference ADA 406, 406.2, CA 11B-406.5.8

Progress

Record Number	418949	Resolution	None
Progress	Not_Started	Priority	Seven
Actual Date		Projected Date	06/30/2032
Actual Cost	\$0.00	Contractor	
Comments	No Comments	New Value	0
Assignment	None		
Designated Staff			

Heritage Circle - Stewart & Gray Road To Heritage Circle

Curb Ramps - Exterior : Curb Ramp , Landings And Transitions

Southwest Corner Of Stewart & Gray Road @ 33.941815689805, - 118.157410472631

Bottom Landing

Finding

The transition from the bottom of the curb ramp to the walk, gutter, or street is abrupt.

On-Site Finding 1.25 inches

Recommendation

Patch the transition area at the bottom of the curb ramp so that the transition is flush and free of abrupt changes.

Recommendation Up to 0.50 inches

Costing Info (Estimated)

Patch lip at curb ramp \$255

Curb Ramp , Landings And Transitions : Bottom Landing Change in Level



Code Reference ADA 302, 303, 406.2, 303.1

Progress

Record Number	418950	Resolution	None
Progress	Not_Started	Priority	Seven
Actual Date		Projected Date	06/30/2032
Actual Cost	\$0.00	Contractor	
Comments	No Comments		
Assignment	None	New Value	0
Designated Staff			

Heritage Circle - Stewart & Gray Road To Heritage Circle

Curb Ramps - Exterior : Curb Ramp , Landings and Transitions

Southwest Corner Of Stewart & Gray Road @ 33.941815689805, - 118.157410472631

Top Landing

Curb Ramp , Landings and Transitions : Top Landing Clear Length - Landings

Finding

There is not enough top landing clear length.

On-Site Finding 0.00 inches

Recommendation

Provide a level top landing with enough clear length.

Recommendation At least 48.00 inches

Costing Info (Estimated)

Provide compliant landing \$240



Code Reference ADA 406, 406.4,CA 11B-406.5.3

Progress

Record Number	418951	Resolution	None
Progress	Not_Started	Priority	Seven
Actual Date		Projected Date	06/30/2032
Actual Cost	\$0.00	Contractor	
Comments	No Comments		
Assignment	None	New Value	0
Designated Staff			

Heritage Circle - Stewart & Gray Road To Heritage Circle

Sidewalks - Exterior : Sidewalks , Vehicular Traffic

East Side

Driveway South Of Stewart & Gray Road @ 33.940714221531, -118.158085048199

Sidewalks , Vehicular Traffic : Cross Walks and Detectable Warnings

Finding

There are no detectable warnings where the pedestrian route crosses vehicular traffic.

On-Site Finding Not Found

Recommendation

Provide detectable warnings.

Recommendation See Recommendation

Costing Info (Estimated)

Install compliant detectable warnings \$190



Code Reference ADA 705,CA 11B-705.1.2.5,CA 11B-247.1.2.5

Progress

Record Number	418940	Resolution	None
Progress	Not_Started	Priority	Seven
Actual Date		Projected Date	06/30/2032
Actual Cost	\$0.00	Contractor	
Comments	No Comments	New Value	0
Assignment	None		
Designated Staff			

Heritage Circle - Stewart & Gray Road To Heritage Circle

Sidewalks - Exterior : Sidewalks

East Side

Driveway South Of Stewart & Gray Road @ 33.940714221531, -118.158085048199

Sidewalks : Vehicular Traffic Cross Slope

Finding

Cross slope at vehicular traffic is not compliant.

On-Site Finding 6.50 percent

Recommendation

Repave the surface to provide a compliant cross slope.

Recommendation Up to 2.08 percent

Costing Info (Estimated)

Repave surface \$1,092



Code Reference ADA 206, 302, CA 11B-403.3

Progress

Record Number	418941	Resolution	None
Progress	Not_Started	Priority	Seven
Actual Date		Projected Date	06/30/2032
Actual Cost	\$0.00	Contractor	
Comments	No Comments	New Value	0
Assignment	None		
Designated Staff			

Heritage Circle - Stewart & Gray Road To Heritage Circle

Sidewalks - Exterior : Sidewalks , Vehicular Traffic

East Side

Driveway South Of Stewart & Gray Road @ 33.940715334133, -118.158359974623

Sidewalks , Vehicular Traffic : Cross Walks and Detectable Warnings

Finding

There are no detectable warnings where the pedestrian route crosses vehicular traffic.

On-Site Finding Not Found

Recommendation

Provide detectable warnings.

Recommendation See Recommendation

Costing Info (Estimated)

Install compliant detectable warnings \$190



Code Reference ADA 705,CA 11B-705.1.2.5,CA 11B-247.1.2.5

Progress

Record Number	418938	Resolution	None
Progress	Not_Started	Priority	Seven
Actual Date		Projected Date	06/30/2032
Actual Cost	\$0.00	Contractor	
Comments	No Comments	New Value	0
Assignment	None		
Designated Staff			

Heritage Circle - Stewart & Gray Road To Heritage Circle

Sidewalks - Exterior : Sidewalks

East Side

Driveway South Of Stewart & Gray Road @ 33.940715334133, -118.158359974623

Sidewalks : Vehicular Traffic Cross Slope

Finding

Cross slope at vehicular traffic is not compliant.

On-Site Finding 7.70 percent

Recommendation

Repave the surface to provide a compliant cross slope.

Recommendation Up to 2.08 percent

Costing Info (Estimated)

Repave surface \$1,092



Code Reference ADA 206, 302, CA 11B-403.3

Progress

Record Number	418939	Resolution	None
Progress	Not_Started	Priority	Seven
Actual Date		Projected Date	06/30/2032
Actual Cost	\$0.00	Contractor	
Comments	No Comments		
Assignment	None	New Value	0
Designated Staff			

Heritage Circle - Stewart & Gray Road To Heritage Circle

Sidewalks - Exterior : Sidewalks , Vehicular Traffic

East Side

Driveway South Of Stewart & Gray Road @ 33.940916714748, -118.158727437258

Sidewalks , Vehicular Traffic : Cross Walks and Detectable Warnings

Finding

There are no detectable warnings where the pedestrian route crosses vehicular traffic.

On-Site Finding Not Found

Recommendation

Provide detectable warnings.

Recommendation See Recommendation

Costing Info (Estimated)

Install compliant detectable warnings \$190



Code Reference ADA 705,CA 11B-705.1.2.5,CA 11B-247.1.2.5

Progress

Record Number	418936	Resolution	None
Progress	Not_Started	Priority	Seven
Actual Date		Projected Date	06/30/2032
Actual Cost	\$0.00	Contractor	
Comments	No Comments	New Value	0
Assignment	None		
Designated Staff			

Heritage Circle - Stewart & Gray Road To Heritage Circle

Sidewalks - Exterior : Sidewalks

East Side

Driveway South Of Stewart & Gray Road @ 33.940916714748, -118.158727437258

Sidewalks : Vehicular Traffic Cross Slope

Finding

Cross slope at vehicular traffic is not compliant.

On-Site Finding 8.40 percent

Recommendation

Repave the surface to provide a compliant cross slope.

Recommendation Up to 2.08 percent

Costing Info (Estimated)

Repave surface \$1,092



Code Reference ADA 206, 302, CA 11B-403.3

Progress

Record Number	418937	Resolution	None
Progress	Not_Started	Priority	Seven
Actual Date		Projected Date	06/30/2032
Actual Cost	\$0.00	Contractor	
Comments	No Comments	New Value	0
Assignment	None		
Designated Staff			

Heritage Circle - Stewart & Gray Road To Heritage Circle

Sidewalks - Exterior : Sidewalks , Vehicular Traffic

East Side

Driveway South Of Stewart & Gray Road @ 33.941004615, -118.157755136490

Sidewalks , Vehicular Traffic : Cross Walks and Detectable Warnings

Finding

There are no detectable warnings where the pedestrian route crosses vehicular traffic.

On-Site Finding Not Found

Recommendation

Provide detectable warnings.

Recommendation See Recommendation

Costing Info (Estimated)

Install compliant detectable warnings \$190



Code Reference ADA 705,CA 11B-705.1.2.5,CA 11B-247.1.2.5

Progress

Record Number	418944	Resolution	None
Progress	Not_Started	Priority	Seven
Actual Date		Projected Date	06/30/2032
Actual Cost	\$0.00	Contractor	
Comments	No Comments	New Value	0
Assignment	None		
Designated Staff			

Heritage Circle - Stewart & Gray Road To Heritage Circle

Sidewalks - Exterior : Sidewalks

East Side

Driveway South Of Stewart & Gray Road @ 33.941004615, -118.157755136490

Sidewalks : Vehicular Traffic Cross Slope

Finding

Cross slope at vehicular traffic is not compliant.

On-Site Finding 7.00 percent

Recommendation

Repave the surface to provide a compliant cross slope.

Recommendation Up to 2.08 percent

Costing Info (Estimated)

Repave surface \$1,092



Code Reference ADA 206, 302, CA 11B-403.3

Progress

Record Number	418945	Resolution	None
Progress	Not_Started	Priority	Seven
Actual Date		Projected Date	06/30/2032
Actual Cost	\$0.00	Contractor	
Comments	No Comments		
Assignment	None	New Value	0
Designated Staff			

Heritage Circle - Stewart & Gray Road To Heritage Circle

Sidewalks - Exterior : Sidewalks , Vehicular Traffic

East Side

Driveway South Of Stewart & Gray Road @ 33.941429621234, -118.157488256693

Sidewalks , Vehicular Traffic : Cross Walks and Detectable Warnings

Finding

There are no detectable warnings where the pedestrian route crosses vehicular traffic.

On-Site Finding Not Found

Recommendation

Provide detectable warnings.

Recommendation See Recommendation

Costing Info (Estimated)

Install compliant detectable warnings \$190



Code Reference ADA 705,CA 11B-705.1.2.5,CA 11B-247.1.2.5

Progress

Record Number	418942	Resolution	None
Progress	Not_Started	Priority	Seven
Actual Date		Projected Date	06/30/2032
Actual Cost	\$0.00	Contractor	
Comments	No Comments	New Value	0
Assignment	None		
Designated Staff			

Heritage Circle - Stewart & Gray Road To Heritage Circle

Sidewalks - Exterior : Sidewalks

East Side

Driveway South Of Stewart & Gray Road @ 33.941429621234, -118.157488256693

Sidewalks : Vehicular Traffic Cross Slope

Finding

Cross slope at vehicular traffic is not compliant.

On-Site Finding 8.70 percent

Recommendation

Repave the surface to provide a compliant cross slope.

Recommendation Up to 2.08 percent

Costing Info (Estimated)

Repave surface \$1,092



Code Reference ADA 206, 302,CA 11B-403.3

Progress

Record Number	418943	Resolution	None
Progress	Not_Started	Priority	Seven
Actual Date		Projected Date	06/30/2032
Actual Cost	\$0.00	Contractor	
Comments	No Comments	New Value	0
Assignment	None		
Designated Staff			

Heritage Circle - Stewart & Gray Road To Heritage Circle

Sidewalks - Exterior : Sidewalks , Surface

East Side

Sidewalk South Of Stewart & Gray Road @ 33.940707545922, -118.158145397902

Sidewalks , Surface : Cross Slope

Finding

Sidewalk cross slope is not compliant.

On-Site Finding 4.30 percent for 21.00 feet

Recommendation

Repave the sidewalk surface with the recommended cross slope.

Recommendation Up to 2.08 percent

Costing Info (Estimated)

Repave surface \$1,092



Code Reference ADA 206, 302,CA 11B-403.3

Progress

Record Number	418927	Resolution	None
Progress	Not_Started	Priority	Seven
Actual Date		Projected Date	06/30/2032
Actual Cost	\$0.00	Contractor	
Comments	No Comments	New Value	0
Assignment	None		
Designated Staff			

Heritage Circle - Stewart & Gray Road To Heritage Circle

Sidewalks - Exterior : Sidewalks , Surface

East Side

Sidewalk South Of Stewart & Gray Road @ 33.940752049971, -118.158480674028

Sidewalks , Surface : Cross Slope

Finding

Sidewalk cross slope is not compliant.

On-Site Finding 4.60 percent for 35.00 feet

Recommendation

Repave the sidewalk surface with the recommended cross slope.

Recommendation Up to 2.08 percent

Costing Info (Estimated)

Repave surface \$1,092



Code Reference ADA 206, 302,CA 11B-403.3

Progress

Record Number	418924	Resolution	None
Progress	Not_Started	Priority	Seven
Actual Date		Projected Date	06/30/2032
Actual Cost	\$0.00	Contractor	
Comments	No Comments	New Value	0
Assignment	None		
Designated Staff			

Heritage Circle - Stewart & Gray Road To Heritage Circle

Sidewalks - Exterior : Sidewalks , Surface

East Side

Sidewalk South Of Stewart & Gray Road @ 33.940965669079, -118.157772570848

Sidewalks , Surface : Cross Slope

Finding

Sidewalk cross slope is not compliant.

On-Site Finding 3.50 percent for 97.00 feet

Recommendation

Repave the sidewalk surface with the recommended cross slope.

Recommendation Up to 2.08 percent

Costing Info (Estimated)

Repave surface \$1,092



Code Reference ADA 206, 302,CA 11B-403.3

Progress

Record Number	418928	Resolution	None
Progress	Not_Started	Priority	Seven
Actual Date		Projected Date	06/30/2032
Actual Cost	\$0.00	Contractor	
Comments	No Comments	New Value	0
Assignment	None		
Designated Staff			

Heritage Circle - Stewart & Gray Road To Heritage Circle

Sidewalks - Exterior : Sidewalks

East Side

Sidewalk South Of Stewart & Gray Road @ 33.941003497407, -118.158825337887

Sidewalks : Missing Sidewalk

Finding

Section of sidewalk is missing and consists of dirt, grass or gravel.

On-Site Finding 650.00 feet

Recommendation

Provide a compliant sidewalk for the missing section.

Recommendation See Recommendation

Costing Info (Estimated)

\$1,260



Code Reference ADA 206, 302,CA 11B-302,CA 11B-206

Progress

Record Number	418925	Resolution	None
Progress	Not_Started	Priority	Seven
Actual Date		Projected Date	06/30/2037
Actual Cost	\$0.00	Contractor	
Comments	No Comments	New Value	0
Assignment	None		
Designated Staff			

Heritage Circle - Stewart & Gray Road To Heritage Circle

Sidewalks - Exterior : Sidewalks , Surface

East Side

Sidewalk South Of Stewart & Gray Road @ 33.941709993972, -118.157296478748

Sidewalks , Surface : Cross Slope

Finding

Sidewalk cross slope is not compliant.

On-Site Finding 4.10 percent for 106.00 feet

Recommendation

Repave the sidewalk surface with the recommended cross slope.

Recommendation Up to 2.08 percent

Costing Info (Estimated)

Repave surface \$1,092



Code Reference ADA 206, 302,CA 11B-403.3

Progress

Record Number	418926	Resolution	None
Progress	Not_Started	Priority	Seven
Actual Date		Projected Date	06/30/2032
Actual Cost	\$0.00	Contractor	
Comments	No Comments		
Assignment	None	New Value	0
Designated Staff			

Heritage Circle - Stewart & Gray Road To Heritage Circle

Sidewalks - Exterior : Sidewalks

East Side @ 33.941709993972, -118.157281726599

Sidewalks : 60X60 Turn Area

Finding

There is no 60X60 turn area at every 200 feet.

On-Site Finding Not Found

Recommendation

Provide a 60X60 turn every 200 feet on the sidewalk.

Recommendation See Recommendation

Costing Info (Estimated)

\$2,400



Code Reference ADA 206, 302

Progress

Record Number	418923	Resolution	None
Progress	Not_Started	Priority	Seven
Actual Date		Projected Date	06/30/2032
Actual Cost	\$0.00	Contractor	
Comments	No Comments		
Assignment	None	New Value	0
Designated Staff			

Heritage Circle - Stewart & Gray Road To Heritage Circle

Sidewalks - Exterior : Sidewalks , Hazards & Gratings

West Side

Curb South Of Heritage Circle @ 33.941417382720, -118.157655894756

Sidewalks , Hazards & Gratings : Curb is on Path of Travel

Finding

There is a curb on the designated path of travel.

On-Site Finding Not Compliant

Recommendation

Provide a compliant curb ramp.

Recommendation See Recommendation

Costing Info (Estimated)

Install curb ramp \$2,500



Code Reference ADA 402, 303, 406, 403.4, 303.4

Progress

Record Number	418909	Resolution	None
Progress	Not_Started	Priority	Seven
Actual Date		Projected Date	06/30/2032
Actual Cost	\$0.00	Contractor	
Comments	No Comments	New Value	0
Assignment	None		
Designated Staff			

Heritage Circle - Stewart & Gray Road To Heritage Circle

Sidewalks - Exterior : Sidewalks , Hazards & Gratings

West Side

Curb South Of Stewart & Gray Road @ 33.941539767777, -118.157591521740

Sidewalks , Hazards & Gratings : Curb is on Path of Travel

Finding

There is a curb on the designated path of travel.

On-Site Finding Not Compliant

Recommendation

Provide a compliant curb ramp.

Recommendation See Recommendation

Costing Info (Estimated)

Install curb ramp \$2,500



Code Reference ADA 402, 303, 406, 403.4, 303.4

Progress

Record Number	418916	Resolution	None
Progress	Not_Started	Priority	Seven
Actual Date		Projected Date	06/30/2032
Actual Cost	\$0.00	Contractor	
Comments	No Comments	New Value	0
Assignment	None		
Designated Staff			

Heritage Circle - Stewart & Gray Road To Heritage Circle

Sidewalks - Exterior : Sidewalks , Vehicular Traffic

West Side

Driveway South Of Heritage Circle @ 33.940953430499, -118.157987147570

Sidewalks , Vehicular Traffic : Cross Walks and Detectable Warnings

Finding

There are no detectable warnings where the pedestrian route crosses vehicular traffic.

On-Site Finding Not Found

Recommendation

Provide detectable warnings.

Recommendation See Recommendation

Costing Info (Estimated)

Install compliant detectable warnings \$190



Code Reference ADA 705,CA 11B-705.1.2.5,CA 11B-247.1.2.5

Progress

Record Number	418921	Resolution	None
Progress	Not_Started	Priority	Seven
Actual Date		Projected Date	06/30/2032
Actual Cost	\$0.00	Contractor	
Comments	No Comments	New Value	0
Assignment	None		
Designated Staff			

Heritage Circle - Stewart & Gray Road To Heritage Circle

Sidewalks - Exterior : Sidewalks

West Side

Driveway South Of Heritage Circle @ 33.940953430499, -118.157987147570

Sidewalks : Vehicular Traffic Cross Slope

Finding

Cross slope at vehicular traffic is not compliant.

On-Site Finding 5.80 percent

Recommendation

Repave the surface to provide a compliant cross slope.

Recommendation Up to 2.08 percent

Costing Info (Estimated)

Repave surface \$1,092



Code Reference ADA 206, 302,CA 11B-403.3

Progress

Record Number	418922	Resolution	None
Progress	Not_Started	Priority	Seven
Actual Date		Projected Date	06/30/2032
Actual Cost	\$0.00	Contractor	
Comments	No Comments		
Assignment	None	New Value	0
Designated Staff			

Heritage Circle - Stewart & Gray Road To Heritage Circle

Sidewalks - Exterior : Sidewalks , Hazards & Gratings

West Side

Hydrant South Of Stewart & Gray Road @ 33.941597622470, -118.157564699650

Sidewalks , Hazards & Gratings : Sidewalk Width at Obstruction

Finding

Sidewalk width at the obstruction is not compliant.

On-Site Finding 41.00 inches

Recommendation

Sidewalk width at the obstruction shall have the recommended value.

Recommendation At least 48.00 inches

Costing Info (Estimated)

\$1,260



Code Reference ADA 206, 302, 403.5.1, CA 11B-403.5

Progress

Record Number	418912	Resolution	None
Progress	Not_Started	Priority	Seven
Actual Date		Projected Date	06/30/2032
Actual Cost	\$0.00	Contractor	
Comments	No Comments	New Value	0
Assignment	None		
Designated Staff			

Heritage Circle - Stewart & Gray Road To Heritage Circle

Sidewalks - Exterior : Sidewalks , Surface

West Side

Sidewalk South Of Heritage Circle @ 33.940833269799, -118.158296942711

Sidewalks , Surface : Cross Slope

Finding

Sidewalk cross slope is not compliant.

On-Site Finding 3.40 percent for 52.00 feet

Recommendation

Repave the sidewalk surface with the recommended cross slope.

Recommendation Up to 2.08 percent

Costing Info (Estimated)

Repave surface \$1,092



Code Reference ADA 206, 302,CA 11B-403.3

Progress

Record Number	418905	Resolution	None
Progress	Not_Started	Priority	Seven
Actual Date		Projected Date	06/30/2032
Actual Cost	\$0.00	Contractor	
Comments	No Comments		
Assignment	None	New Value	0
Designated Staff			

Heritage Circle - Stewart & Gray Road To Heritage Circle

Sidewalks - Exterior : Sidewalks , Surface

West Side

Sidewalk South Of Heritage Circle @ 33.940944529712, -118.158009946346

Sidewalks , Surface : Cross Slope

Finding

Sidewalk cross slope is not compliant.

On-Site Finding 4.30 percent for 100.00 feet

Recommendation

Repave the sidewalk surface with the recommended cross slope.

Recommendation Up to 2.08 percent

Costing Info (Estimated)

Repave surface \$1,092



Code Reference ADA 206, 302, CA 11B-403.3

Progress

Record Number	418906	Resolution	None
Progress	Not_Started	Priority	Seven
Actual Date		Projected Date	06/30/2032
Actual Cost	\$0.00	Contractor	
Comments	No Comments		
Assignment	None	New Value	0
Designated Staff			

Heritage Circle - Stewart & Gray Road To Heritage Circle

Sidewalks - Exterior : Sidewalks

West Side

Sidewalk South Of Heritage Circle @ 33.941031312343, -118.158633559942

Sidewalks : Missing Sidewalk

Finding

Section of sidewalk is missing and consists of dirt, grass or gravel.

On-Site Finding 573.00 feet

Recommendation

Provide a compliant sidewalk for the missing section.

Recommendation See Recommendation

Costing Info (Estimated)

\$1,260



Code Reference ADA 206, 302,CA 11B-302,CA 11B-206

Progress

Record Number	418903	Resolution	None
Progress	Not_Started	Priority	Seven
Actual Date		Projected Date	06/30/2037
Actual Cost	\$0.00	Contractor	
Comments	No Comments	New Value	0
Assignment	None		
Designated Staff			

Heritage Circle - Stewart & Gray Road To Heritage Circle

Sidewalks - Exterior : Sidewalks , Surface

West Side

Sidewalk South Of Heritage Circle @ 33.941189301009, -118.157807439566

Sidewalks , Surface : Cross Slope

Finding

Sidewalk cross slope is not compliant.

On-Site Finding 4.10 percent for 106.00 feet

Recommendation

Repave the sidewalk surface with the recommended cross slope.

Recommendation Up to 2.08 percent

Costing Info (Estimated)

Repave surface \$1,092



Code Reference ADA 206, 302,CA 11B-403.3

Progress

Record Number	418908	Resolution	None
Progress	Not_Started	Priority	Seven
Actual Date		Projected Date	06/30/2032
Actual Cost	\$0.00	Contractor	
Comments	No Comments	New Value	0
Assignment	None		
Designated Staff			

Heritage Circle - Stewart & Gray Road To Heritage Circle

Sidewalks - Exterior : Sidewalks , Surface

West Side

Sidewalk South Of Heritage Circle @ 33.941409594574, -118.157685399055

Sidewalks , Surface : Cross Slope

Finding

Sidewalk cross slope is not compliant.

On-Site Finding 6.00 percent for 100.00 feet

Recommendation

Repave the sidewalk surface with the recommended cross slope.

Recommendation Up to 2.08 percent

Costing Info (Estimated)

Repave surface \$1,092



Code Reference ADA 206, 302, CA 11B-403.3

Progress

Record Number	418907	Resolution	None
Progress	Not_Started	Priority	Seven
Actual Date		Projected Date	06/30/2032
Actual Cost	\$0.00	Contractor	
Comments	No Comments	New Value	0
Assignment	None		
Designated Staff			

Heritage Circle - Stewart & Gray Road To Heritage Circle

Sidewalks - Exterior : Sidewalks , Surface

West Side

Sidewalk South Of Stewart & Gray Road @ 33.941794550649, -118.157414495945

Sidewalks , Surface : Cross Slope

Finding

Sidewalk cross slope is not compliant.

On-Site Finding 3.40 percent for 94.00 feet

Recommendation

Repave the sidewalk surface with the recommended cross slope.

Recommendation Up to 2.08 percent

Costing Info (Estimated)

Repave surface \$1,092



Code Reference ADA 206, 302,CA 11B-403.3

Progress

Record Number	418904	Resolution	None
Progress	Not_Started	Priority	Seven
Actual Date		Projected Date	06/30/2032
Actual Cost	\$0.00	Contractor	
Comments	No Comments		
Assignment	None	New Value	0
Designated Staff			

Heritage Circle - Stewart & Gray Road To Heritage Circle

Sidewalks - Exterior : Sidewalks

West Side @ 33.941794550649, -118.157414495945

Sidewalks : Turn Area

Finding

Turn area is not level.

On-Site Finding Not Level

Recommendation

Make sure that the turn area is level.

Recommendation See Recommendation

Costing Info (Estimated)

\$1,260



Code Reference ADA 206, 302

Progress

Record Number	418902	Resolution	None
Progress	Not_Started	Priority	Seven
Actual Date		Projected Date	06/30/2032
Actual Cost	\$0.00	Contractor	
Comments	No Comments		
Assignment	None	New Value	0
Designated Staff			

Heritage Circle - Stewart & Gray Road To Heritage Circle



Heritage Circle - Stewart & Gray Road To Heritage Circle

**Stewart & Gray Road To Heritage Circle
Downey, CA 90242**

Date of Inspection
5/3/2017

***Estimated Facility Total: \$43,634**

*Estimated facility total is for estimating purposes only and does not represent total construction, repair totals or design fees.

Prepared By

Disability Access Consultants

(800) 743-7067

Prepared Using

