

# Accessibility Survey

---



## City of Downey Mitla Avenue - De Palma Street To End

De Palma Street To End  
Downey, CA 90242

Date of Inspection  
4/21/2017

Prepared By  
**Disability Access Consultants**  
(800) 743-7067

## Mitla Avenue - De Palma Street To End

### Sidewalks - Exterior : Sidewalks , Change in Level

---

#### East Side

#### Change In Level South Of Adwen Street @ 33.947169290185, -118.158019334078

Sidewalks , Change in Level : Change in Level Non Beveled

#### Finding

There is a change in elevation greater than recommended value.

**On-Site Finding** 0.50 inches

#### Recommendation

Ensure that the change in elevation is within the recommended value.

Recommendation Up to 0.25 inches

#### Costing Info (Estimated)

Remove tripping hazards \$198



**Code Reference** ADA 206, 302

#### Progress

---

<b>Record Number</b>	409316	<b>Resolution</b>	None
<b>Progress</b>	Not_Started	<b>Priority</b>	Two
<b>Actual Date</b>		<b>Projected Date</b>	06/30/2021
<b>Actual Cost</b>	\$0.00	<b>Contractor</b>	
<b>Comments</b>	No Comments	<b>New Value</b>	0
<b>Assignment</b>	None		
<b>Designated Staff</b>			

**Mitla Avenue - De Palma Street To End**

**Sidewalks - Exterior : Sidewalks , Change in Level**

---

**East Side**

**Change In Level South Of Benares Street @ 33.946274821780, -118.158657699823**

Sidewalks , Change in Level : Change in Level Non Beveled

**Finding**

There is a change in elevation greater than recommended value.

**On-Site Finding** 0.75 inches

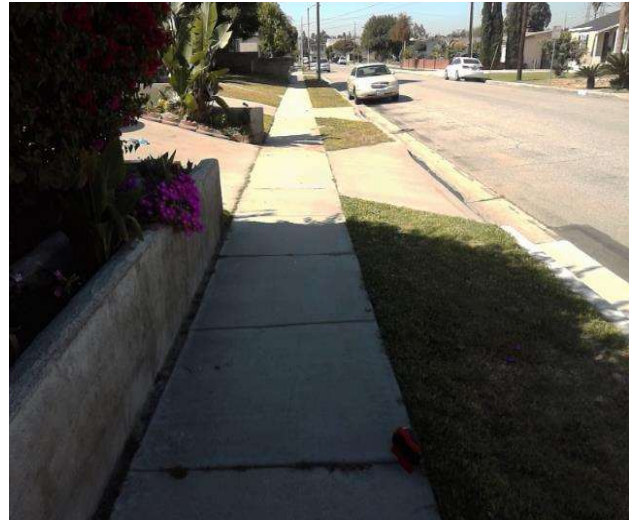
**Recommendation**

Ensure that the change in elevation is within the recommended value.

Recommendation Up to 0.25 inches

**Costing Info (Estimated)**

Remove tripping hazards \$198



**Code Reference** ADA 206, 302

**Progress**

---

<b>Record Number</b>	409317	<b>Resolution</b>	None
<b>Progress</b>	Not_Started	<b>Priority</b>	Two
<b>Actual Date</b>		<b>Projected Date</b>	06/30/2021
<b>Actual Cost</b>	\$0.00	<b>Contractor</b>	
<b>Comments</b>	No Comments		
<b>Assignment</b>	None	<b>New Value</b>	0
<b>Designated Staff</b>			

## Mitla Avenue - De Palma Street To End

### Sidewalks - Exterior : Sidewalks , Change in Level

---

#### West Side

#### Change In Level North Of Luxor Street @ 33.945670716532, -118.159293383360

Sidewalks , Change in Level : Change in Level Non Beveled

#### Finding

There is a change in elevation greater than recommended value.

**On-Site Finding** 0.75 inches

#### Recommendation

Ensure that the change in elevation is within the recommended value.

Recommendation Up to 0.25 inches

#### Costing Info (Estimated)

Remove tripping hazards \$198



**Code Reference** ADA 206, 302

#### Progress

---

<b>Record Number</b>	409306	<b>Resolution</b>	None
<b>Progress</b>	Not_Started	<b>Priority</b>	Two
<b>Actual Date</b>		<b>Projected Date</b>	06/30/2021
<b>Actual Cost</b>	\$0.00	<b>Contractor</b>	
<b>Comments</b>	No Comments	<b>New Value</b>	0
<b>Assignment</b>	None		
<b>Designated Staff</b>			

**Mitla Avenue - De Palma Street To End**

**Sidewalks - Exterior : Sidewalks , Change in Level**

---

**West Side**

**Change In Level North Of Luxor Street @ 33.945685179507, -118.159288018942**

Sidewalks , Change in Level : Change in Level Non Beveled

**Finding**

There is a change in elevation greater than recommended value.

**On-Site Finding** 0.75 inches

**Recommendation**

Ensure that the change in elevation is within the recommended value.

Recommendation Up to 0.25 inches

**Costing Info (Estimated)**

Remove tripping hazards \$198



**Code Reference** ADA 206, 302

**Progress**

---

<b>Record Number</b>	409299	<b>Resolution</b>	None
<b>Progress</b>	Not_Started	<b>Priority</b>	Two
<b>Actual Date</b>		<b>Projected Date</b>	06/30/2021
<b>Actual Cost</b>	\$0.00	<b>Contractor</b>	
<b>Comments</b>	No Comments	<b>New Value</b>	0
<b>Assignment</b>	None		
<b>Designated Staff</b>			

**Mitla Avenue - De Palma Street To End**

**Sidewalks - Exterior : Sidewalks , Change in Level**

---

**West Side**

**Change In Level North Of Luxor Street @ 33.945781970122, -118.159215599298**

Sidewalks , Change in Level : Change in Level Non Beveled

**Finding**

There is a change in elevation greater than recommended value.

**On-Site Finding** 0.62 inches

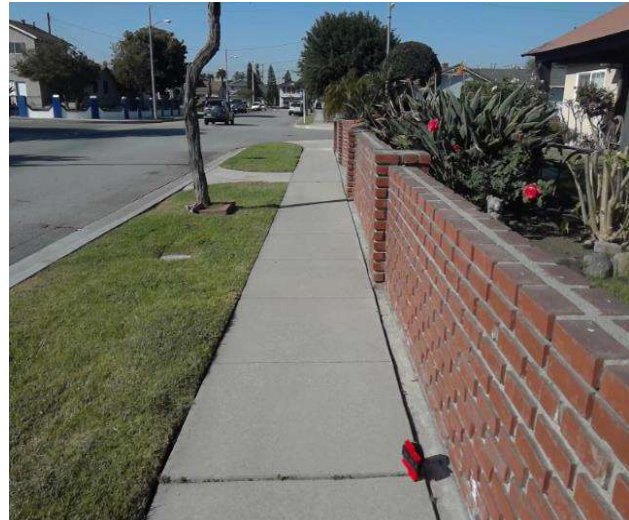
**Recommendation**

Ensure that the change in elevation is within the recommended value.

Recommendation Up to 0.25 inches

**Costing Info (Estimated)**

Remove tripping hazards \$198



**Code Reference** ADA 206, 302

**Progress**

---

<b>Record Number</b>	409300	<b>Resolution</b>	None
<b>Progress</b>	Not_Started	<b>Priority</b>	Two
<b>Actual Date</b>		<b>Projected Date</b>	06/30/2021
<b>Actual Cost</b>	\$0.00	<b>Contractor</b>	
<b>Comments</b>	No Comments	<b>New Value</b>	0
<b>Assignment</b>	None		
<b>Designated Staff</b>			

**Mitla Avenue - De Palma Street To End**

**Sidewalks - Exterior : Sidewalks , Change in Level**

---

**West Side**

**Change In Level North Of Luxor Street @ 33.945943287570, -118.159112334251**

Sidewalks , Change in Level : Change in Level Non Beveled

**Finding**

There is a change in elevation greater than recommended value.

**On-Site Finding** 0.87 inches

**Recommendation**

Ensure that the change in elevation is within the recommended value.

Recommendation Up to 0.25 inches

**Costing Info (Estimated)**

Remove tripping hazards \$198



**Code Reference** ADA 206, 302

**Progress**

---

<b>Record Number</b>	409304	<b>Resolution</b>	None
<b>Progress</b>	Not_Started	<b>Priority</b>	Two
<b>Actual Date</b>		<b>Projected Date</b>	06/30/2021
<b>Actual Cost</b>	\$0.00	<b>Contractor</b>	
<b>Comments</b>	No Comments	<b>New Value</b>	0
<b>Assignment</b>	None		
<b>Designated Staff</b>			

**Mitla Avenue - De Palma Street To End**

**Sidewalks - Exterior : Sidewalks , Change in Level**

---

**West Side**

**Change In Level North Of Luxor Street @ 33.946578541583, -118.158641606569**

Sidewalks , Change in Level : Change in Level Non Beveled

**Finding**

There is a change in elevation greater than recommended value.

**On-Site Finding** 0.62 inches

**Recommendation**

Ensure that the change in elevation is within the recommended value.

Recommendation Up to 0.25 inches

**Costing Info (Estimated)**

Remove tripping hazards \$198



**Code Reference** ADA 206, 302

**Progress**

---

<b>Record Number</b>	409301	<b>Resolution</b>	None
<b>Progress</b>	Not_Started	<b>Priority</b>	Two
<b>Actual Date</b>		<b>Projected Date</b>	06/30/2021
<b>Actual Cost</b>	\$0.00	<b>Contractor</b>	
<b>Comments</b>	No Comments	<b>New Value</b>	0
<b>Assignment</b>	None		
<b>Designated Staff</b>			



**Mitla Avenue - De Palma Street To End**

**Sidewalks - Exterior : Sidewalks , Change in Level**

---

**West Side**

**Change In Level North Of Luxor Street @ 33.947045800703, -118.158317059278**

Sidewalks , Change in Level : Change in Level Non Beveled

**Finding**

There is a change in elevation greater than recommended value.

**On-Site Finding** 0.50 inches

**Recommendation**

Ensure that the change in elevation is within the recommended value.

Recommendation Up to 0.25 inches

**Costing Info (Estimated)**

Remove tripping hazards \$198



**Code Reference** ADA 206, 302

**Progress**

---

<b>Record Number</b>	409305	<b>Resolution</b>	None
<b>Progress</b>	Not_Started	<b>Priority</b>	Two
<b>Actual Date</b>		<b>Projected Date</b>	06/30/2021
<b>Actual Cost</b>	\$0.00	<b>Contractor</b>	
<b>Comments</b>	No Comments	<b>New Value</b>	0
<b>Assignment</b>	None		
<b>Designated Staff</b>			

## Mitla Avenue - De Palma Street To End

### Sidewalks - Exterior : Sidewalks , Change in Level

---

#### West Side

#### Change In Level North Of Luxor Street @ 33.947173740253, -118.158221840858

Sidewalks , Change in Level : Change in Level Non Beveled

#### Finding

There is a change in elevation greater than recommended value.

**On-Site Finding** 0.62 inches

#### Recommendation

Ensure that the change in elevation is within the recommended value.

Recommendation Up to 0.25 inches

#### Costing Info (Estimated)

Remove tripping hazards \$198



**Code Reference** ADA 206, 302

#### Progress

---

<b>Record Number</b>	409302	<b>Resolution</b>	None
<b>Progress</b>	Not_Started	<b>Priority</b>	Two
<b>Actual Date</b>		<b>Projected Date</b>	06/30/2021
<b>Actual Cost</b>	\$0.00	<b>Contractor</b>	
<b>Comments</b>	No Comments	<b>New Value</b>	0
<b>Assignment</b>	None		
<b>Designated Staff</b>			

## Mitla Avenue - De Palma Street To End

### Sidewalks - Exterior : Sidewalks , Change in Level

---

#### West Side

#### Change In Level North Of Luxor Street @ 33.947717759321, -118.157854378223

Sidewalks , Change in Level : Change in Level Non Beveled

#### Finding

There is a change in elevation greater than recommended value.

**On-Site Finding** 0.62 inches

#### Recommendation

Ensure that the change in elevation is within the recommended value.

Recommendation Up to 0.25 inches

#### Costing Info (Estimated)

Remove tripping hazards \$198



**Code Reference** ADA 206, 302

#### Progress

---

<b>Record Number</b>	409298	<b>Resolution</b>	None
<b>Progress</b>	Not_Started	<b>Priority</b>	Two
<b>Actual Date</b>		<b>Projected Date</b>	06/30/2021
<b>Actual Cost</b>	\$0.00	<b>Contractor</b>	
<b>Comments</b>	No Comments	<b>New Value</b>	0
<b>Assignment</b>	None		
<b>Designated Staff</b>			

## Mitla Avenue - De Palma Street To End

### Sidewalks - Exterior : Sidewalks , Change in Level

---

#### West Side

#### Change In Level North Of Luxor Street @ 33.947978086235, -118.157665282488

Sidewalks , Change in Level : Change in Level Non Beveled

#### Finding

There is a change in elevation greater than recommended value.

**On-Site Finding** 0.50 inches

#### Recommendation

Ensure that the change in elevation is within the recommended value.

Recommendation Up to 0.25 inches

#### Costing Info (Estimated)

Remove tripping hazards \$198



**Code Reference** ADA 206, 302

#### Progress

---

<b>Record Number</b>	409303	<b>Resolution</b>	None
<b>Progress</b>	Not_Started	<b>Priority</b>	Two
<b>Actual Date</b>		<b>Projected Date</b>	06/30/2021
<b>Actual Cost</b>	\$0.00	<b>Contractor</b>	
<b>Comments</b>	No Comments	<b>New Value</b>	0
<b>Assignment</b>	None		
<b>Designated Staff</b>			

**Mitla Avenue - De Palma Street To End**

**Curb Ramps - Exterior : Curb Ramp**

**Northeast Corner Of Adwen Street @ 33.947494144542, - 118.157787322998**

Curb Ramp : No Detectable Warnings

**Finding**

The curb ramp does not provide a detectable warning surface which includes truncated domes.

**On-Site Finding** Not Found

**Recommendation**

Provide compliant detectable warnings to surface.

Recommendation See Recommendation

**Costing Info (Estimated)**

Provide detectable warning to surface \$248



**Code Reference** CA 11B-406.5.12

**Progress**

<b>Record Number</b>	409324	<b>Resolution</b>	None
<b>Progress</b>	Not_Started	<b>Priority</b>	Seven
<b>Actual Date</b>		<b>Projected Date</b>	06/30/2032
<b>Actual Cost</b>	\$0.00	<b>Contractor</b>	
<b>Comments</b>	No Comments	<b>New Value</b>	0
<b>Assignment</b>	None		
<b>Designated Staff</b>			

**Mitla Avenue - De Palma Street To End**

**Curb Ramps - Exterior : Curb Ramp**

**Northeast Corner Of Adwen Street @ 33.947494144542, - 118.157787322998**

Curb Ramp : Curb Ramp Slope

**Finding**

The running slope is greater than allowed.

**On-Site Finding** 12.70 percent

**Recommendation**

Provide a compliant curb ramp.

Recommendation Up to 8.33 percent

**Costing Info (Estimated)**

Install curb ramp \$1,300



**Code Reference** ADA 406, 406.1, 405.2, CA 11B-406

**Progress**

<b>Record Number</b>	409325	<b>Resolution</b>	None
<b>Progress</b>	Not_Started	<b>Priority</b>	Seven
<b>Actual Date</b>		<b>Projected Date</b>	06/30/2032
<b>Actual Cost</b>	\$0.00	<b>Contractor</b>	
<b>Comments</b>	No Comments	<b>New Value</b>	0
<b>Assignment</b>	None		
<b>Designated Staff</b>			

**Mitla Avenue - De Palma Street To End**

**Curb Ramps - Exterior : Curb Ramp**

**Northeast Corner Of Adwen Street @ 33.947494144542, - 118.157787322998**

Curb Ramp : Curb Ramp - Cross Slope

**Finding**

The cross slope is greater than allowed.

**On-Site Finding** 2.70 percent

**Recommendation**

Provide a compliant curb ramp.

Recommendation Up to 2.08 percent

**Costing Info (Estimated)**

Install curb ramp \$1,300



**Code Reference** ADA 402, 406.1, 405.3, CA 11B-406.5.7

**Progress**

<b>Record Number</b>	409326	<b>Resolution</b>	None
<b>Progress</b>	Not_Started	<b>Priority</b>	Seven
<b>Actual Date</b>		<b>Projected Date</b>	06/30/2032
<b>Actual Cost</b>	\$0.00	<b>Contractor</b>	
<b>Comments</b>	No Comments		
<b>Assignment</b>	None	<b>New Value</b>	0
<b>Designated Staff</b>			

**Mitla Avenue - De Palma Street To End**

**Curb Ramps - Exterior : Curb Ramp**

**Northeast Corner Of Adwen Street @ 33.947494144542, - 118.157787322998**

Curb Ramp : Side Flare Slope

**Finding**

The slope of the curb ramp side flare is greater than allowed.

**On-Site Finding** 14.40 percent

**Recommendation**

Provide curb ramp side flares with a compliant slope.

Recommendation Up to 10.00 percent

**Costing Info (Estimated)**

Install flared sides \$1,300



**Code Reference** ADA 406, 406.3,CA 11B-406.2.2

**Progress**

<b>Record Number</b>	409327	<b>Resolution</b>	None
<b>Progress</b>	Not_Started	<b>Priority</b>	Seven
<b>Actual Date</b>		<b>Projected Date</b>	06/30/2032
<b>Actual Cost</b>	\$0.00	<b>Contractor</b>	
<b>Comments</b>	No Comments		
<b>Assignment</b>	None	<b>New Value</b>	0
<b>Designated Staff</b>			



**Mitla Avenue - De Palma Street To End**

**Curb Ramps - Exterior : Curb Ramp , Landings and Transitions**

---

**Northeast Corner Of Adwen Street @ 33.947494144542, - 118.157787322998**

**Top Landing**

Curb Ramp , Landings and Transitions : Top Landing Slope

**Finding**

The slope at the top landing is greater than allowed.

**On-Site Finding** 3.30 percent

**Recommendation**

Provide a top landing surface that does not exceed the maximum slope and cross slope. Provide a sufficient maneuvering clearance that does not accumulate water.

Recommendation Up to 2.08 percent

**Costing Info (Estimated)**

Provide compliant landing \$1,260



**Code Reference** ADA 402, 406.4, 403.3, 406.1, CA 11B-406.5.3

**Progress**

---

<b>Record Number</b>	409328	<b>Resolution</b>	None
<b>Progress</b>	Not_Started	<b>Priority</b>	Seven
<b>Actual Date</b>		<b>Projected Date</b>	06/30/2032
<b>Actual Cost</b>	\$0.00	<b>Contractor</b>	
<b>Comments</b>	No Comments		
<b>Assignment</b>	None	<b>New Value</b>	0
<b>Designated Staff</b>			

## Mitla Avenue - De Palma Street To End

### Curb Ramps - Exterior : Curb Ramp

#### Northwest Corner Of De Palma Street @ 33.944841872704, - 118.159903585911

Curb Ramp : No Detectable Warnings

#### Finding

The curb ramp does not provide a detectable warning surface which includes truncated domes.

**On-Site Finding** Not Found

#### Recommendation

Provide compliant detectable warnings to surface.

Recommendation See Recommendation

#### Costing Info (Estimated)

Provide detectable warning to surface \$248



**Code Reference** CA 11B-406.5.12

### Progress

<b>Record Number</b>	409290	<b>Resolution</b>	None
<b>Progress</b>	Not_Started	<b>Priority</b>	Seven
<b>Actual Date</b>		<b>Projected Date</b>	06/30/2032
<b>Actual Cost</b>	\$0.00	<b>Contractor</b>	
<b>Comments</b>	No Comments	<b>New Value</b>	0
<b>Assignment</b>	None		
<b>Designated Staff</b>			

**Mitla Avenue - De Palma Street To End**

**Curb Ramps - Exterior : Curb Ramp**

**Northwest Corner Of De Palma Street @ 33.944841872704, - 118.159903585911**

Curb Ramp : Curb Ramp Slope

**Finding**

The running slope is greater than allowed.

**On-Site Finding** 9.50 percent

**Recommendation**

Provide a compliant curb ramp.

Recommendation Up to 8.33 percent

**Costing Info (Estimated)**

Install curb ramp \$1,300



**Code Reference** ADA 406, 406.1, 405.2, CA 11B-406

**Progress**

<b>Record Number</b>	409291	<b>Resolution</b>	None
<b>Progress</b>	Not_Started	<b>Priority</b>	Seven
<b>Actual Date</b>		<b>Projected Date</b>	06/30/2032
<b>Actual Cost</b>	\$0.00	<b>Contractor</b>	
<b>Comments</b>	No Comments	<b>New Value</b>	0
<b>Assignment</b>	None		
<b>Designated Staff</b>			

## Mitla Avenue - De Palma Street To End

### Curb Ramps - Exterior : Curb Ramp

#### Northwest Corner Of De Palma Street @ 33.944841872704, - 118.159903585911

Curb Ramp : Side Flare Slope

#### Finding

The slope of the curb ramp side flare is greater than allowed.

**On-Site Finding** 13.00 percent

#### Recommendation

Provide curb ramp side flares with a compliant slope.

Recommendation Up to 10.00 percent

#### Costing Info (Estimated)

Install flared sides \$1,300



**Code Reference** ADA 406, 406.3, CA 11B-406.2.2

### Progress

<b>Record Number</b>	409292	<b>Resolution</b>	None
<b>Progress</b>	Not_Started	<b>Priority</b>	Seven
<b>Actual Date</b>		<b>Projected Date</b>	06/30/2032
<b>Actual Cost</b>	\$0.00	<b>Contractor</b>	
<b>Comments</b>	No Comments		
<b>Assignment</b>	None	<b>New Value</b>	0
<b>Designated Staff</b>			

## Mitla Avenue - De Palma Street To End

### Curb Ramps - Exterior : Curb Ramp , Landings and Transitions

---

#### Northwest Corner Of De Palma Street @ 33.944841872704, - 118.159903585911

##### Top Landing

Curb Ramp , Landings and Transitions : Top Landing Slope

##### Finding

The slope at the top landing is greater than allowed.

**On-Site Finding** 3.50 percent

##### Recommendation

Provide a top landing surface that does not exceed the maximum slope and cross slope. Provide a sufficient maneuvering clearance that does not accumulate water.

Recommendation Up to 2.08 percent

##### Costing Info (Estimated)

Provide compliant landing \$1,260



**Code Reference** ADA 402, 406.4, 403.3, 406.1, CA 11B-406.5.3

### Progress

---

<b>Record Number</b>	409293	<b>Resolution</b>	None
<b>Progress</b>	Not_Started	<b>Priority</b>	Seven
<b>Actual Date</b>		<b>Projected Date</b>	06/30/2032
<b>Actual Cost</b>	\$0.00	<b>Contractor</b>	
<b>Comments</b>	No Comments		
<b>Assignment</b>	None	<b>New Value</b>	0
<b>Designated Staff</b>			

**Mitla Avenue - De Palma Street To End**

**Curb Ramps - Exterior : Curb Ramp**

**Southeast Corner Of Adwen Street @ 33.947353967814, - 118.157883882523**

Curb Ramp : No Detectable Warnings

**Finding**

The curb ramp does not provide a detectable warning surface which includes truncated domes.

**On-Site Finding** Not Found

**Recommendation**

Provide compliant detectable warnings to surface.

Recommendation See Recommendation

**Costing Info (Estimated)**

Provide detectable warning to surface \$248



**Code Reference** CA 11B-406.5.12

**Progress**

<b>Record Number</b>	409320	<b>Resolution</b>	None
<b>Progress</b>	Not_Started	<b>Priority</b>	Seven
<b>Actual Date</b>		<b>Projected Date</b>	06/30/2032
<b>Actual Cost</b>	\$0.00	<b>Contractor</b>	
<b>Comments</b>	No Comments	<b>New Value</b>	0
<b>Assignment</b>	None		
<b>Designated Staff</b>			

**Mitla Avenue - De Palma Street To End**

**Curb Ramps - Exterior : Curb Ramp**

**Southeast Corner Of Adwen Street @ 33.947353967814, - 118.157883882523**

Curb Ramp : Curb Ramp Slope

**Finding**

The running slope is greater than allowed.

**On-Site Finding** 12.20 percent

**Recommendation**

Provide a compliant curb ramp.

Recommendation Up to 8.33 percent

**Costing Info (Estimated)**

Install curb ramp \$1,300



**Code Reference** ADA 406, 406.1, 405.2, CA 11B-406

**Progress**

<b>Record Number</b>	409321	<b>Resolution</b>	None
<b>Progress</b>	Not_Started	<b>Priority</b>	Seven
<b>Actual Date</b>		<b>Projected Date</b>	06/30/2032
<b>Actual Cost</b>	\$0.00	<b>Contractor</b>	
<b>Comments</b>	No Comments	<b>New Value</b>	0
<b>Assignment</b>	None		
<b>Designated Staff</b>			

**Mitla Avenue - De Palma Street To End**

**Curb Ramps - Exterior : Curb Ramp**

**Southeast Corner Of Adwen Street @ 33.947353967814, - 118.157883882523**

Curb Ramp : Side Flare Slope

**Finding**

The slope of the curb ramp side flare is greater than allowed.

**On-Site Finding** 21.10 percent

**Recommendation**

Provide curb ramp side flares with a compliant slope.

Recommendation Up to 10.00 percent

**Costing Info (Estimated)**

Install flared sides \$1,300



**Code Reference** ADA 406, 406.3,CA 11B-406.2.2

**Progress**

<b>Record Number</b>	409322	<b>Resolution</b>	None
<b>Progress</b>	Not_Started	<b>Priority</b>	Seven
<b>Actual Date</b>		<b>Projected Date</b>	06/30/2032
<b>Actual Cost</b>	\$0.00	<b>Contractor</b>	
<b>Comments</b>	No Comments		
<b>Assignment</b>	None	<b>New Value</b>	0
<b>Designated Staff</b>			



**Mitla Avenue - De Palma Street To End**

**Curb Ramps - Exterior : Curb Ramp , Landings and Transitions**

---

**Southeast Corner Of Adwen Street @ 33.947353967814, - 118.157883882523**

**Top Landing**

Curb Ramp , Landings and Transitions : Top Landing Slope

**Finding**

The slope at the top landing is greater than allowed.

**On-Site Finding** 3.20 percent

**Recommendation**

Provide a top landing surface that does not exceed the maximum slope and cross slope. Provide a sufficient maneuvering clearance that does not accumulate water.

Recommendation Up to 2.08 percent

**Costing Info (Estimated)**

Provide compliant landing \$1,260



**Code Reference** ADA 402, 406.4, 403.3, 406.1, CA 11B-406.5.3

**Progress**

---

<b>Record Number</b>	409323	<b>Resolution</b>	None
<b>Progress</b>	Not_Started	<b>Priority</b>	Seven
<b>Actual Date</b>		<b>Projected Date</b>	06/30/2032
<b>Actual Cost</b>	\$0.00	<b>Contractor</b>	
<b>Comments</b>	No Comments		
<b>Assignment</b>	None	<b>New Value</b>	0
<b>Designated Staff</b>			

**Mitla Avenue - De Palma Street To End**

**Sidewalks - Exterior : Sidewalks , Hazards & Gratings**

---

**East Side**

**Curb Northeast Corner Of De Palma Street @ 33.944751756312, -118.159742653370**

Sidewalks , Hazards & Gratings : Curb is on Path of Travel

**Finding**

There is a curb on the designated path of travel.

**On-Site Finding** Not Compliant

**Recommendation**

Provide a compliant curb ramp.

Recommendation See Recommendation

**Costing Info (Estimated)**

Install curb ramp \$2,500



**Code Reference** ADA 402, 303, 406, 403.4, 303.4

**Progress**

---

<b>Record Number</b>	409318	<b>Resolution</b>	None
<b>Progress</b>	Not_Started	<b>Priority</b>	Seven
<b>Actual Date</b>		<b>Projected Date</b>	06/30/2032
<b>Actual Cost</b>	\$0.00	<b>Contractor</b>	
<b>Comments</b>	No Comments	<b>New Value</b>	0
<b>Assignment</b>	None		
<b>Designated Staff</b>			

**Mitla Avenue - De Palma Street To End**

**Sidewalks - Exterior : Sidewalks**

---

**East Side**

**Luxor Street East Crossing @ 33.945492710484, -118.159227669239**

Sidewalks : Vehicular Traffic Slope

**Finding**

Slope at vehicular traffic is not compliant.

**On-Site Finding** 6.30 percent

**Recommendation**

Repave the surface to provide a compliant slope.

Recommendation Up to 5.00 percent

**Costing Info (Estimated)**

Repave surface \$1,092



**Code Reference**

**Progress**

---

<b>Record Number</b>	409319	<b>Resolution</b>	None
<b>Progress</b>	Not_Started	<b>Priority</b>	Seven
<b>Actual Date</b>		<b>Projected Date</b>	06/30/2032
<b>Actual Cost</b>	\$0.00	<b>Contractor</b>	
<b>Comments</b>	No Comments	<b>New Value</b>	0
<b>Assignment</b>	None		
<b>Designated Staff</b>			

## Mitla Avenue - De Palma Street To End

### Sidewalks - Exterior : Sidewalks , Surface

---

#### East Side

#### Sidewalk South Of Benares Street @ 33.945825358983, -118.158986270428

Sidewalks , Surface : Cross Slope

#### Finding

Sidewalk cross slope is not compliant.

**On-Site Finding** 4.20 percent for 111.00 feet

#### Recommendation

Repave the sidewalk surface with the recommended cross slope.

Recommendation Up to 2.08 percent

#### Costing Info (Estimated)

Repave surface \$1,092



**Code Reference** ADA 206, 302, CA 11B-403.3

#### Progress

---

<b>Record Number</b>	409311	<b>Resolution</b>	None
<b>Progress</b>	Not_Started	<b>Priority</b>	Seven
<b>Actual Date</b>		<b>Projected Date</b>	06/30/2032
<b>Actual Cost</b>	\$0.00	<b>Contractor</b>	
<b>Comments</b>	No Comments	<b>New Value</b>	0
<b>Assignment</b>	None		
<b>Designated Staff</b>			

**Mitla Avenue - De Palma Street To End**

**Sidewalks - Exterior : Sidewalks , Surface**

---

**East Side**

**Sidewalk South Of Benares Street @ 33.946204732440, -118.158703297377**

Sidewalks , Surface : Cross Slope

**Finding**

Sidewalk cross slope is not compliant.

**On-Site Finding** 4.10 percent for 95.00 feet

**Recommendation**

Repave the sidewalk surface with the recommended cross slope.

Recommendation Up to 2.08 percent

**Costing Info (Estimated)**

Repave surface \$1,092



**Code Reference** ADA 206, 302,CA 11B-403.3

**Progress**

---

<b>Record Number</b>	409313	<b>Resolution</b>	None
<b>Progress</b>	Not_Started	<b>Priority</b>	Seven
<b>Actual Date</b>		<b>Projected Date</b>	06/30/2032
<b>Actual Cost</b>	\$0.00	<b>Contractor</b>	
<b>Comments</b>	No Comments	<b>New Value</b>	0
<b>Assignment</b>	None		
<b>Designated Staff</b>			

**Mitla Avenue - De Palma Street To End**

**Sidewalks - Exterior : Sidewalks , Surface**

---

**East Side**

**Sidewalk South Of Benares Street @ 33.946867797531, -118.158228546381**

Sidewalks , Surface : Cross Slope

**Finding**

Sidewalk cross slope is not compliant.

**On-Site Finding** 3.80 percent for 130.00 feet

**Recommendation**

Repave the sidewalk surface with the recommended cross slope.

Recommendation Up to 2.08 percent

**Costing Info (Estimated)**

Repave surface \$1,092



**Code Reference** ADA 206, 302, CA 11B-403.3

**Progress**

---

<b>Record Number</b>	409312	<b>Resolution</b>	None
<b>Progress</b>	Not_Started	<b>Priority</b>	Seven
<b>Actual Date</b>		<b>Projected Date</b>	06/30/2032
<b>Actual Cost</b>	\$0.00	<b>Contractor</b>	
<b>Comments</b>	No Comments		
<b>Assignment</b>	None	<b>New Value</b>	0
<b>Designated Staff</b>			

**Mitla Avenue - De Palma Street To End**

**Sidewalks - Exterior : Sidewalks , Surface**

---

**East Side**

**Sidewalk South Of End @ 33.947606508261, -118.157714903355**

Sidewalks , Surface : Cross Slope

**Finding**

Sidewalk cross slope is not compliant.

**On-Site Finding** 4.60 percent for 47.00 feet

**Recommendation**

Repave the sidewalk surface with the recommended cross slope.

Recommendation Up to 2.08 percent

**Costing Info (Estimated)**

Repave surface \$1,092



**Code Reference** ADA 206, 302, CA 11B-403.3

**Progress**

---

<b>Record Number</b>	409310	<b>Resolution</b>	None
<b>Progress</b>	Not_Started	<b>Priority</b>	Seven
<b>Actual Date</b>		<b>Projected Date</b>	06/30/2032
<b>Actual Cost</b>	\$0.00	<b>Contractor</b>	
<b>Comments</b>	No Comments	<b>New Value</b>	0
<b>Assignment</b>	None		
<b>Designated Staff</b>			

**Mitla Avenue - De Palma Street To End**

**Sidewalks - Exterior : Sidewalks , Surface**

---

**East Side**

**Sidewalk South Of End @ 33.947922460893, -118.157492286**

Sidewalks , Surface : Cross Slope

**Finding**

Sidewalk cross slope is not compliant.

**On-Site Finding** 4.30 percent for 13.00 feet

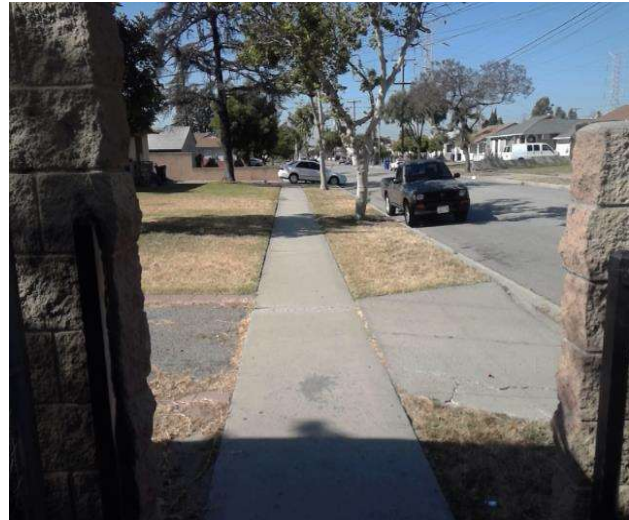
**Recommendation**

Repave the sidewalk surface with the recommended cross slope.

Recommendation Up to 2.08 percent

**Costing Info (Estimated)**

Repave surface \$1,092



**Code Reference** ADA 206, 302,CA 11B-403.3

**Progress**

---

<b>Record Number</b>	409309	<b>Resolution</b>	None
<b>Progress</b>	Not_Started	<b>Priority</b>	Seven
<b>Actual Date</b>		<b>Projected Date</b>	06/30/2032
<b>Actual Cost</b>	\$0.00	<b>Contractor</b>	
<b>Comments</b>	No Comments	<b>New Value</b>	0
<b>Assignment</b>	None		
<b>Designated Staff</b>			



**Mitla Avenue - De Palma Street To End**

**Sidewalks - Exterior : Sidewalks**

---

**East Side**

**Sidewalk South Of Luxor Street @ 33.945395919539, -118.159283995628**

Sidewalks : Width

**Finding**

Sidewalk does not have enough width.

**On-Site Finding** 45.00 inches for 69.00 feet

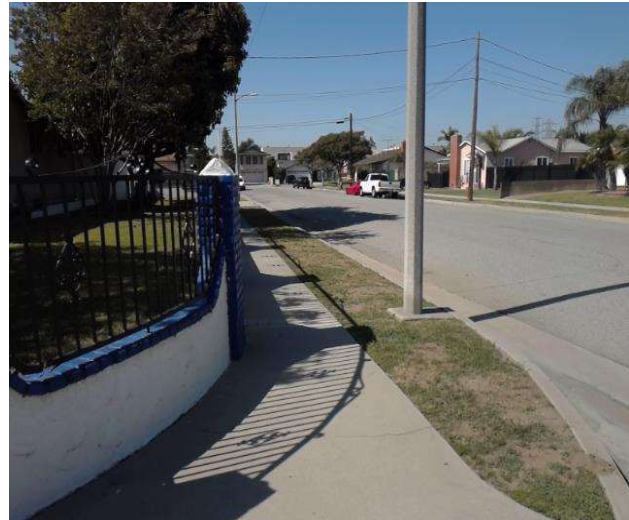
**Recommendation**

Widen the sidewalk to the recommended value.

Recommendation At least 48.00 inches

**Costing Info (Estimated)**

\$1,260



**Code Reference** ADA 206, 302,CA 11B-403.5.1

**Progress**

---

<b>Record Number</b>	409314	<b>Resolution</b>	None
<b>Progress</b>	Not_Started	<b>Priority</b>	Seven
<b>Actual Date</b>		<b>Projected Date</b>	06/30/2032
<b>Actual Cost</b>	\$0.00	<b>Contractor</b>	
<b>Comments</b>	No Comments		
<b>Assignment</b>	None	<b>New Value</b>	0
<b>Designated Staff</b>			

**Mitla Avenue - De Palma Street To End**

**Sidewalks - Exterior : Sidewalks , Surface**

---

**East Side**

**Sidewalk South Of Luxor Street @ 33.945395919539, -118.159283995628**

Sidewalks , Surface : Cross Slope

**Finding**

Sidewalk cross slope is not compliant.

**On-Site Finding** 4.60 percent for 49.00 feet

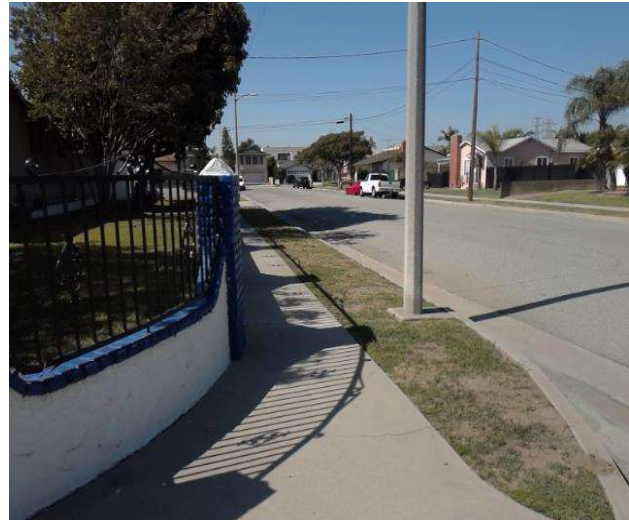
**Recommendation**

Repave the sidewalk surface with the recommended cross slope.

Recommendation Up to 2.08 percent

**Costing Info (Estimated)**

Repave surface \$1,092



**Code Reference** ADA 206, 302,CA 11B-403.3

**Progress**

---

<b>Record Number</b>	409315	<b>Resolution</b>	None
<b>Progress</b>	Not_Started	<b>Priority</b>	Seven
<b>Actual Date</b>		<b>Projected Date</b>	06/30/2032
<b>Actual Cost</b>	\$0.00	<b>Contractor</b>	
<b>Comments</b>	No Comments		
<b>Assignment</b>	None	<b>New Value</b>	0
<b>Designated Staff</b>			

**Mitla Avenue - De Palma Street To End**

**Sidewalks - Exterior : Sidewalks**

**East Side @ 33.947922460893, -118.157492286**

Sidewalks : 60X60 Turn Area

**Finding**

There is no 60X60 turn area at every 200 feet.

**On-Site Finding** Not Found

**Recommendation**

Provide a 60X60 turn every 200 feet on the sidewalk.

Recommendation See Recommendation

**Costing Info (Estimated)**

\$2,400



**Code Reference** ADA 206, 302

**Progress**

<b>Record Number</b>	409308	<b>Resolution</b>	None
<b>Progress</b>	Not_Started	<b>Priority</b>	Seven
<b>Actual Date</b>		<b>Projected Date</b>	06/30/2032
<b>Actual Cost</b>	\$0.00	<b>Contractor</b>	
<b>Comments</b>	No Comments	<b>New Value</b>	0
<b>Assignment</b>	None		
<b>Designated Staff</b>			

**Mitla Avenue - De Palma Street To End**

**Sidewalks - Exterior : Sidewalks**

---

**West Side**

**De Palma Street West Crossing @ 33.945560575334, -118.159383237362**

Sidewalks : Vehicular Traffic Slope

**Finding**

Slope at vehicular traffic is not compliant.

**On-Site Finding** 5.50 percent

**Recommendation**

Repave the surface to provide a compliant slope.

Recommendation Up to 5.00 percent

**Costing Info (Estimated)**

Repave surface \$1,092



**Code Reference**

**Progress**

---

<b>Record Number</b>	409307	<b>Resolution</b>	None
<b>Progress</b>	Not_Started	<b>Priority</b>	Seven
<b>Actual Date</b>		<b>Projected Date</b>	06/30/2032
<b>Actual Cost</b>	\$0.00	<b>Contractor</b>	
<b>Comments</b>	No Comments	<b>New Value</b>	0
<b>Assignment</b>	None		
<b>Designated Staff</b>			

**Mitla Avenue - De Palma Street To End**

**Sidewalks - Exterior : Sidewalks , Surface**

---

**West Side**

**Sidewalk North Of De Palma Street @ 33.945106658589, -118.159710466862**

Sidewalks , Surface : Cross Slope

**Finding**

Sidewalk cross slope is not compliant.

**On-Site Finding** 8.30 percent for 168.00 feet

**Recommendation**

Repave the sidewalk surface with the recommended cross slope.

Recommendation Up to 2.08 percent

**Costing Info (Estimated)**

Repave surface \$1,092



**Code Reference** ADA 206, 302, CA 11B-403.3

**Progress**

---

<b>Record Number</b>	409296	<b>Resolution</b>	None
<b>Progress</b>	Not_Started	<b>Priority</b>	Seven
<b>Actual Date</b>		<b>Projected Date</b>	06/30/2032
<b>Actual Cost</b>	\$0.00	<b>Contractor</b>	
<b>Comments</b>	No Comments		
<b>Assignment</b>	None	<b>New Value</b>	0
<b>Designated Staff</b>			

**Mitla Avenue - De Palma Street To End**

**Sidewalks - Exterior : Sidewalks**

---

**West Side**

**Sidewalk North Of Luxor Street @ 33.945978888621, -118.159085512161**

Sidewalks : Missing Sidewalk

**Finding**

Section of sidewalk is missing and consists of dirt, grass or gravel.

**On-Site Finding** 88.00 feet

**Recommendation**

Provide a compliant sidewalk for the missing section.

Recommendation See Recommendation

**Costing Info (Estimated)**

\$1,260



**Code Reference** ADA 206, 302,CA 11B-302,CA 11B-206

**Progress**

---

<b>Record Number</b>	409295	<b>Resolution</b>	None
<b>Progress</b>	Not_Started	<b>Priority</b>	Seven
<b>Actual Date</b>		<b>Projected Date</b>	06/30/2037
<b>Actual Cost</b>	\$0.00	<b>Contractor</b>	
<b>Comments</b>	No Comments	<b>New Value</b>	0
<b>Assignment</b>	None		
<b>Designated Staff</b>			

**Mitla Avenue - De Palma Street To End**

**Sidewalks - Exterior : Sidewalks , Surface**

---

**West Side**

**Sidewalk North Of Luxor Street @ 33.947762259705, -118.157815486193**

Sidewalks , Surface : Cross Slope

**Finding**

Sidewalk cross slope is not compliant.

**On-Site Finding** 4.30 percent for 100.00 feet

**Recommendation**

Repave the sidewalk surface with the recommended cross slope.

Recommendation Up to 2.08 percent

**Costing Info (Estimated)**

Repave surface \$1,092



**Code Reference** ADA 206, 302, CA 11B-403.3

**Progress**

---

<b>Record Number</b>	409297	<b>Resolution</b>	None
<b>Progress</b>	Not_Started	<b>Priority</b>	Seven
<b>Actual Date</b>		<b>Projected Date</b>	06/30/2032
<b>Actual Cost</b>	\$0.00	<b>Contractor</b>	
<b>Comments</b>	No Comments		
<b>Assignment</b>	None	<b>New Value</b>	0
<b>Designated Staff</b>			

**Mitla Avenue - De Palma Street To End**

**Sidewalks - Exterior : Sidewalks**

**West Side @ 33.944855223273, -118.159888833761**

Sidewalks : 60X60 Turn Area

**Finding**

There is no 60X60 turn area at every 200 feet.

**On-Site Finding** Not Found

**Recommendation**

Provide a 60X60 turn every 200 feet on the sidewalk.

Recommendation See Recommendation

**Costing Info (Estimated)**

\$2,400



**Code Reference** ADA 206, 302

**Progress**

<b>Record Number</b>	409294	<b>Resolution</b>	None
<b>Progress</b>	Not_Started	<b>Priority</b>	Seven
<b>Actual Date</b>		<b>Projected Date</b>	06/30/2032
<b>Actual Cost</b>	\$0.00	<b>Contractor</b>	
<b>Comments</b>	No Comments		
<b>Assignment</b>	None	<b>New Value</b>	0
<b>Designated Staff</b>			



**Mitla Avenue - De Palma Street To End**



**Mitla Avenue - De Palma Street To End**

De Palma Street To End  
Downey, CA 90242

Date of Inspection  
4/21/2017

\*Estimated Facility Total: \$36,542

\*Estimated facility total is for estimating purposes only and does not represent total construction, repair totals or design fees.

Prepared By

**Disability Access Consultants**

(800) 743-7067

Prepared Using



# Accessibility Survey

---



## City of Downey Mitla Avenue - Nada Street To Cole Street

Nada Street To Cole Street  
Downey, CA 90242

Date of Inspection  
5/3/2017

Prepared By  
**Disability Access Consultants**  
(800) 743-7067

**Mitla Avenue - Nada Street To Cole Street**

**Sidewalks - Exterior : Sidewalks**

**East Side @ 33.942577808500, -118.161642998457**

Sidewalks : 60X60 Turn Area

**Finding**

There is no 60X60 turn area at every 200 feet.

**On-Site Finding** Not Found

**Recommendation**

Provide a 60X60 turn every 200 feet on the sidewalk.

Recommendation See Recommendation

**Costing Info (Estimated)**

\$2,400



**Code Reference** ADA 206, 302

**Progress**

<b>Record Number</b>	419093	<b>Resolution</b>	None
<b>Progress</b>	Not_Started	<b>Priority</b>	Seven
<b>Actual Date</b>		<b>Projected Date</b>	06/30/2032
<b>Actual Cost</b>	\$0.00	<b>Contractor</b>	
<b>Comments</b>	No Comments		
<b>Assignment</b>	None	<b>New Value</b>	0
<b>Designated Staff</b>			

**Mitla Avenue - Nada Street To Cole Street**

**Sidewalks - Exterior : Sidewalks**

**West Side @ 33.943079579275, -118.161358684301**

Sidewalks : No Sidewalk

**Finding**

No sidewalk exists at the location.

**On-Site Finding** Not Found

**Recommendation**

No action necessary until a sidewalk is provided.

Recommendation See Recommendation

**Costing Info (Estimated)**

Unassigned



**Code Reference** ADA 206

**Progress**

<b>Record Number</b>	419092	<b>Resolution</b>	None
<b>Progress</b>	Not_Started	<b>Priority</b>	Seven
<b>Actual Date</b>		<b>Projected Date</b>	06/30/2037
<b>Actual Cost</b>	\$0.00	<b>Contractor</b>	
<b>Comments</b>	No Comments		
<b>Assignment</b>	None	<b>New Value</b>	0
<b>Designated Staff</b>			

**Mitla Avenue - Nada Street To Cole Street**



**Mitla Avenue - Nada Street To Cole Street**

**Nada Street To Cole Street  
Downey, CA 90242**

Date of Inspection  
5/3/2017

**\*Estimated Facility Total: \$2,400**

\*Estimated facility total is for estimating purposes only and does not represent total construction, repair totals or design fees.

Prepared By

**Disability Access Consultants**

**(800) 743-7067**

Prepared Using

