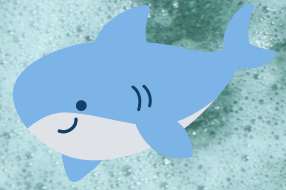


One Day Camp
Oct 14

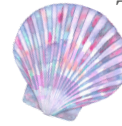
Welcome to...



SENIOR CAMP DIRECTOR: MS. MEL
CAMP STAFF: MS. ATHENA & MS. FRANKEE

Our staff at Camp Downey hope to provide a great experience with lasting memories for your child.

Thank you for choosing
Camp Downey!



Camp Downey will be leaving promptly at **9:30AM** to head over to the **Polliwog Park in Manhattan Beach**. Campers who arrive later than our bus departure time will need to arrange their own transportation to the location. Camp leaders cannot wait behind for those who do not arrive on time to camp.

We will be at Polliwog Park to have lunch and after lunch we will travel the **Roundhouse Aquarium**. At the aquarium, campers will have a private tour and lesson about marine life! **Please send your child with a sack lunch.**

Campers are required to wear their orange Camp Downey shirt. Your child is responsible for holding their own belongings (sweaters, water bottles, etc).

We will return to Furman Park by **4:00PM**, traffic permitting.

CAMP REMINDERS:

- Please send your child with a sack lunch.
- Campers are required to wear their Camp Downey t-shirt.
- Regular camp hours are from 9:00AM - 4:00PM
- Optional extended care hours are from 7AM - 9AM and 4PM - 6PM and is available for \$5.

If you need to get in contact with onsite Camp staff, please call the site phone number at **(562) 419-1569**.

If you need further assistance, please contact BJR Center at **(562) 904-7223**.